

FRUEHAUF



A1239-200

"PLATED" TANKER Semi-Trailer



TRUCK TRACTOR NOT INCLUDED

SUPER-DETAILED 1/25 SCALE

READ THIS BEFORE YOU BEGIN

Look over this instruction sheet carefully before you begin building. Follow the assembly instructions and "test-fit" the parts without cementing. This will familiarize you with the location of the parts.

For the best results, the various sub-assemblies and components should be painted before any "chrome" parts are attached. For example: When attaching "non-chrome" body accessories, it is best to cement them in place and paint the body as a unit.

AMT® kits are molded from the finest High-Impact Styrene

plastic. Use only paint and cement made for Styrene. Trim excess plastic from parts before joining. When attaching "chrome" parts, scrape plating away where parts are to be joined. Use just enough cement to join parts, and be careful not to smear cement on exposed surfaces.

Built according to the instructions on this sheet, you should have no trouble assembling your kit.

BUILDING TIPS FOR THE ADVANCED MODELER

For the best possible finish, your kit should be painted, even if molded in color. Paint should be applied evenly, in several thin coats rather than one heavy coat. The first coat should not completely cover the surface. Each layer should be allowed to thoroughly dry before the next is applied. Also, each coat should be "wet sanded", except for the final coat, using No. 1200 wet or dry sandpaper which is slightly damp. Be careful not to remove any detail while sanding.

It is important to keep your hands clean when working with your model. Wash parts thoroughly before painting to remove any mold release agent that may have been used during manufacture, body oil from your hands, sanding residue, and dust, which is naturally attracted to plastic by static electricity. Use a mild solution of dishwashing detergent and water. A tack rag should be used to dry the parts, DO NOT use paper towels or tissues, since they will leave lint on the part.

Parting lines and glue joints should be sanded or filed prior to painting and cementing. Because paint has a tendency to draw away from sharp edges, they should be lightly filed. Use filler putty designed for plastic to fill small gaps that may occur between parts and to blend contours. This should be done only after the first, or "primer," coat of paint is applied.

When painting a two-tone body, the lightest color should be painted first. Use frosted, or "magic," tape to mask off the area you do not want painted. After the second color is dry to the touch, the tape can be removed. Use a very fine brush to touch up edges if necessary. If decals are to be added, do so before adding any gloss coat. A gloss coat will help even out the edges between the two colors as well as set the decals.

- | | | | |
|-----------------------------|----------------------------------|-----------------------|---------------------|
| 1 Assembly sequence | B Painted this color | 15 Apply decal | ↔ Other side |
| 52 Part number | (2X) Repeat several times | P Plated | ↔ Both sides |
| 2 Completed assembly | ⊘ Do not cement | ↻ Optional | |

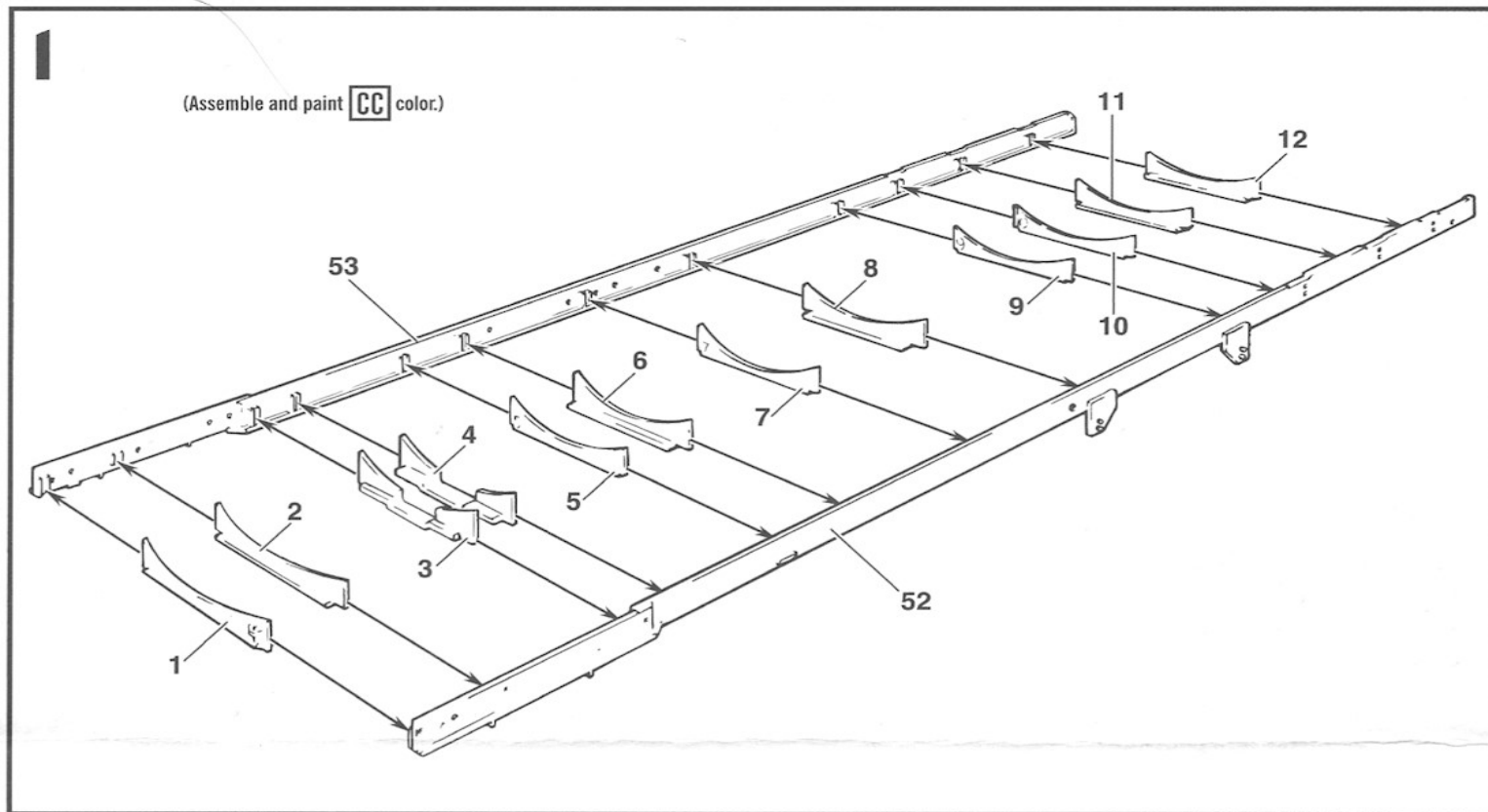
PAINT COLORS

A Black	I Steel	Q Yellow	Y Dark Green
B Flat Black	J Brass	R Tan	Z Gray
C Semi-Gloss Black	K Gold	S Brown	CC Chassis Color
D White	L Amber	T Lt. Blue	IC Interior Color
E Flat White	M Transparent Amber	U Med. Blue	BC Body Color
F Silver	N Red	V Dark Blue	▲ Semi-Gloss
G Chrome (Bright Silver)	O Transparent Red	W Transparent Blue	△ Gloss
H Aluminum	P Orange	X Lt. Green	▲ Metallic

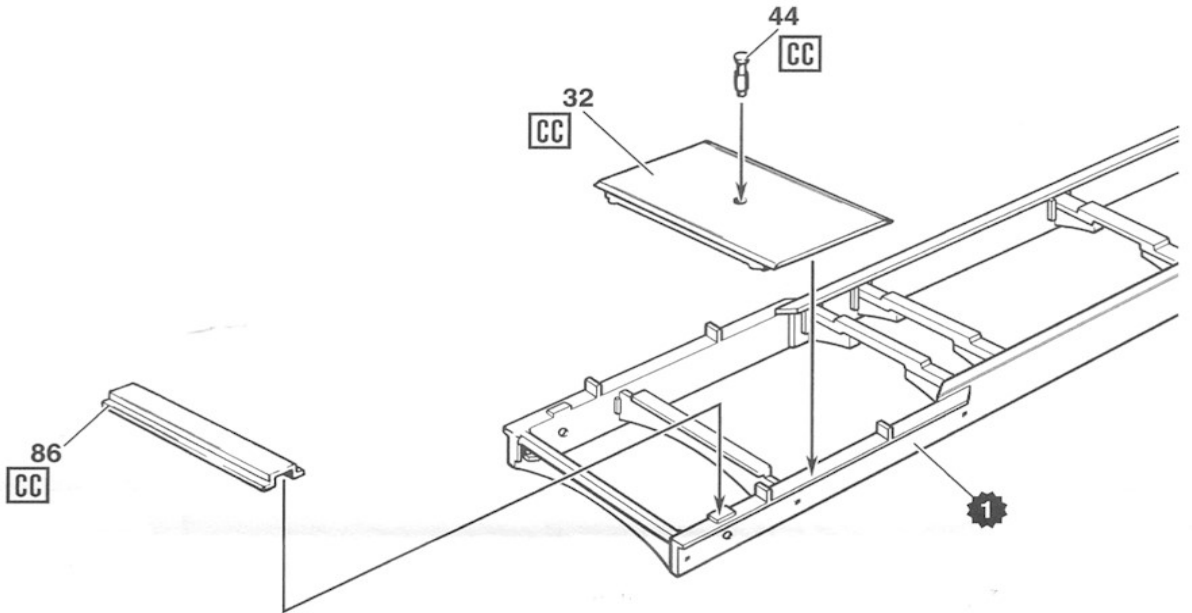
Color combinations are endless. Standard was one color on cab and one on chassis. It is recommended that you search the internet for additional color references and details.



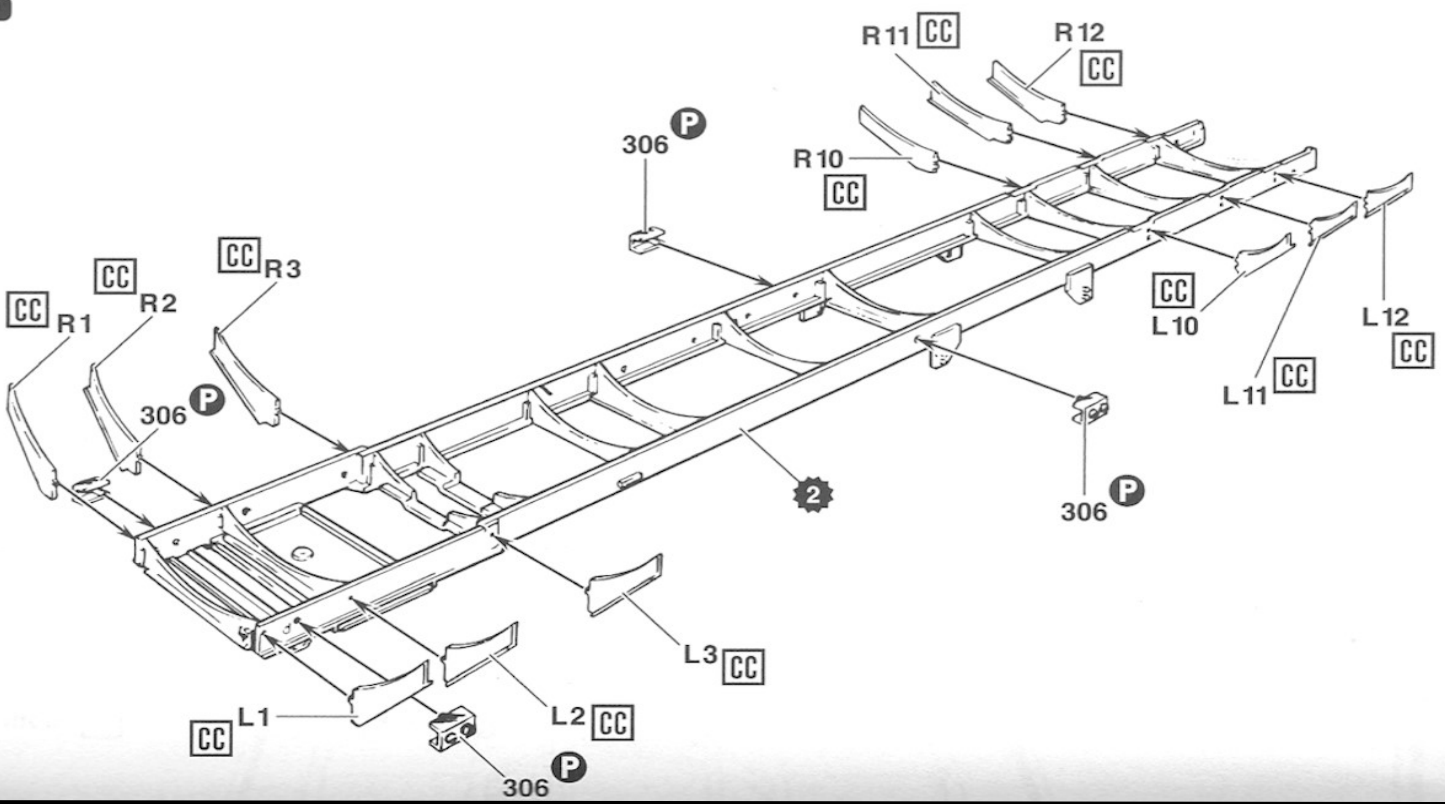
SUNOCO®, Diamond & Arrow Logo®, and associated marks, logos, designs, and trade dress are trademarks and copyrights of Sunmarks, LLC. © 2021 Sunmarks, LLC. All Rights Reserved. Goodyear (and winged foot design) and Blimp are trademarks of The Goodyear Tire & Rubber Company used under license by Round 2, LLC, South Bend, IN 46628. Copyright 2021 The Goodyear Tire & Rubber Company. AMT and design is a registered trademark of Round 2, LLC. ©2021 Round 2, LLC, South Bend, IN 46628 USA. Product and packaging designed in the USA. Made in China. All rights reserved.

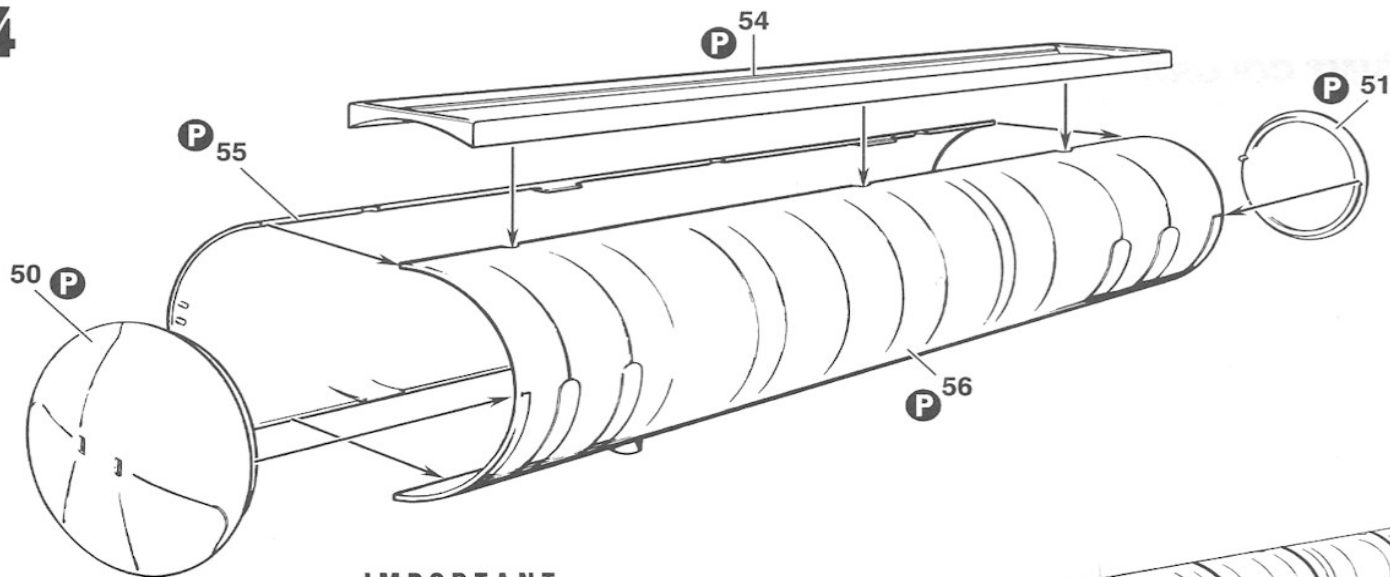


2

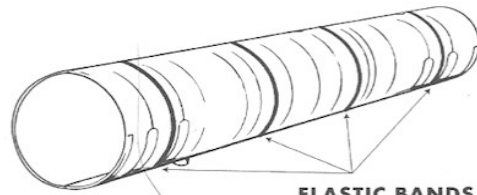
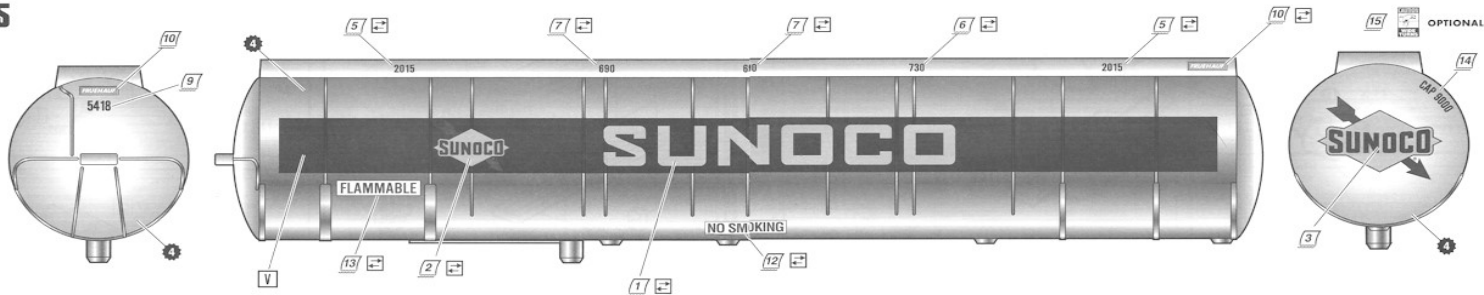
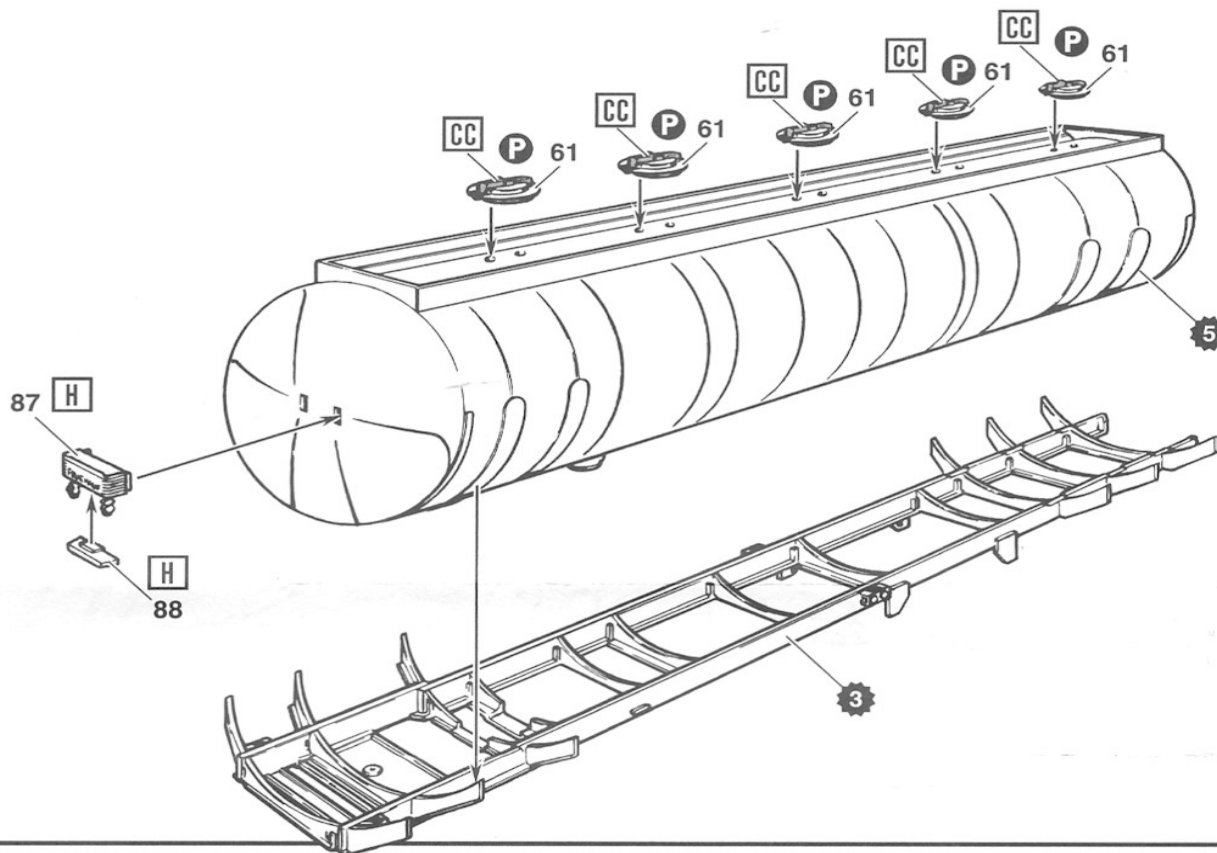


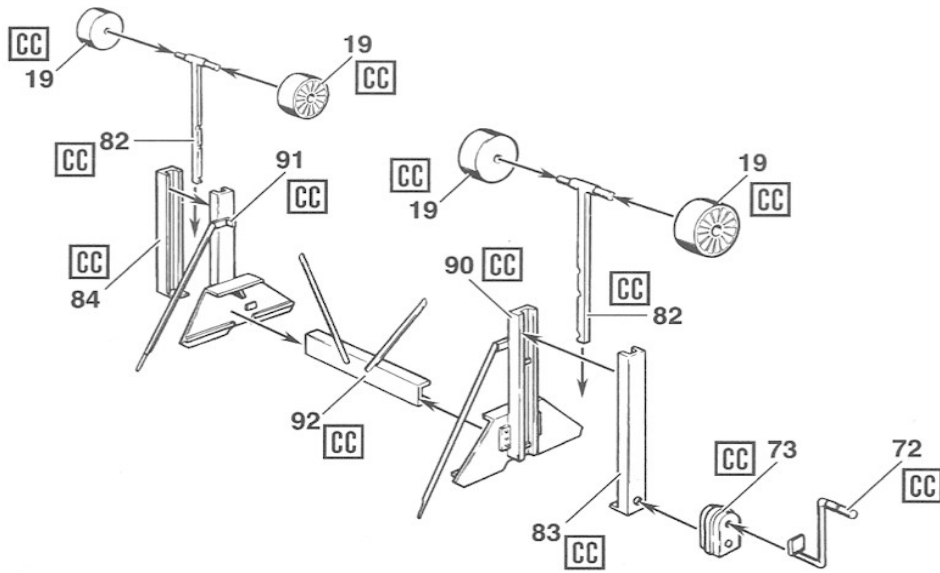
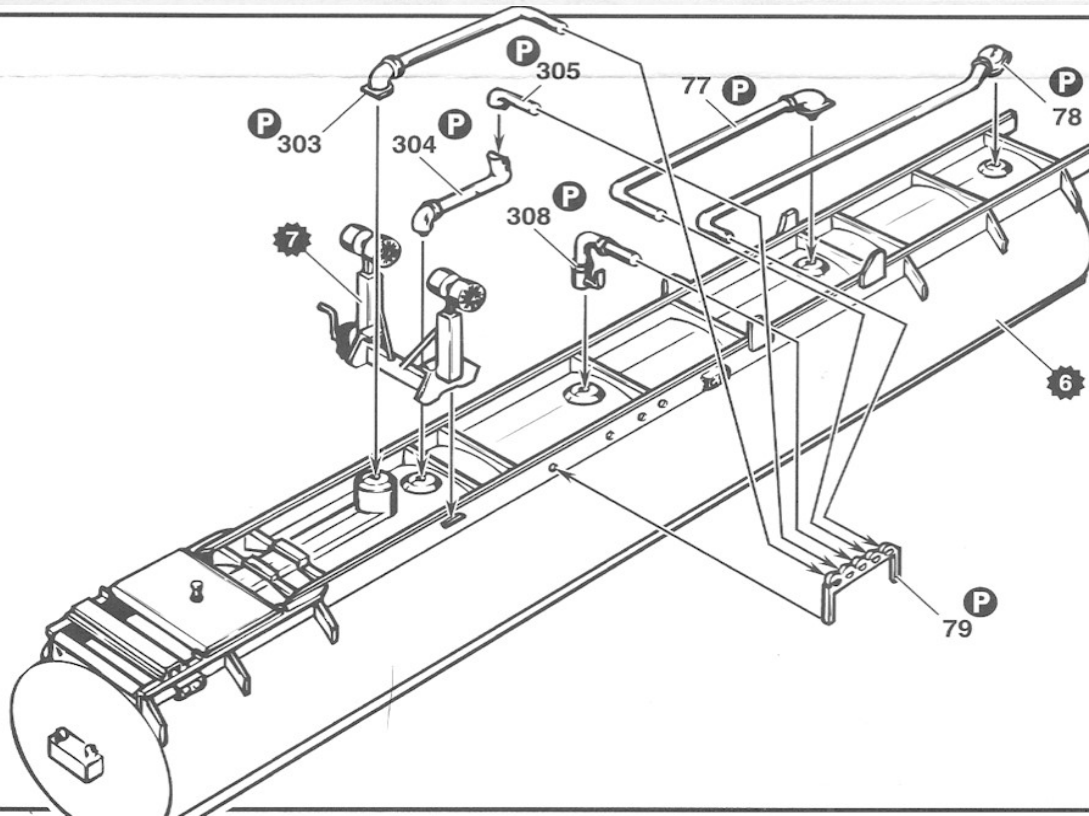
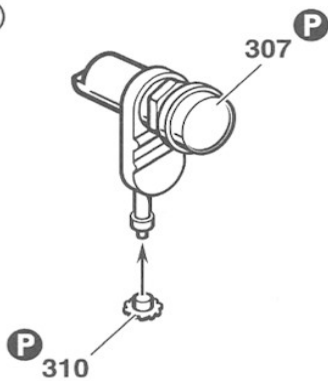
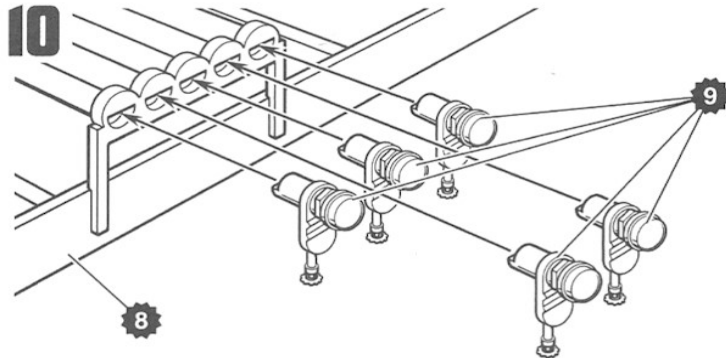
3

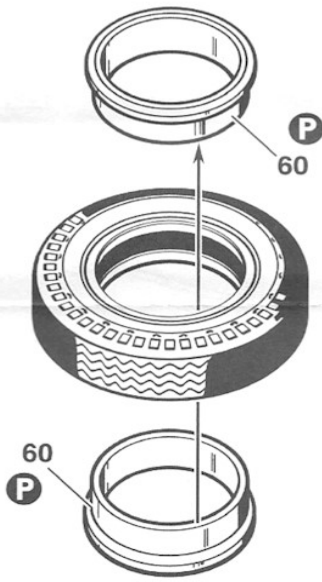
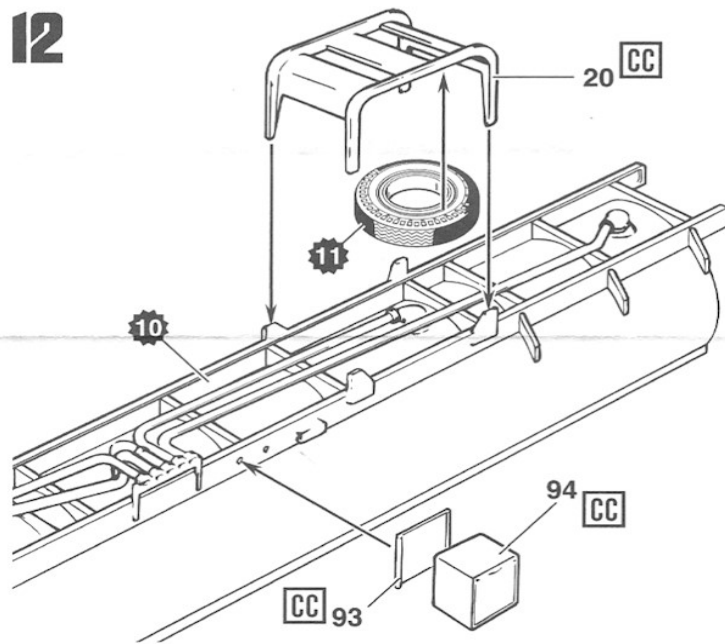
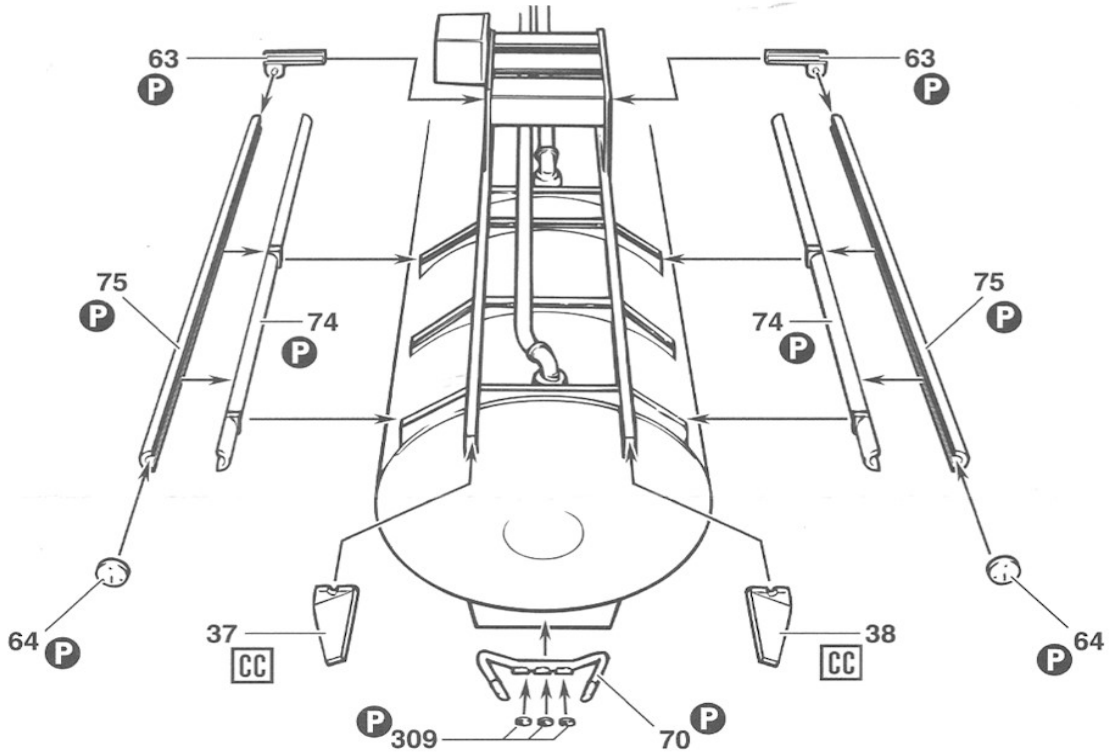
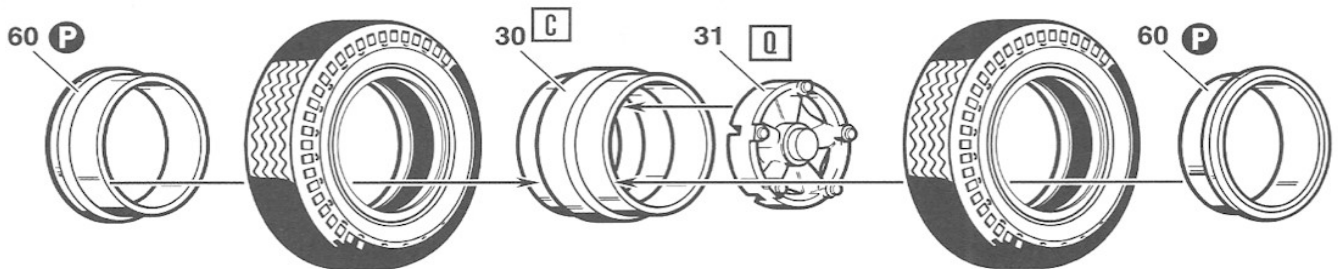


4**IMPORTANT**

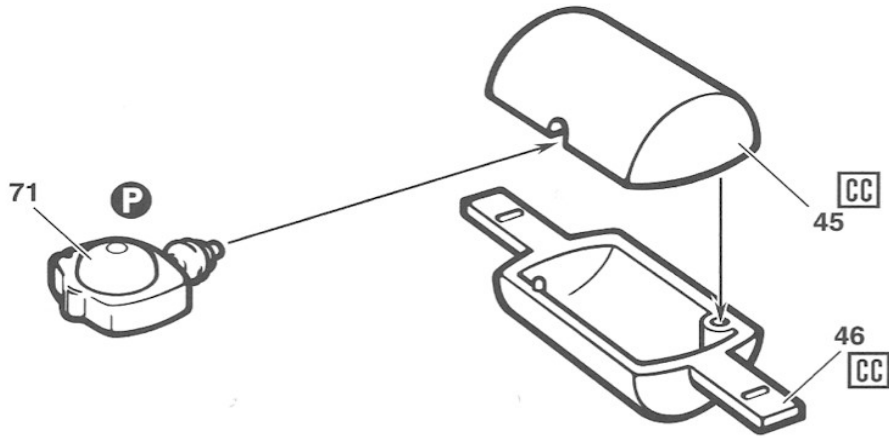
Use the 4 elastic bands included in kit to aid in holding the tank halves together during assembly. **Cement will not stick to chrome plating.** Remove all chrome plating from the mating edge surfaces of the two tank halves, before cementing together. Otherwise, they will not stay adhered to each other. When cement is fully dried, CAREFULLY remove elastic bands and continue with assembly.

**ELASTIC BANDS****5****6**

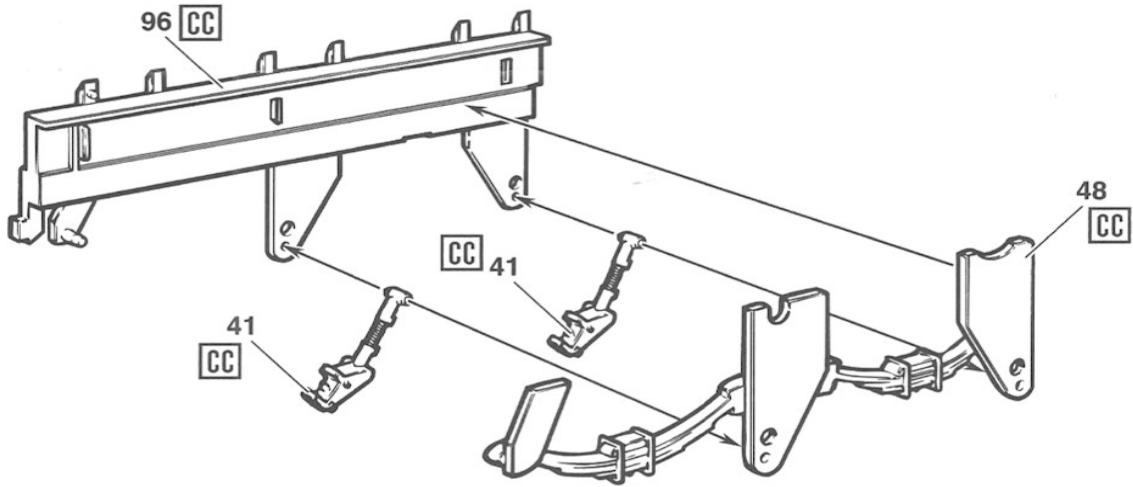
7**8****9****(5X)****10**

11**12****13****14** (4X)

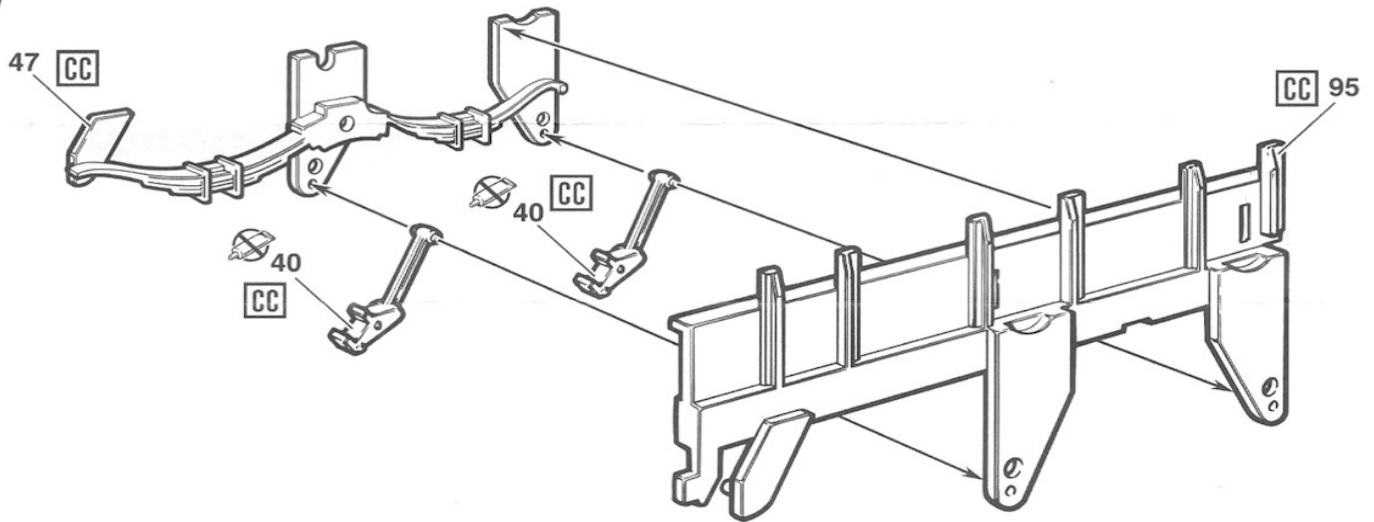
15



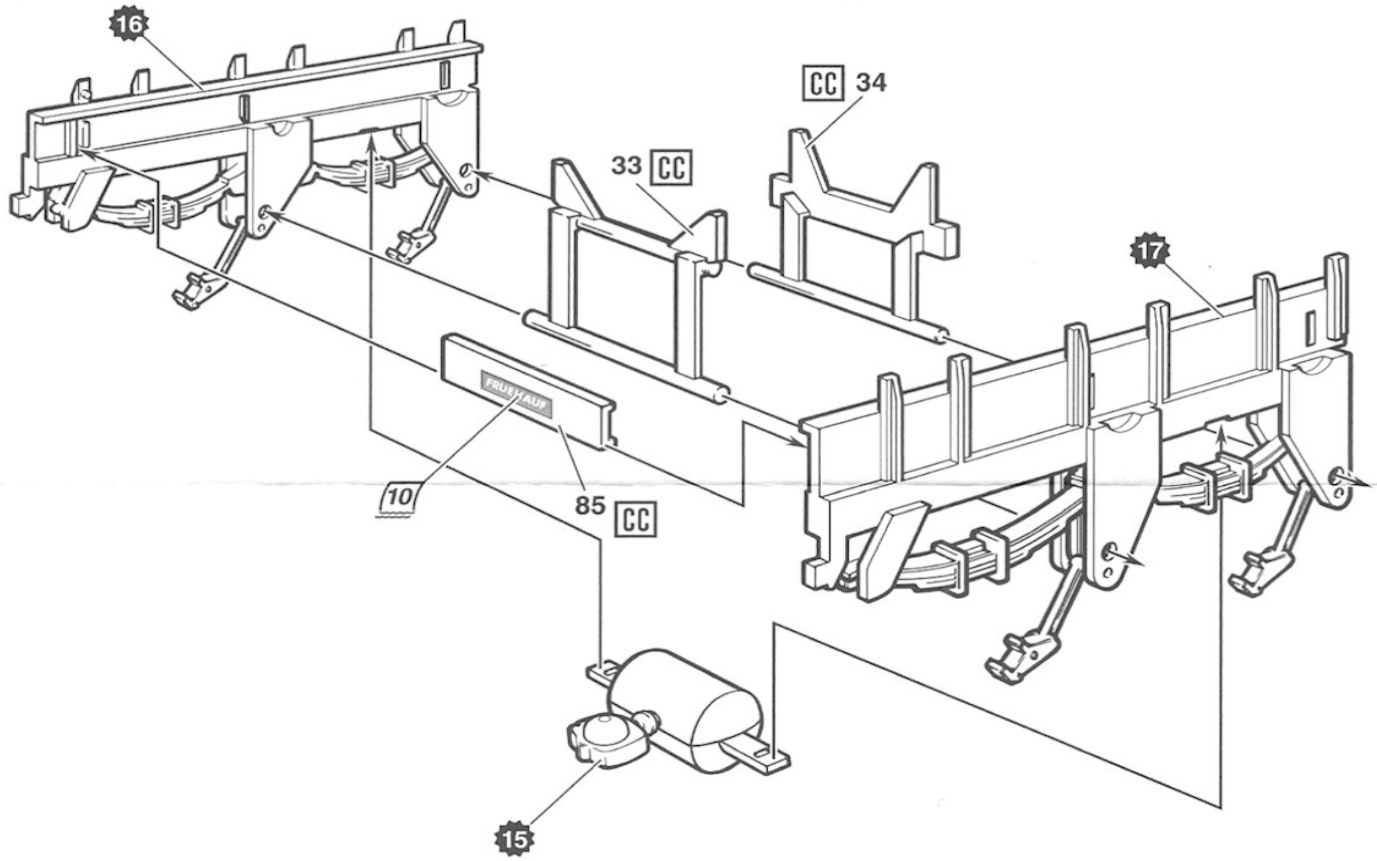
16



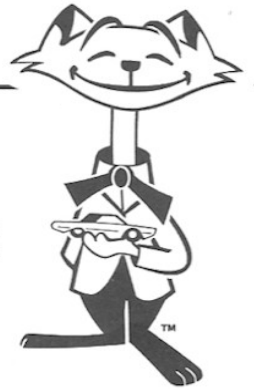
17



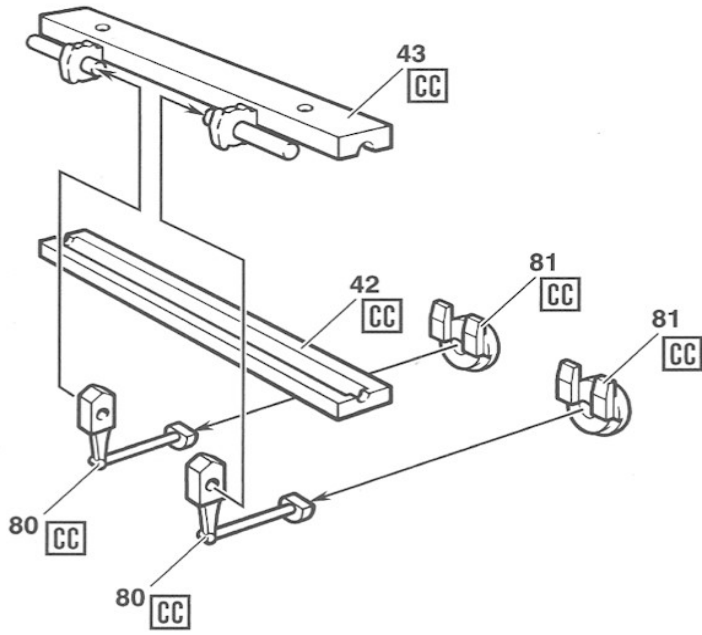
18



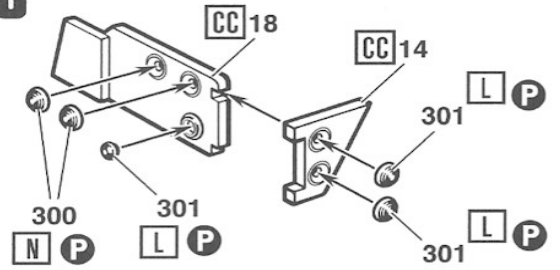
SEE MORE GREAT AMT® TRACTOR AND TRAILER KITS!
VISIT US ONLINE AT... round2models.com



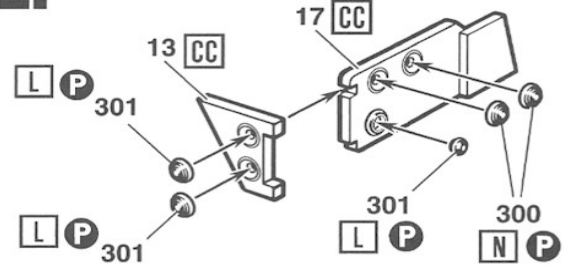
19 (2X)



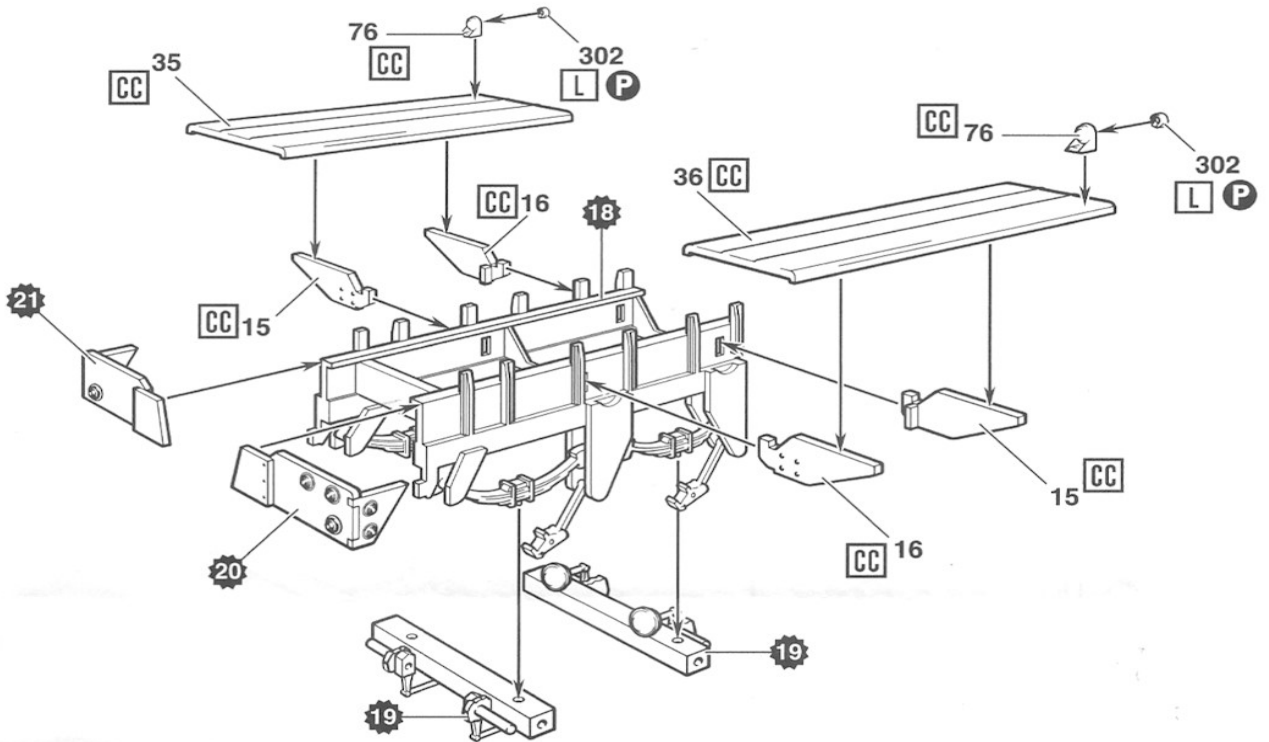
20



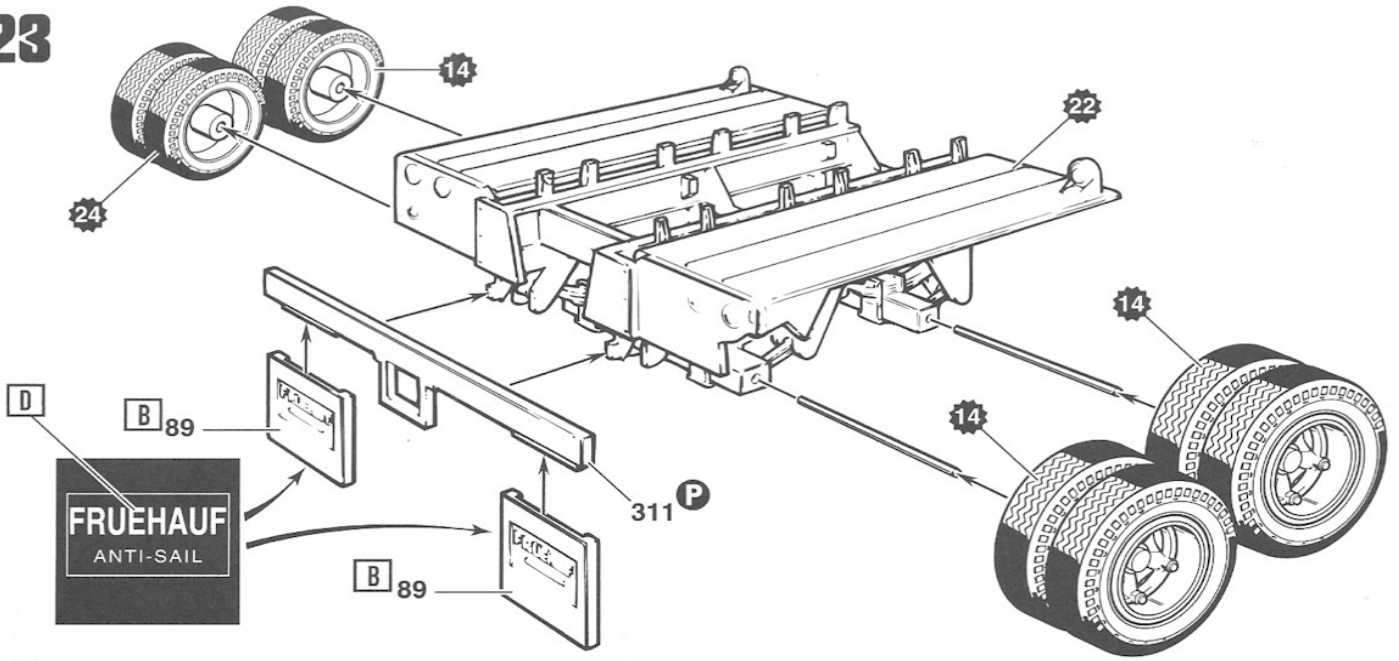
21



22



23



24

