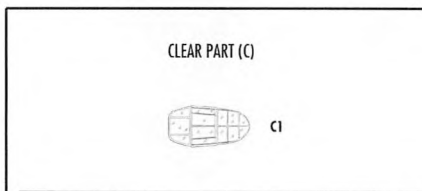
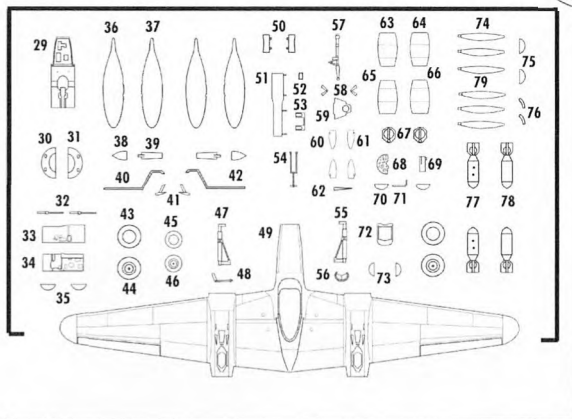
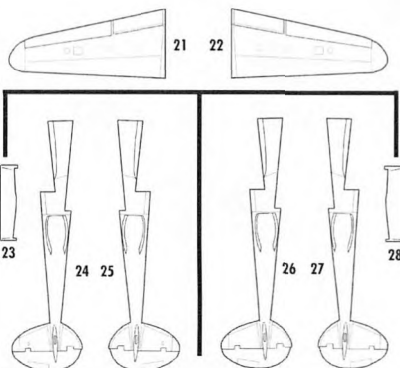
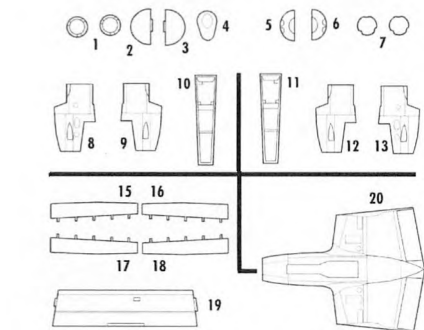




P-38 H LIGHTNING

1/72
SCALE

The P-38 was originally conceived as an advanced, high-performance twin-engine interceptor. The first major production version was the P-38E, which had a 20mm cannon rather than the earlier 37mm cannon. Production of the E began in September 1941 and 210 were built. The next version, the P-38F, introduced pylon racks that could carry either bombs or droppable fuel tanks, greatly extending its range. Production of the G began in August 1942, followed by the P-38H in May 1943, which had a more powerful version of the Allison V-1710 engine.



CLEAR PART (C)

C1

COLORS

a Černá Black	h Červená Red
b Interiér, žlutá Zinc Chromate	i Bílá White
c Stříbrná Silver	j Žlutá Yellow
d Plátno Linen	k Pneumatiky Tyres Black
e Kůže Leather	l Rezavá Rust
f Hliníková Aluminium	m Tmavá šedá Dark Grey
g Chromová Chrome	n Kovaná Gun metal

LEGEND



ohnout
bend



vteřinové lepidlo
cyanoacrylate glue



odstranit
remove



upravit
reduce



vrtat
open hole



vyrýt
scratch build



obtisk
decal

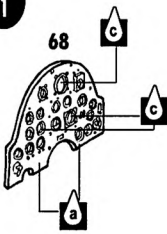


barva
color

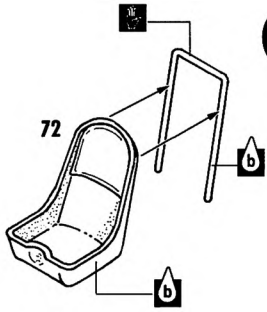


film

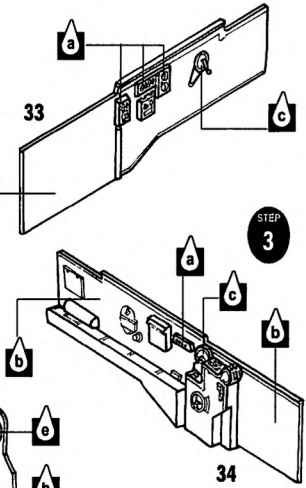
STEP 1



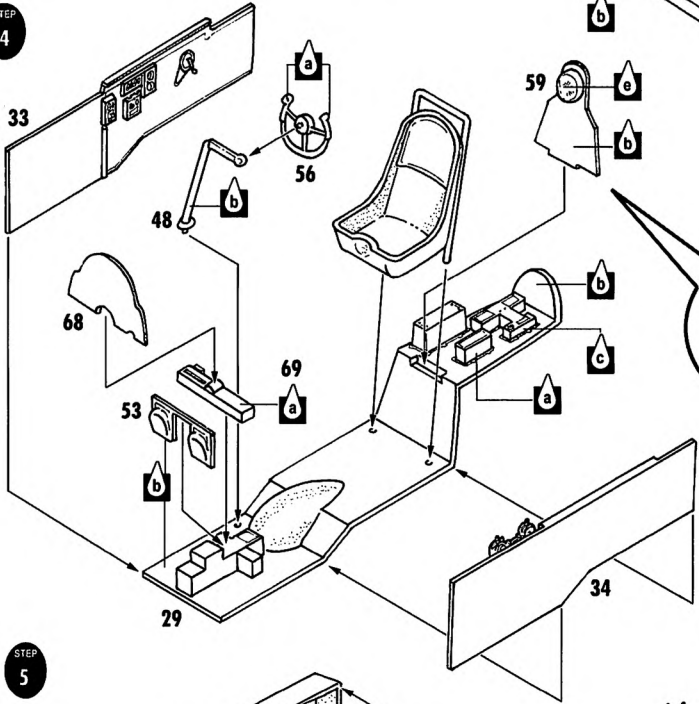
STEP 2



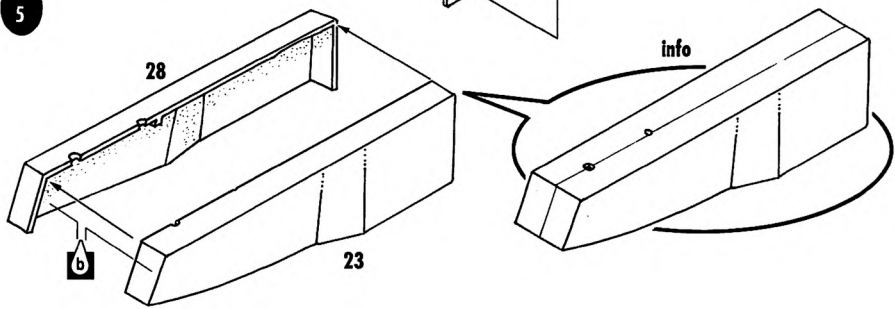
STEP 3



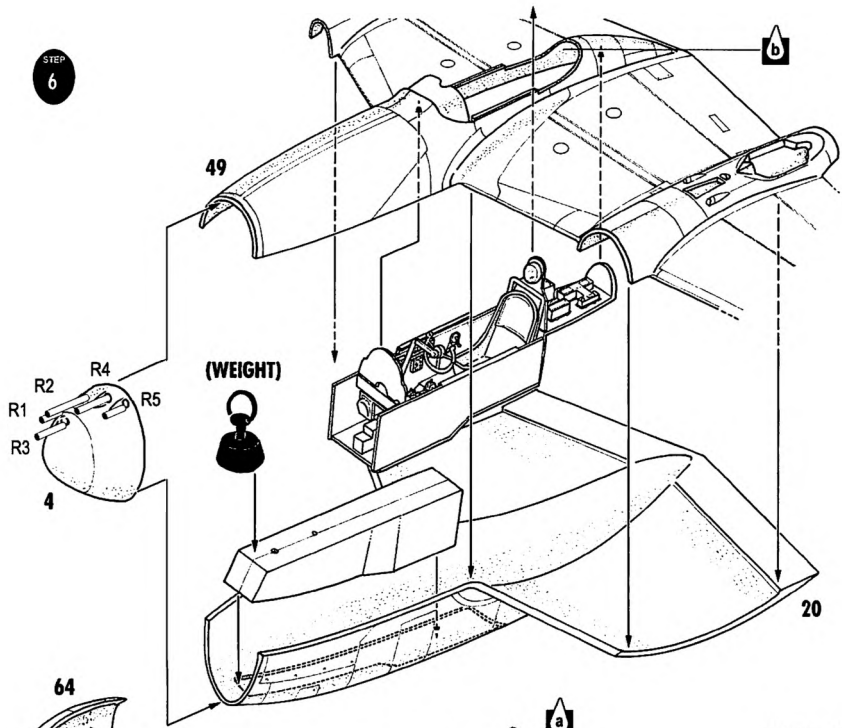
STEP 4



STEP 5

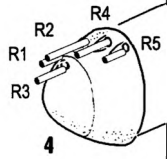


STEP
6



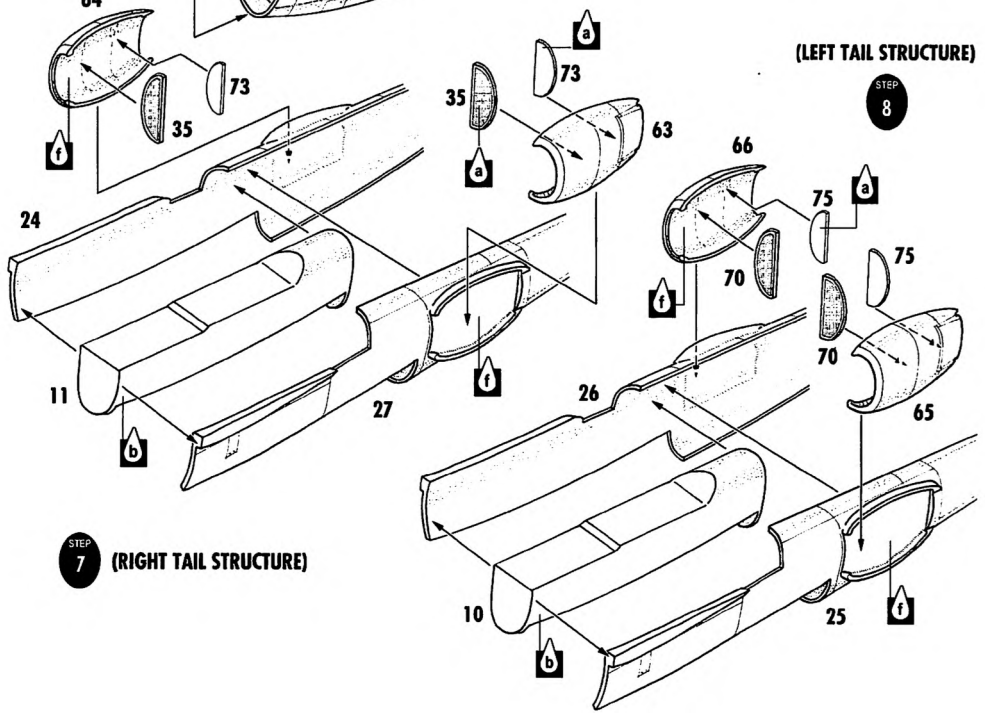
64

(WEIGHT)



(LEFT TAIL STRUCTURE)

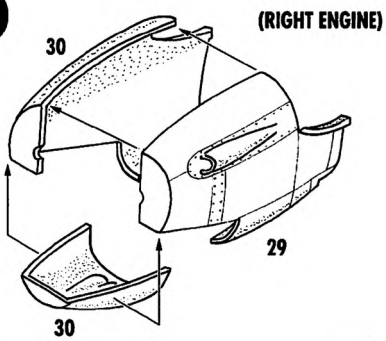
STEP
8



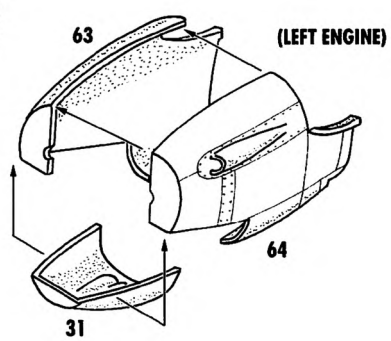
STEP
7

(RIGHT TAIL STRUCTURE)

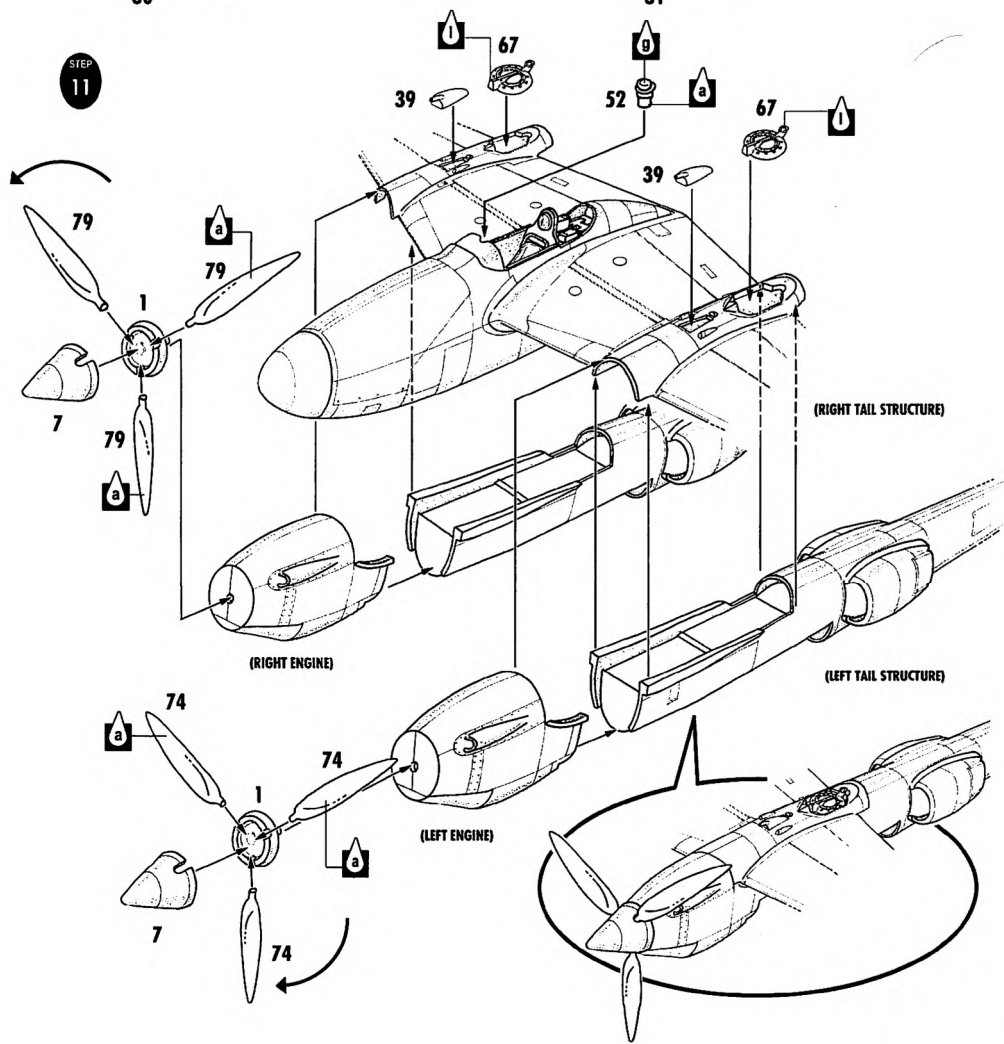
STEP 9

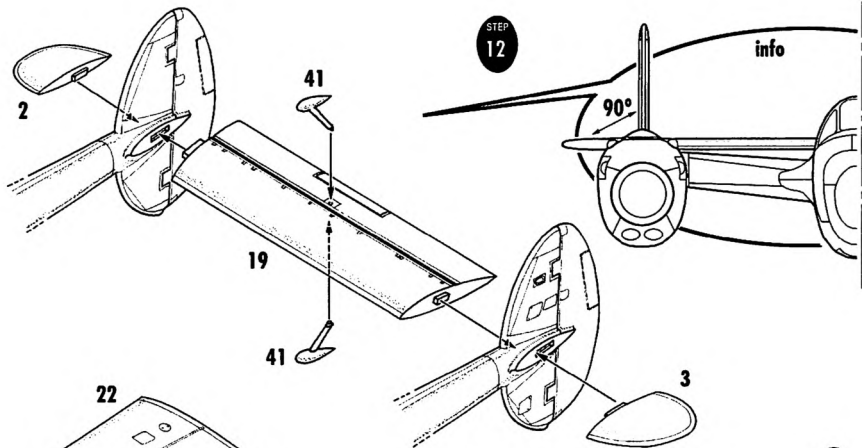


STEP 10

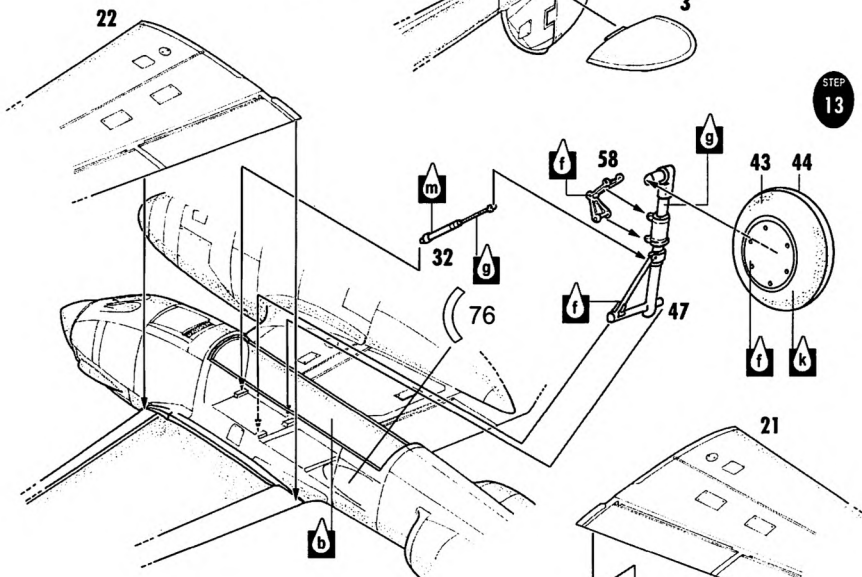


STEP 11



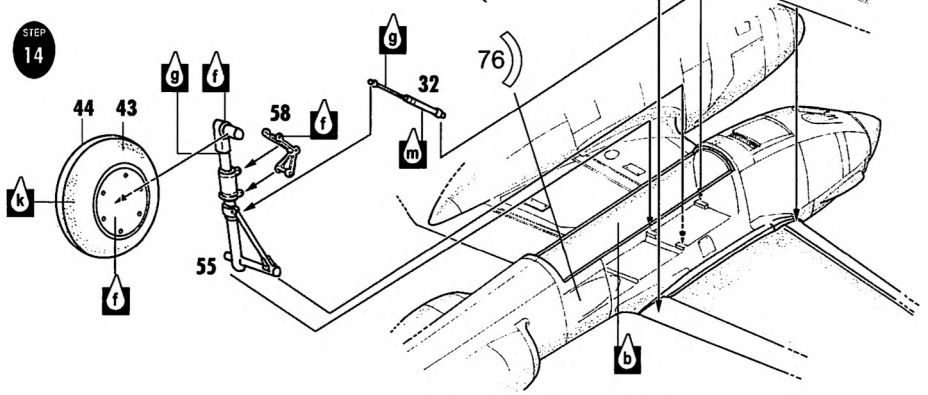


STEP 12

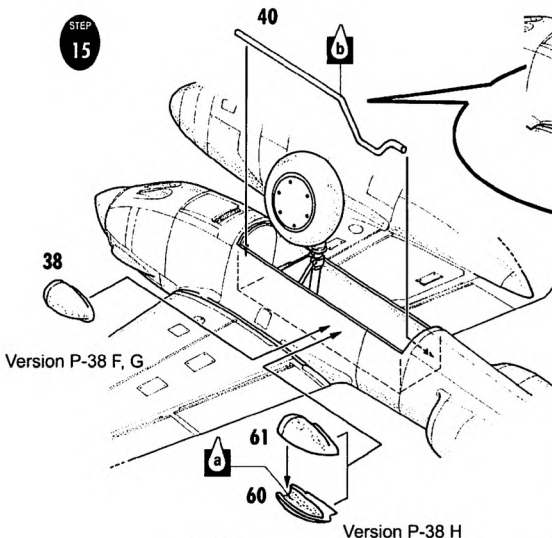


STEP 13

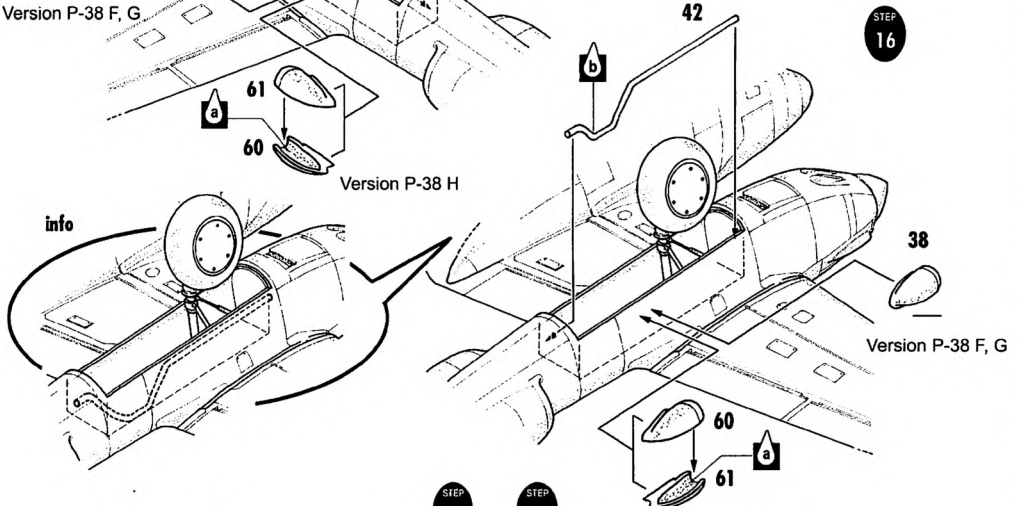
STEP 14



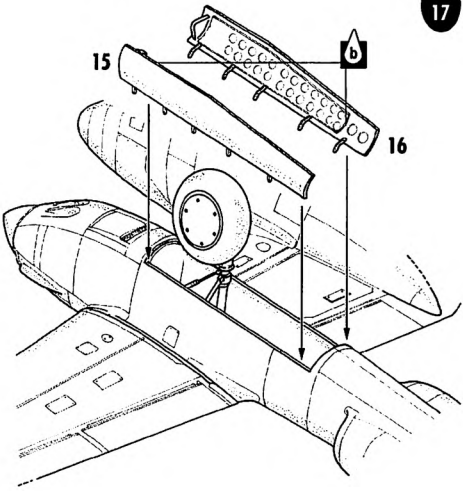
STEP 15



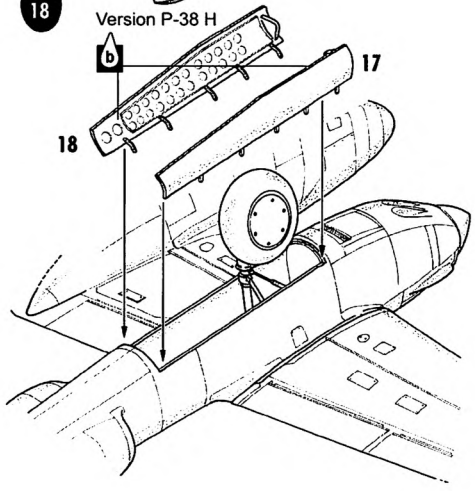
STEP 16



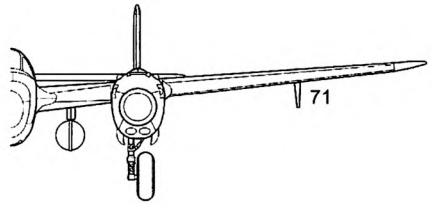
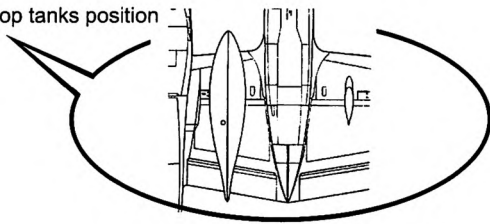
STEP 17



STEP 18

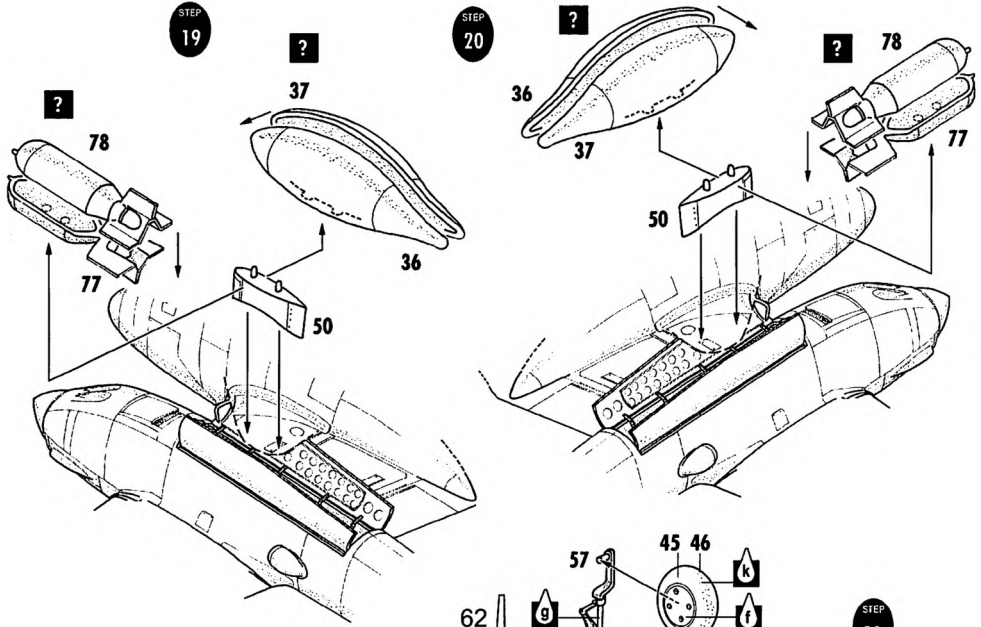


Drop tanks position



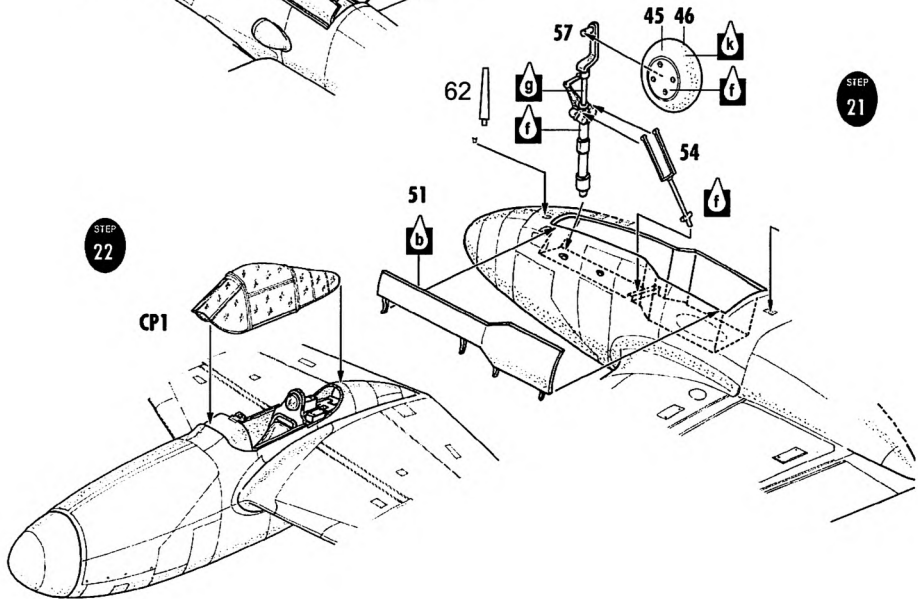
STEP 19

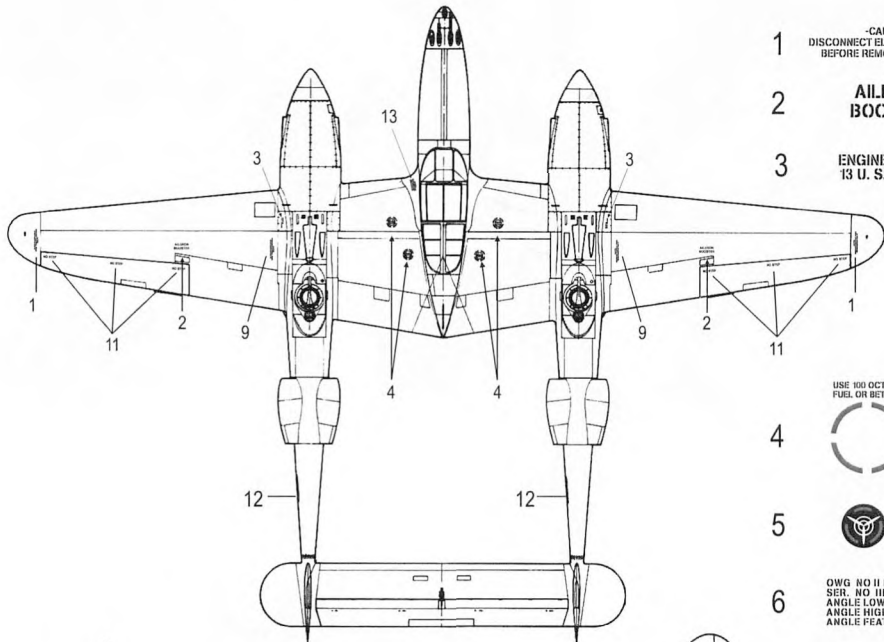
STEP 20



STEP 21

STEP 22





1 -CAUTION-
DISCONNECT ELECTRICAL WIRING
BEFORE REMOVING WING TIP

2 **AILERON
BOOSTER**

3 **ENGINE OIL
13 U. S. GALLONS**

USE 100 OCTANE
FUEL OR BETTER

4

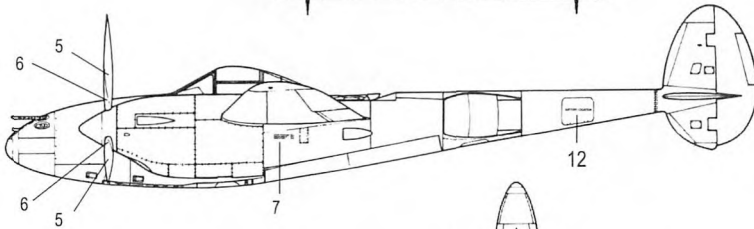


5



6

OWG NO II III IIIII
SER. NO IIII II IIIII
ANGLE LOW 23.0
ANGLE HIGH 57.7
ANGLE PEATHER 87.5



7

FURTHEST FORWARD LOAD 146.10
GROSS WT. WHEELS DOWN 151.88
GROSS WT. WHEELS UP 154.71
FURTHER AFT LOAD 56.10

8

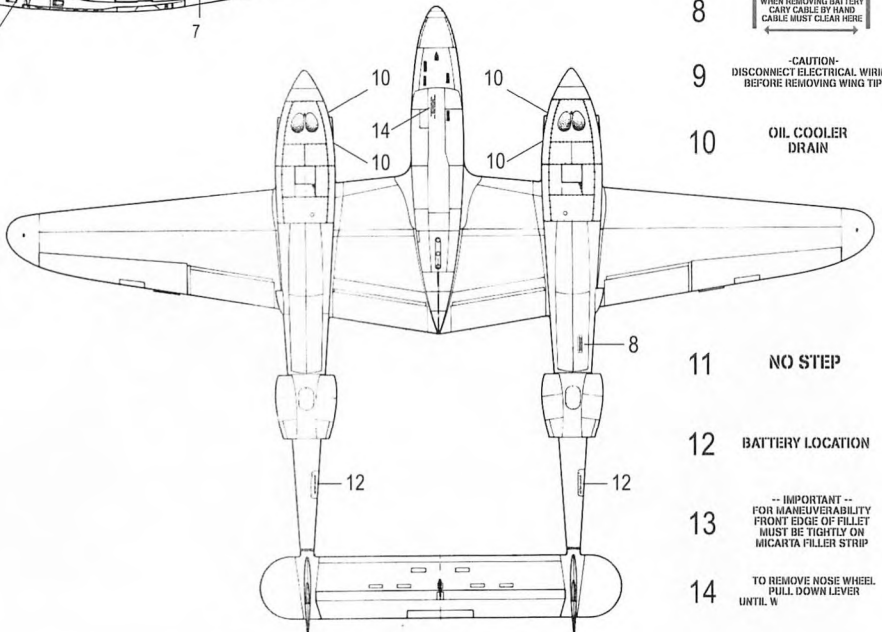
WHEN REMOVING BATTERY
CARRY CABLE BY HAND
CABLE MUST CLEAR HERE

9

-CAUTION-
DISCONNECT ELECTRICAL WIRING
BEFORE REMOVING WING TIP

10

**OIL COOLER
DRAIN**



11

NO STEP

12

BATTERY LOCATION

13

-- IMPORTANT --
FOR MANEUVERABILITY
FRONT EDGE OF FILLET
MUST BE TIGHTLY ON
MICA/TA FILLER STRIP

14

TO REMOVE NOSE WHEEL
PULL DOWN LEVER
UNTIL W