

**eduard**

# Wine, Women & Song

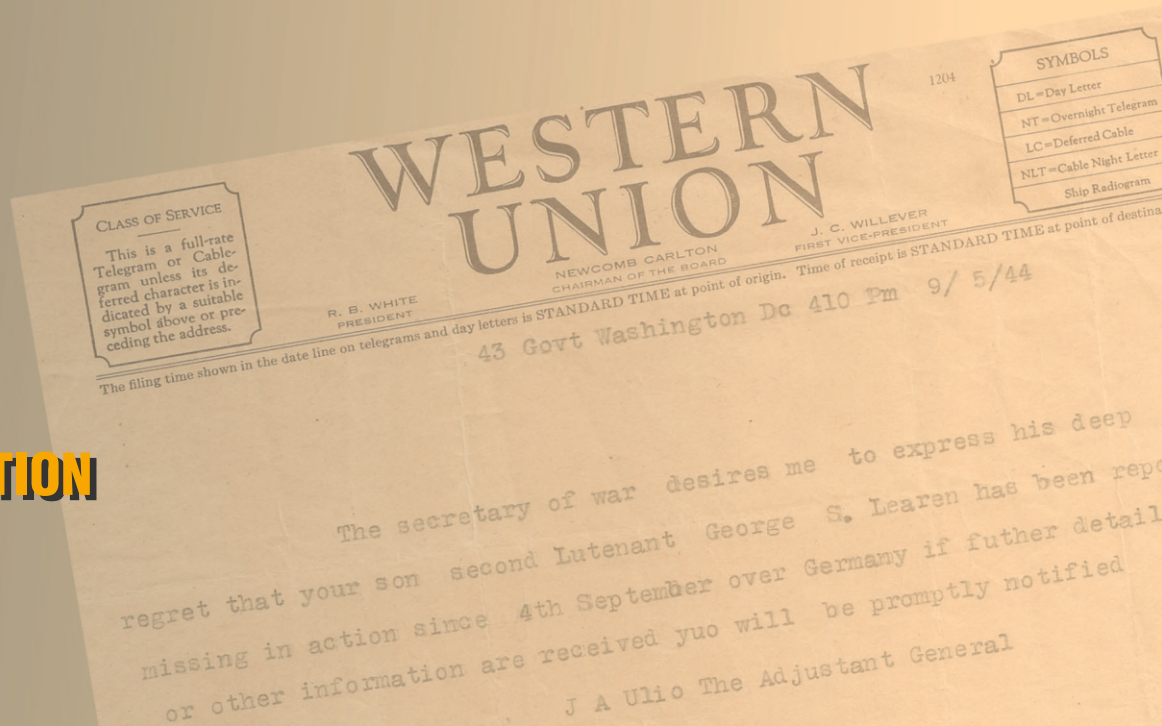


## INSTRUCTION SHEET

**1/72**

**LIMITED EDITION**

2129-NAV1



**CLASS OF SERVICE**  
This is a full-rate Telegram or Cablegram unless its deferred character is indicated by a suitable symbol above or preceding the address.

**SYMBOLS**  
DL = Day Letter  
NT = Overnight Telegram  
LC = Deferred Cable  
NLT = Cable Night Letter  
Ship Radiogram

**WESTERN UNION**  
NEWCOMB CARLTON  
CHAIRMAN OF THE BOARD  
J. C. WILLEVER  
FIRST VICE-PRESIDENT

The filing time shown in the date line on telegrams and day letters is STANDARD TIME at point of origin. Time of receipt is STANDARD TIME at point of destination.

43 Govt Washington Dc 410 Pm 9/ 5/44

The secretary of war desires me to express his deep regret that your son second Lutenant George S. Learen has been reported missing in action since 4th September over Germany if further detail or other information are received you will be promptly notified

J A Ulio The Adjutant General



Carefully read instruction sheet before assembling. When you use glue or paint, do not use near open flame and use in well ventilated room. Keep out of reach of small children. Children must not be allowed to suck any part, or pull vinyl bag over the head.



Před započítím stavby si pečlivě prostudujte stavební návod. Při používání barev a lepidla pracujte v dobře větrané místnosti. Lepidla ani barvy nepoužívejte v blízkosti otevřeného ohně. Model není určen malým dětem, mohlo by dojít k požití drobných dílů.

## INSTRUCTION SIGNS

## \* INSTR. SYMBOLS

## \* INSTRUKTION SINNBILDEN

## \* SYMBOLES

## \* 記号の説明

OPTIONAL  
VOLBABEND  
OHNOUTSAND  
BROUSITOPEN HOLE  
VYVRTAT OTVORSYMETRICAL ASSEMBLY  
SYMETRICKÁ MONTÁŽREMOVE  
ODŘÍZNOUTREVERSE SIDE  
OTOČITAPPLY EDUARD MASK  
AND PAINT  
POUŽIT EDUARD MASK  
NABARVIT

## PARTS



## DÍLY



## TEILE

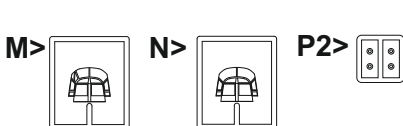
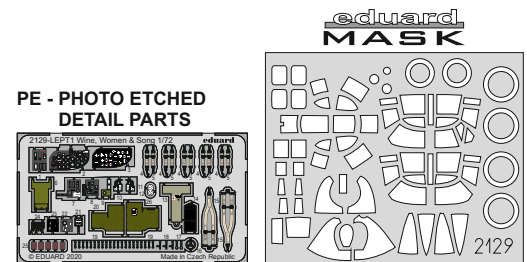
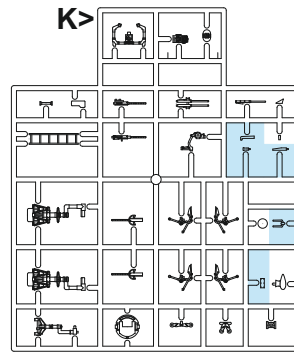
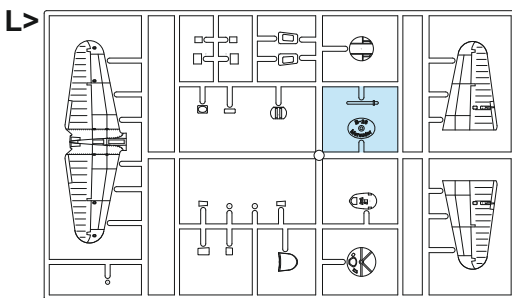
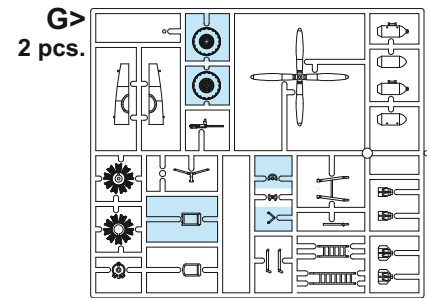
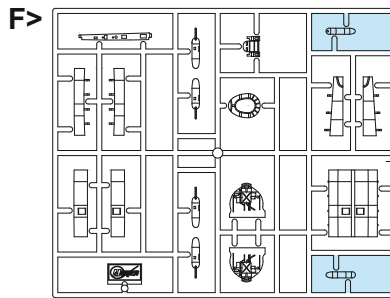
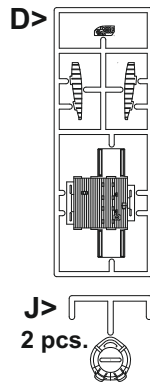
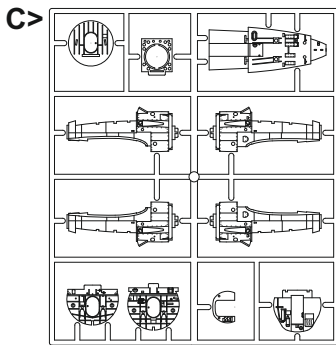
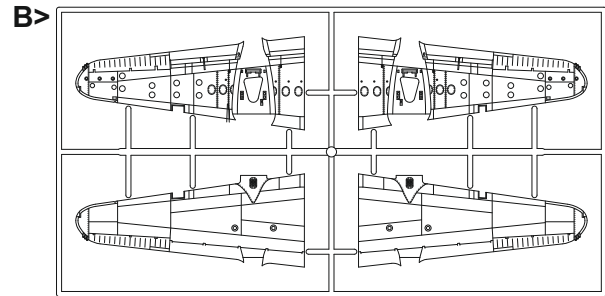
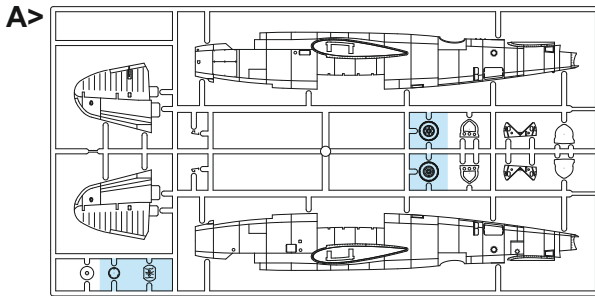


## PIÈCES



## 部品

## PLASTIC PARTS



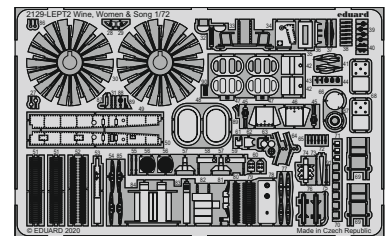
## RP - RESIN PARTS



R1

R2

R3



-Parts not for use. -Teile werden nicht verwendet. -Pièces à ne pas utiliser. -Tyto díly nepoužívejte při stavbě. - 使用しない部品

## COLOURS



## BARVY



## FARBEN



## PEINTURE

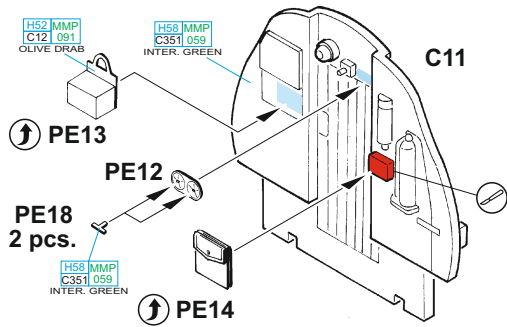
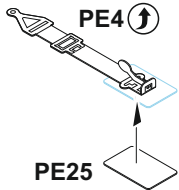


## 色

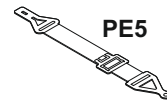
GSI Creos (GUNZE)		MISSION MODELS	
AQUEOUS	Mr.COLOR	PAINTS	
H6	C6	MMP-004	GREEN
H8	C8		SILVER
H11	C62	MMP-001	FLAT WHITE
H12	C33	MMP-047	FLAT BLACK
H52	C12	MMP-091	OLIVE DRAB
H53	C13		NEUTRAL GRAY
H58	C351	MMP-059	INTERIOR GREEN
H77	C137	MMP-040	TIRE BLACK
H90	C47		CLEAR RED
H91	C48		CLEAR YELLOW

GSI Creos (GUNZE)		MISSION MODELS	
AQUEOUS	Mr.COLOR	PAINTS	
H94	C138		CLEAR GREEN
H303	C303	MMP-066	GREEN
H306	C306	MMP-118	MEDIUM GRAY
H327	C327	MMP-101	RED
H329	C329	MMP-041	YELLOW
Mr.METAL COLOR		METALLICS	
	MC214	MMM-001	DARK IRON
Mr.COLOR SUPER METALLIC		METALLICS	
	SM201	MMC-001	SUPER FINE SILVER

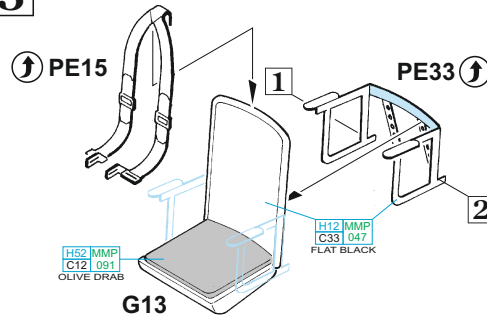
**1** 5 pcs.



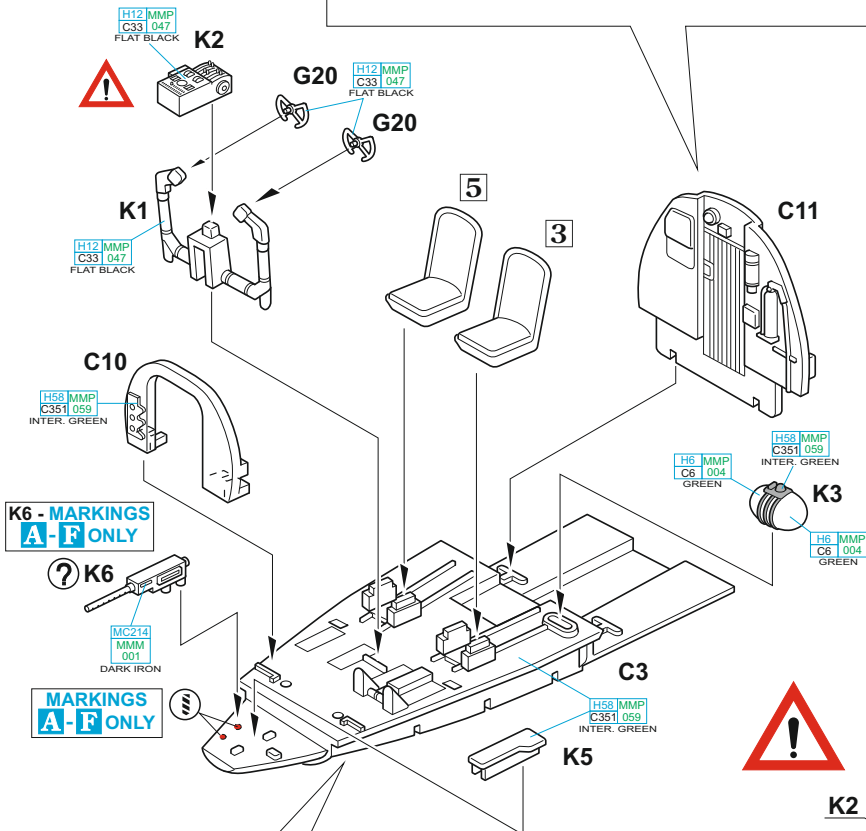
**2** 5 pcs.



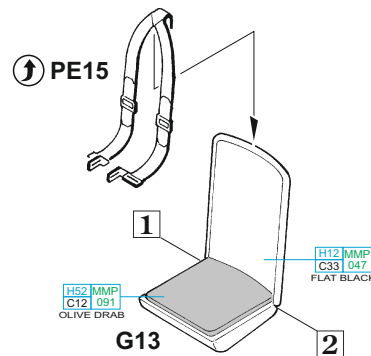
**3**



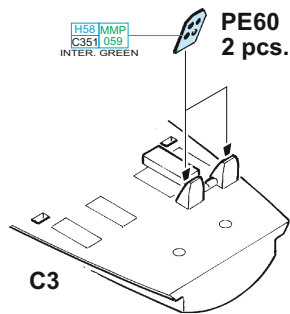
**4**



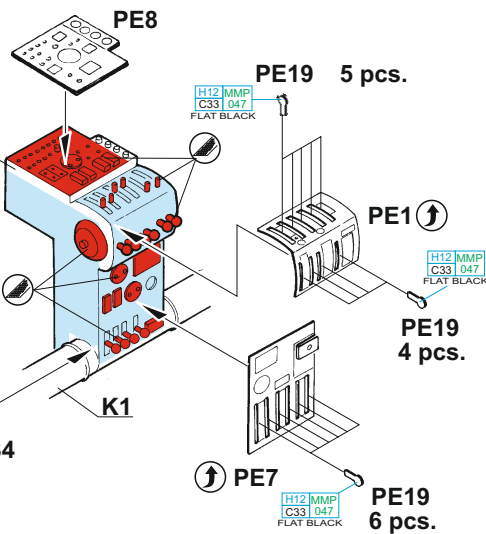
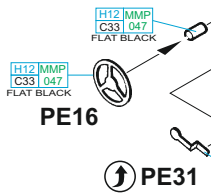
**5**



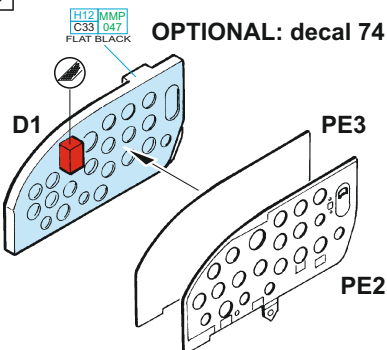
**6**



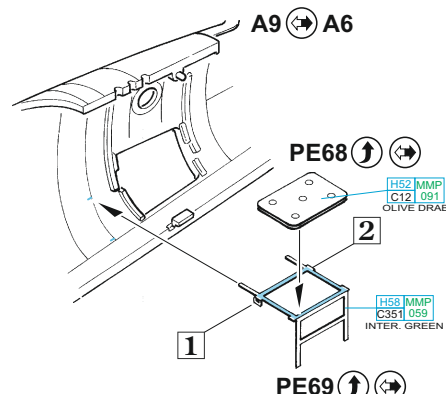
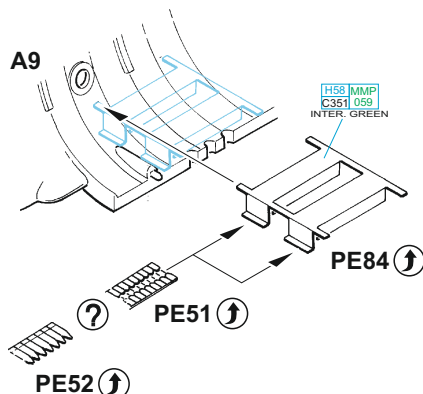
plastic  
ø - 0,4 mm  
l - 0,8 mm



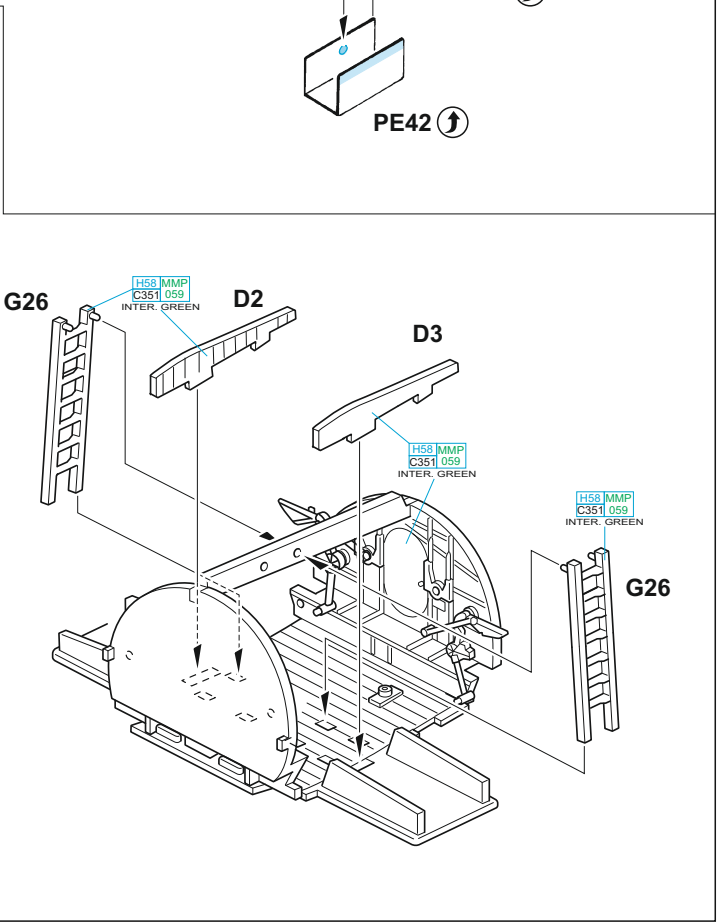
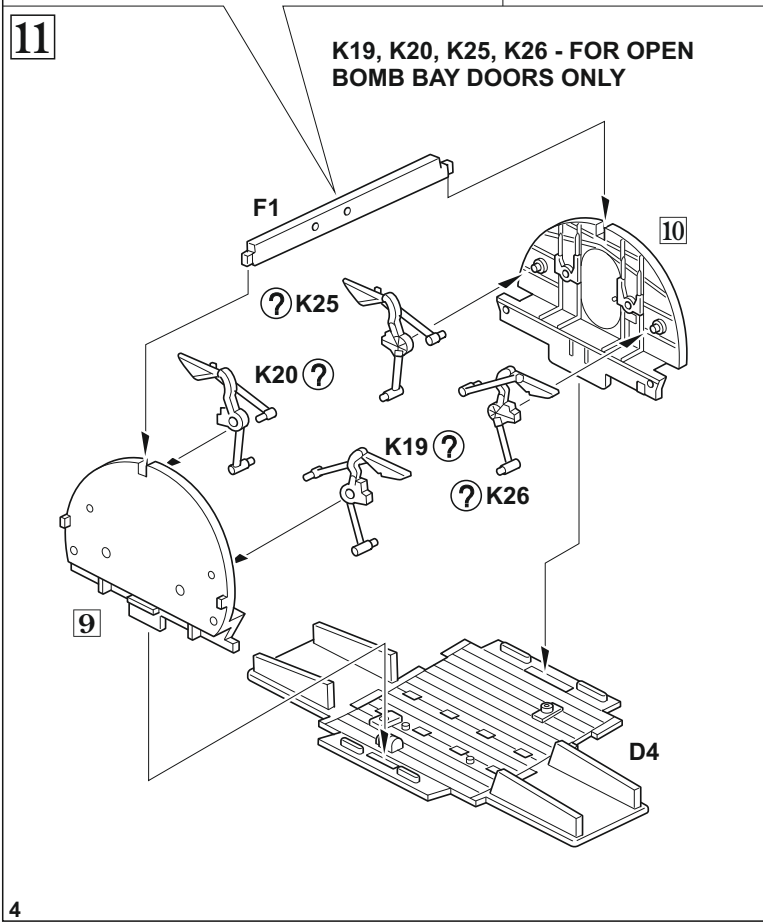
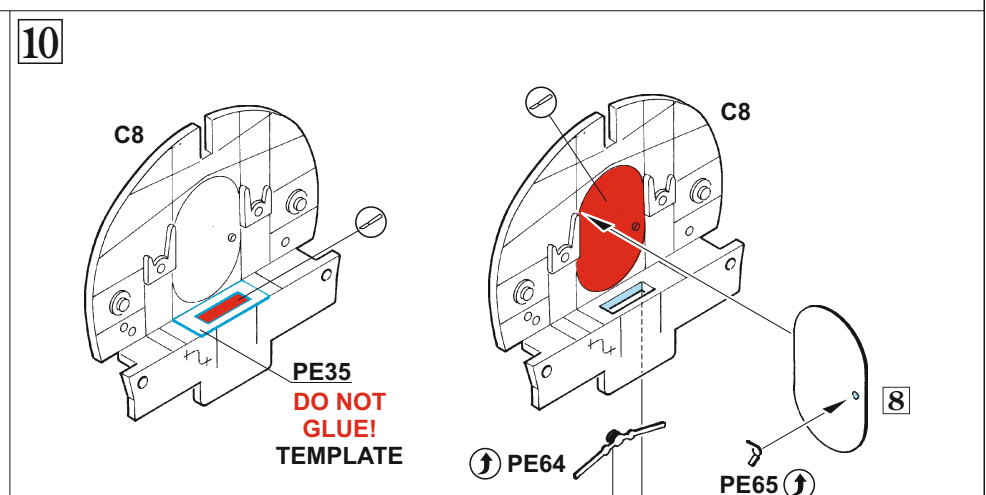
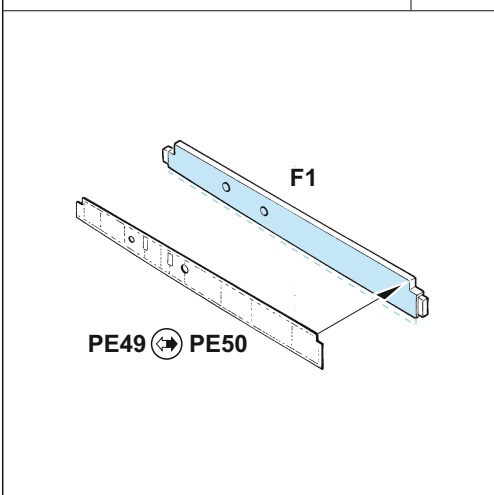
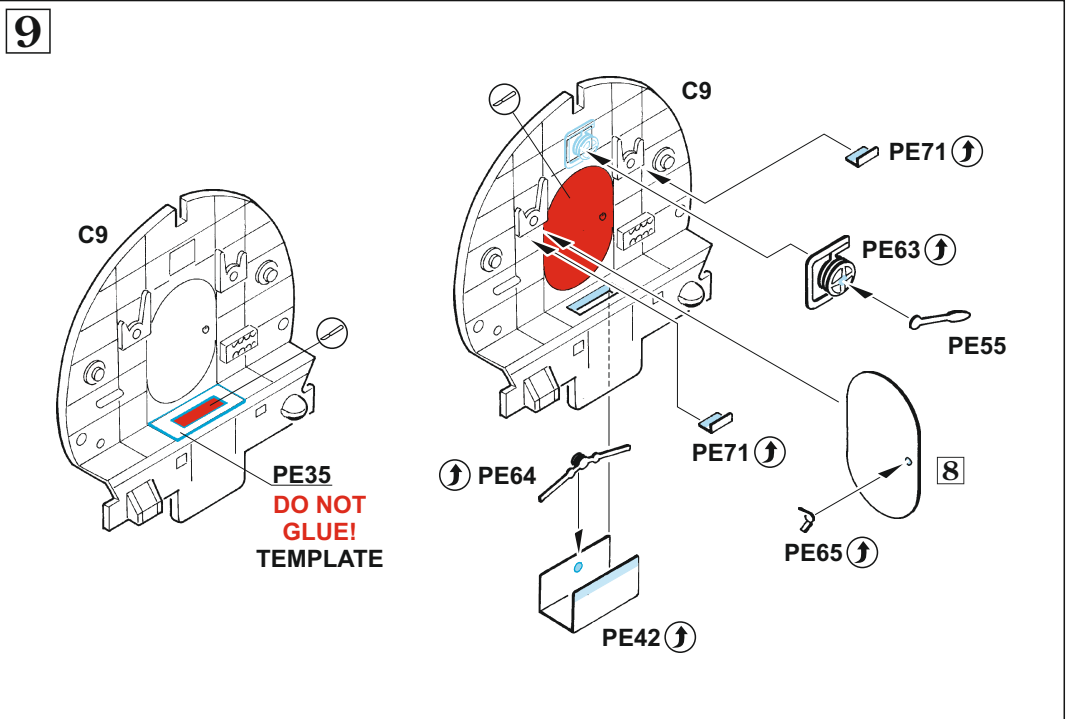
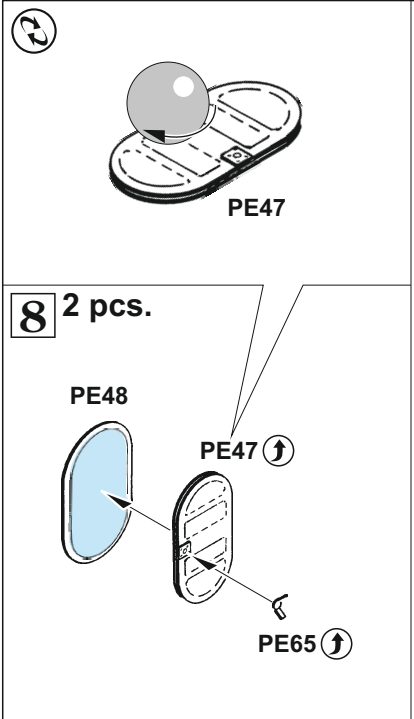
**6**



**7**

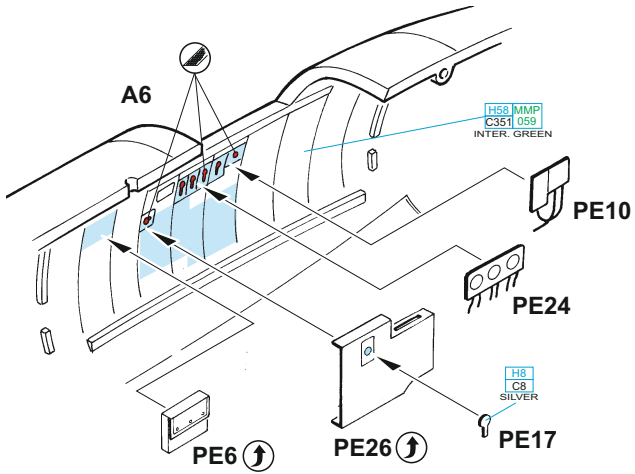




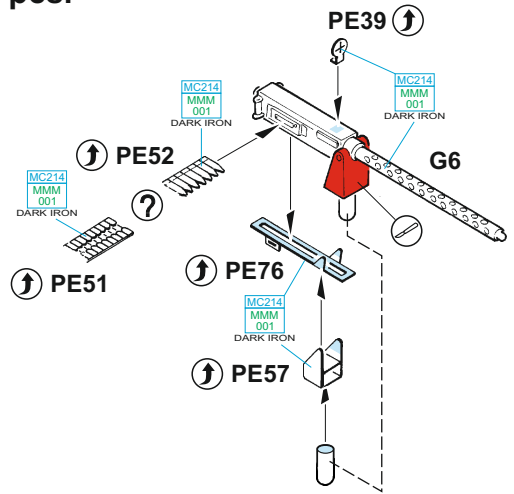




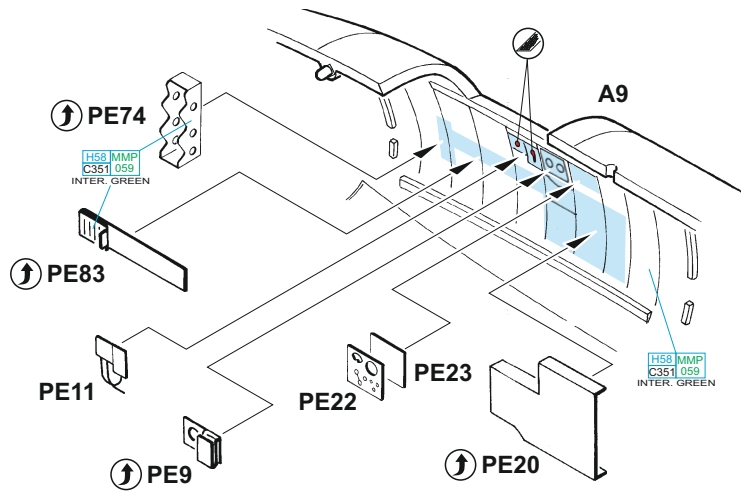
12



13 2 pcs.

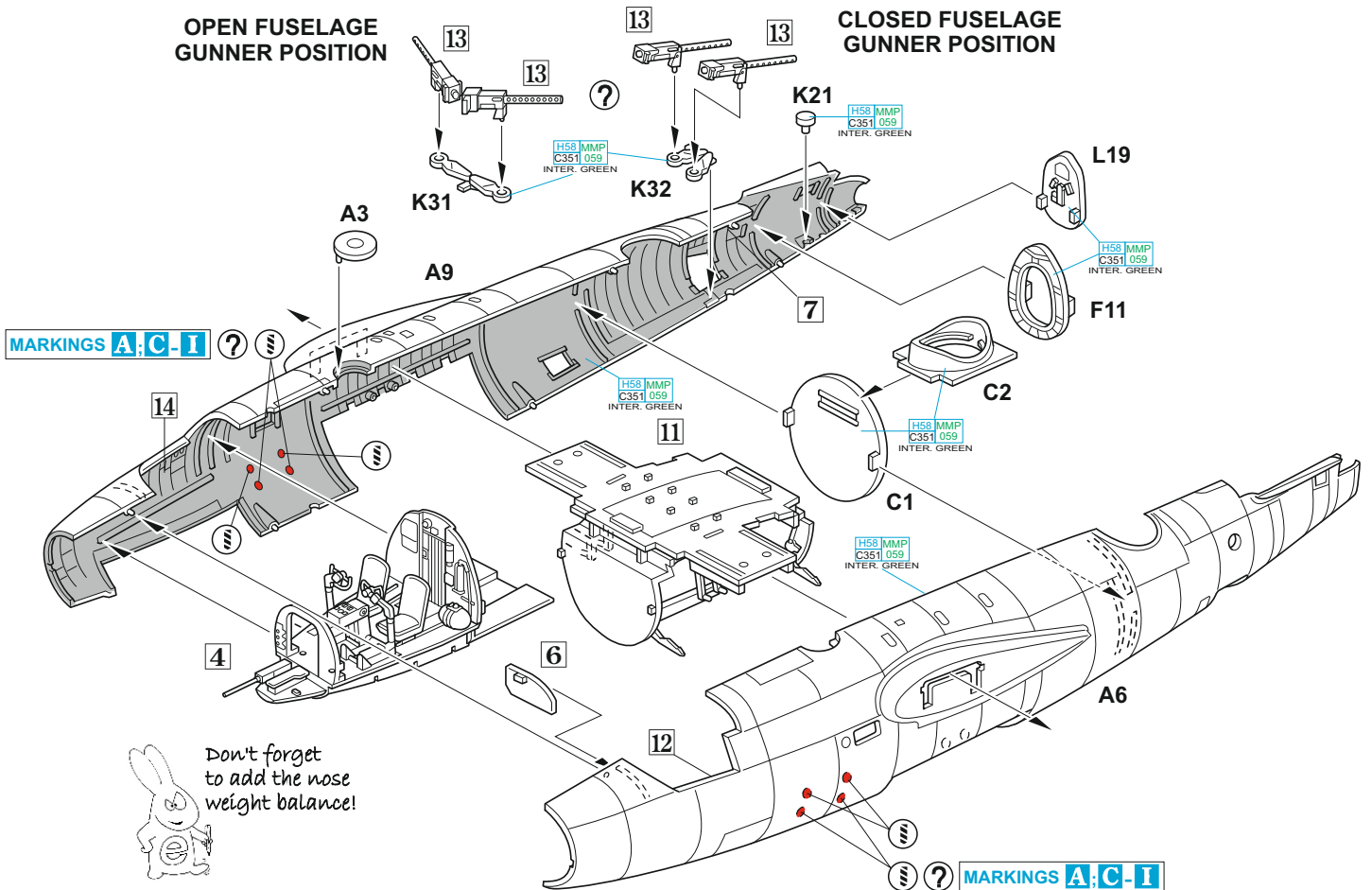


14



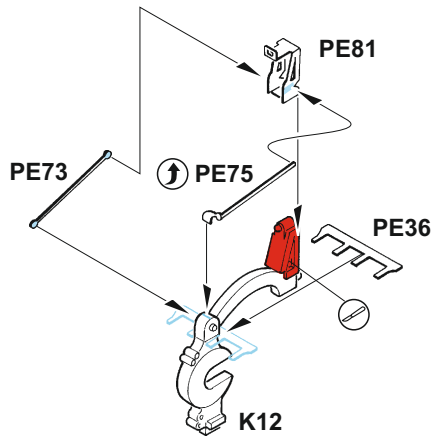
OPEN FUSELAGE GUNNER POSITION

CLOSED FUSELAGE GUNNER POSITION

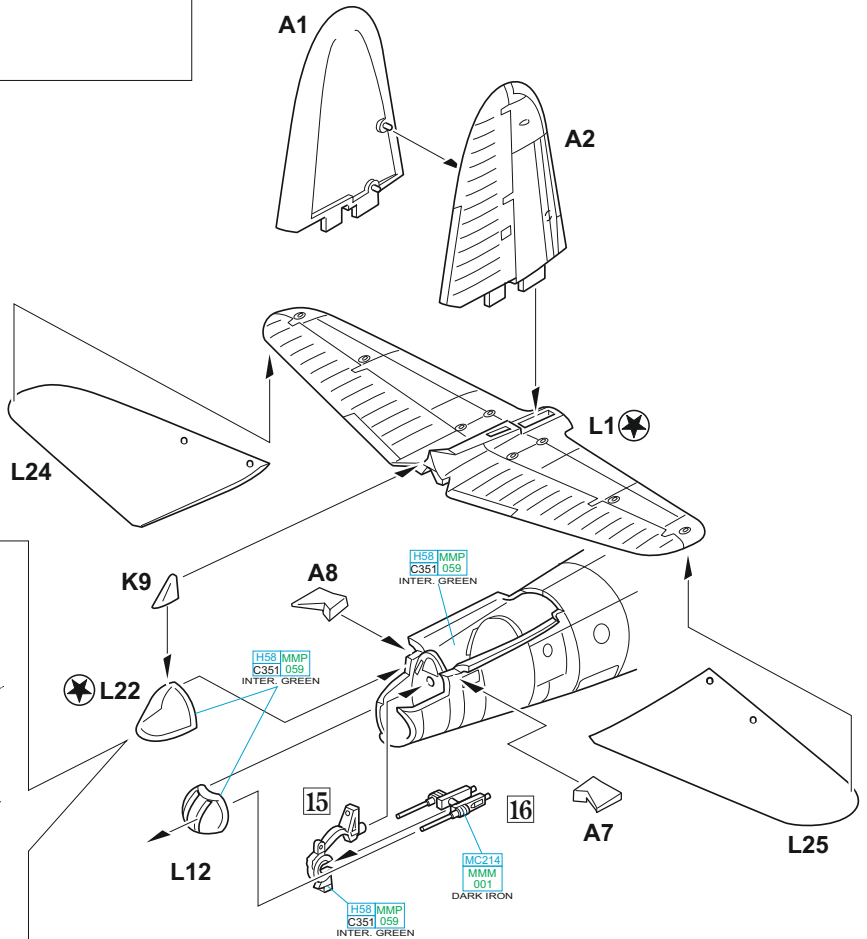
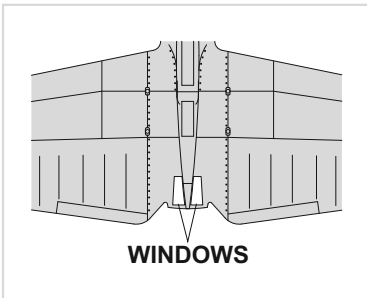
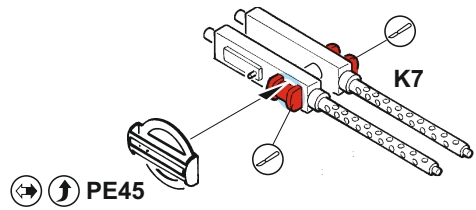


Don't forget to add the nose weight balance!

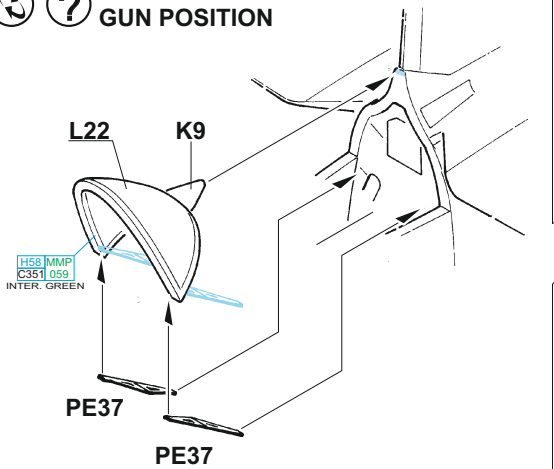
15



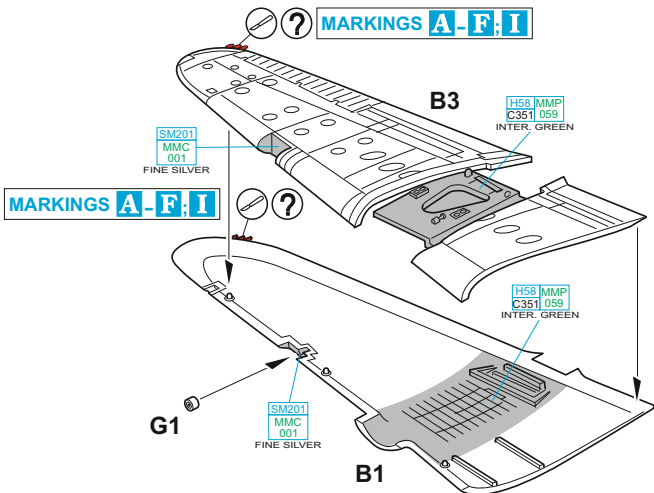
16



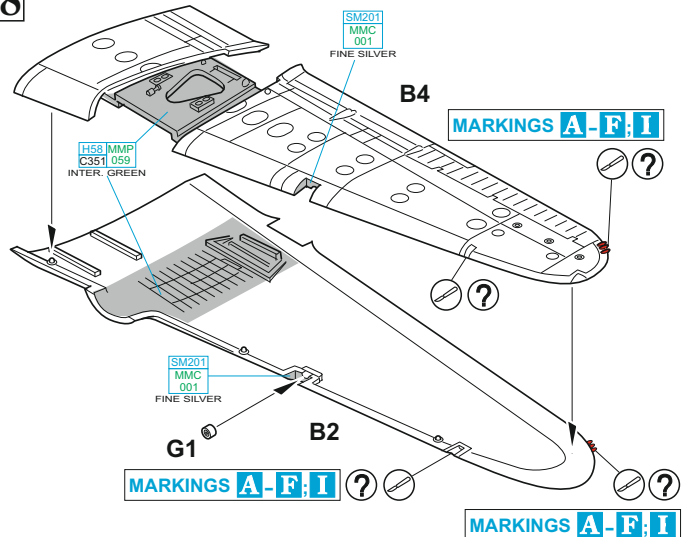
OPEN REAR GUN POSITION



17



18



2 pcs.

H12 MMP  
C33 047  
FLAT BLACK

PE30

G7

MC214  
MMM  
001  
DARK IRON

G8

PE30

19

C7

F13

G22

G22

G22

G22

G22

G22

G22

G22

G22

G22

G22

G22

G22

G22

G22

G22

G22

G22

G22

G22

G22

G22

G22

G22

G22

G22

G22

G22

G22

G22

G22

G22

G22

G22

G22

G22

G22

G22

G22

G22

G22

G22

G22

G22

G22

G22

G22

G22

G22

G22

20

C4

F12

G22

G22

G22

G22

G22

G22

G22

G22

G22

G22

G22

G22

G22

G22

G22

G22

G22

G22

G22

G22

G22

G22

G22

G22

G22

G22

G22

G22

G22

G22

G22

G22

G22

G22

G22

G22

G22

G22

G22

G22

G22

G22

G22

G22

G22

G22

G22

G22

G22

G22

21 2 pcs.

C6, C7 → C4, C5

∅ - 0,3 mm  
wire

PE46

22

21

19

H58 MMP  
C351 059  
INTER. GREEN

17

L20

23

21

20

H58 MMP  
C351 059  
INTER. GREEN

18

L21

24 2 pcs.

G17, G18

PE38

H52 MMP  
C12 091  
OLIVE DRAB

G17

G28

G27

G18

25 2 pcs.

G15, G16

PE38

H52 MMP  
C12 091  
OLIVE DRAB

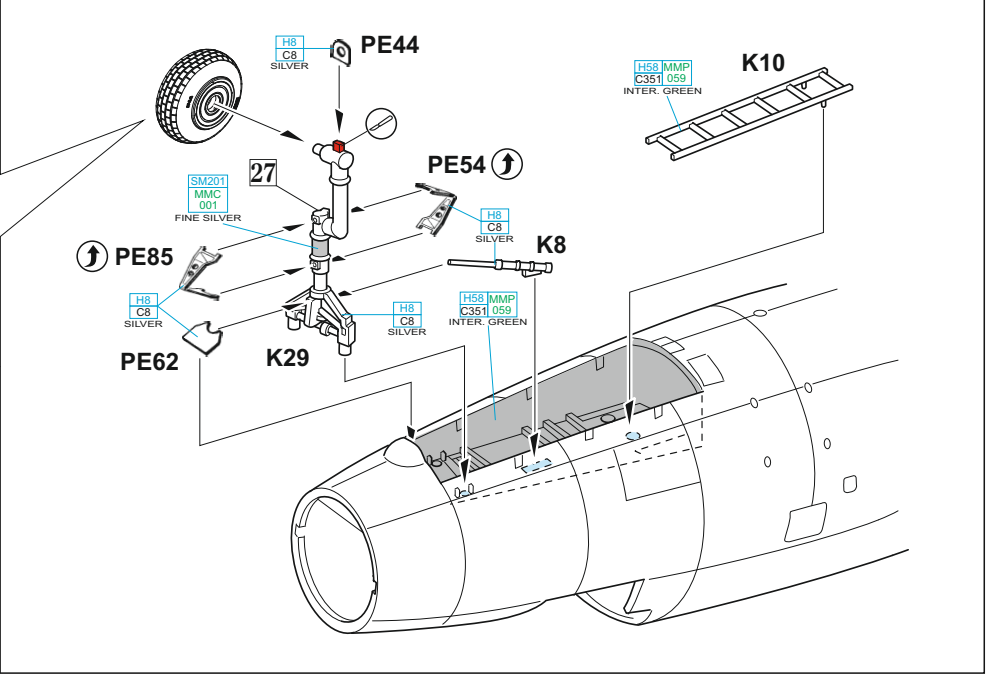
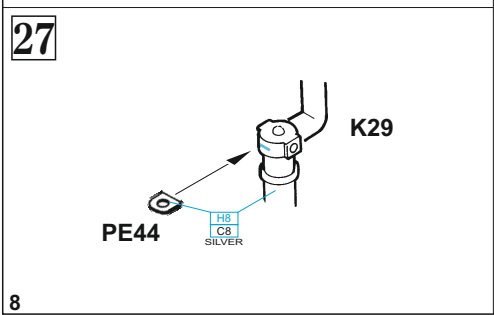
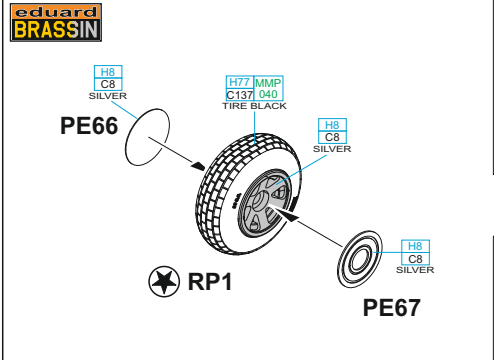
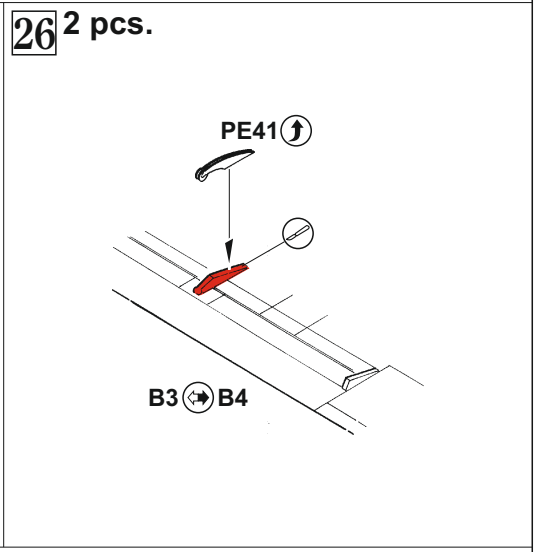
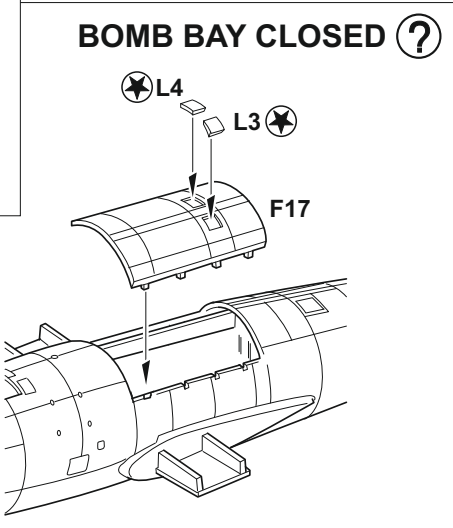
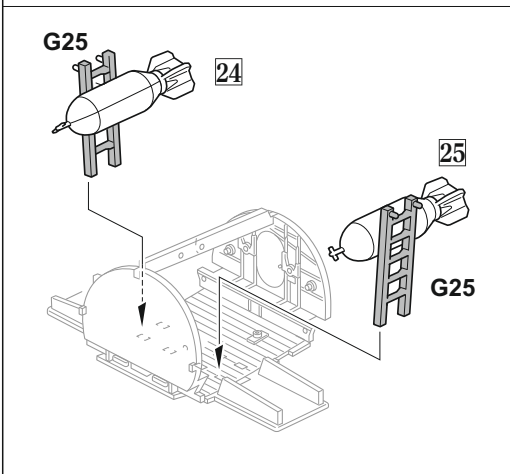
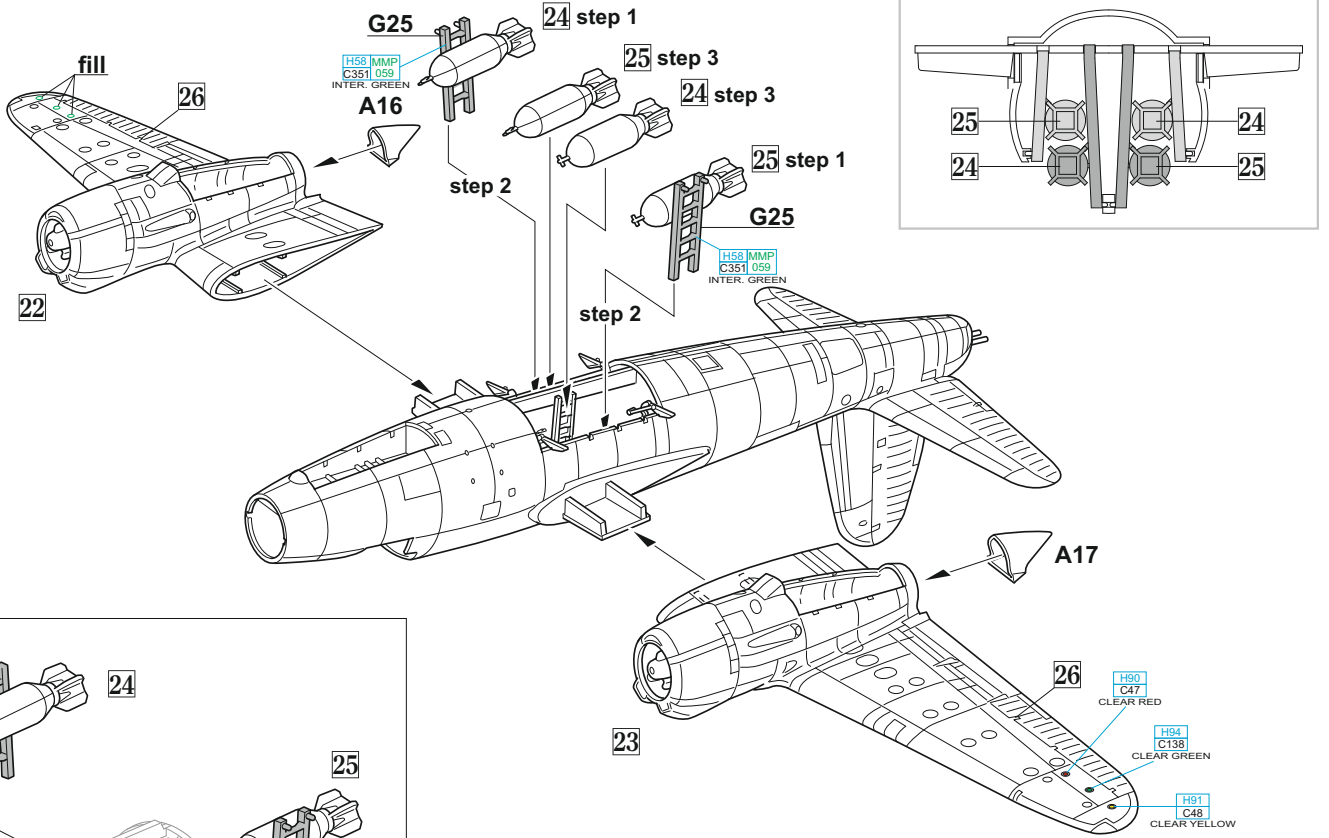
G15

G28

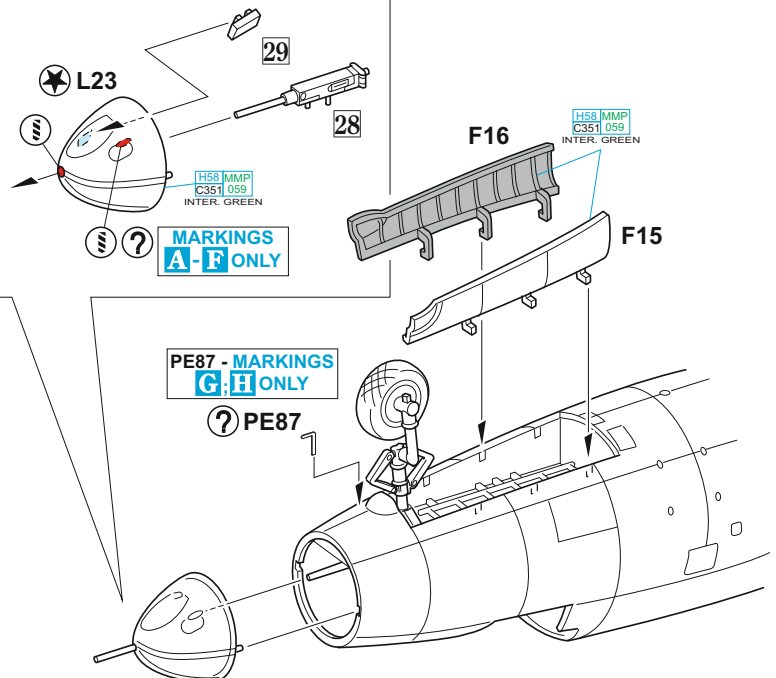
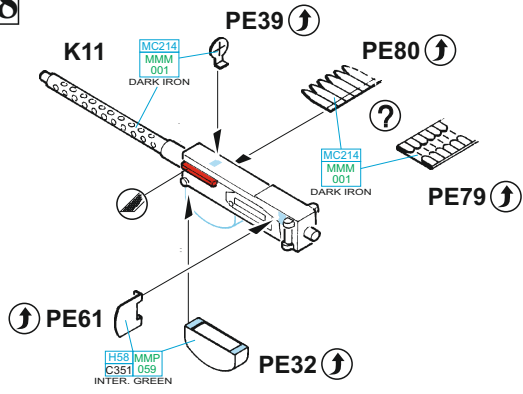
G27

G16

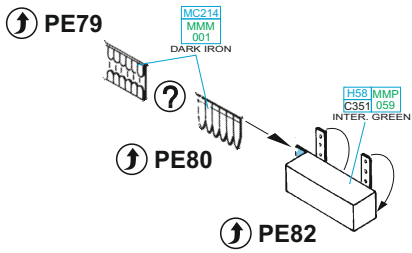




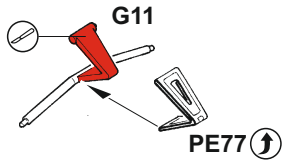
28



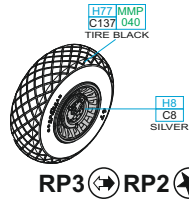
29



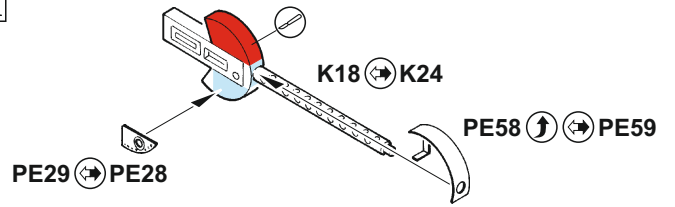
30 2 pcs.



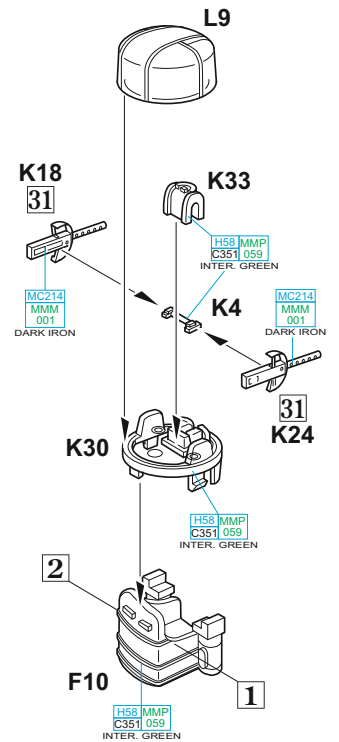
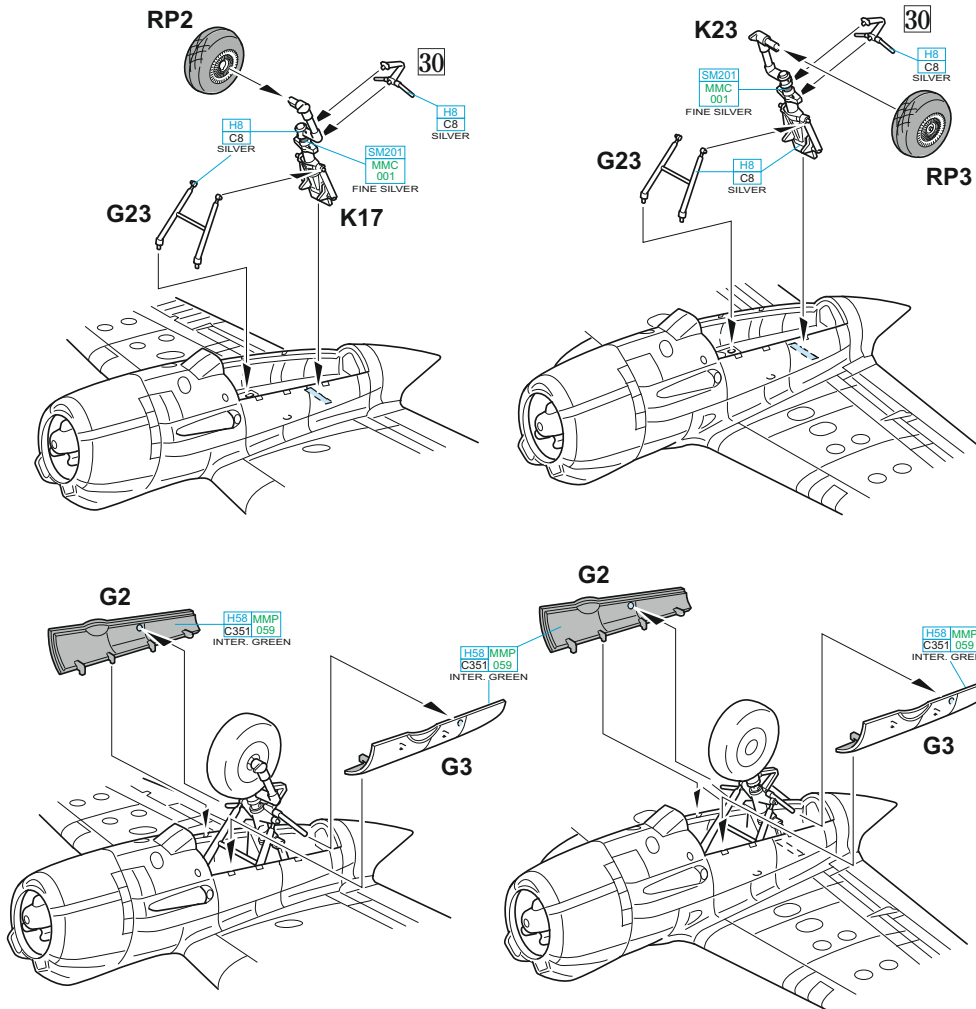
eduard BRASSIN

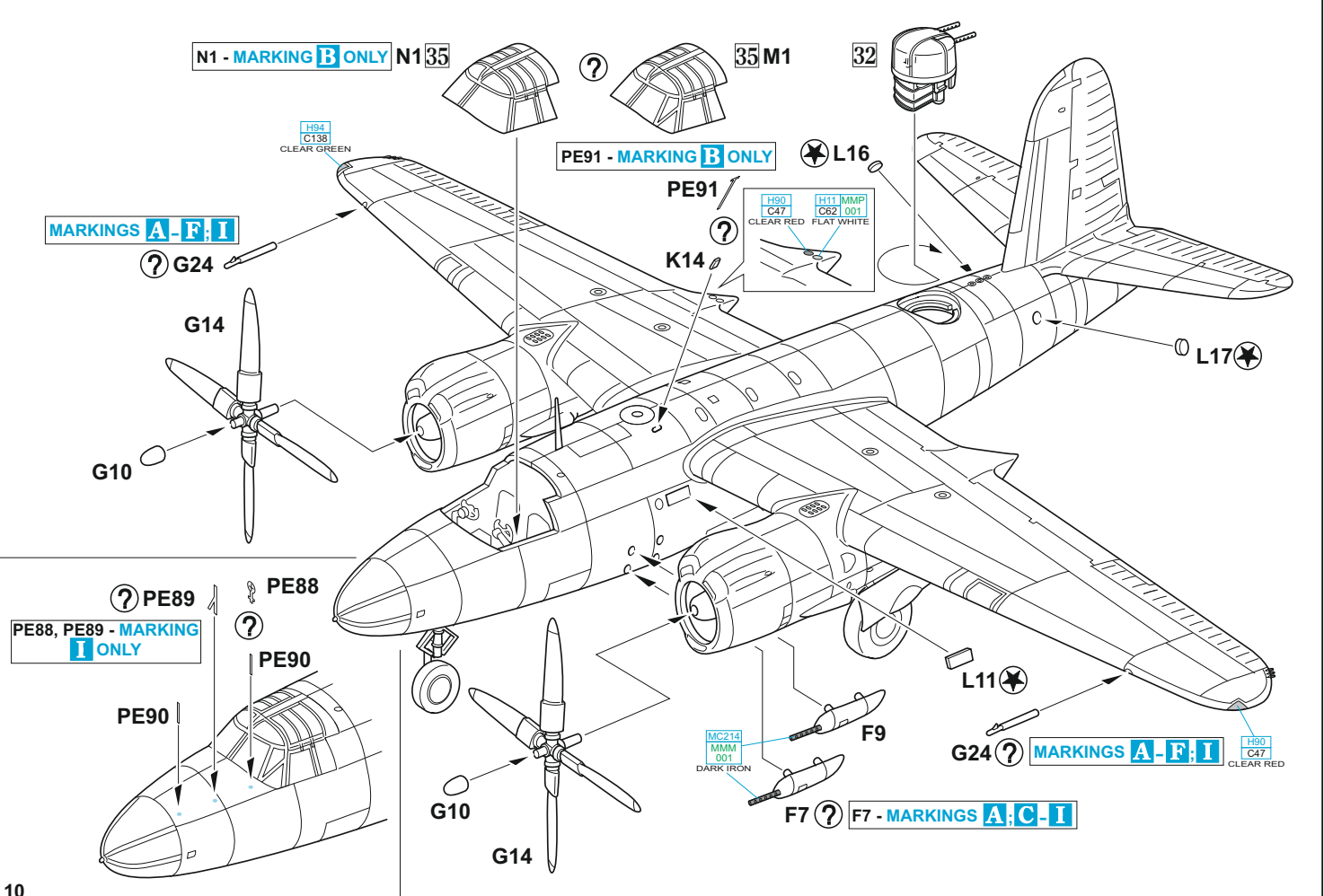
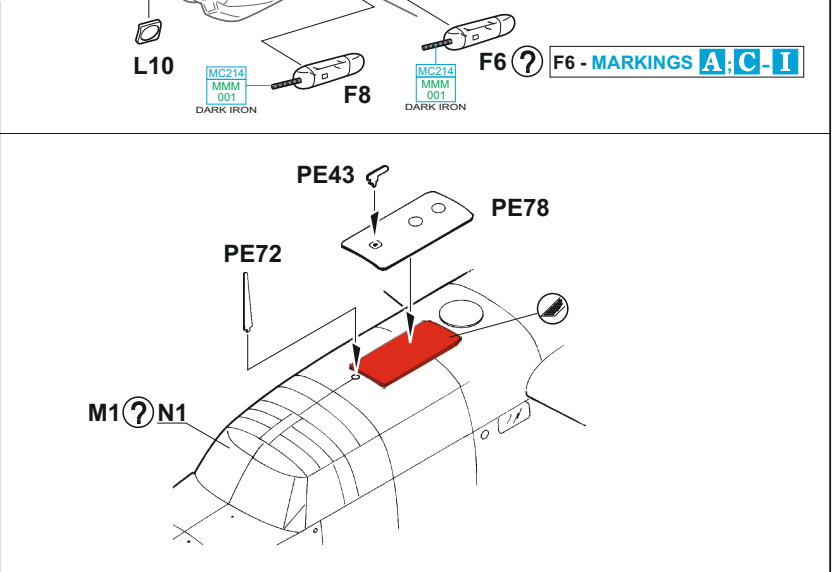
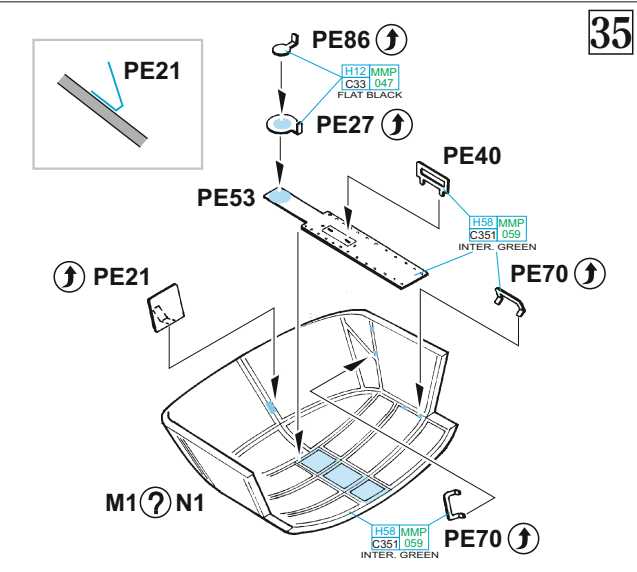
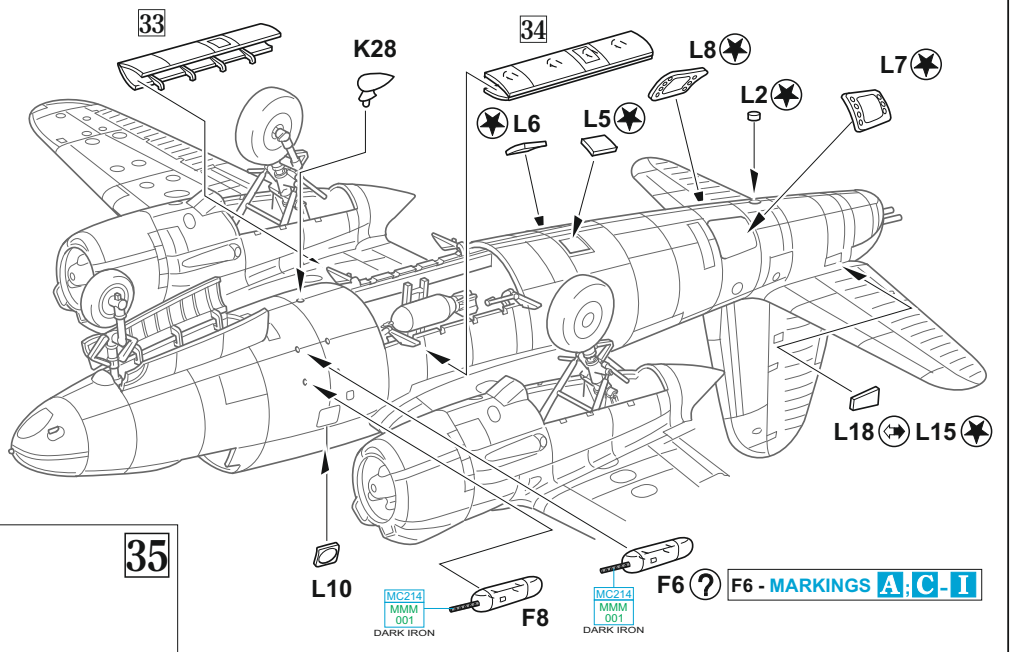
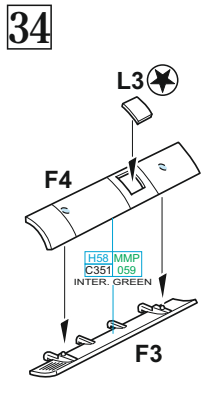
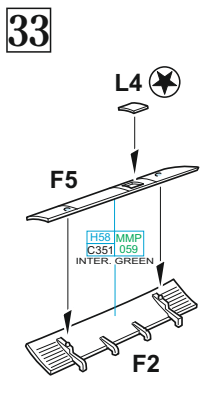


31

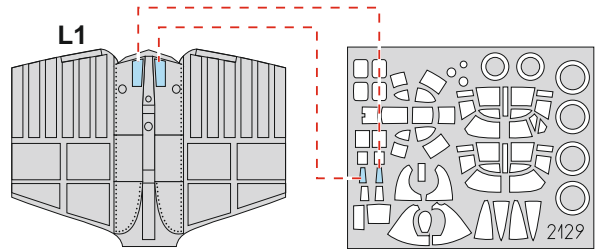
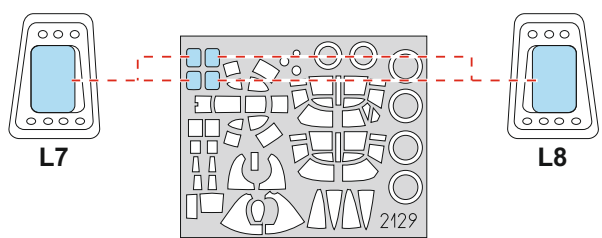
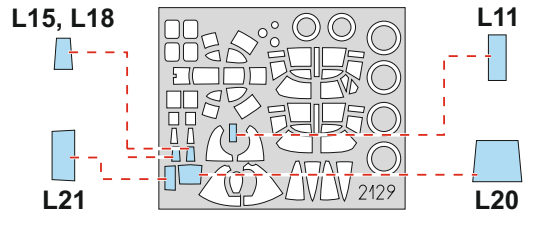
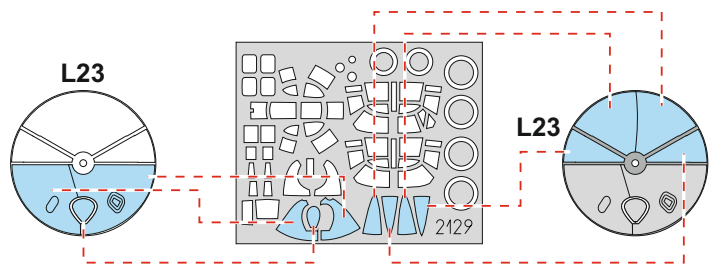
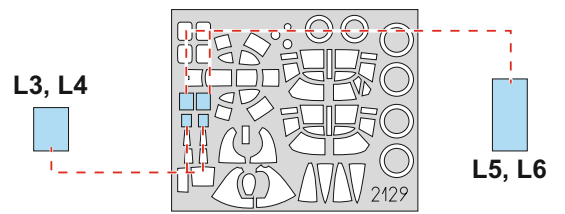
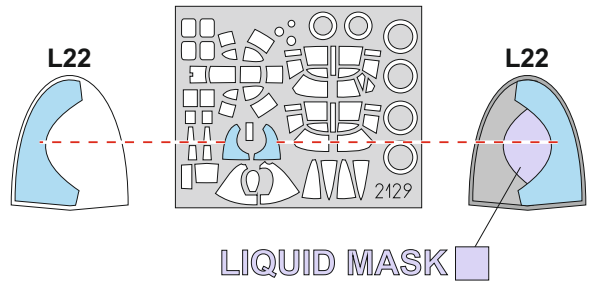
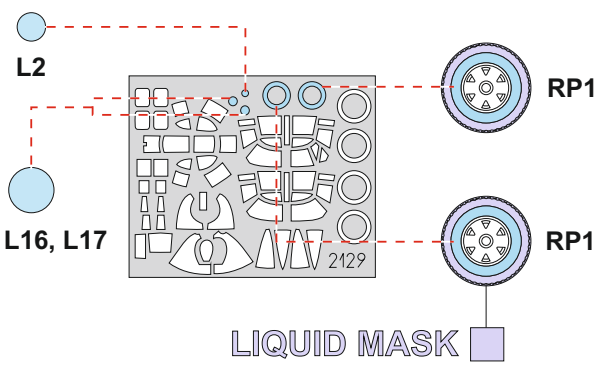
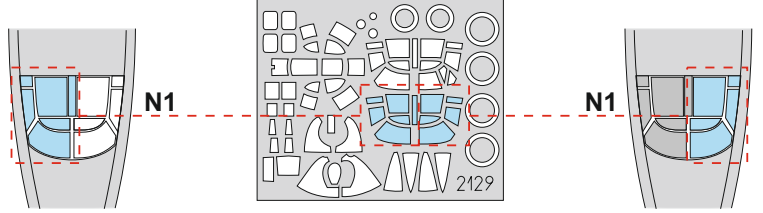
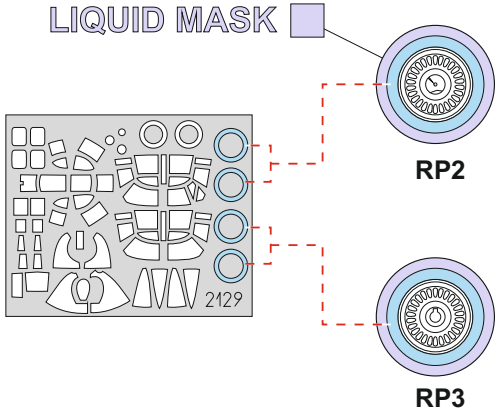
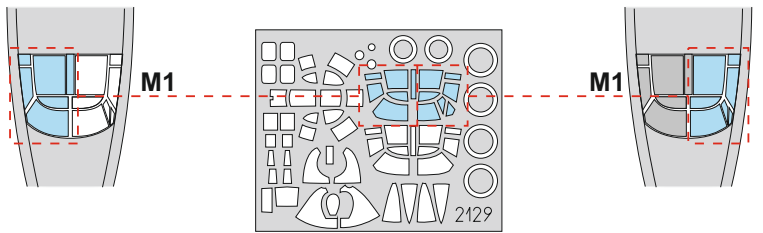


32





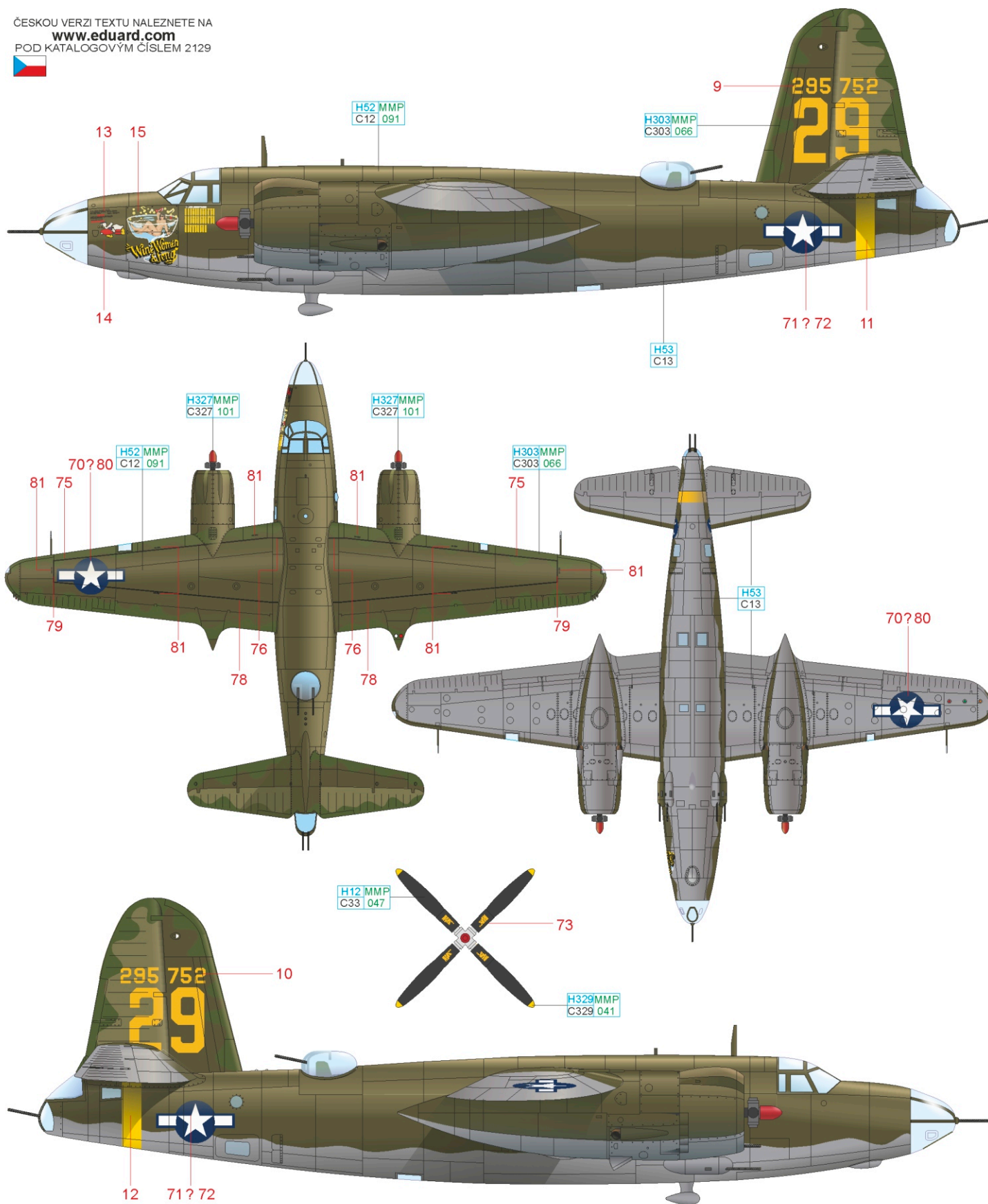




# A B-26B-45, s/n 42-95752, 442nd BS, 320th BG, 12th AF, Decimomannu, Sardinia, August 1944

The 320th BG was formed on June 19th, 1942 at MacDill, in Florida, equipped with the B-26 Marauder. At the end of 1942, the entire 320th Bombardment Group was transferred to Algeria, ground personnel arriving by sea while flight personnel flew their aircraft in over the south Atlantic to Africa. After the occupation of the territory, operations were switched over to Sicily and Italy. The units gradually left their Algerian bases, and from November 1943, they flew just shy of a full year from the former Italian base at Decimomannu in Sardinia. This aircraft, named 'Wine Women & Song', was adorned with noseart depicting a nude woman in a glass, and the unit marking consisting of Donald Duck holding a bomb in his hand. A standard USAAF camouflage scheme of Olive Drab on the upper surfaces with supplemental fields of medium green on the wings and tail surfaces was carried. The bottom surfaces were painted Neutral Grey. The yellow band forward of the rear gun position was the 320th BG, 42nd BW identifier.

ČESKOU VERZI TEXTU NALEZNETE NA  
[www.eduard.com](http://www.eduard.com)  
 POD KATALOGOVÝM ČÍSLEM 2129



RED	H327 MMP C327 101	GREEN	H303 MMP C303 066
OLIVE DRAB	H52 MMP C12 091	NEUTRAL GRAY	H53 C13
	YELLOW	H329 MMP C329 041	BLACK
		H12 MMP C33 047	

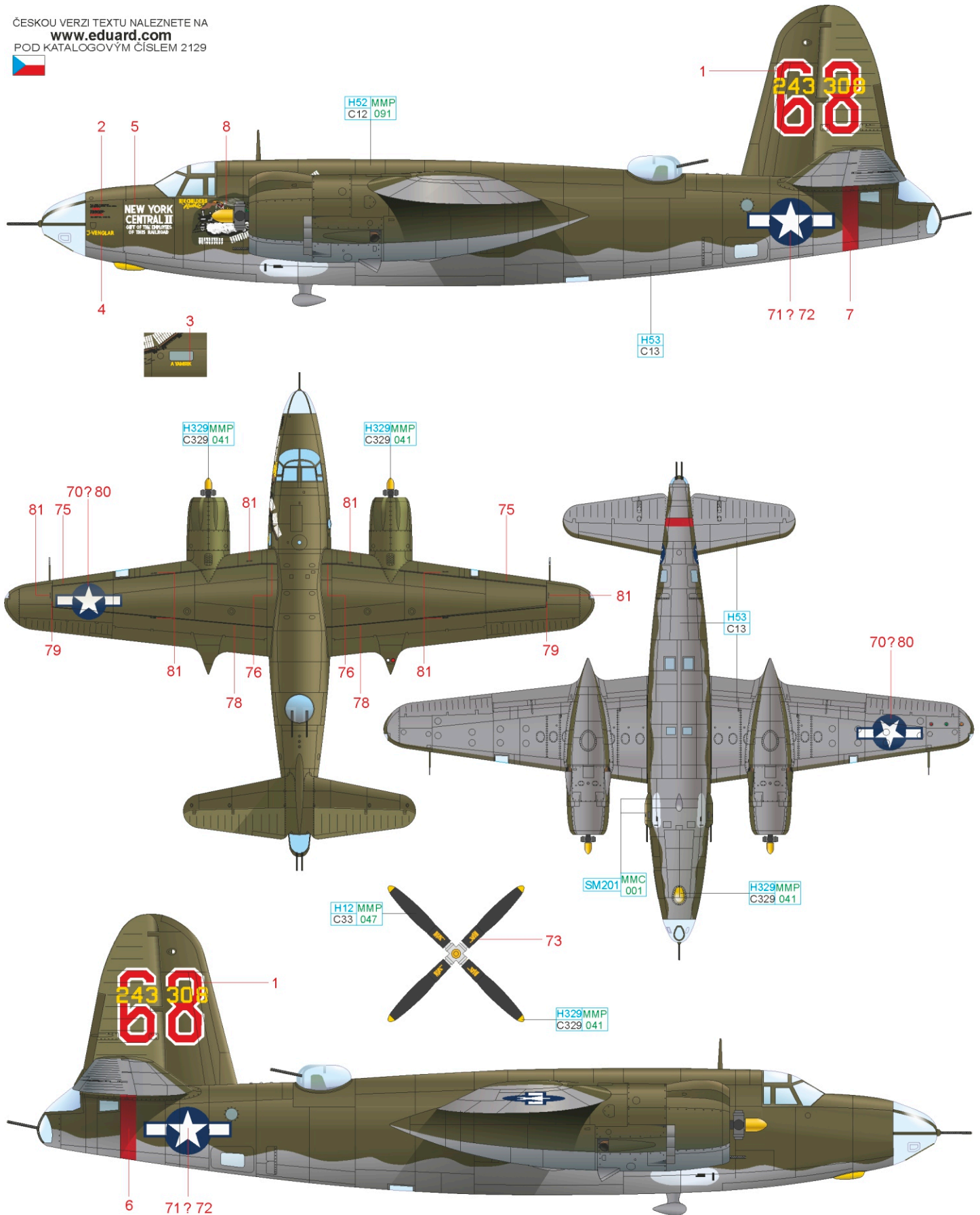
# B B-26B-40, s/n 42-43308, 95th BS, 17th BG, 12th AF, Villacidro, Sardinia, Autumn 1944

Over the course of the Second World War, employees of the railroad company New York Central accumulated the funds required to purchase two aircraft for the United States Army Air Force. One was a bomber christened New York Central II, and was handed over to the USAAF in September 1943. During its career with the 17th BG, it flew 103 missions (the first of which was a support mission for the battle at Monte Cassino, the last being a raid on Winnweiler in Germany) before being brought down by flak on January 1st, 1945. The crew perished, with the exception of two gunners who survived and sat out the remainder of the war in a POW camp. The airplane dropped 322,000 pounds of bombs during its combat career.

ČESKOU VERZI TEXTU NALEZNETE NA

[www.eduard.com](http://www.eduard.com)

POD KATALOGOVÝM ČÍSLEM 2129



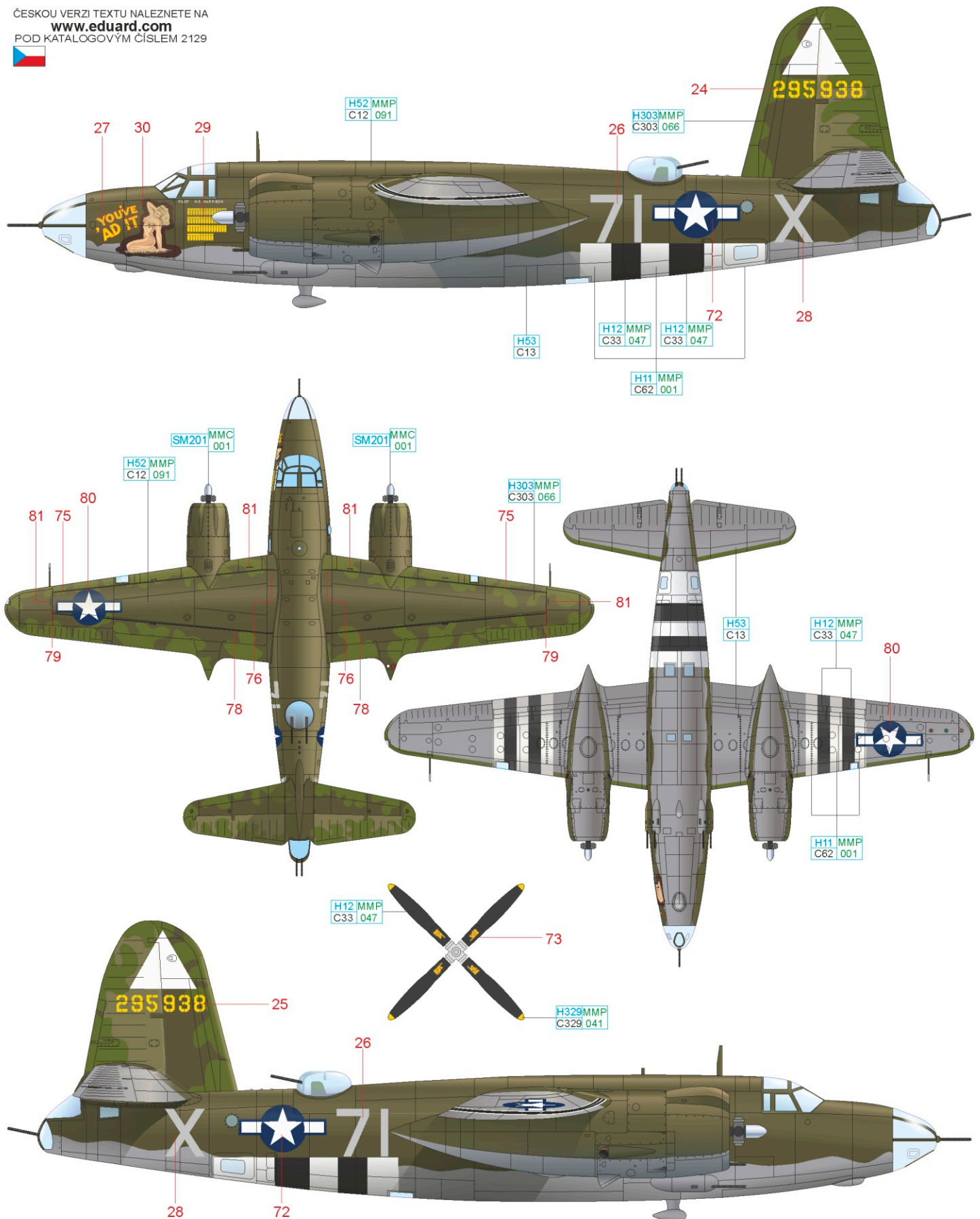
SUPER FINE SILVER	SM201 MMC 001	NEUTRAL GRAY	H53 C13	YELLOW	H329MMP C329 041	BLACK	H12 MMP C33 047
OLIVE DRAB	H52 MMP C12 091						



**C B-26B-50, s/n 42-95952/ 42-95938, 497th BS, 344th BG, 9th AF, Cormeilles-en-Vexin, France, Autumn 1944**

This aircraft is not only interesting for its artistically applied noseart of a nude young lady, applied by the plane's pilot, Jack Havener, to the nose of 42-95952, but also for the fact that it was actually made up of two aircraft. The data placards on the nose carry the serial number 42-95952, while the serial on the tail bore the number 295938. The camouflage scheme consisted of the standard Olive Drab/Medium Green/Neutral Grey, and invasion stripes were carried on the wings and fuselage.

ČESKOU VERZI TEXTU NALEZNETE NA  
**www.eduard.com**  
 POD KATALOGOVÝM ČÍSLEM 2129

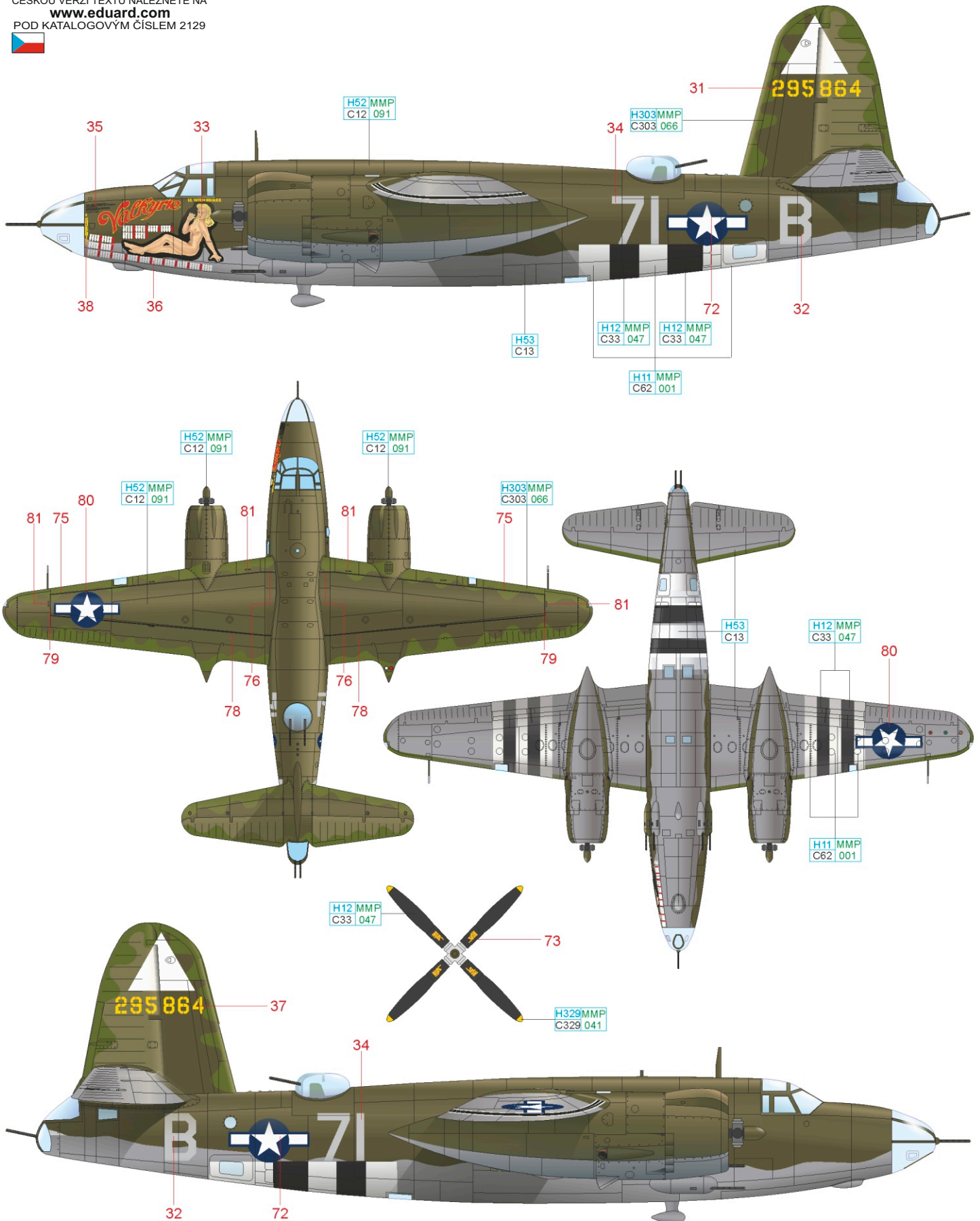


GREEN	H303MMP C303 066	SUPER FINE SILVER	SM201 MMC 001	NEUTRAL GRAY	H53 C13	YELLOW	H329MMP C329 041	BLACK	H12 MMP C33 047	WHITE	H11 MMP C62 001
OLIVE DRAB	H52 MMP C12 091										

# D B-26B-50, s/n 42-95864, 497th BS, 344th BG, 9th AF, Cormeilles-en-Vexin, France, Autumn 1944

Same as the aircraft depicted on page 14 from the same unit, Jack Havener was entrusted with the artistic application of noseart depicting a nude woman with the name Valkyrie. Fate would prove a harsh mistress for the aircraft flown by Lt. Witherbee, later handed over to the crew led by Lt. Bernard, on January 28th, 1945, when engine failure forced the pilot to try and return back to Cormeilles-en-Vexin. The resulting crash had no survivors.

ČESKOU VERZI TEXTU NALEZNETE NA  
[www.eduard.com](http://www.eduard.com)  
 POD KATALOGOVÝM ČÍSLEM 2129



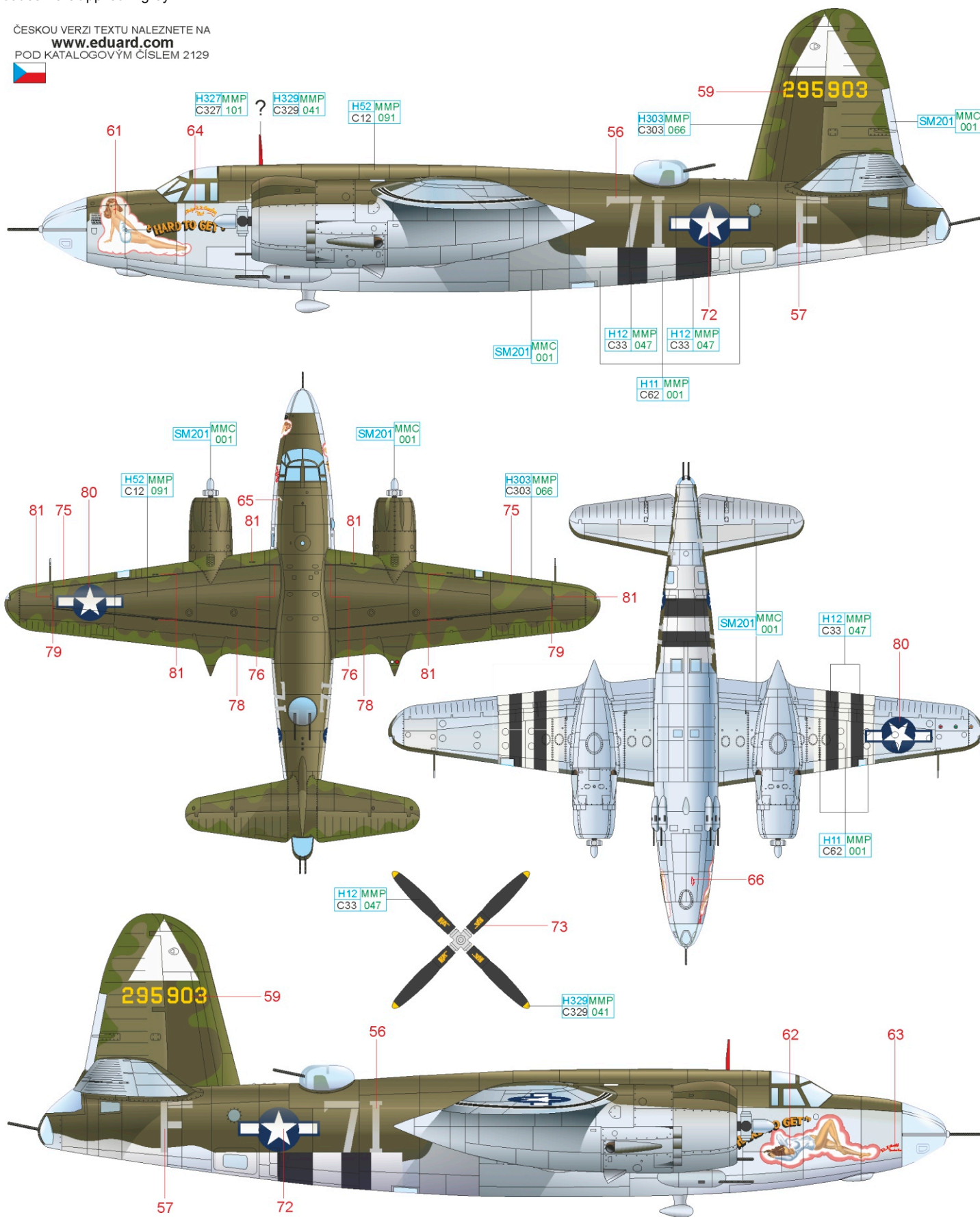
GREEN	H303MMP C303 066	NEUTRAL GRAY	H53 C13	YELLOW	H329MMP C329 041	BLACK	H12 MMP C33 047	WHITE	H11 MMP C62 001
OLIVE DRAB	H52 MMP C12 091								



# E B-26B-50, s/n 42-95903, 495th BS, 344th BG, 9th AF, Stansted, United Kingdom, July 1944

The 344th Bombardment Group was established in September, 1942 at MacDill in Florida, and was equipped with the B-26 Marauder. After being relocated to the base at Stansted in United Kingdom as a component unit of the 9th Air Force, missions were conducted against military targets and the transportation network in German occupied France, the Netherlands and Belgium from February 1944. One of the aircraft of the component 597th Bombardment Squadron was this aircraft, once again, one that was decorated with noseart of a scantily clad woman, courtesy of Jack Havener. This Marauder, originally delivered in natural metal, was subsequently camouflaged in Olive Drab on the upper and side surfaces, and photographs indicated peeling of the paint. At this time, the codes were applied in grey.

ČESKOU VERZI TEXTU NALEZNETE NA  
[www.eduard.com](http://www.eduard.com)  
 POD KATALOGOVÝM ČÍSLEM 2129

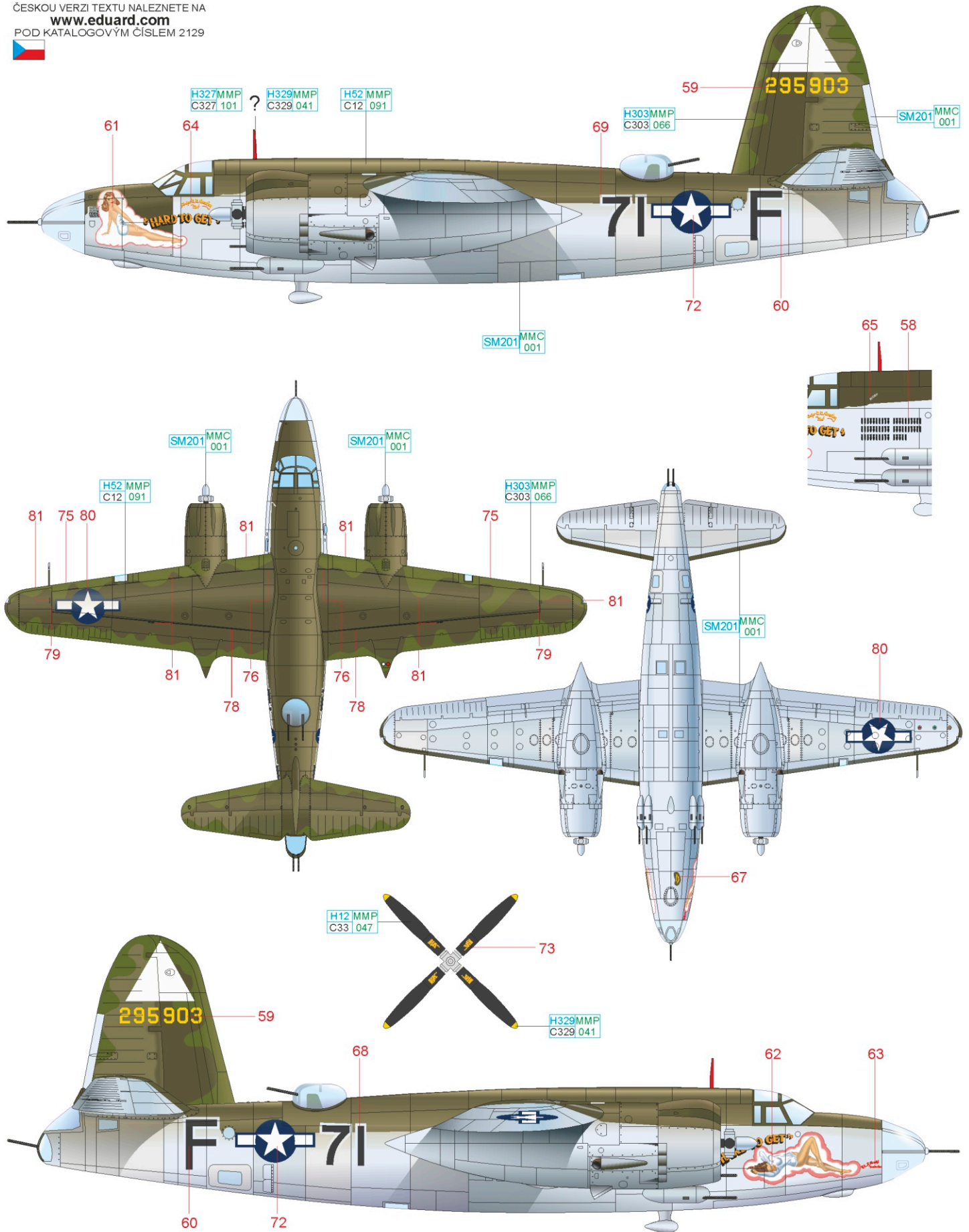


SUPER FINE SILVER	SM201 MMC 001	GREEN	H303MMP C303 066	RED	H327MMP C327 101	
OLIVE DRAB	H52 MMP C12 091	NEUTRAL GRAY	H33 C13	YELLOW	H329MMP C329 041	
				BLACK	H12 MMP C33 047	
					WHITE	H11 MMP C62 001

# F B-26B-50, s/n 42-95903, 495th BS, 344th BG, 9th AF, Cormeilles-en-Vexin, France, Autumn 1944

In comparison with this aircraft from the summer of 1944 (see previous page), the Olive drab colour was removed from the rear section of the fuselage in the fall, and the fuselage codes were rejuvenated in black. The invasion stripes were removed from the lower surfaces of the wings and fuselage.

ČESKOU VERZI TEXTU NALEZNETE NA  
[www.eduard.com](http://www.eduard.com)  
 POD KATALOGOVÝM ČÍSLEM 2129



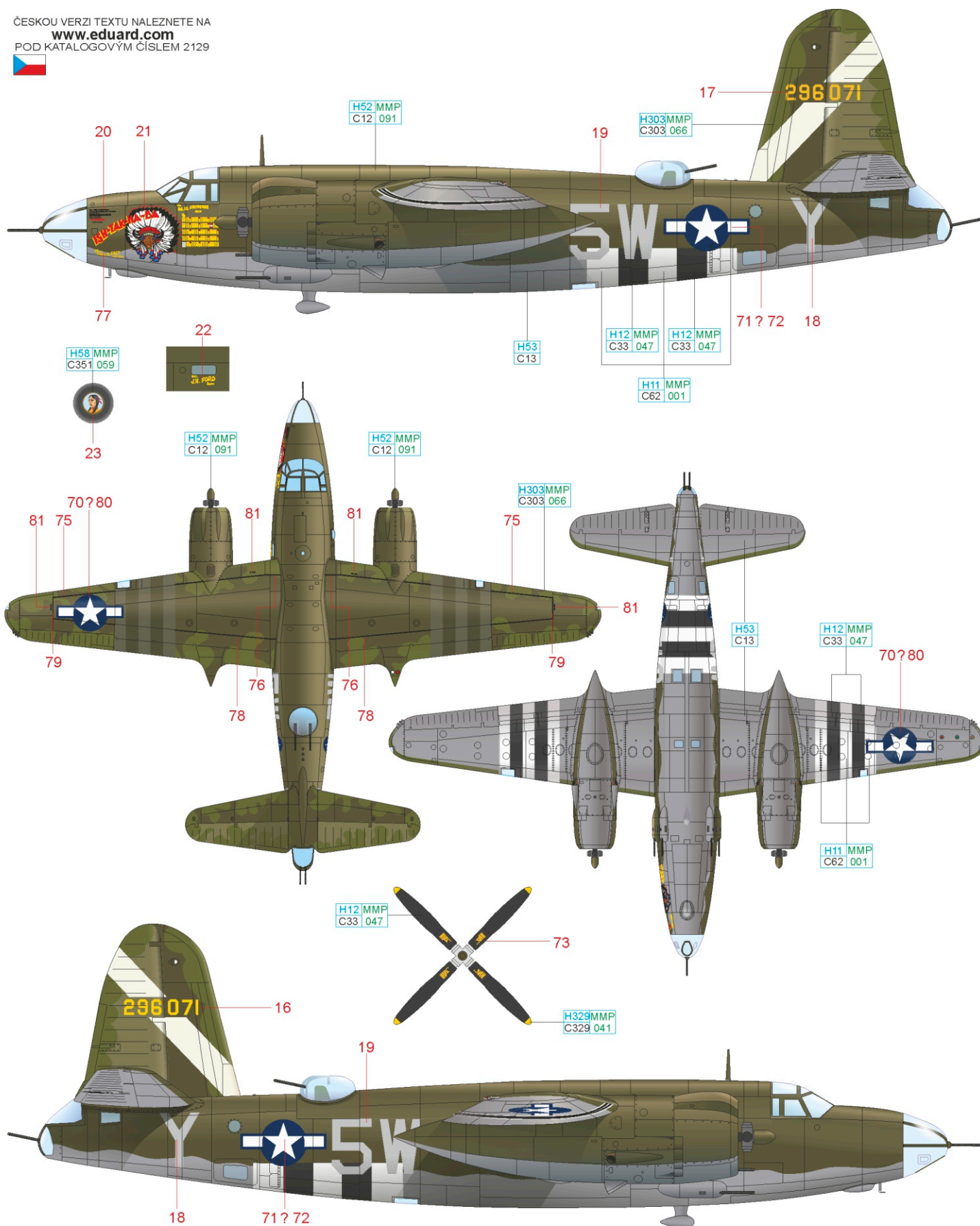
SUPER FINE SILVER	SM201 MMC 001	GREEN	H303 MMP C303 066
OLIVE DRAB	H52 MMP C12 091	YELLOW	H329 MMP C329 041
		BLACK	H12 MMP C33 047
			RED
			H327 MMP C327 101



# G B-26B-55, s/n 42-96071, 584th BS, 394th BG, 9th AF, Cambrai/Niergnies, France, May 1945

Ish Tak Ha Ba (Dakota language meaning 'Sleepy Eye') was named by the aircraft's captain, Joseph E. Farrell, and he also had the head of an Indian Chief painted on the airplane's nose. Joseph Farrell hailed from the small town of Sleepy Eye, and he joined the USAAC after the beginning of the war. He underwent pilot training, after which he was assigned to the 584th BS, a unit equipped with the Marauder. After being relocated to Europe, Joseph Farrell flew a total of 67 combat missions before the end of the war. In September 1945, he joined Northwest Airlines, where he flew until he was sixty, and even after retirement, he never left flying.

ČESKOU VERZI TEXTU NALEZNETE NA  
[www.eduard.com](http://www.eduard.com)  
 POD KATALOGOVÝM ČÍSLEM 2129

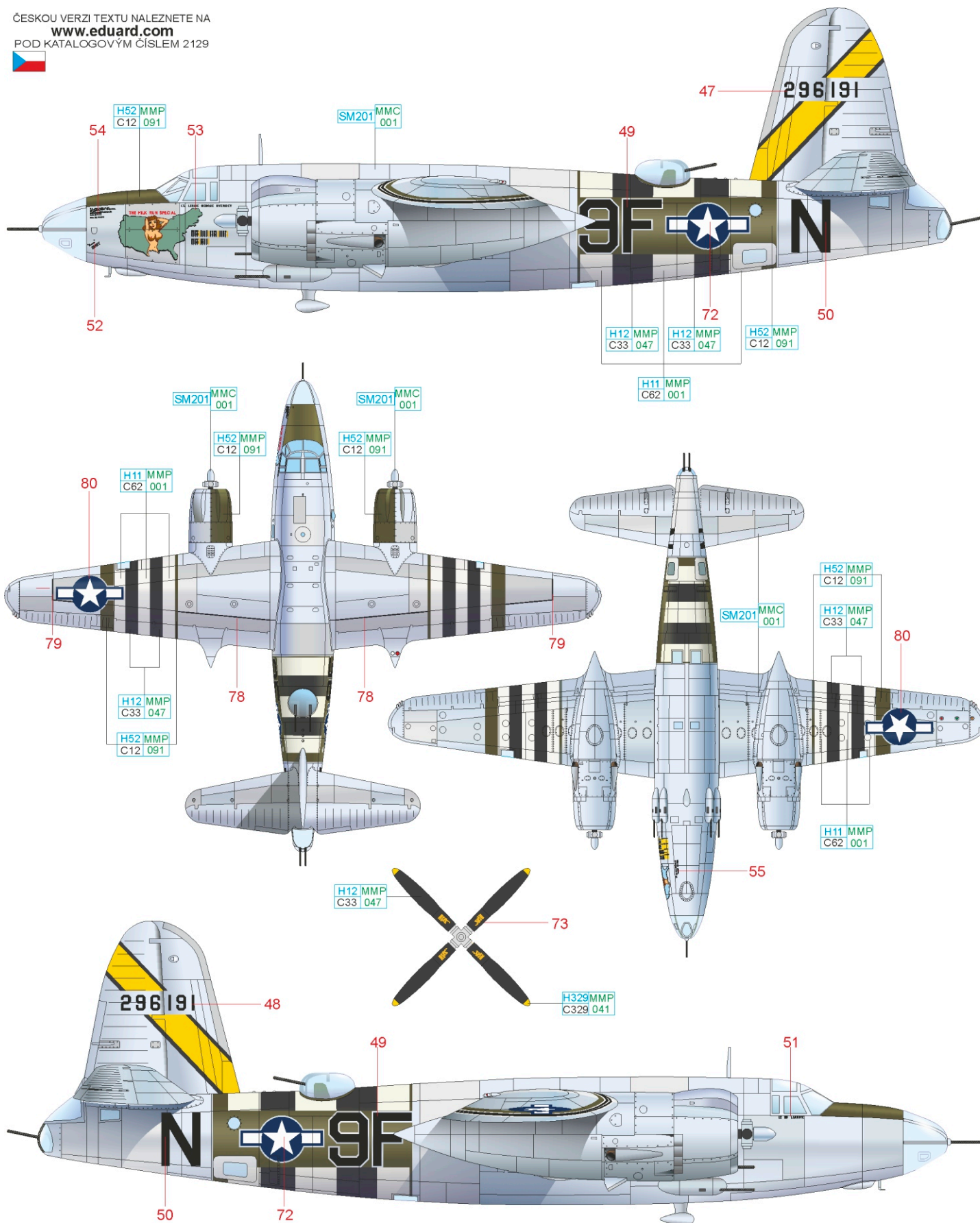


GREEN	H303 MMP C303 066	INTER. GREEN	H58 MMP C351 059
OLIVE DRAB	H52 MMP C12 091	NEUTRAL GRAY	H63 C13
		YELLOW	H329 MMP C329 041
		BLACK	H12 MMP C33 047
		WHITE	H11 MMP C62 001

# H B-26B-55, s/n 42-96191, 597th BS, 397th BG, 9th AF, Rivenhall, United Kingdom, June 1944

The beginnings of the 397th Bombardment Group hails back to April 20th, 1943, at MacDill in Florida, where the unit began to train on the B-26 Marauder. After relocating to Great Britain, the first combat mission was an attack on a V-1 base in the vicinity of Pas de Calais, exactly a year after the formation of the unit. Natural metal aircraft of the 397th BG carried markings that included a yellow diagonal band across the vertical tail surfaces. At the time of the invasion, the so-called D-Day stripes were added to the fuselage and wings. Unit members added a silhouette of the United States on the nose of this aircraft, along with a well endowed lady with the inscription THE MILK RUN SPECIAL. Bomb silhouettes symbolized the number of bombing missions.

ČESKOU VERZI TEXTU NALEZNETE NA  
[www.eduard.com](http://www.eduard.com)  
 POD KATALOGOVÝM ČÍSLEM 2129



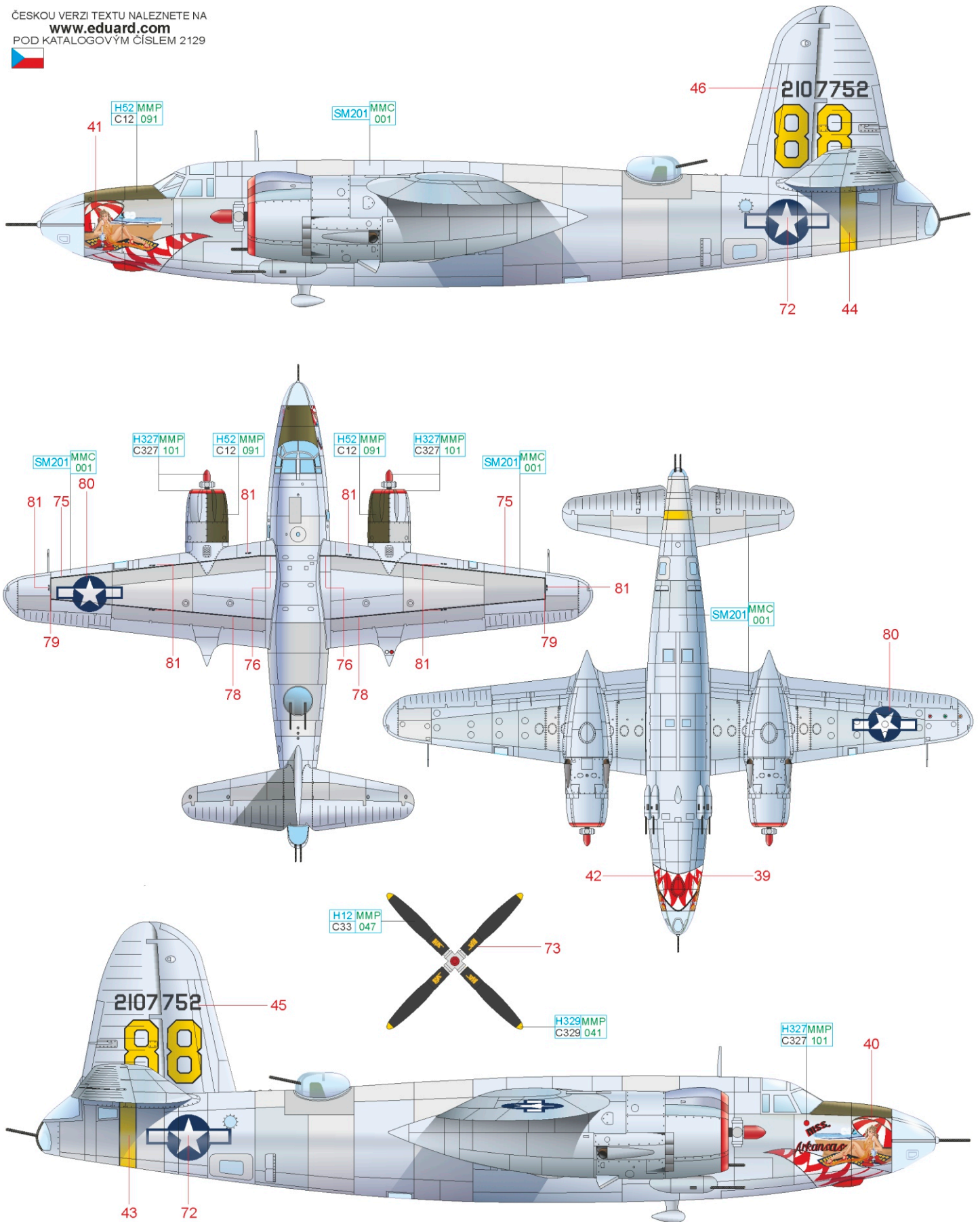
SUPER FINE SILVER	SM201 MMC 001					
OLIVE DRAB	H52 MMP C12 091	YELLOW	H329 MMP C329 041	BLACK	H12 MMP C33 047	WHITE
					H11 MMP C62 001	



# B-26C-45, s/n 42-107752, 444th BS, 320th BG, 12th AF, Decimomannu, Sardinia, August 1944

Another aircraft to be decorated with noseart of a scantily clad woman was this one, named Miss Arkansas, and it carried a sharkmouth to boot. She served with the 444th Bombardment Squadron / 320th BG at the Sardinia base of Decimomannu. From here, the 320th BG conducted raids against targets in central and northern Italy, southern France and southern Germany. By this time, delivered aircraft were no longer in camouflage colours, but rather in natural metal. Only the forward fuselage ahead of the cockpit was in Olive to prevent glare from the reflection of the sun's rays.

ČESKOU VERZI TEXTU NALEZNETE NA  
[www.eduard.com](http://www.eduard.com)  
 POD KATALOGOVÝM ČÍSLEM 2129



OLIVE DRAB H52 MMP C12 091 SUPER FINE SILVER SM201 MMC 001 YELLOW H329 MMP C329 041 BLACK H12 MMP C33 047 RED H327 MMP C327 101

**eduard**