

ASSEMBLY INSTRUCTIONS FOR THE SUPERQUICK RAILWAY HOTEL No. 33

Contents. The kit comprises SHEET 1 and 2, the illustrated "SUPERQUICK" Header Card, a small Accessories Card [A], a long Accessories Card [B], an acrylic Glazing Sheet and this Assembly Instructions Sheet.

Tools. A sharp modelling knife and a steel rule are essential. Tweezers may be useful for the handling of small parts. Bulldog clips, a few rubber bands and 'Sellotape' may be needed to secure parts of the kit while glue is drying.

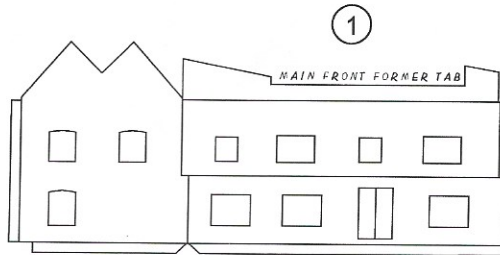
Glues. Most liquid glues are suitable. PVA white glue is particularly recommended as it becomes matt and almost transparent when dry although in cold conditions the glue tends to dry white. For gluing areas of paper, such as lining pieces, it is recommended that PVA is thinned or that a spray or a solvent glue is used.

Card-mounted components. Separate the parts only when called for by nicking with the knife at uncut points. Where the cutter lines are marked with red arrows, they are scored only (i.e. only partly cut through). Here the component is intended only to be bent or folded. Sometimes additional scoring with the knife may be necessary, so that the board bends at the fold line without too much resistance. If the fold line is cut through, a repair can be made by gluing thin paper or gummed tape to the back.

Waste. Waste card is indicated by the symbol 

Windows. The Glazing Sheet is divided into 27 window pieces divided by dotted lines. The recommended method of glazing is as follows. Lay down the window piece, face up. Apply PVA sparingly to the back of the wall around the window opening and the lower wall onto the window piece. Correct the alignment before the glue sets and wipe excess glue from the window surface with a damp paintbrush. This method permits adjustment, is longer lasting and is easier for fixing small window pieces. The alternative method is to apply narrow strips of "Sellotape" along two sides of the unprinted back of the window piece. Lay the window piece down as before and lower the wall onto the partly exposed sticky tape. When the window is attached to the wall, rub down the tape and apply further strips to the remaining two sides of the window piece.

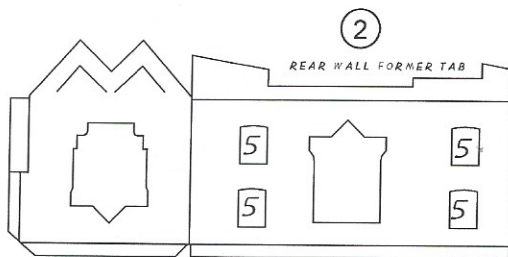
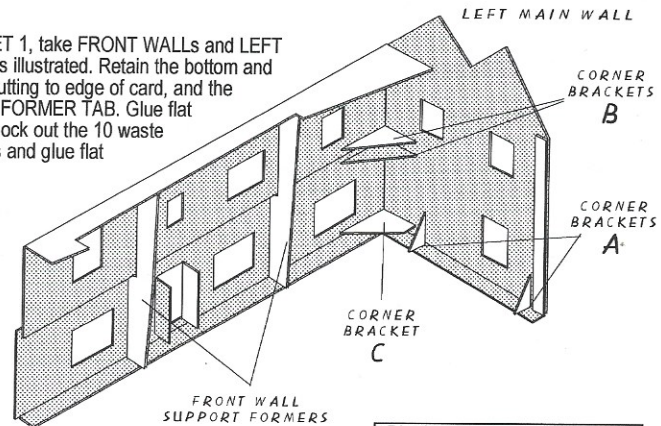
Finishing. The appearance of the completed model will be greatly improved if all exposed edges are touched up with paint. It is important that there is no glue on exposed edges.



(ii) Take numbered glazing pieces from window sheet and fix. Take numbered WINDOW BACKING PIECES from ACCESSORIES CARD [A] and mount behind glazing.

(iii) Fold the two bottom tabs and the MAIN FRONT FORMER TAB. Glue in place the corner brackets *A* from SHEET 1 as illustrated. Glue edge of MAIN FRONT FORMER TAB to Left Main Wall. Glue in place two corner brackets *B* to secure the top front wall then the bottom front wall. Glue in place bracket *C* from SHEET 1 as illustrated. When walls are set square, fix the FRONT WALL SUPPORT FORMERS to rear of front wall between window apertures as illustrated.

(i) From SHEET 1, take FRONT WALLS and LEFT MAIN WALL as illustrated. Retain the bottom and left TABS by cutting to edge of card, and the MAIN FRONT FORMER TAB. Glue flat the left tab. Knock out the 10 waste window panels and glue flat end tab.

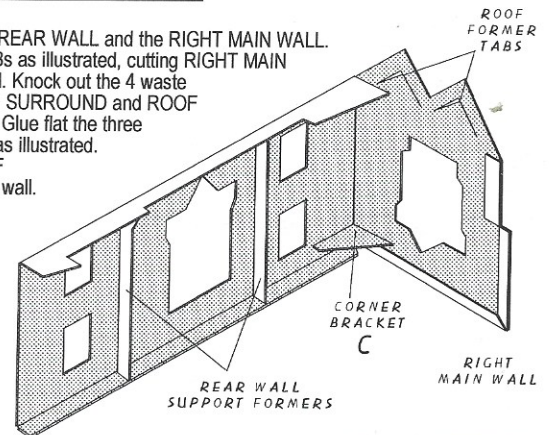


(iii) Fold REAR WALL FORMER TAB and RIGHT MAIN WALL and glue together as illustrated. From SHEET 1 take CORNER BRACKET *C* and glue in place as illustrated.

(iv) Fold bottom tab and glue in place both REAR WALL SUPPORT FORMERS from SHEETS 1 and 2 as illustrated.

(i) From SHEET 1 take the REAR WALL and the RIGHT MAIN WALL. Retain bottom and side TABS as illustrated, cutting RIGHT MAIN WALL TABS to edge of card. Knock out the 4 waste window panels, the PORCH SURROUND and ROOF and the ROOF DORMERS. Glue flat the three RIGHT MAIN WALL TABS as illustrated. Bend forward the two ROOF FORMER TABS on the end wall. Be careful not to damage the wall.

(ii) Take number 5 glazing pieces from window sheet and fix into position. Take numbered window backing pieces from ACCESSORIES CARD [A] and line windows

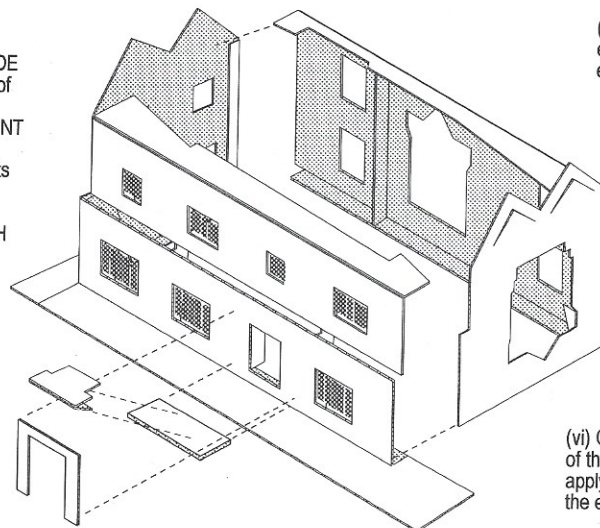


(i) From SHEET 2 take FRONT and SIDE PAVEMENT pieces. Insert back edge of FRONT PAVEMENT in groove along bottom of front wall and SIDE PAVEMENT in groove along bottom of left end wall. Check position and glue both pavements pieces in place

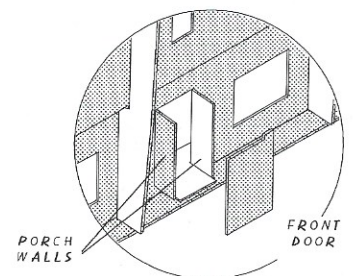
(ii) From SHEET 1 take FRONT PORCH STEP; glue tab and position centrally in front of doorway.

(iii) Take PORCH FLOOR; glue tab flat. Positioning floor area inside entrance between opened wall pieces, glue to FRONT STEP and against FRONT WALL.

(iv) Take PORCH SURROUND from SHEET 1 and position centrally around doorway wall.



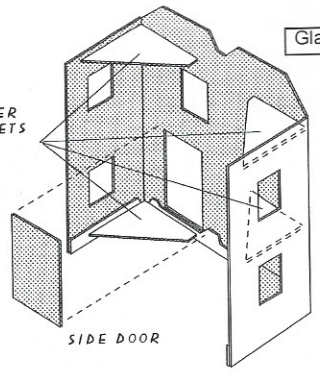
(v) From SHEET 1 glue FRONT DOOR to back edges of porch walls and positioned on floor edge overlap as illustrated.



(vi) Glue REAR WALLS section to the back edges of the FRONT WALLS section as illustrated, applying glue to the edges of the side walls and to the end edges of the top former tabs.

4

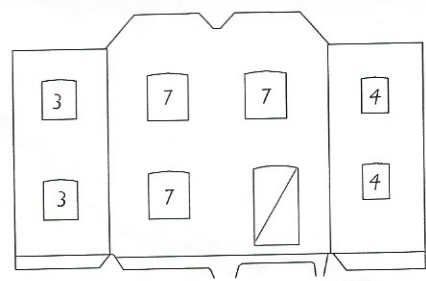
CORNER BRACKETS F



Glazing Pieces not illustrated

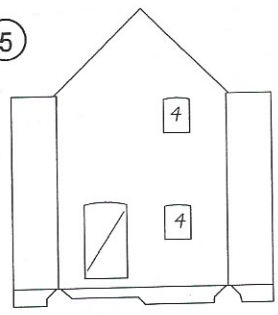
(i) From SHEET 2 take the SIDE EXTENSION WALL. Retain tabs as illustrated, cutting to edge of card where instructed. Knock out the 5 waste window panels and waste door piece with the corner bracket. Fold and glue flat the three BOTTOM TABS as illustrated. Glaze the windows and apply the appropriate WINDOW BACKING PIECES from ACCESSORIES CARD [A]. From SHEET 1 glue the SIDE DOOR into position.

(ii) Fold side walls in and glue CORNER BRACKETS F from SHEET 1.



Glazing Pieces not illustrated

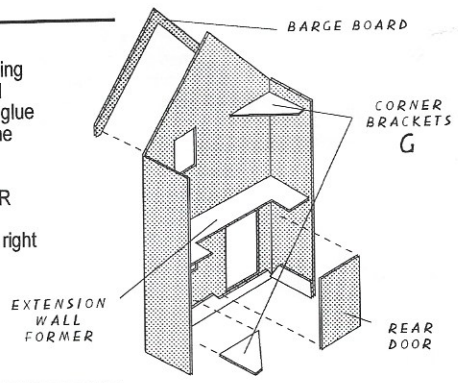
5



(i) From SHEET 2 take the BACK EXTENSION WALL, retaining tabs as illustrated. Knock out the 2 waste window panels and waste door piece with the CORNER BRACKET C. Fold and glue flat the three BOTTOM TABS as illustrated. Glaze and line the windows and glue the REAR DOOR into position as before.

(ii) Fold side walls, take RIGHT EXTENSION WALL FORMER from SHEET 2 and glue in position above rear door. Take CORNER BRACKETS G from SHEET 2 and glue to the top right and bottom left of inside walls as illustrated.

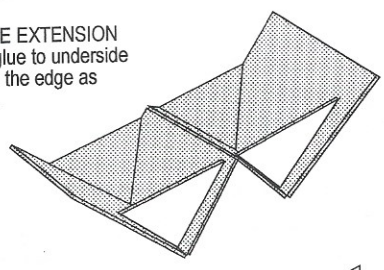
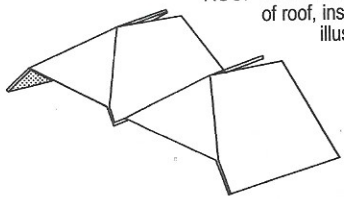
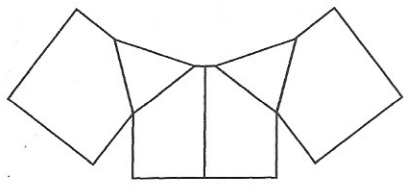
(iii) From SHEET 2 take BARGE BOARD and glue flush with top of wall.



6

(i) From SHEET 2 take SIDE EXTENSION ROOF. Fold along score lines as illustrated.

(ii) From SHEET 2 take SIDE EXTENSION ROOF FORMERS and glue to underside of roof, inset from the edge as illustrated.

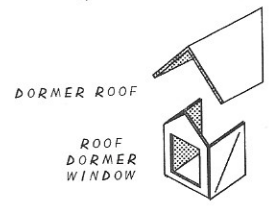
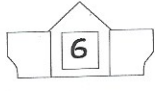


7

(i) From SHEET 2 take MAIN ROOF and knock out the waste panels.

(ii) From SHEET 1 take ROOF DORMER WINDOW pieces. Knock out waste window panel then glaze and line window using glazing and lining pieces no. 6. Fold sides and glue into position in the dormer apertures in the main roof.

(iii) From SHEET 2 take four ATTIC DORMER ROOFS and glue to ROOF DORMER WINDOWS.



Glazing Pieces not illustrated

8

(i) From SHEET 2 take FRONT WALL CAPPING and glue to front wall as illustrated.

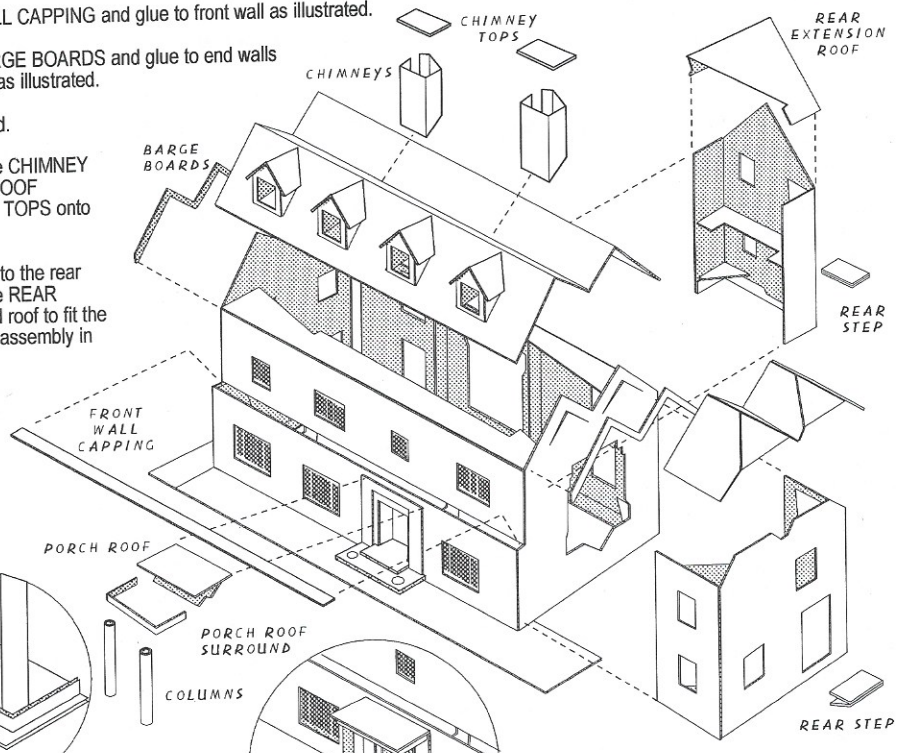
(ii) From SHEET 1 take the two BARGE BOARDS and glue to end walls so as to be flush along the top edge as illustrated.

(iii) Glue MAIN ROOF into place as illustrated.

(iv) From ACCESSORIES CARD [B] take the CHIMNEY STACKS and glue in position on the MAIN ROOF as illustrated. From SHEET 2 glue CHIMNEY TOPS onto stacks making sure they are square.

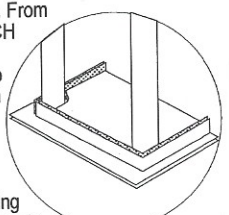
(v) Position the REAR EXTENSION (step 5) to the rear of the main building. From SHEET 1 take the REAR EXTENSION ROOF. Align the extension and roof to fit the former tab on the MAIN ROOF and glue the assembly in place.

(vi) Position the SIDE EXTENSION (step 4) and SIDE EXTENSION ROOF (step 6) together over the ROOF FORMER TABS on the right main wall. Glue the assembly into position as illustrated.

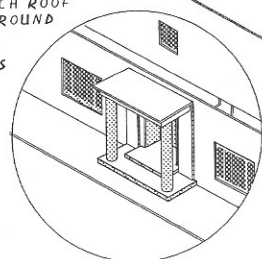


9

(i) From SHEET 2 take the PORCH ROOF; fold TAB flat. From SHEET 1 take PORCH ROOF SURROUND; glue around porch roof tab so that ends are flush with fold.



(ii) From ACCESSORIES CARD [B] take the two PORCH COLUMNS; starting with the tab roll each column to a desired thickness and glue along the length. Take the PORCH ROOF assembly and glue columns into the spaces inside corners of the porch roof surround.



10

Fold and glue flat the REAR STEPS and glue into position in doorways as illustrated.