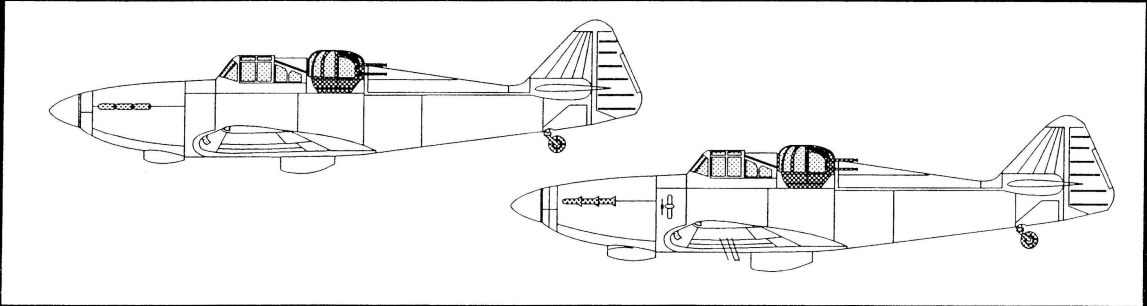




# Classic Airframes



## Boulton-Paul Defiant Mk.I/II

Unlike its single-seat fighter contemporaries the Spitfire and Hurricane, the Boulton-Paul Defiant was designed to accommodate a second crew member in a powered turret; this was expected to provide an unprecedented level of flexibility for directing firepower at enemy aircraft. First flown in August 1937, the Defiant Mk.I reached squadron service in December 1939, with 264 Squadron being tasked with developing tactics for the new aircraft. Although considered a pleasant aircraft to fly, the additional weight of the turret and second crewman contributed to the Defiant being some 20 mph slower than the Hurricane, 40 mph slower than the Spitfire, and most telling, 50 mph slower than the nimble Bf109E. Initial combat experiences proved to be encouraging against the slower German bombers, with mixed success against Bf109s. However, once the German airmen were aware of the limitations of the the Defiant, daylight operations proved to be disastrous, and all Defiants were eventually withdrawn by late August 1940. During this time, work proceeded on the more powerful Mk.II, which was equipped with AI Mk.6 radar for night-fighting duties. Once again, results were mixed, and with the arrival of night-fighting Beaufighters, the Defiant night fighters were withdrawn by mid-1943. In early 1942, the Defiant was employed as an air-sea rescue aircraft, serving with some success until June of 1943. The longest role Defiants served in was as target-tug aircraft, Boulton-Paul having been requested to develop and produce a TT version in 1941. Both Mk.I and Mk.II airframes were modified to TT standards, including a number of Mk.IIs that had previously operated as night fighters. Defiant target tugs provided widespread and extremely useful service for the RAF, Fleet Air Arm, and the USAAF in the UK, Far East and Middle East.

### Defiant Mk.I Specifications (Mk. II in parentheses)

Powerplant:	Rolls-Royce Merlin III (R/R Merlin X)	Armament:	4x .303 Browning machine guns in turret
Wing Span:	39' 4"		
Length:	35' 4" (35' 8")		
Maximum Speed:	304 mph (313 mph)		

This model kit is intended for *experienced* modelers. The nature of low-pressure molded kits such as this require additional time and effort to clean up and fit the parts, as well as experience with the various media utilized to provide the most accurate effect on the finished model. Use CyA ('super') glue to assemble Resin parts.

# Assembly Instruction Symbols



MULTIPLE ASSEMBLIES



BEND



OPTIONAL



DRILL



CUT



SYMMETRICAL ASSEMBLIES

## Paint Reference Guide



Interior Grey-Green FS 34226



Buff Linen



Aluminum



Flat Black-grey



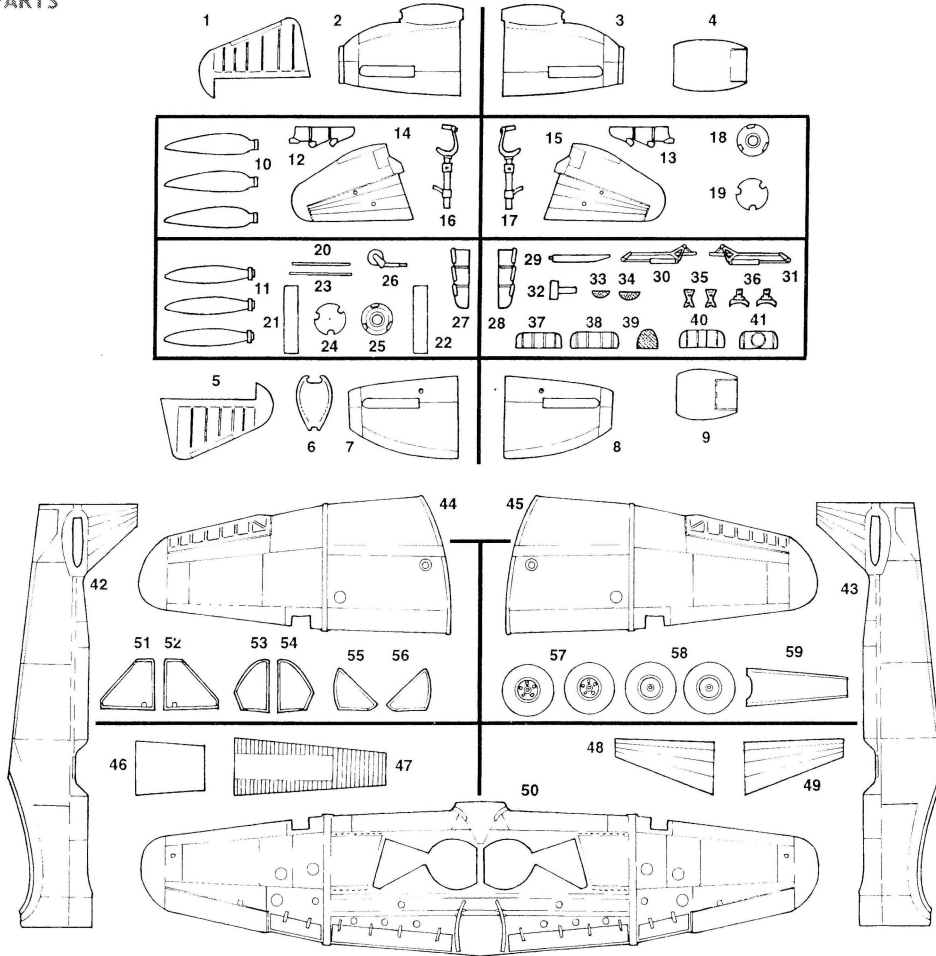
Burnt Metal



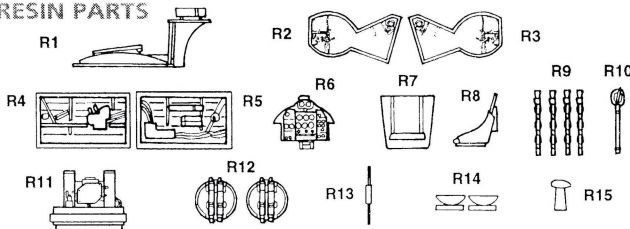
Gunmetal

## Parts

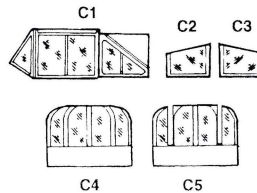
### PLASTIC PARTS



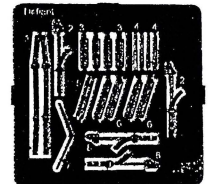
### RESIN PARTS



### CLEAR PARTS



### PHOTOETCHED PARTS



**1** R6 *Pre-paint interior parts*

R5  
Instrument panel is Flat Black-grey with Silver and White details

R4  
Side panels are Interior Green with Black and Silver details

**2**

PE1  
PE2  
R8  
PE2

**3**

R5  
R10  
R1  
R4

*Be sure to dry-fit and check alignment of all parts during assembly.*

**4**

C5  
C4  
R12  
R9  
R11  
R12  
PE3  
R7  
PE3

*Turret interior*

**5**

42  
26  
47  
43  
46  
R6

*Be sure to dry-fit and check alignment of all parts during assembly.*

**6**

**?**

1 (Mk.I) 5 (Mk.II)

14  
59  
49  
C1  
15  
48  
12mm / -1/2"

*Make part from plastic rod or stretched sprue, 6mm / -1/4" long.*

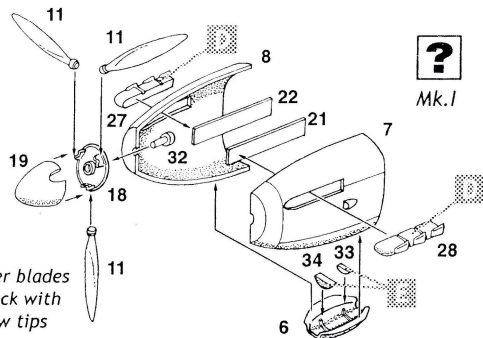
*Be sure to dry-fit and check alignment of all parts during assembly.*

**7**

*Be sure to dry-fit and check alignment of all parts during assembly.*

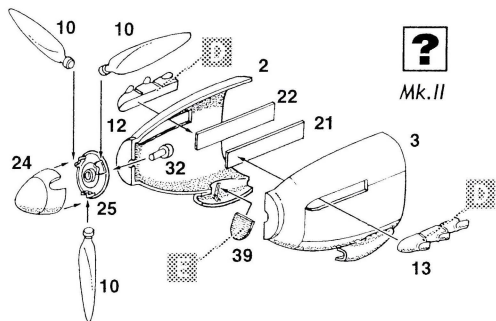
*Make part from scrap plastic*

44  
50  
R2  
R3  
45  
PE3  
PE4  
R15  
PE5  
PE3  
PE4  
9mm -3/8" 5mm -3/16"  
3mm -1/8"  
R14  
PE6  
R13  
C3  
R14  
PE6  
PE5  
C2  
.8mm / -1/32" 17mm / -11/16"

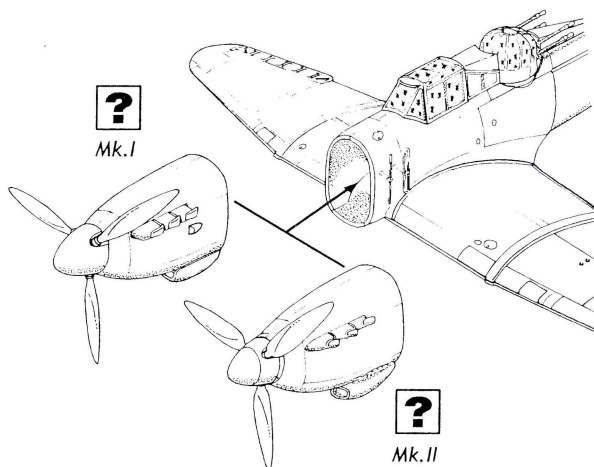
**8****?**

Mk.I

Propeller blades  
are Black with  
Yellow tips

**?**

Mk.II

**9****?**

Mk.I

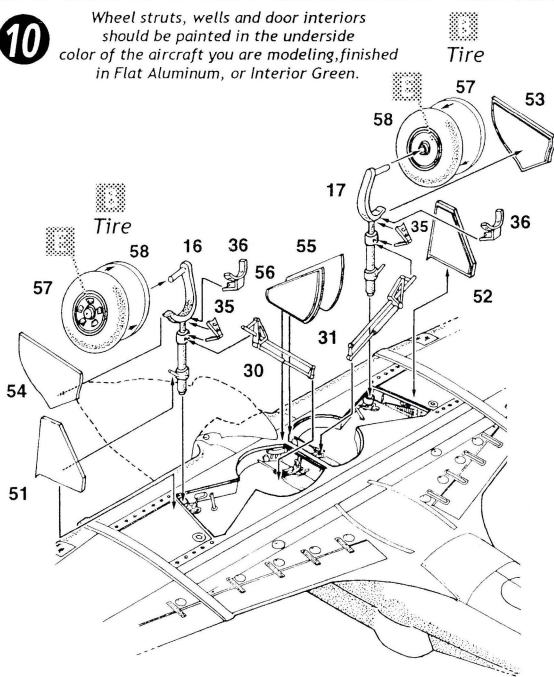
**?**

Mk.II

**10**

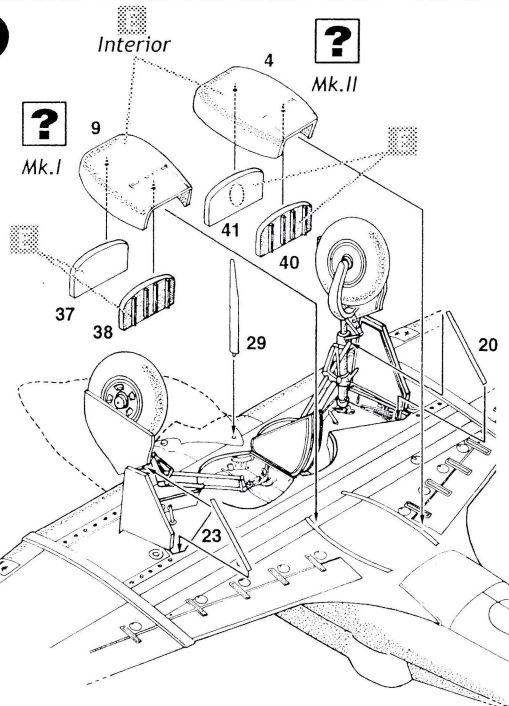
Wheel struts, wells and door interiors  
should be painted in the underside  
color of the aircraft you are modeling,  
finished in Flat Aluminum, or Interior Green.

Tire



Tire

Tire

**11****?**

Mk.II

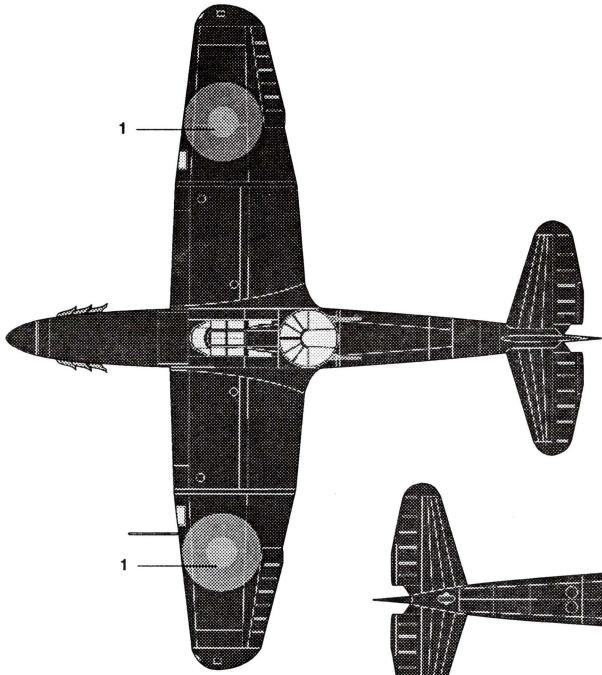
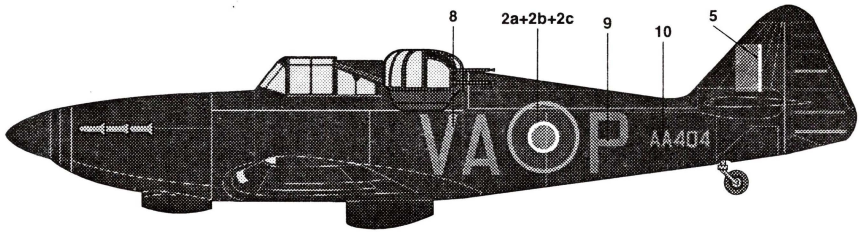
**?**

Mk.I

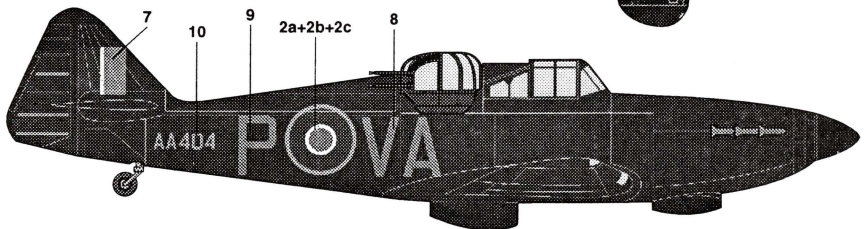
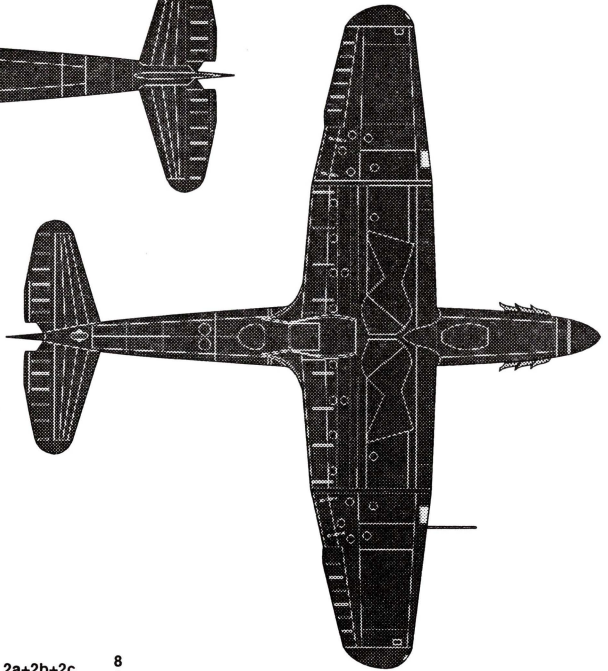
Interior

# Defiant Mk.II *PAINTING & MARKING GUIDE*

125 Squadron, Colerne, 1942

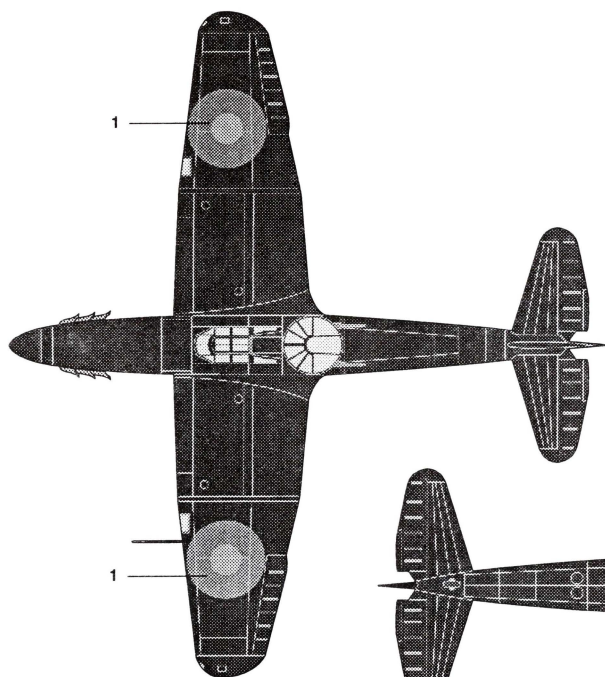
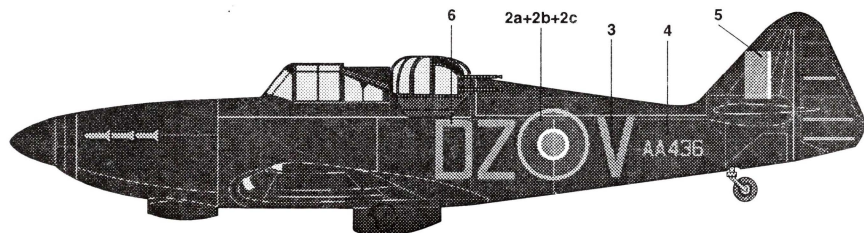


  
RAF Night  
(Black)

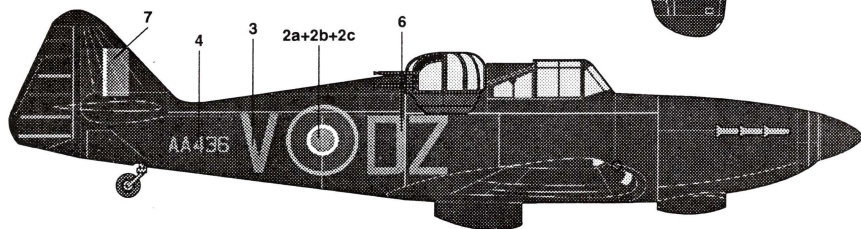


# Defiant Mk.II *PAINTING & MARKING GUIDE*

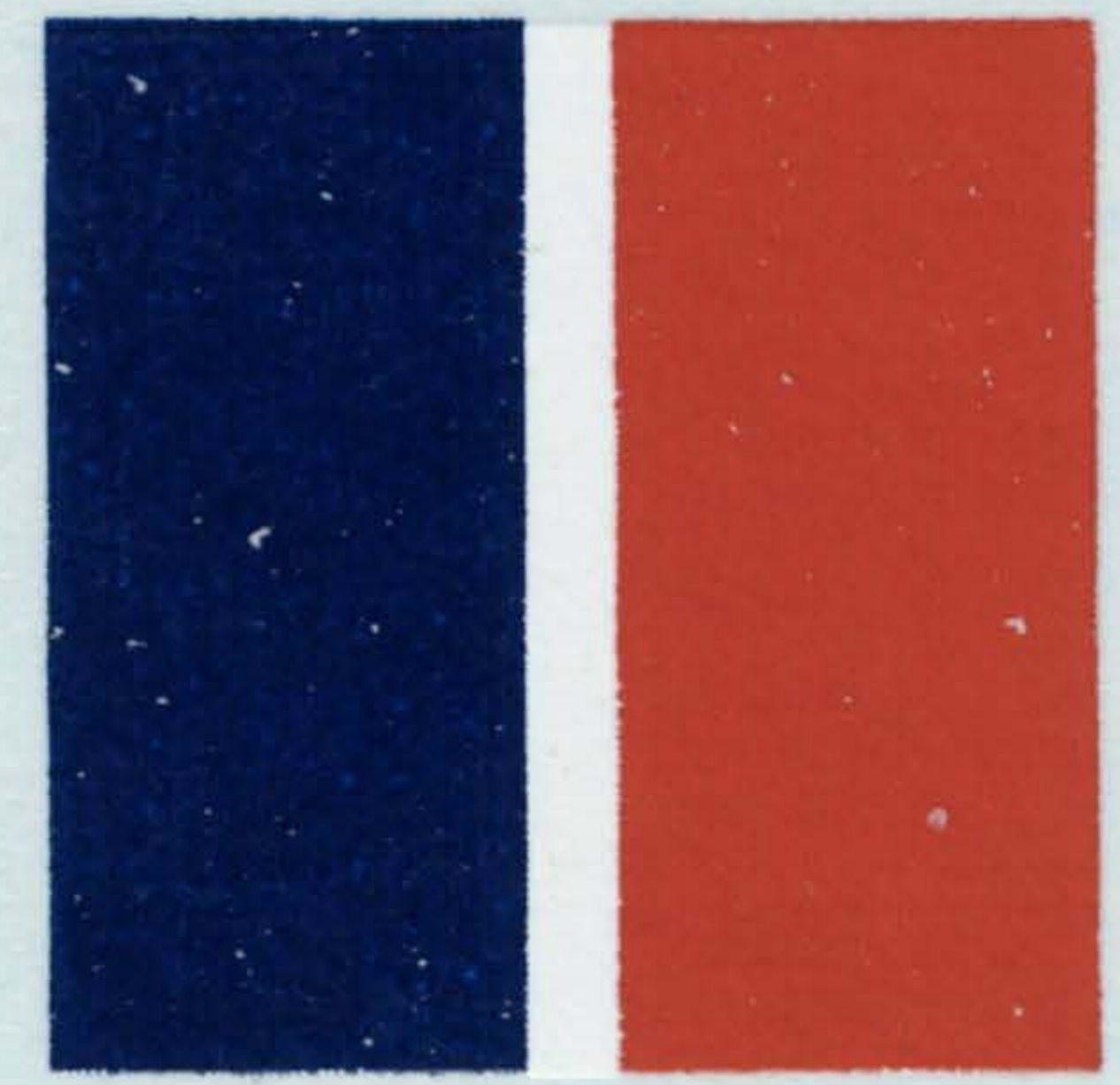
151 Squadron, 1941



■  
RAF Night  
(Black)



5



DZ

6

V

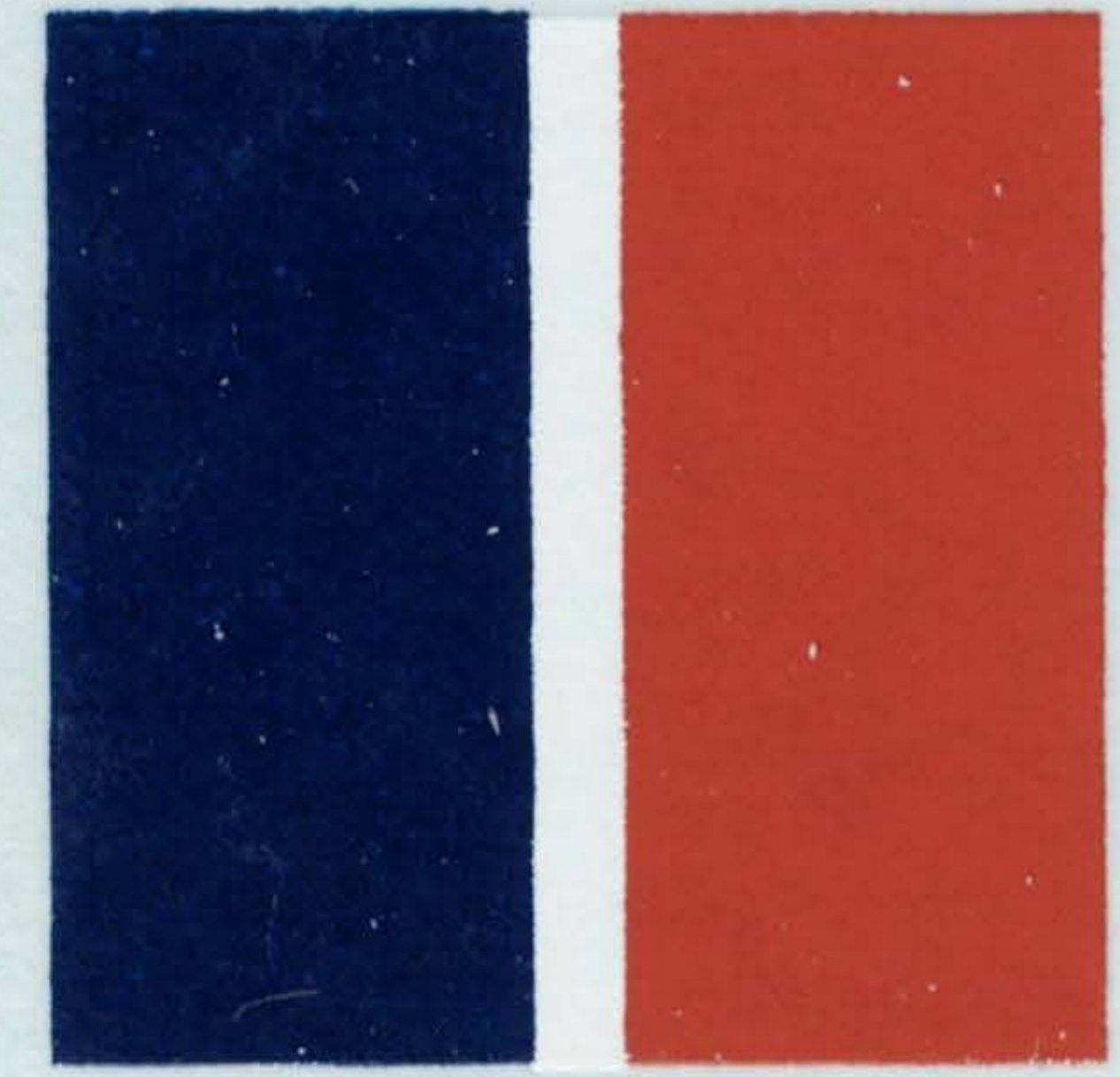
3

8

VAP

9

7



Kit#481

custom printed by  
MICROSCALE

OIL X'W 10 GAL L  
AIR 2 GALLON

E

AA436

4

AA436

DZ

6

V

3

8

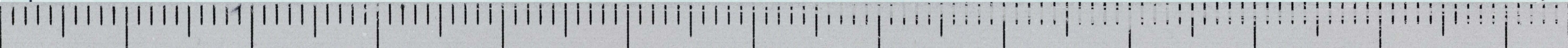
VAP

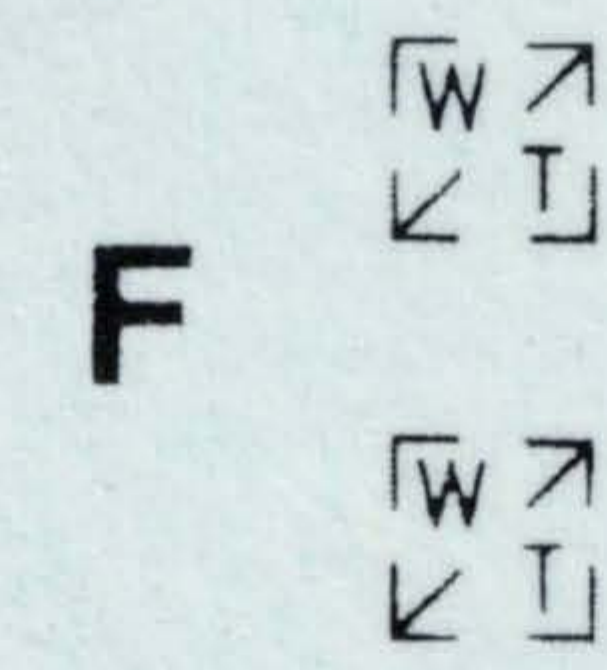
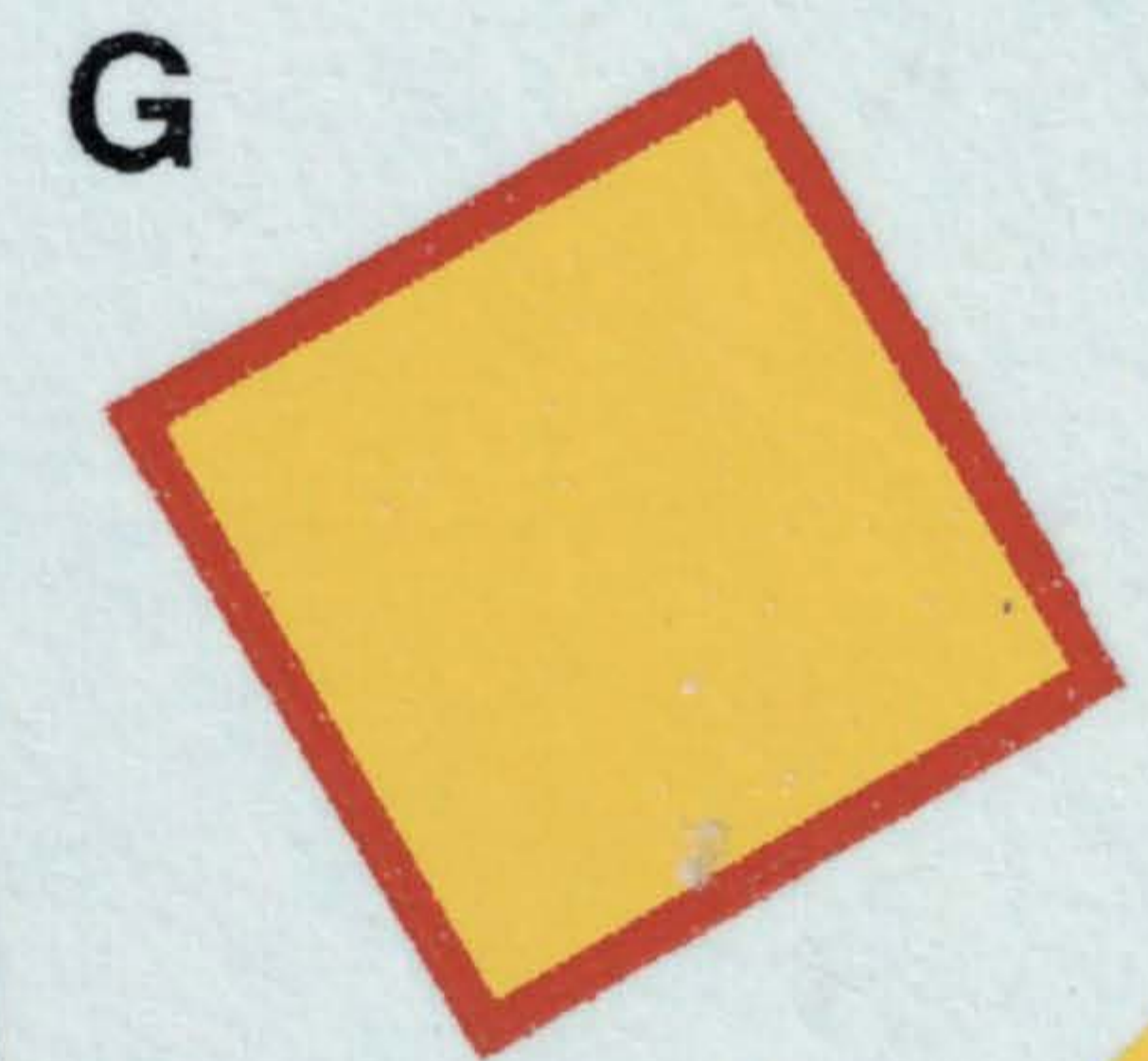
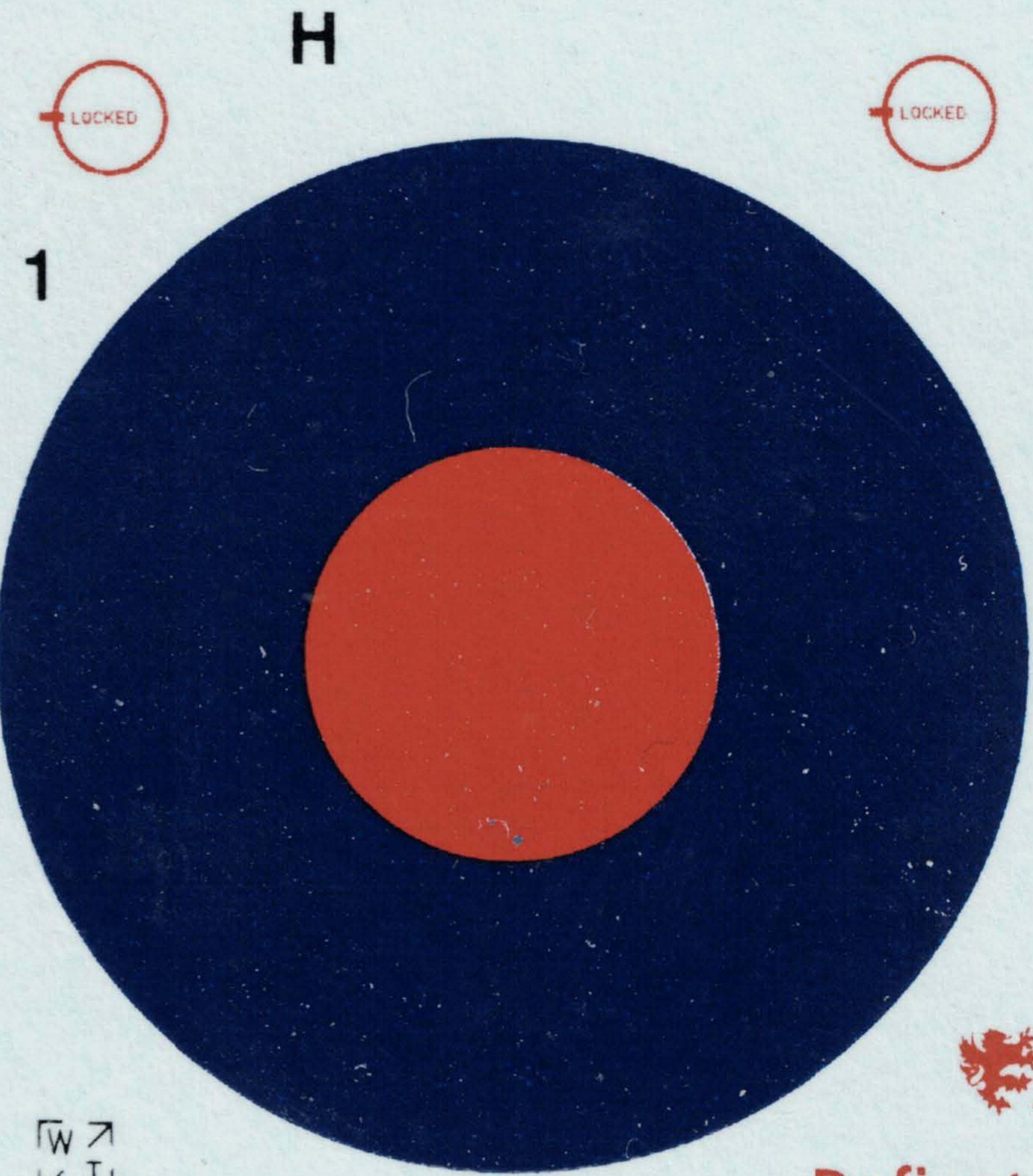
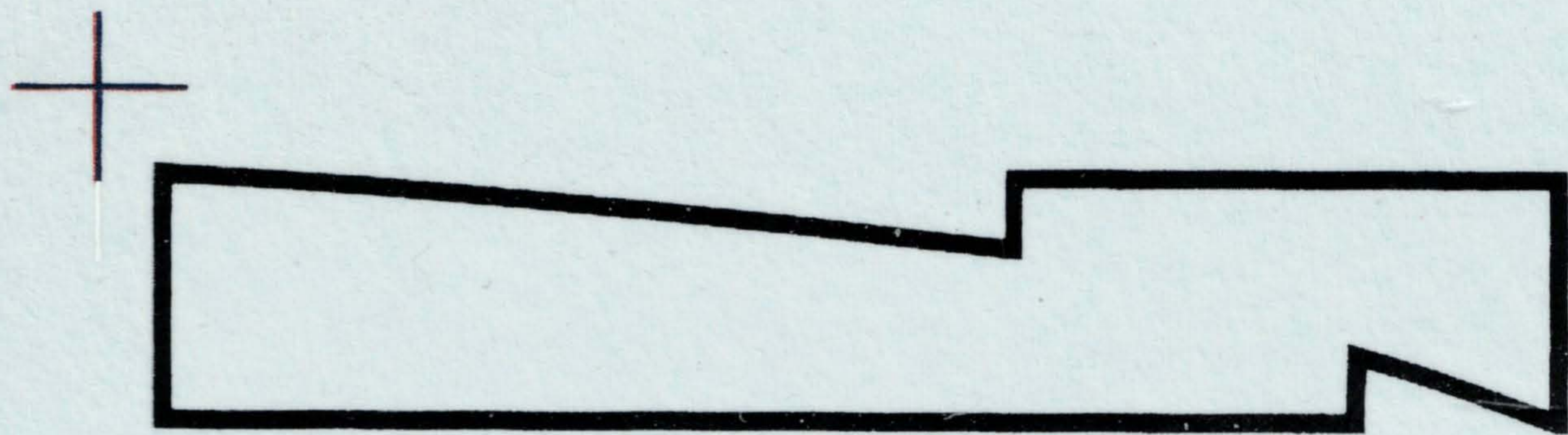
9

AA404

10

AA404



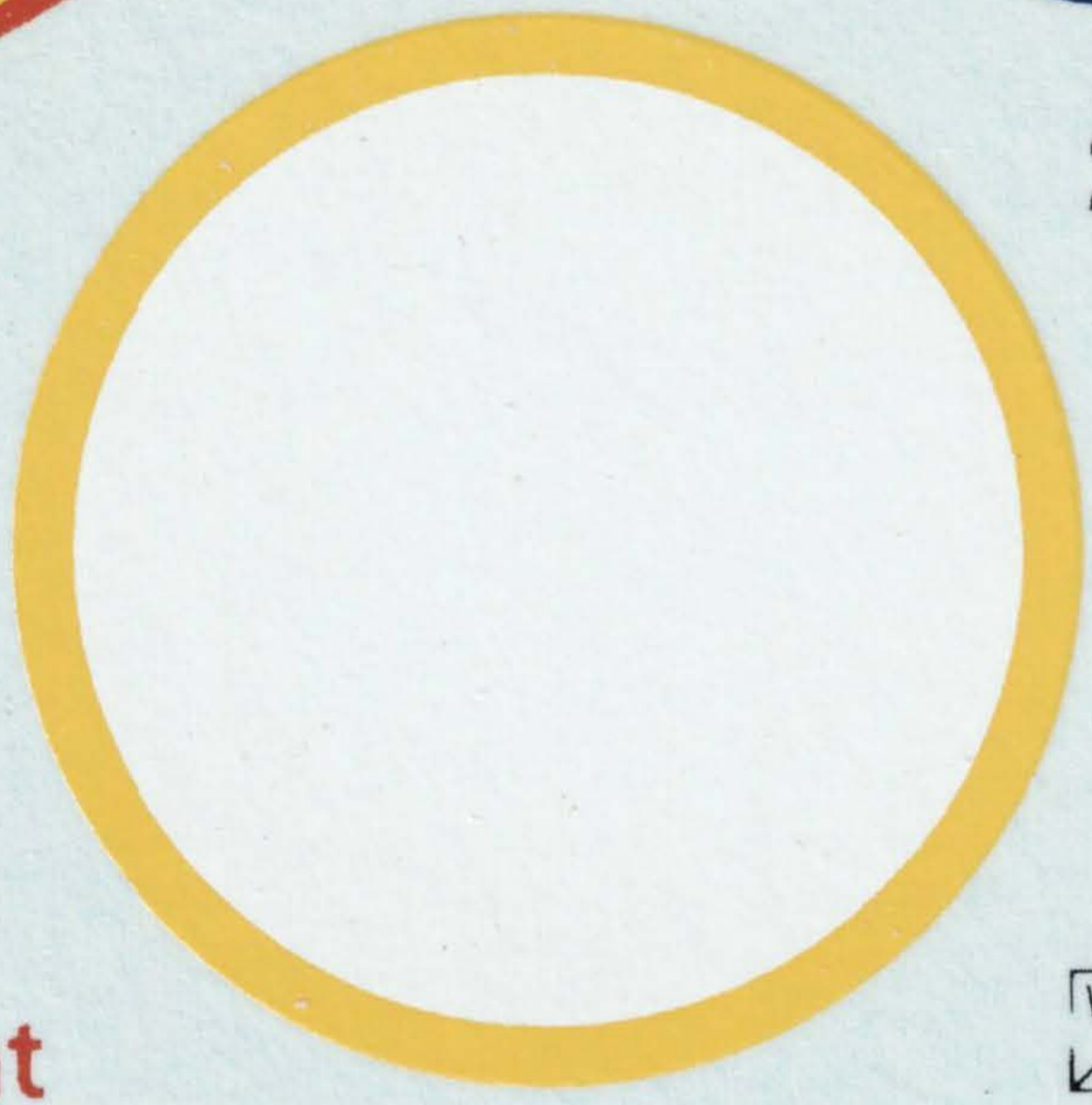


  
**Defiant Supplement**

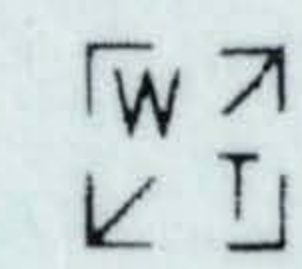
**A** FIRST AID & AXE ACCESS HATCH



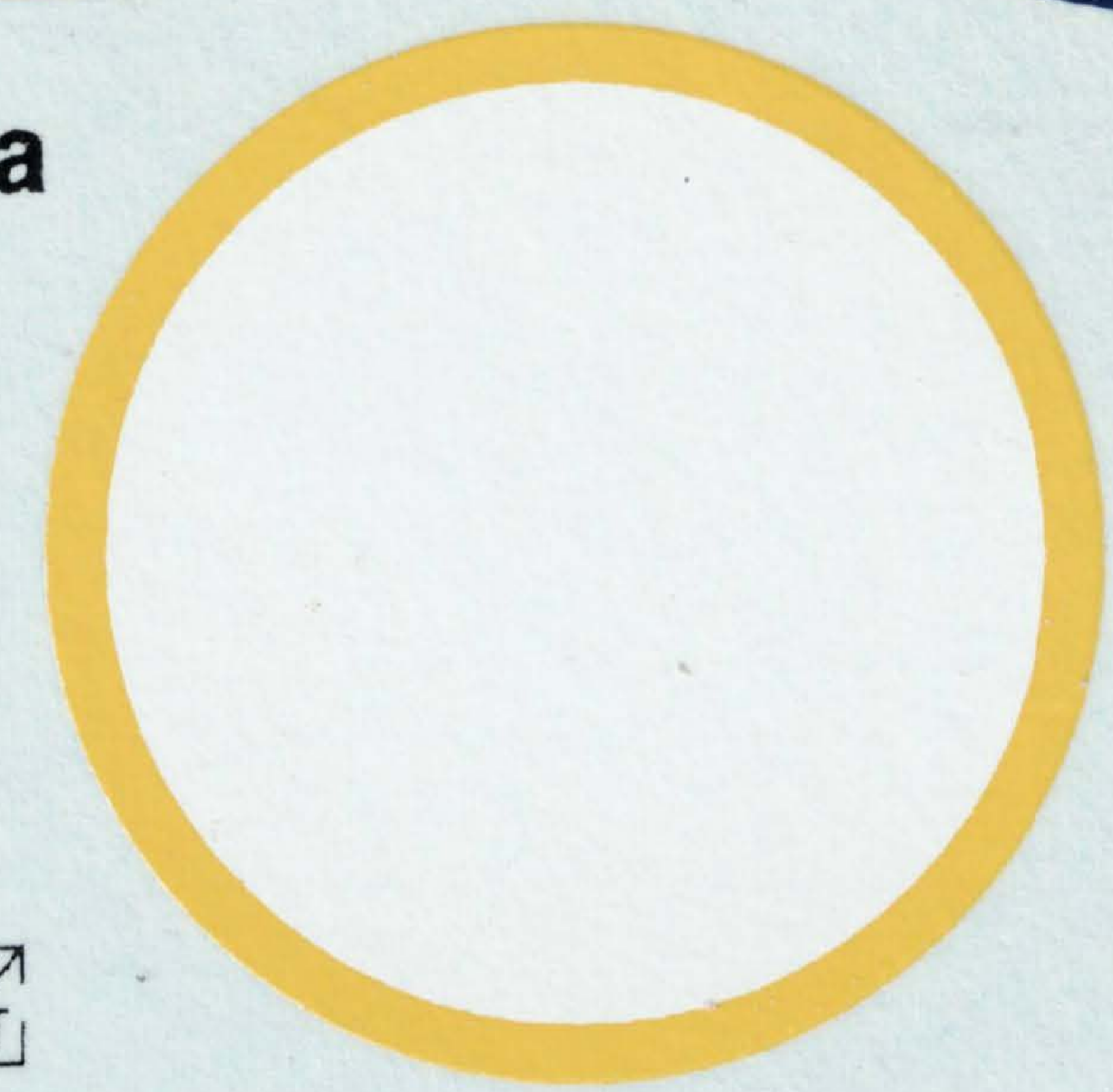
**K**



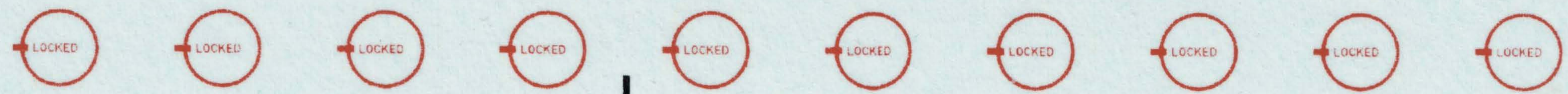
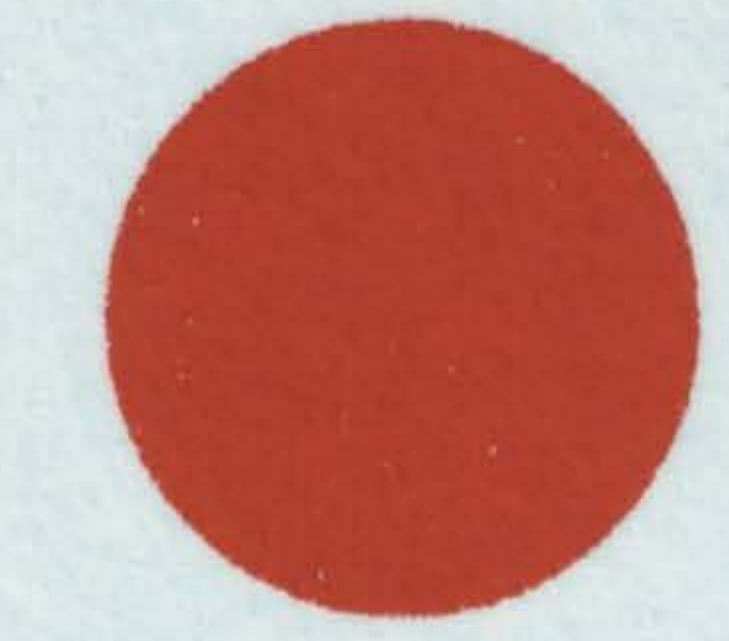
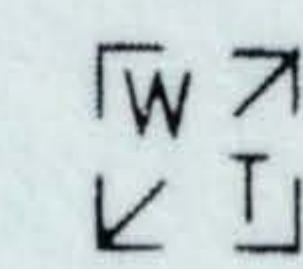
**2a**



**2b**



**2c**



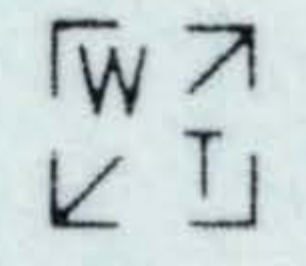
MOORING RING **J** MOORING RING

**I**

FUEL 100 ONLY FUEL 100 ONLY FUEL 100 ONLY FUEL 100 ONLY



COOLANT **D**



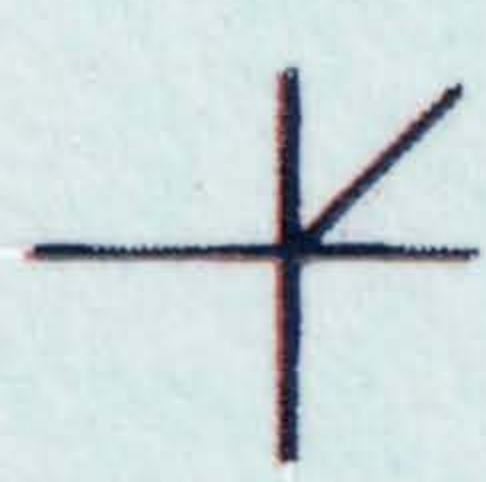
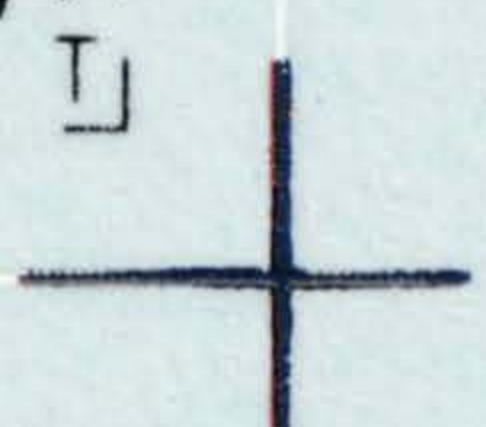
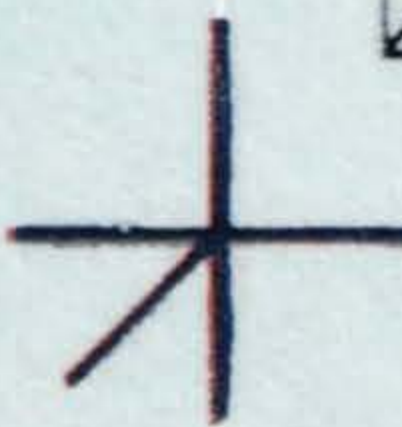
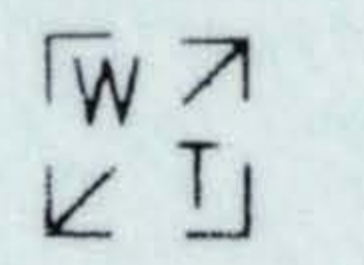
**C**

**B**

FUEL 100 ONLY FUEL 100 ONLY

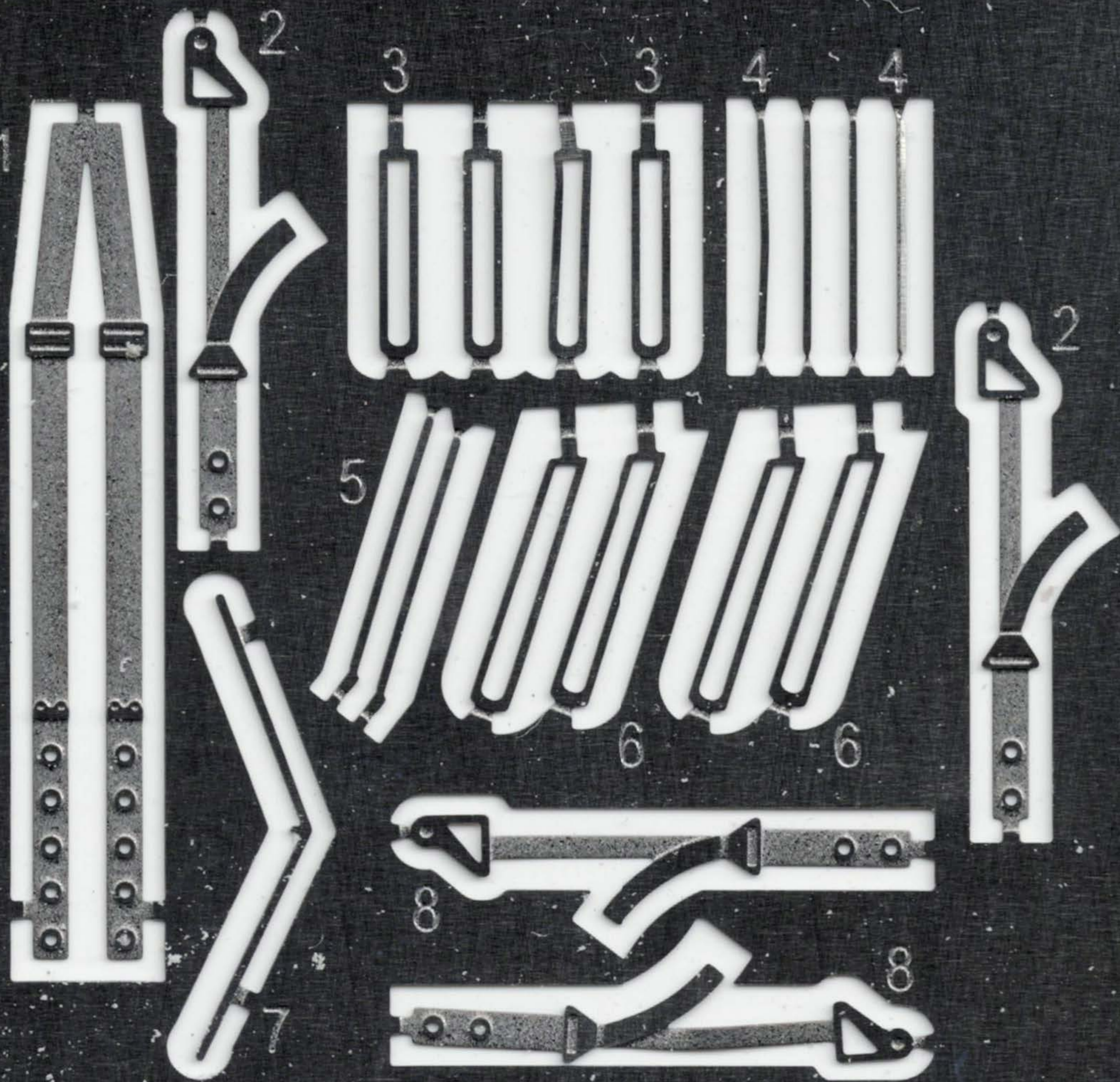


**1**





# Defiant Mk.II Classic Airframes



© EDUARD 2004

Made in Czech Republic