

STAR WARS
RETURN OF THE JEDI

TIE Interceptor™

TM & © Lucasfilm Ltd. (LFL) 1983 All Rights Reserved.
Fundimensions, Division of CPG Products Corp., Authorized user.



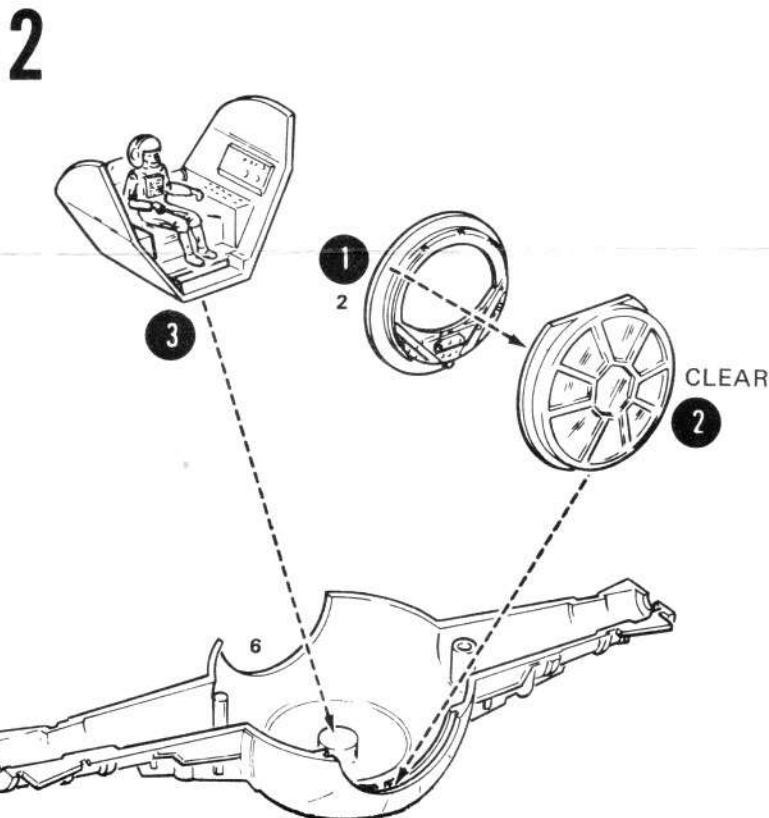
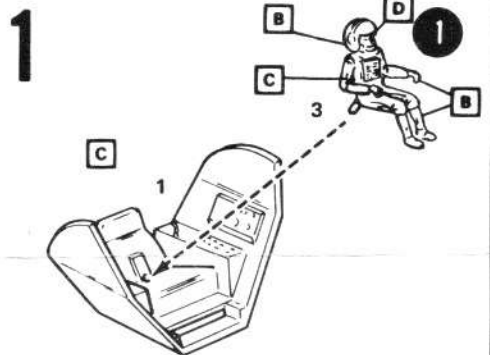
78-1972-250

- 5** ————— STEP NUMBERS
- 32** ————— PLASTIC PART NUMBERS
- OPTIONAL
- 2X** ————— REPEAT SEVERAL TIMES
- REMOVE
- ★** ————— REFER TO ...
- DECAL

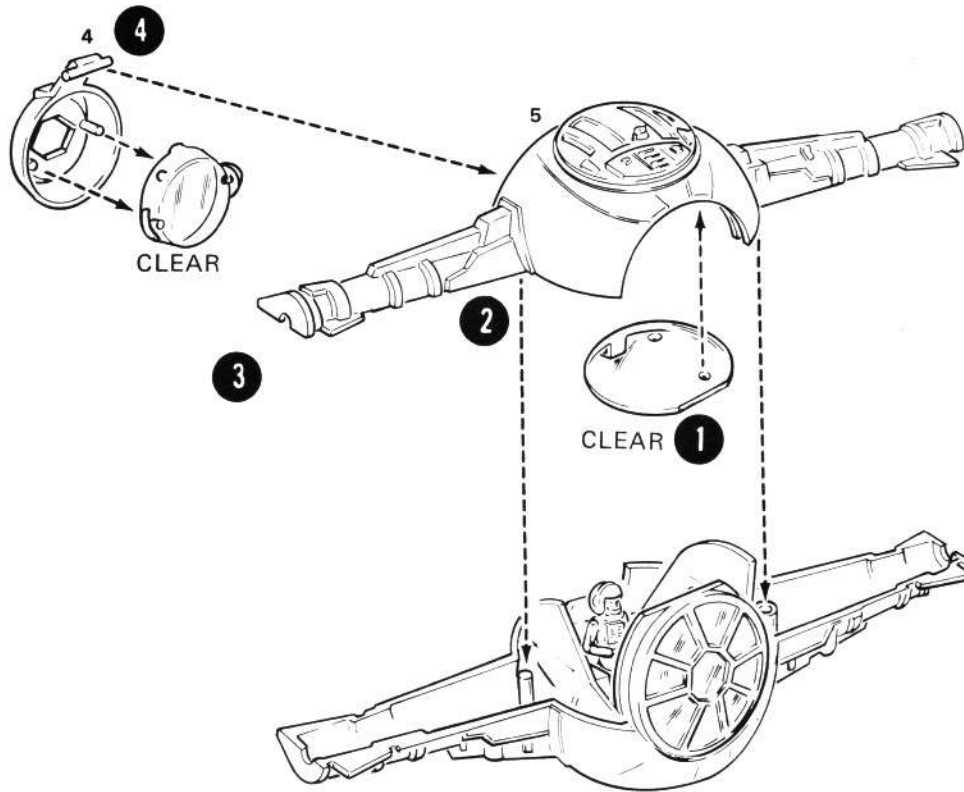
- Study assembly drawings carefully before starting.
- Each part is identified by a part number (14).
- Allow paint to dry thoroughly before handling.
- Refer to last page for decal and painting instructions.
- ★ Refer to other assembly drawing for location.
- Your model may be painted to match the box photos.
- Follow the step numbers **5** in each assembly-drawing.



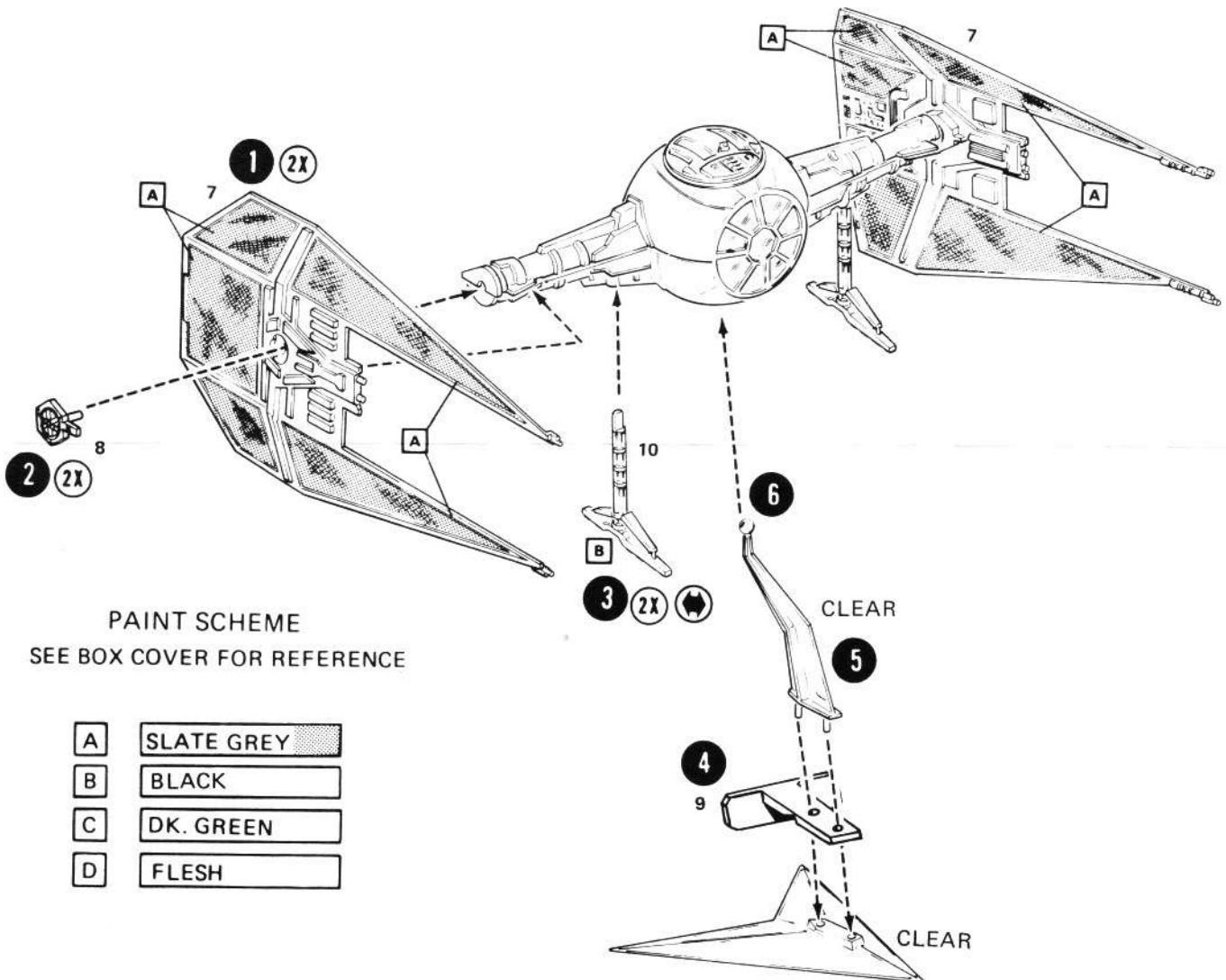
1983 Fundimensions, Division of CPG Products Corp.



3



4



PAINT SCHEME
SEE BOX COVER FOR REFERENCE

A	SLATE GREY
B	BLACK
C	DK. GREEN
D	FLESH