



Büssing NAG 4500 A-1

with Bilstein 3t Drehkran



****SPECIAL THANKS:** Mr. Holger Eedmann
Mr. Joachim Reinecke
Mr. Thomas Hartwing

In mid-1930s, to lessen logistics burden, the German Army tried to standardize the chassis for track. Three levels-light, medium, and heavy, chassis were standardized so that motor manufacturers can utilize their own engines and gearboxes on said standardized chassis. Five major standardized chassis were completed.

Established in 1903, Büssing-NAG mainly produced buses and trucks in Germany. Expropriated by the government in 1933, the company was made dedicated to produce over 4.5-ton military trucks. The lightest ones among this series, 500A (4-wheel drive) and 500S (2-wheel drive), both utilized 150 HP 6-cylinder diesel engines. Produced from 1938 to 1941, German Army standardized chassis and driver compartment were adopted. Derivative models, 4500A and 4500S were introduced in 1942. Based on identical specification to 500A/S, 4500A/S might have slight differentials in appearance. To fulfill various combat needs, there were further specialized modifications based on 4500A/S chassis. There were several simplified models on later stage in the war to save up material and production procedure.

In order to enhance field repair ability for German mechanized units. Wehrmacht chose Büssing-NAG 4500A and 500A as carriers, installed a crane designed by Bilstein company that its capacity could lift a load of 3 ton. This crane was capable of full direction traverse and it could balance out up to 15° of sloping terrain. The crane could be operated at a 3 ton or a 2 ton capacity. The jib can be extended to 3.85m when the crane was operated at a 3 ton capacity and 4.85m when the crane was operated at a 2 ton capacity. This feature could be used on lifting engines and changing tank gun barrels. Towing equipment on the cargo bed could be used to tow wheeled vehicles. After November, 1943, these Büssing-NAG with 3 ton crane installed were designated Kfz.100. Most of Kfz.100 were issued to maintenance battalions of regiment or superior units and commissioned until the end of WWII.

1930年代の中ごろ、ドイツ陸軍は輸送負担の軽減を目的とし、軍用トラックのシャーシ規格統一に着手した。すなわち、軽・中・重の3段階の規格が設定され、主要な5種類の規格統一されたシャーシが用意された。自動車メーカーは、自社のエンジンとギアボックスを、これらの規格シャーシに搭載したのである。

ビュッシング-NAG社は、1903年に設立された主にバスやトラックを製造するメーカーであった。1933年にドイツ政府によって収用され、以降同社は4.5トンの軍用トラックの製造に専念するようになった。その系列の中で最も軽量なものが500A(4輪駆動)と500S(2輪駆動)で、どちらも150馬力・6気筒ディーゼルエンジンを搭載、ドイツ陸軍によって規格されたシャーシと運転席を利用し、1938年から1941年まで製造された。そこから派生したモデルが4500Aと4500Sで、1942年に製造が始められた。500A/Sと同じ仕様に基づいているので、外見上はわずかな違いしかなかった。戦闘での様々なニーズに応えるため、4500A/Sをベースとしてさらに特殊な改造を施したタイプが数多く存在したのである。また後期には資材の節約と製造工程の短縮のために、簡易型モデルも生産された。

機械化部隊の戦場での修理・補修能力を高めるため、ドイツ国防軍は3トンの吊り上げ能力を持つビルスタイン社製クレーンを採用、搭載車両として、ビュッシング-NAG 4500Aおよび500Aを選択した。このクレーンは、360度の旋回と15度の傾斜地でも作業ができる能力を持っており、3トンの吊り下げ時には3.85m、2トンの吊り下げ時には4.85mの長さにアームを伸ばすことができた。この性能により、戦車のエンジンや主砲の換装など、さまざまな作業に対応が可能であった。車輛の後部には牽引用の装備がついており、スタックした装輪車輛の救助にも使用された。1943年11月以降、3トクレーン装備のビュッシング-NAGは、Kfz.100の型式名称が与えられた。Kfz.100は、師団や連隊の修理大隊に配備され、終戦まで広く用いられたのであった。

在20世紀30年代中期，為了減輕後勤作業的負擔，德國嘗試建立軍用載重車輛底盤的標準化，將適應不同需求的輕、中、重型載重車輛底盤各自予以標準化，來提供不同的汽車公司安裝自己的發動機與變速箱等組件，在這樣的要求下完成了五種主要的標準化卡車底盤。

Büssing-NAG是德國一所設立於1903年專門生產公共汽車與載重卡車的公司，二戰爆發前的1933年起為軍方徵用，專門生產載重達到4.5噸以上的軍用載重車。此一系列中最為輕量的車輛為四輪驅動的500A型，與二輪驅動的500S型，都採用了105匹馬力六汽缸的柴油引擎，生產期由1938年至1941年間，組件中使用了德軍標準化的底盤及駕駛室，1942年出現了這兩款車型的後繼型號，分別是4500A與4500S，與500A/S幾乎基於相同的技術規格，在外觀上也僅有稍許的差異，為了戰場上各種不同的需求，同時產生許多利用4500A/S為載台而衍生的特殊車輛。隨著戰事的進行，為了節省材料與生產工序的簡化，大戰後期又出現了幾款型式簡化的4500A/S。

為了提升德軍機械化部隊的戰場維修能力，國防軍選定Büssing-NAG 4500A或500A做為載臺，安裝由倍適登(Bilstein)公司設計，吊臂荷重可達3噸的吊車。該吊車能夠進行360度的轉向，並能平衡最大15度的地面傾斜。在3噸的荷重下吊臂能夠達到3.85公尺的長度，2噸荷重時吊臂能延伸至4.75公尺，提供了車輛的發動機吊掛與砲管更換等種種運用。車身後方也包含了牽引設備，能夠負擔輪型車輛的拖救任務。1943年11月之後，安裝3噸吊車的Büssing-NAG車輛被統一稱之為Kfz. 100，通常配備在團級以上單位的維修連中服役至大戰結束。

Illustration:圖示說明



Method For Applying Decals:

1. Clean Model Surface With Wet Cloth.
2. Cut Out Of Decal Sheet And Dip Them In Warm Water For 15 Seconds.
3. Place it on proper position on model.
4. Slide off base paper leaving decals On Model With Wet Finger Tip.
5. Move Decals To Exact Position, Push Out Excess Water Under Decal With Soft Cotton Cloth.
6. When Decals Get Dry Then Complete.

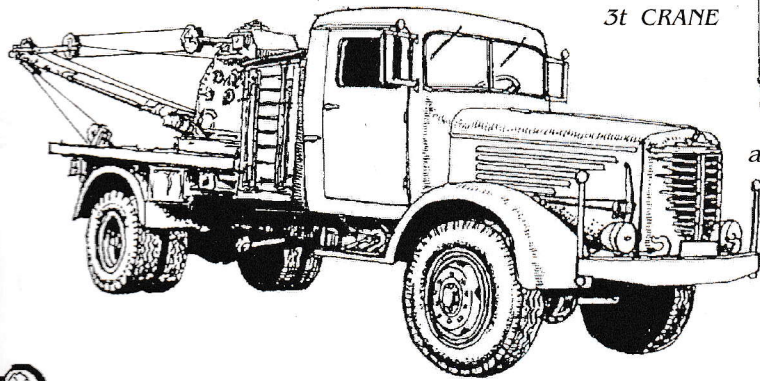
水貼紙使用說明:

1. 將模型表面擦乾淨
2. 將貼紙剪下泡入溫水中浸泡約15秒
3. 將泡濕之貼紙取出置於欲貼處旁
4. 用指尖輕推貼紙表面使其滑出底紙
5. 將貼紙調整至適當位置並輕擦拭水份
6. 待其自然乾燥後即完成

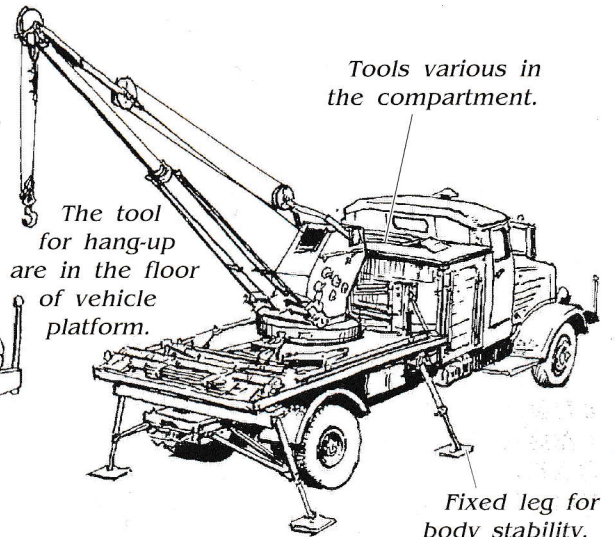
Color list: 塗料表

Color	Brand	Gunze Sangyo			Humbrol	Revell	Lifecolor
		Hobby Color	Mr.Color	Mr.Color Spray			
Green brown	綠褐	H402			93		
German gray	德國灰	H32	C40	J40	92	79	UA073
Flat white	消光白	H11	C62	J62	34	05	LC01
Olive green	橄欖綠	H405	C70	J70	149	363	UA08
Red	紅	H3	C3	J3	19	31	LC56
Red brown	紅褐	H47	C41	J41	160	383	UA085
Silver	銀	H8	C8	J8	11	90	LC74
Steel	黑鐵	H18	C28	J28	53	91	LC76
Tire black	輪胎黑	H77	C33+C62		85	302	LC02
Wood brown	木棕	H37	C43		169		FS12
Yellow FS13538	黃	H329	C329		188		LC53

Kfz.100 Bussing-NAG4500A-1 w/3t CRANE



3t CRANE

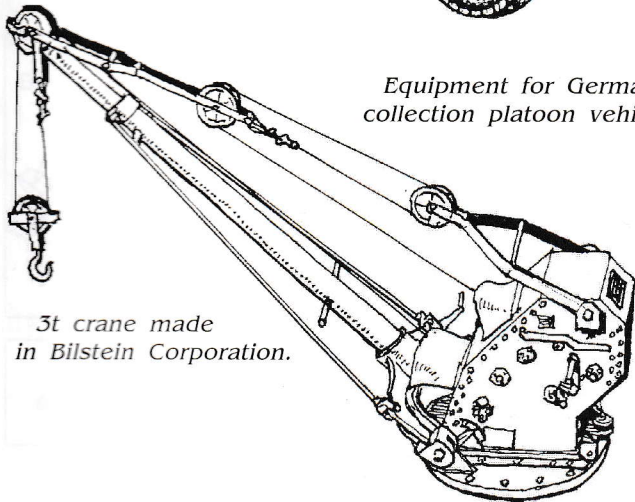


Tools various in the compartment.

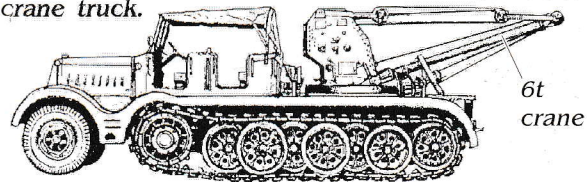
The tool for hang-up are in the floor of vehicle platform.

Fixed leg for body stability.

Equipment for German maintenance squadron collection platoon vehicle One 3t crane truck.

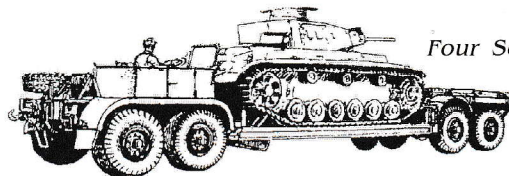


3t crane made in Bilstein Corporation.



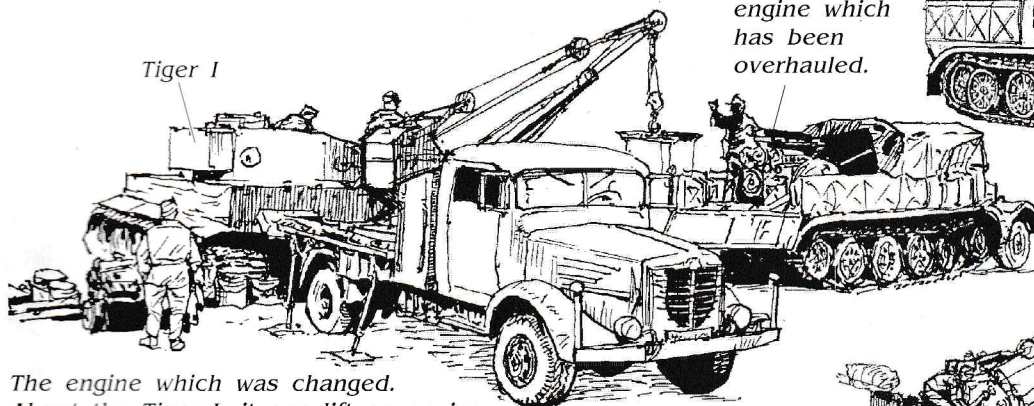
6t crane

One Sd.Kfz.9/1 with 6t crane.



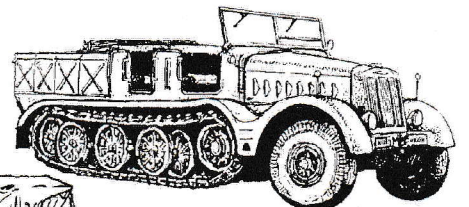
Four Sd.Anh116 trailers.

Engine replacement of Tiger I



Tiger I

The engine which has been overhauled.

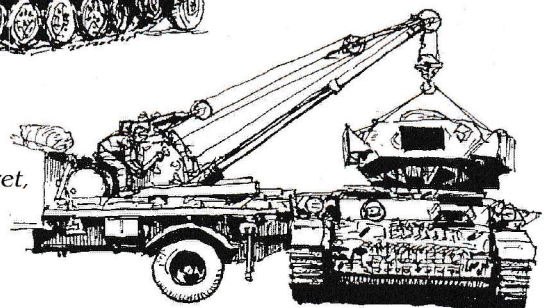


Six-ten Sd.Kfz.9 18t heavy tractors.

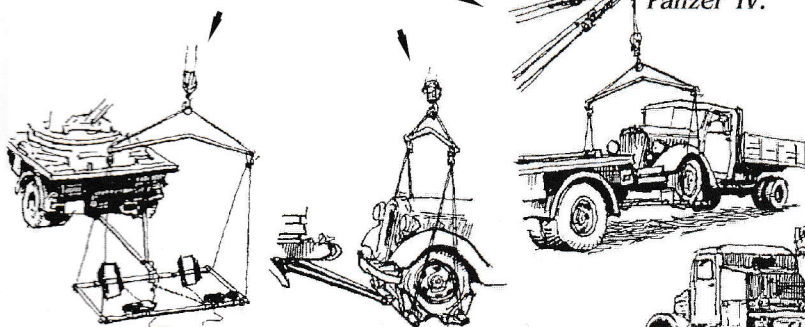
The engine which was changed. About the Tiger I, it can lift an engine.

Lift of the turret, it is possible to Panzer III and Panzer IV.

Vehicle towing tool equipment.



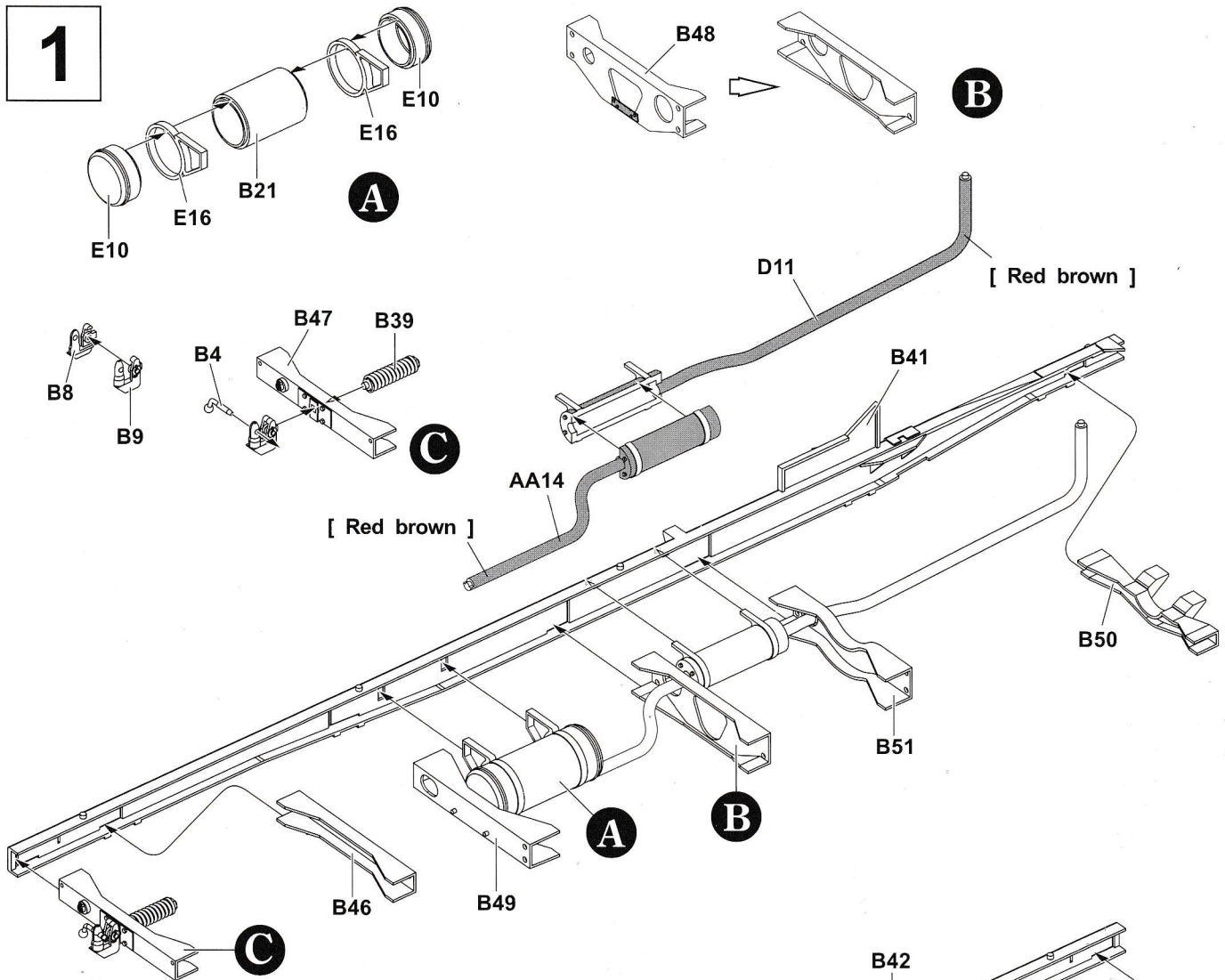
The crane truck deployed in the maintenance squadron was used for the exchange of the engine and gun.



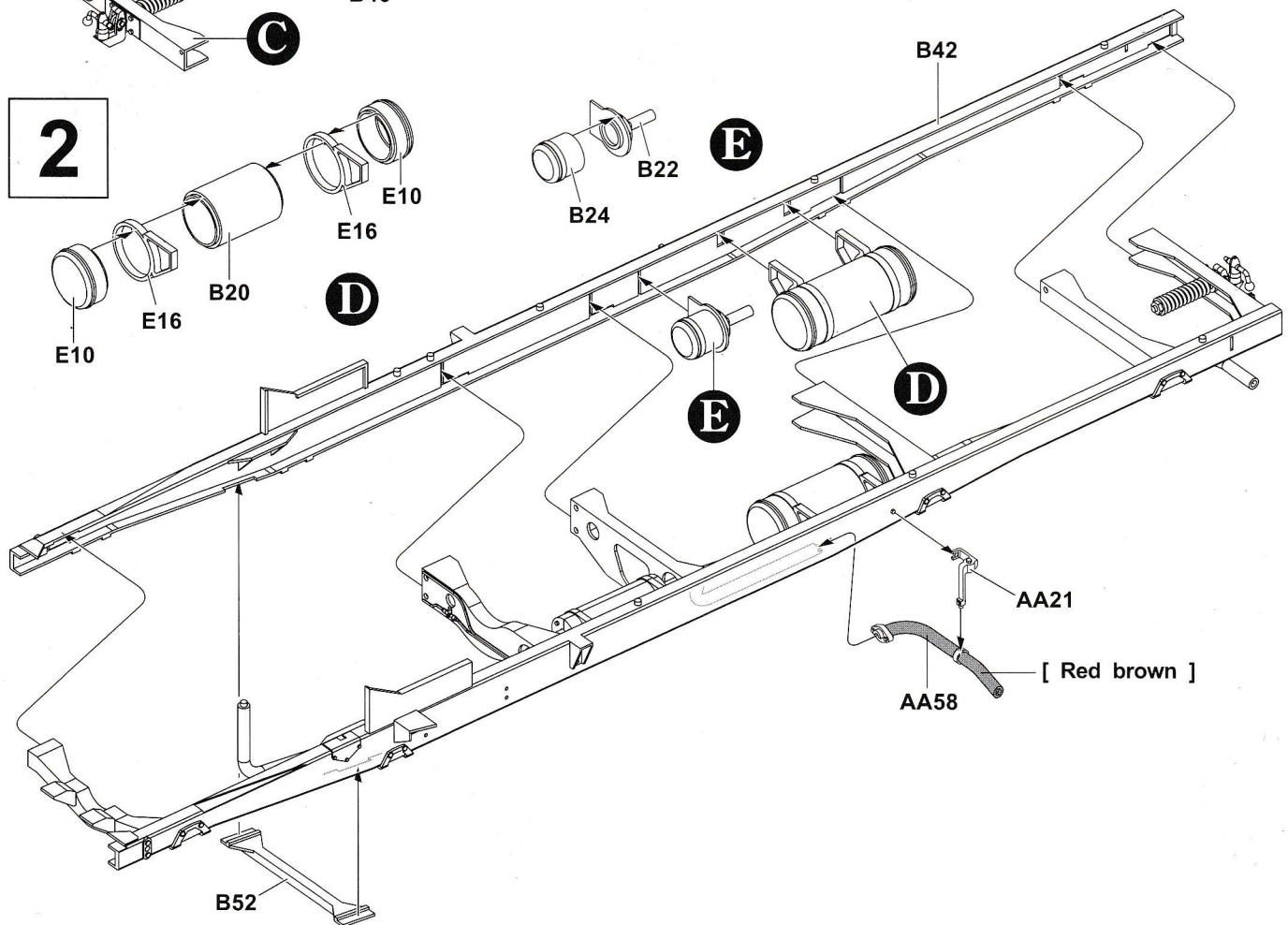
The cross-linked military unit of the military engineer used a crane truck, too.

Shin.ueda
上田 信

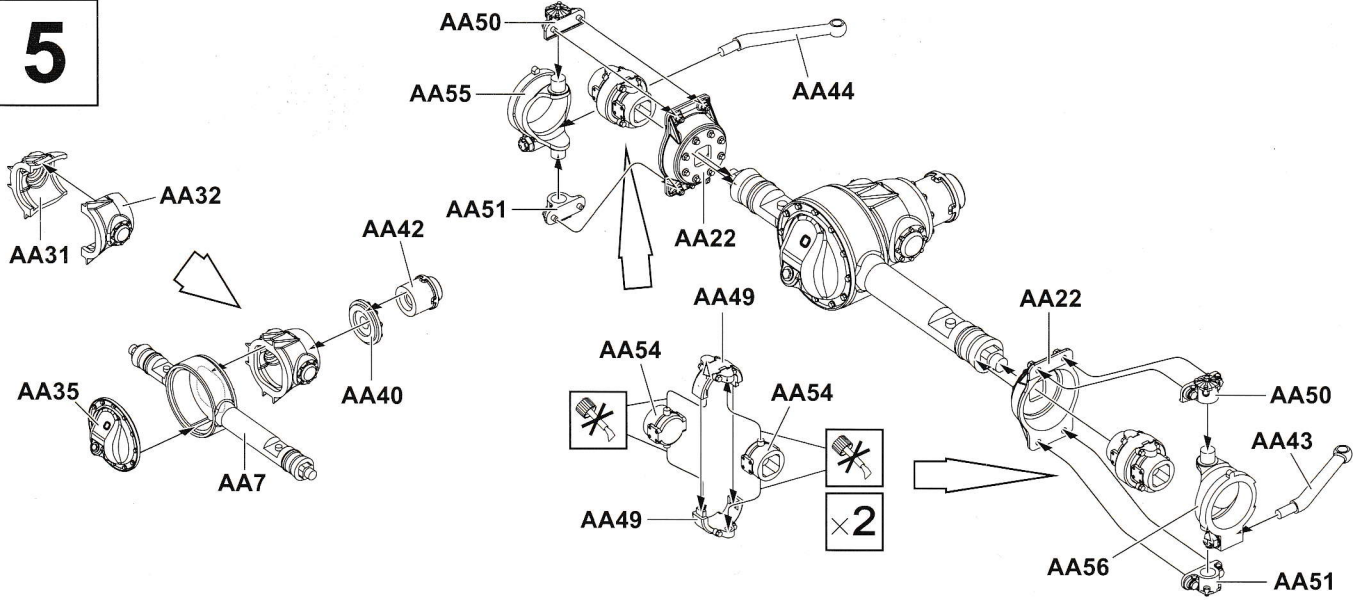
1



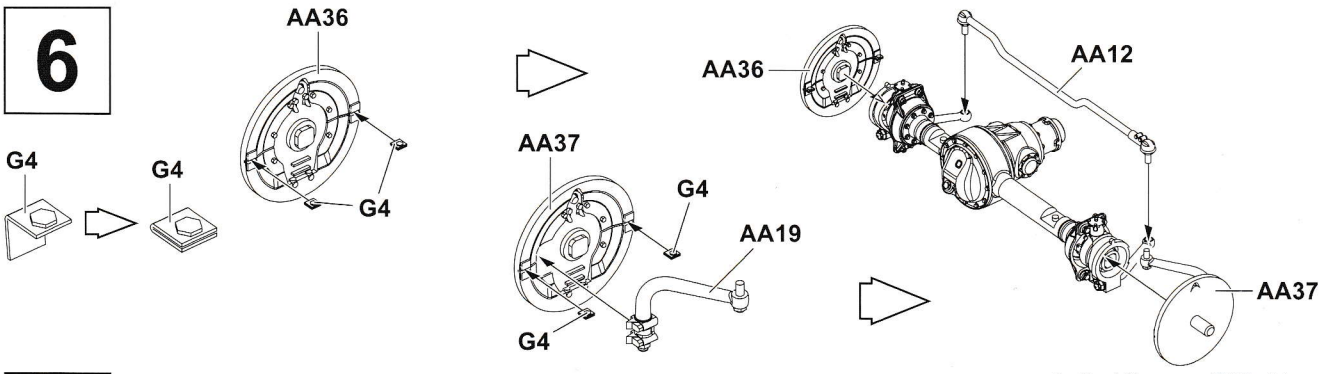
2



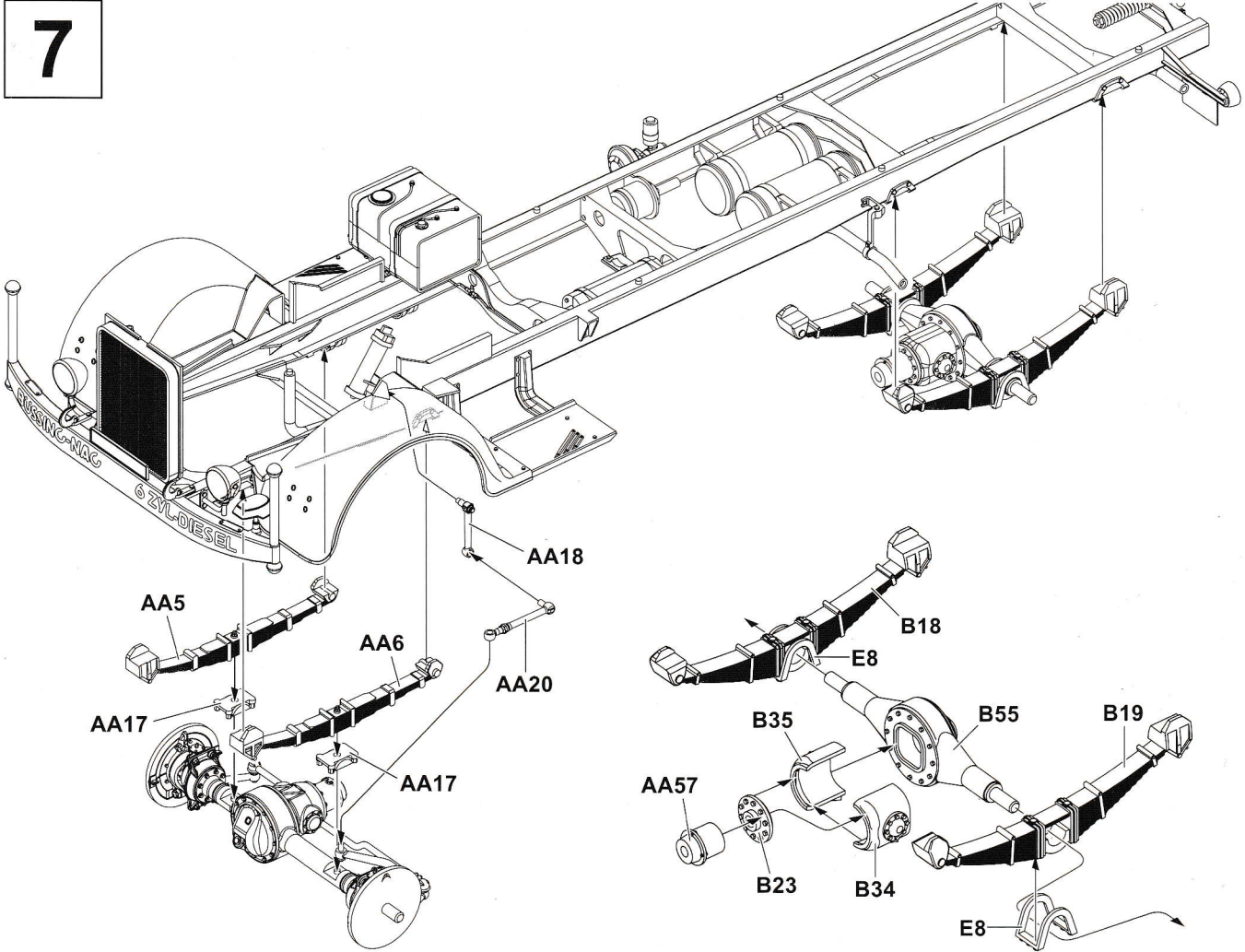
5



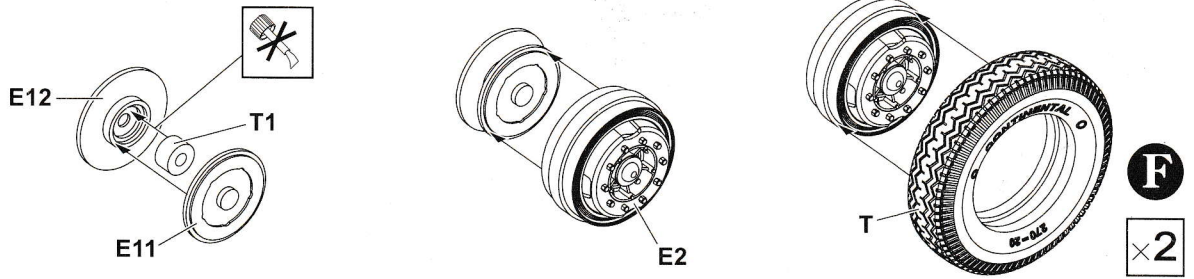
6



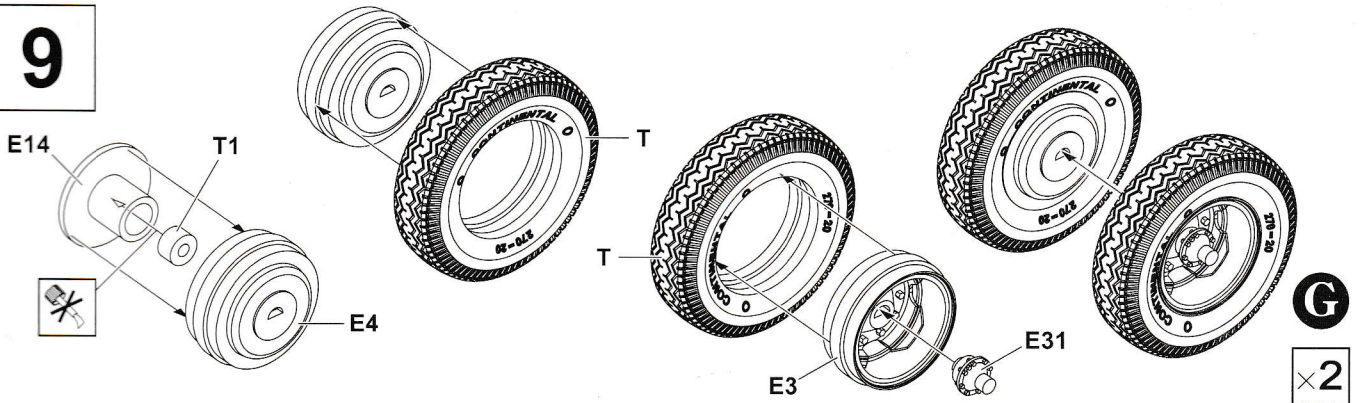
7



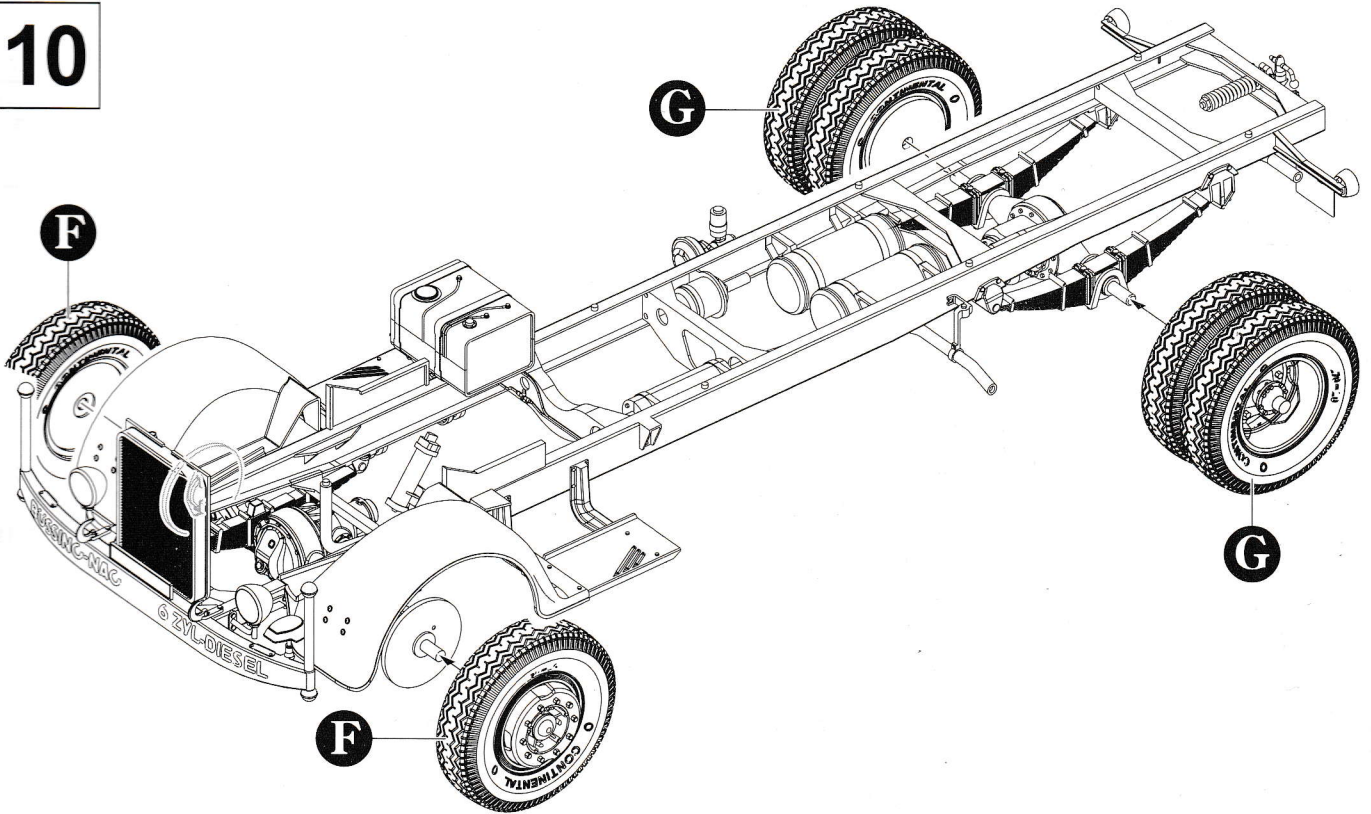
8



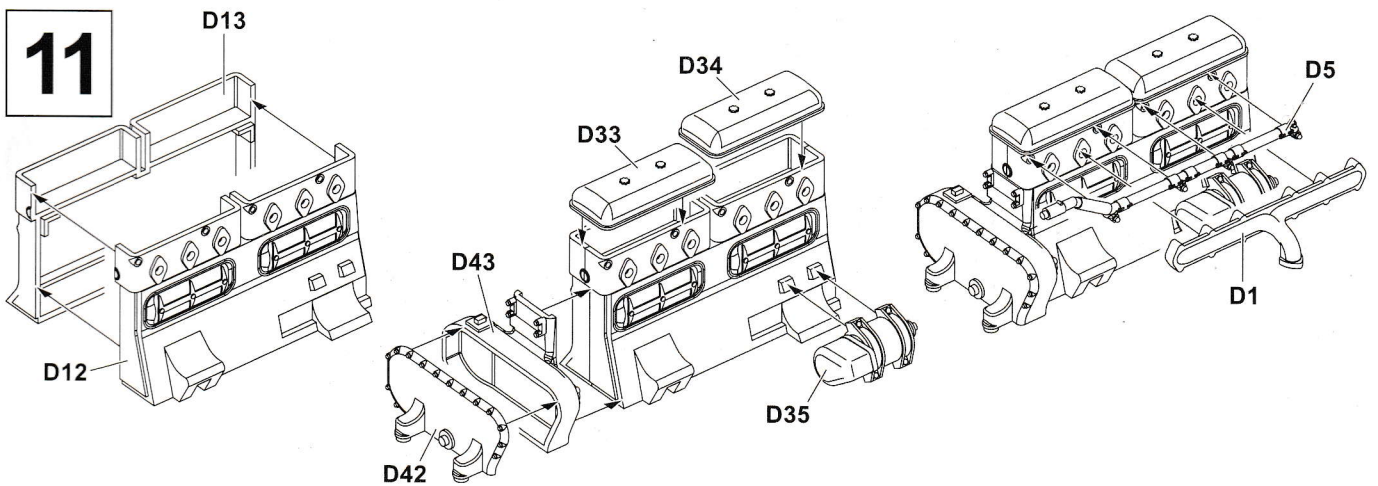
9



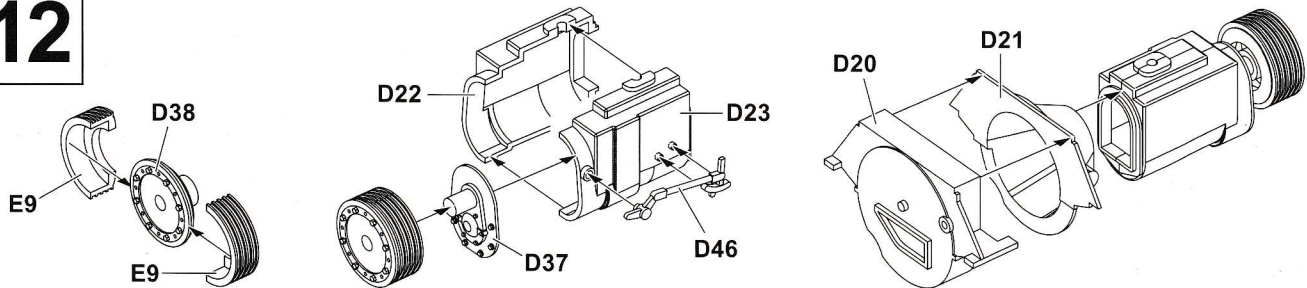
10



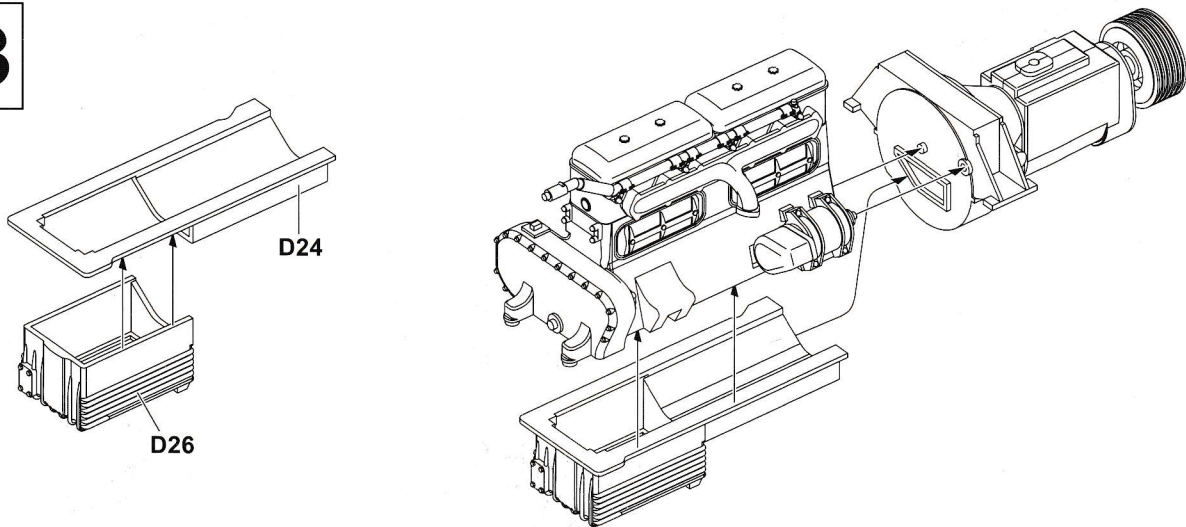
11



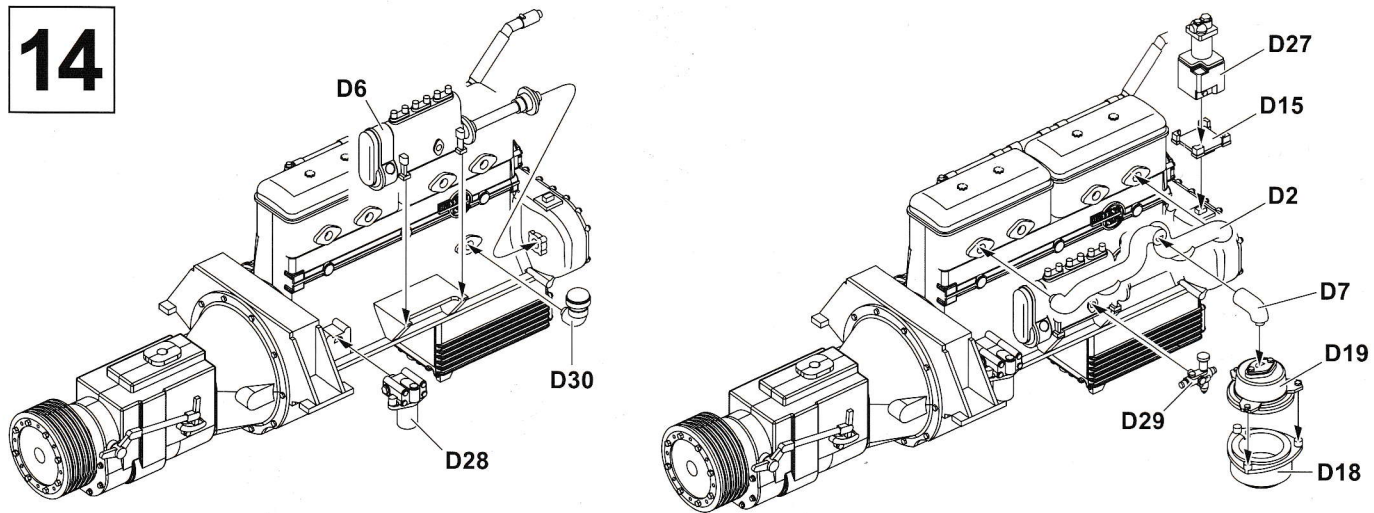
12



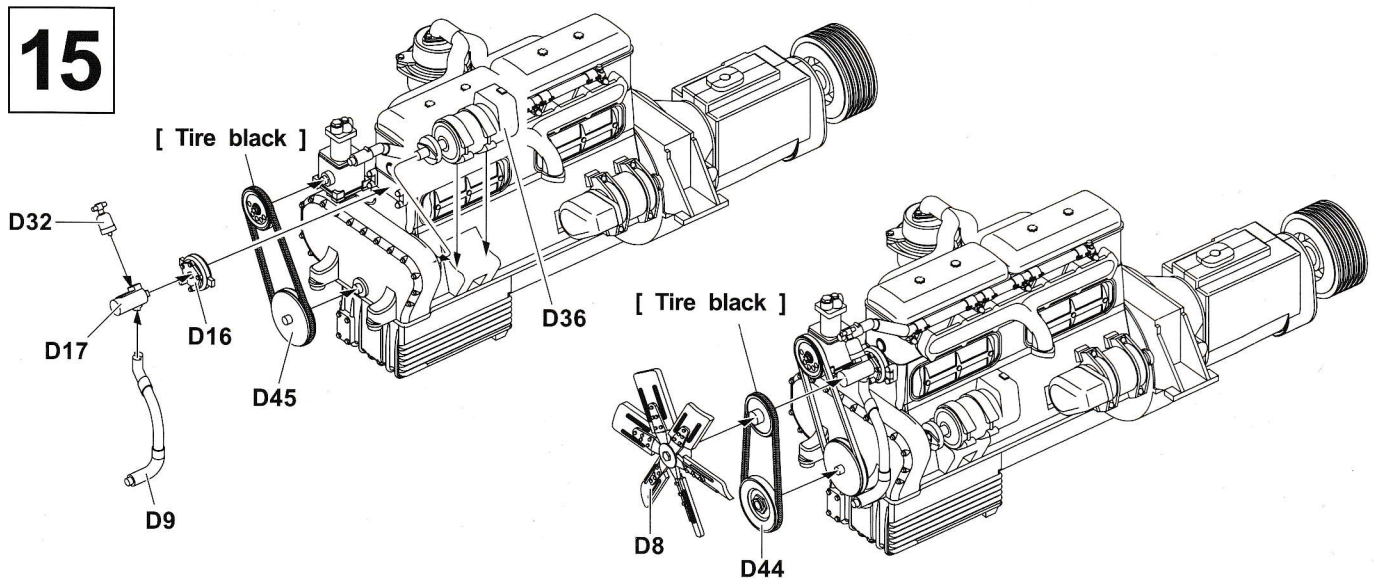
13



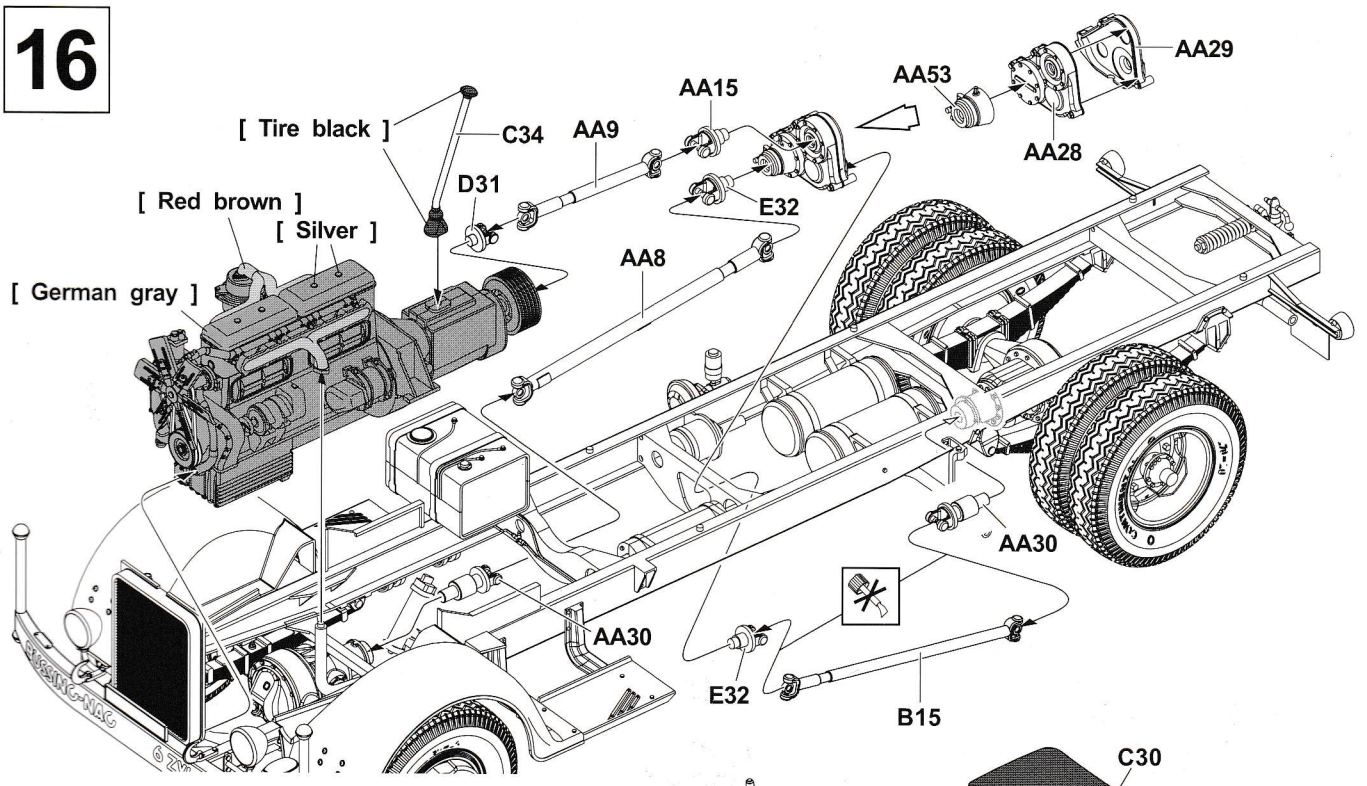
14



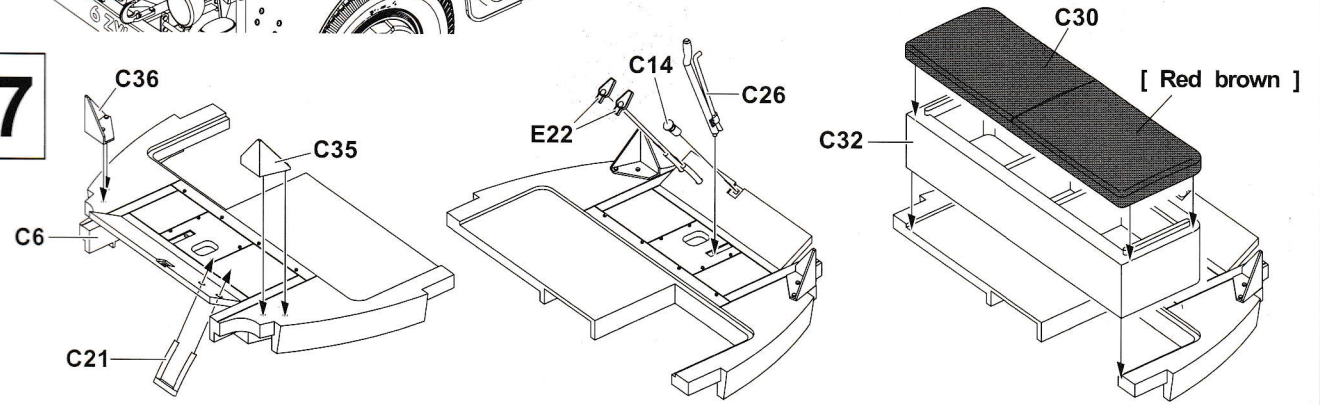
15



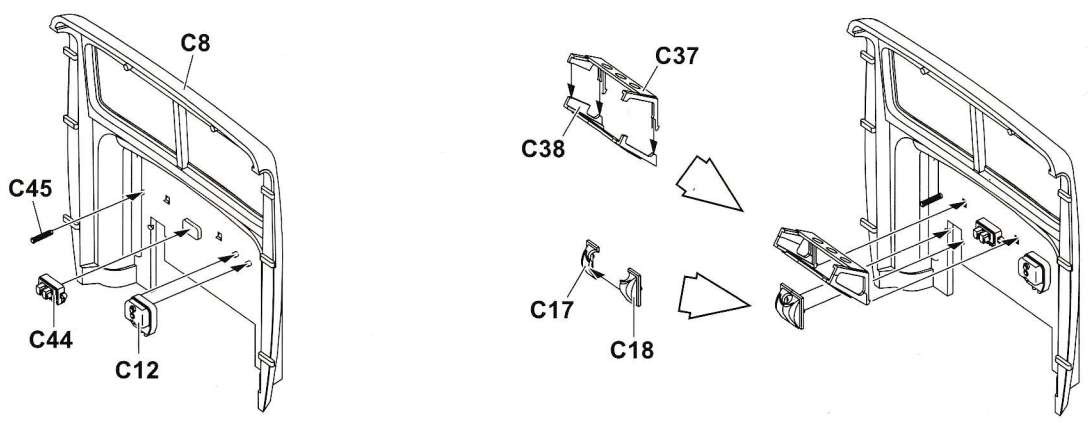
16



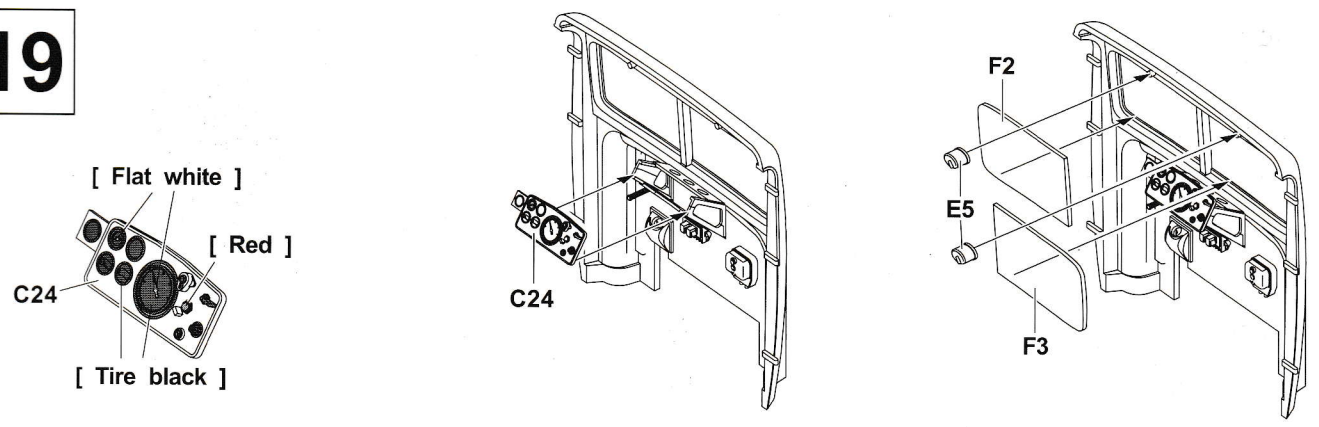
17



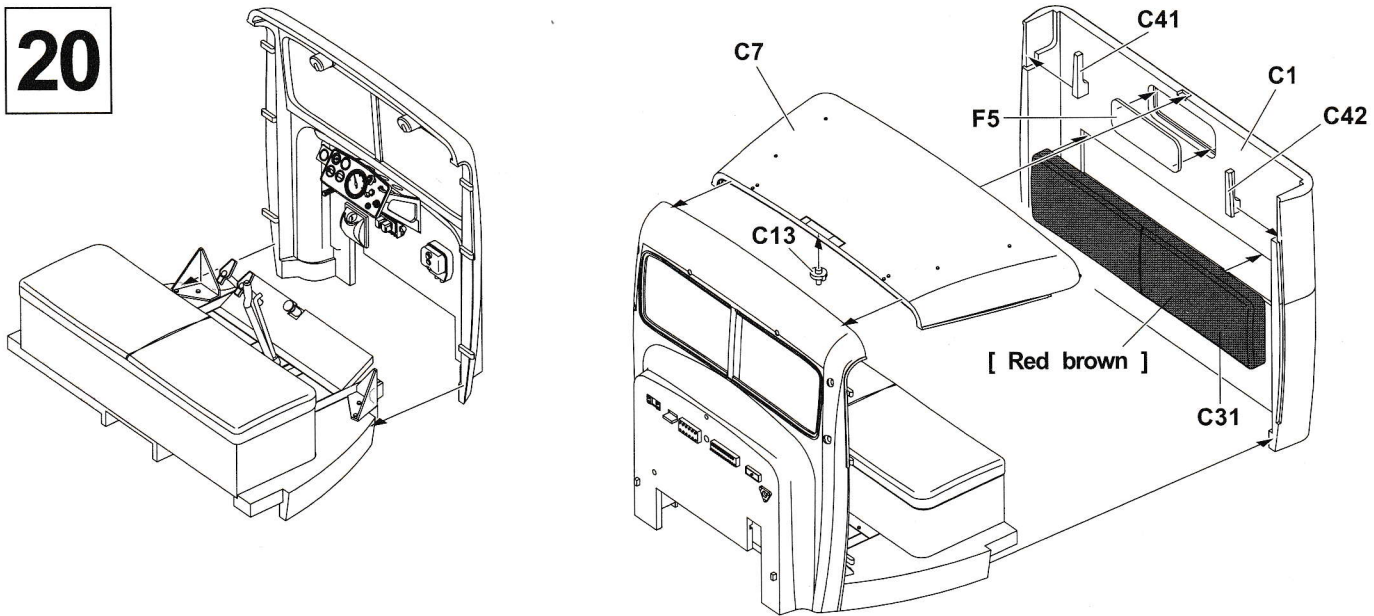
18



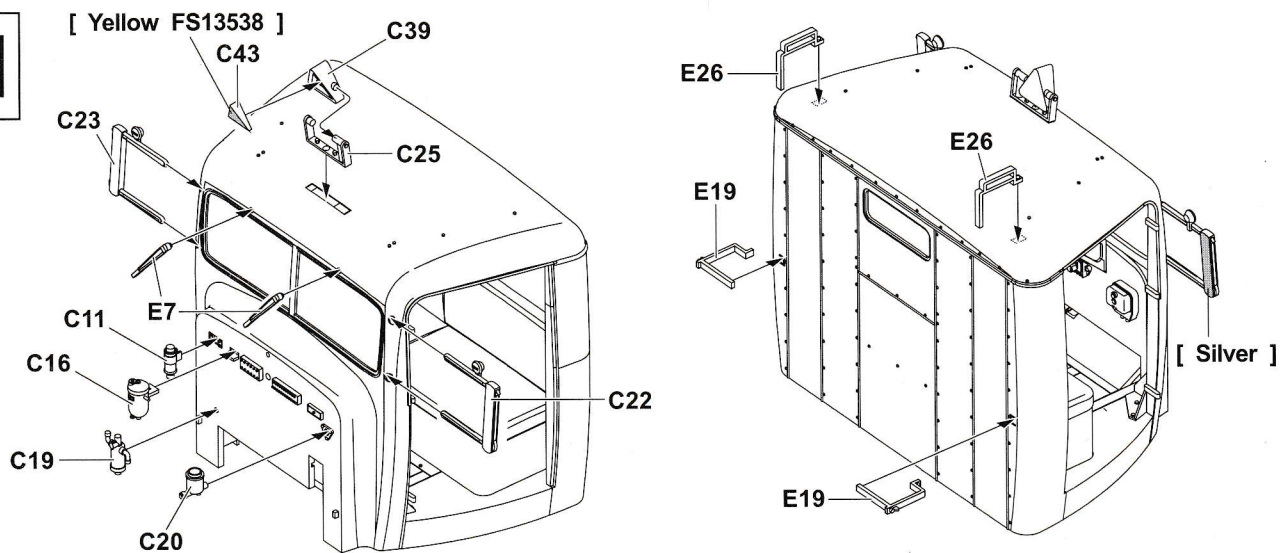
19



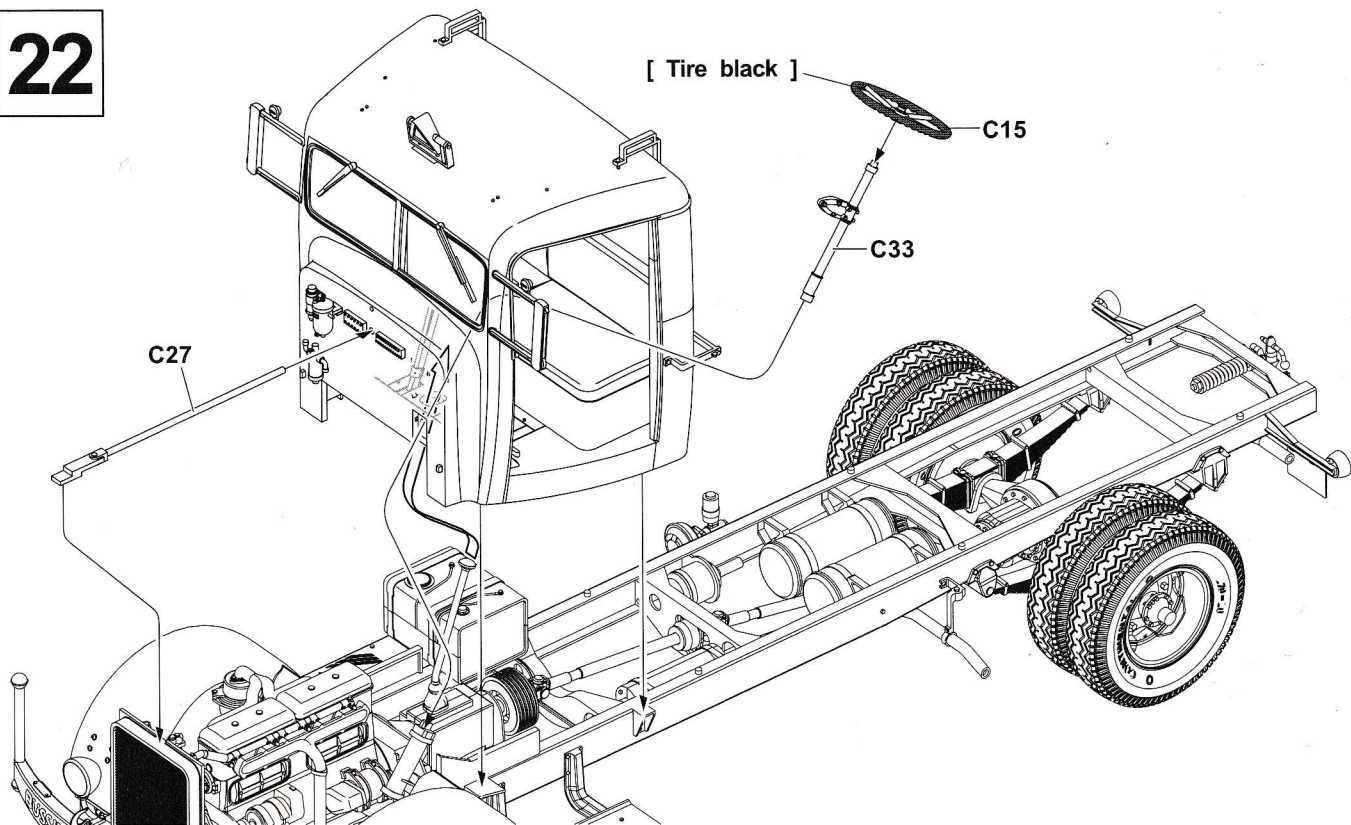
20



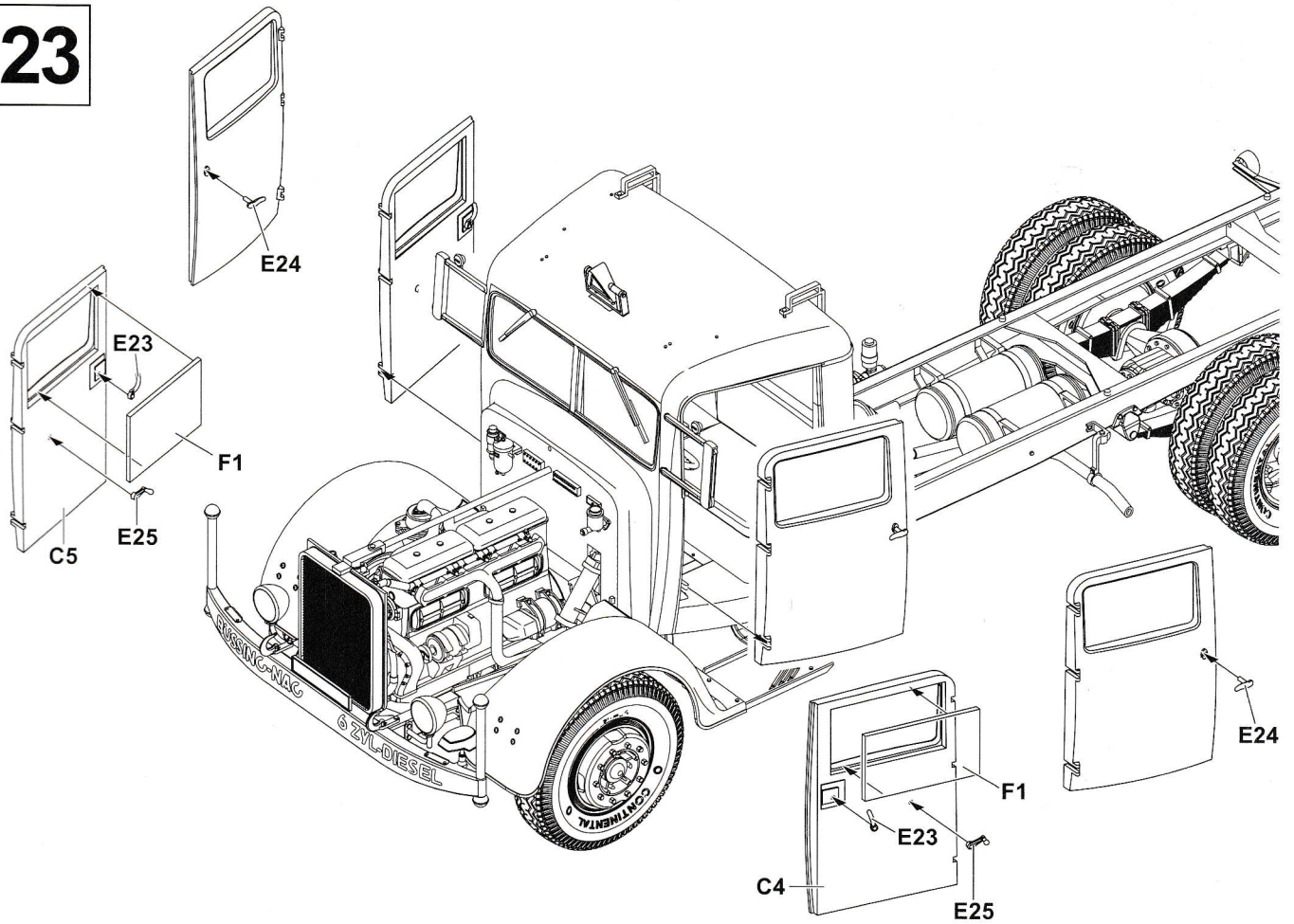
21



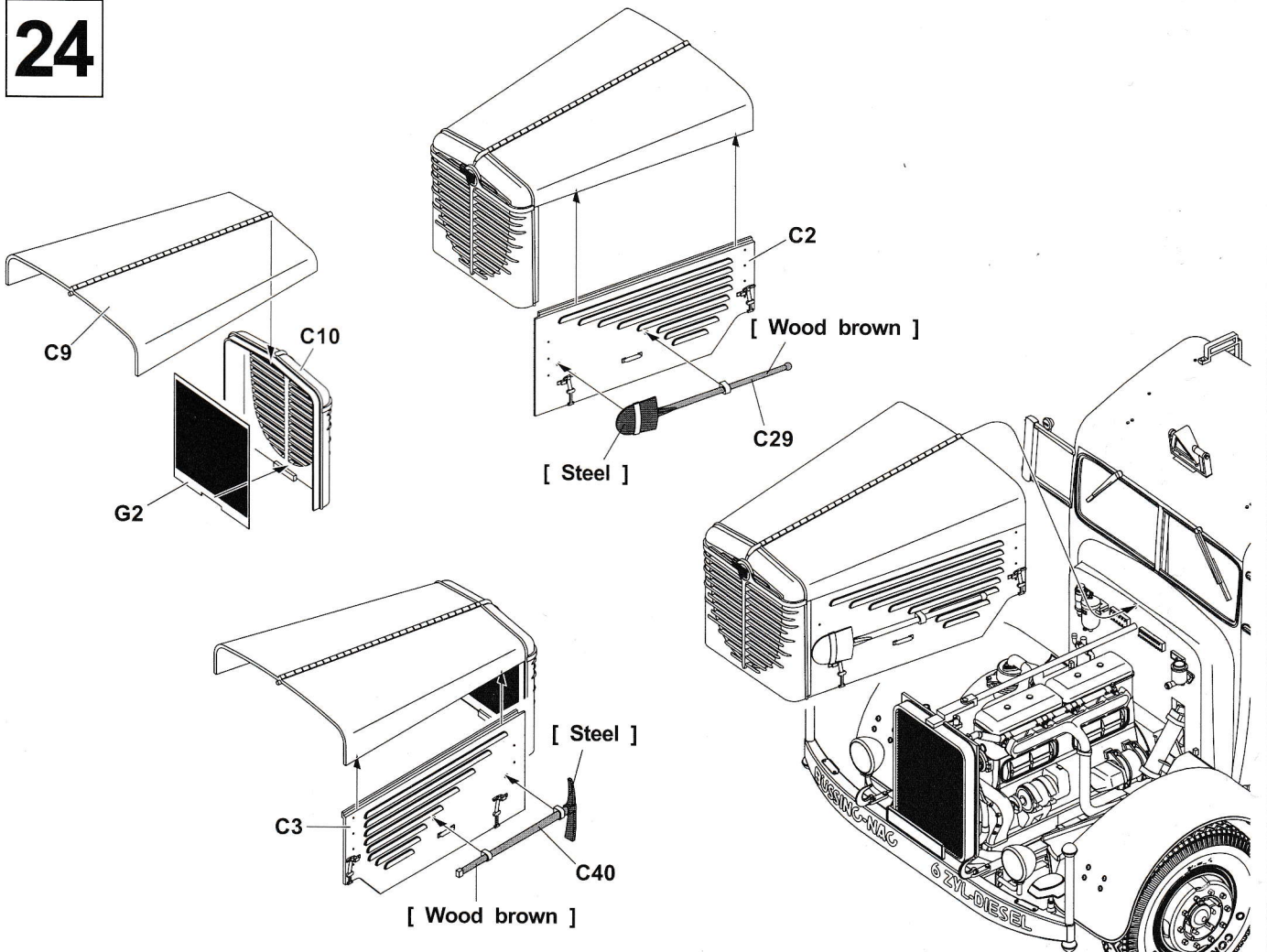
22



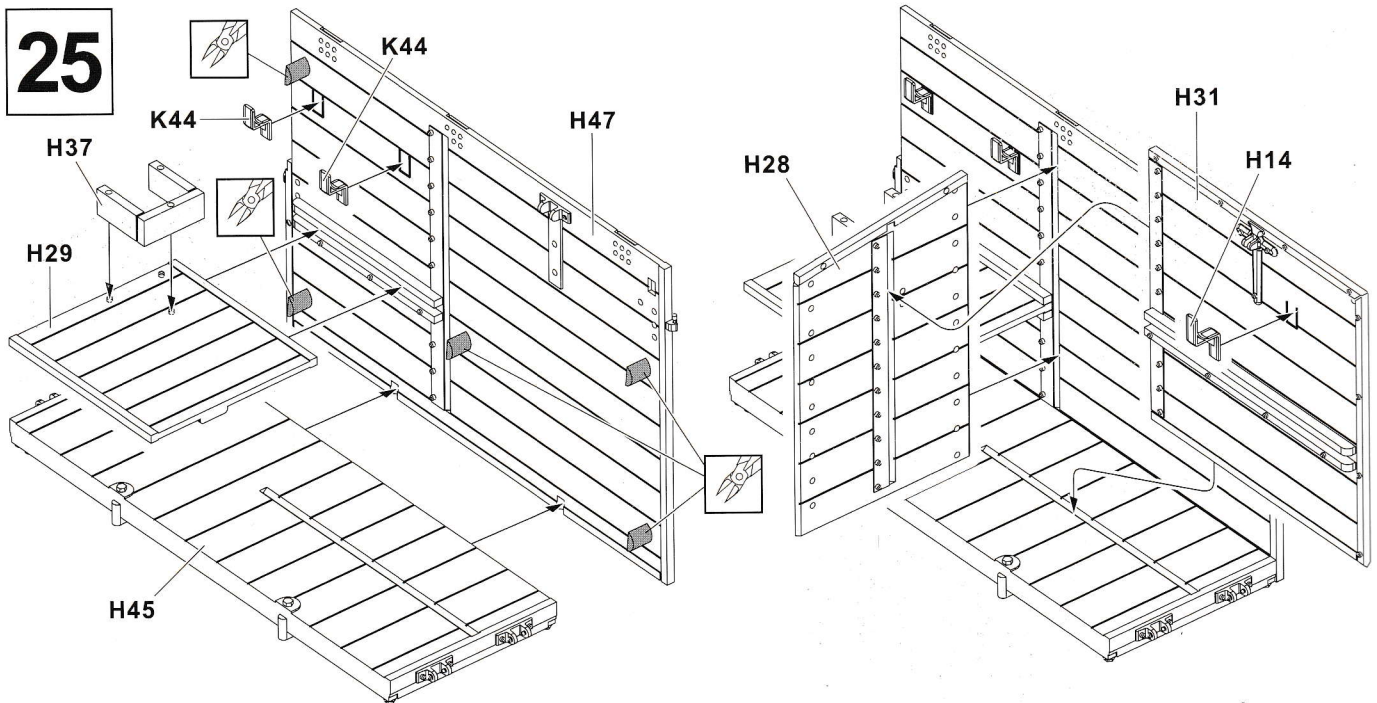
23



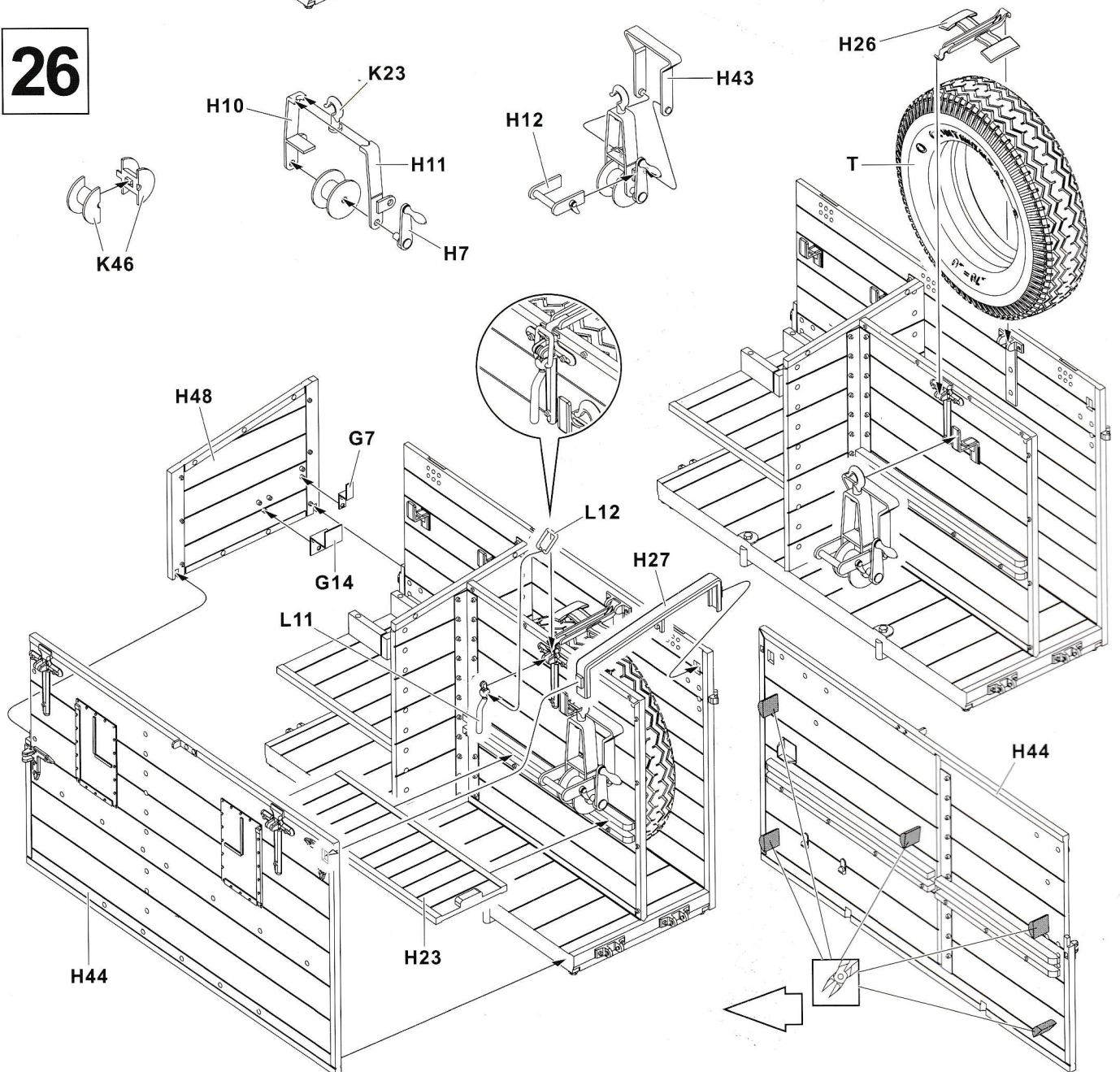
24



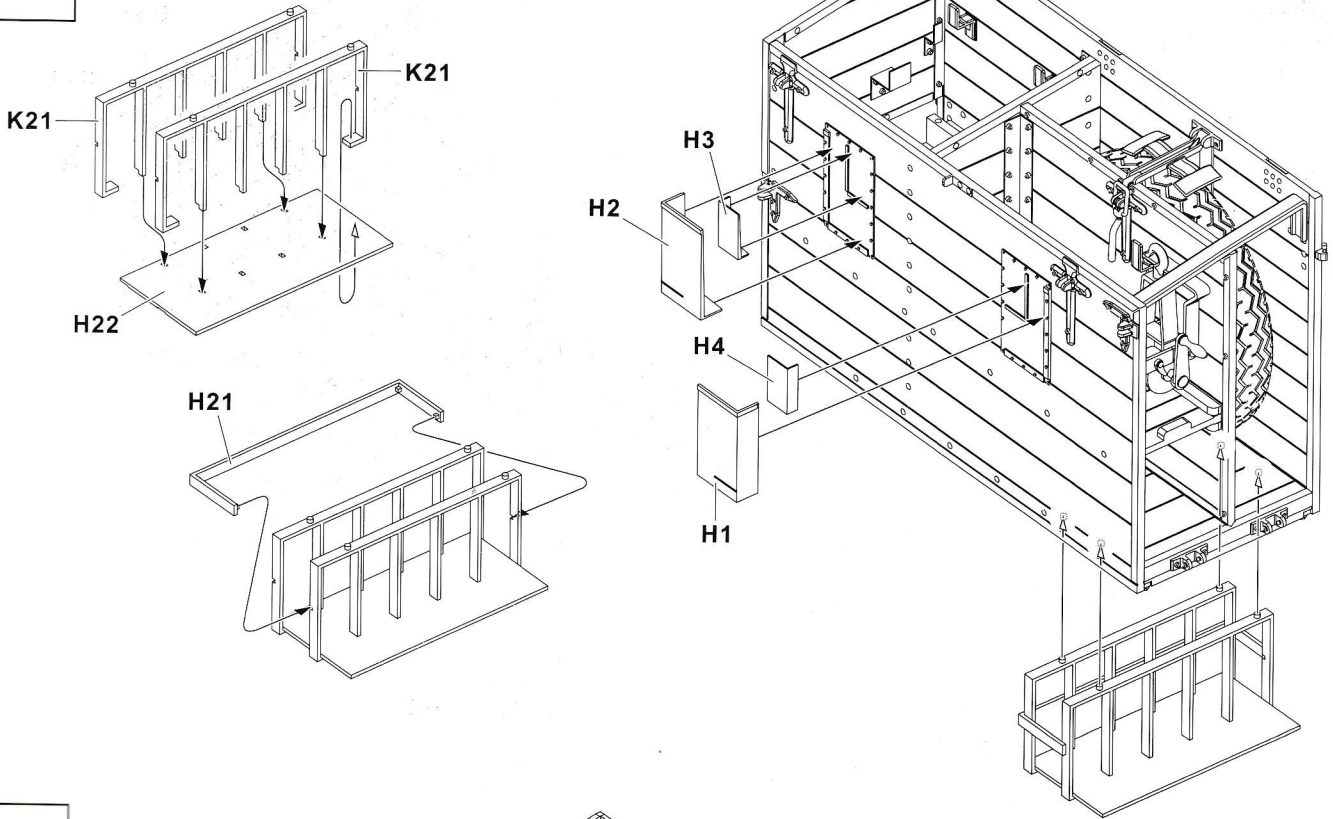
25



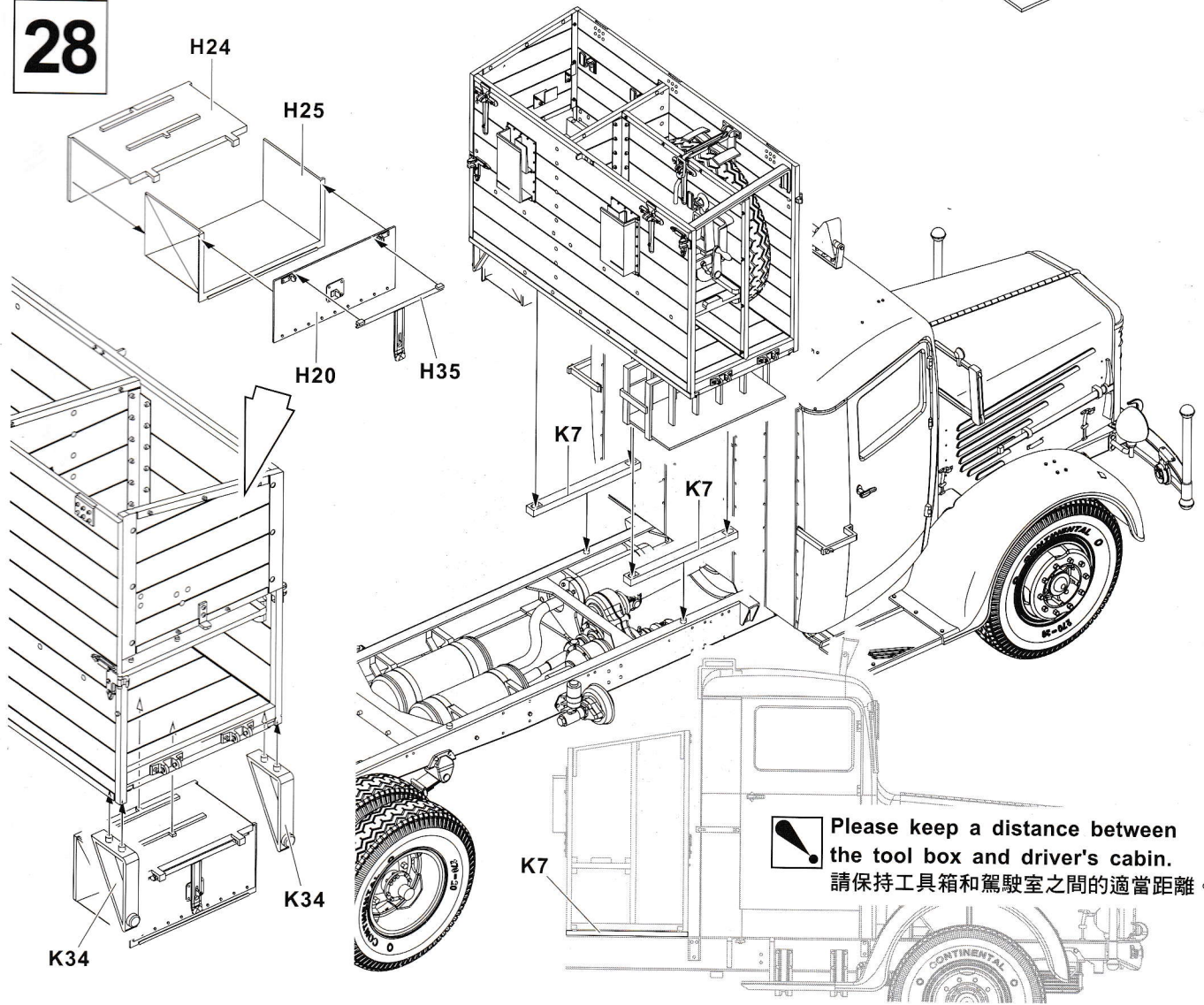
26



27

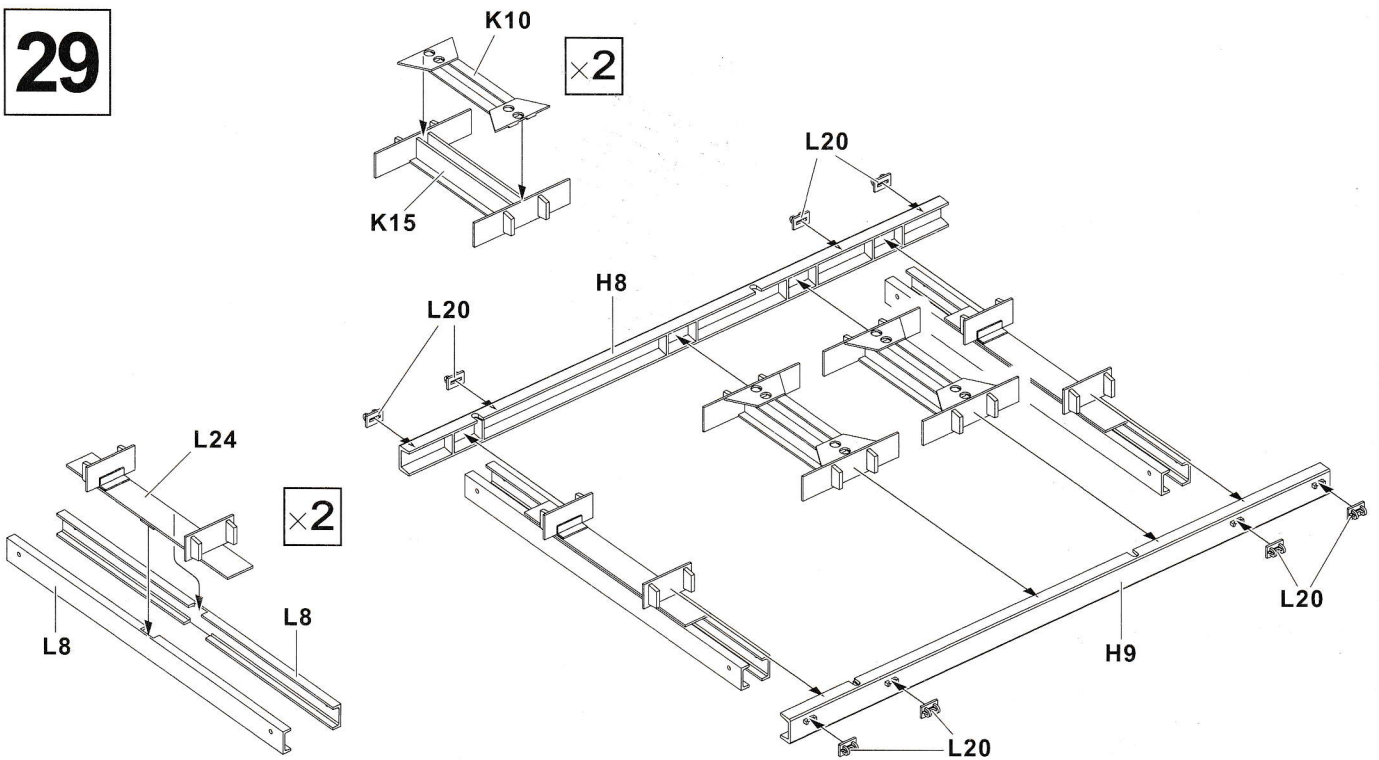


28

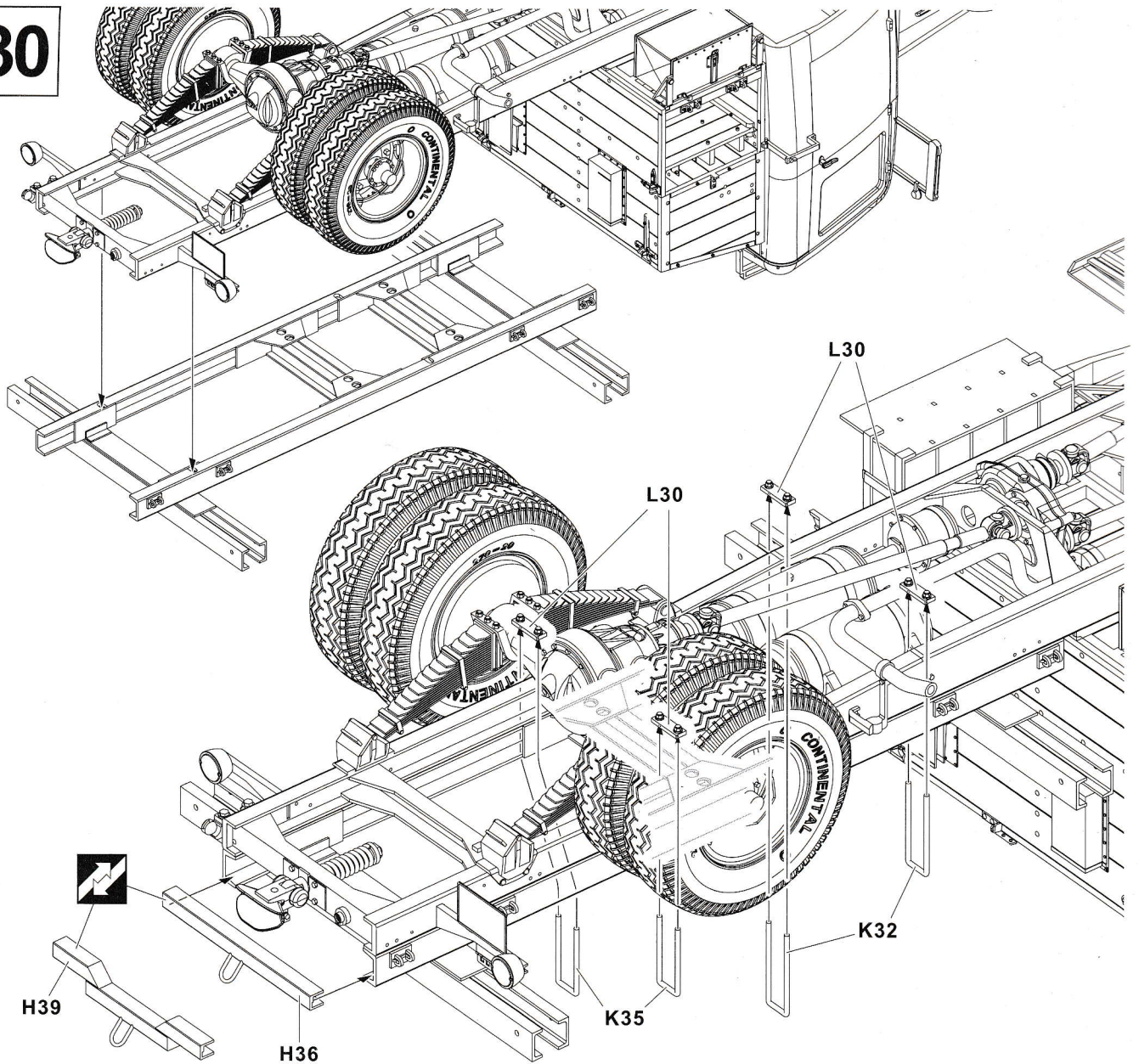


⚠ Please keep a distance between the tool box and driver's cabin.
請保持工具箱和駕駛室之間的適當距離。

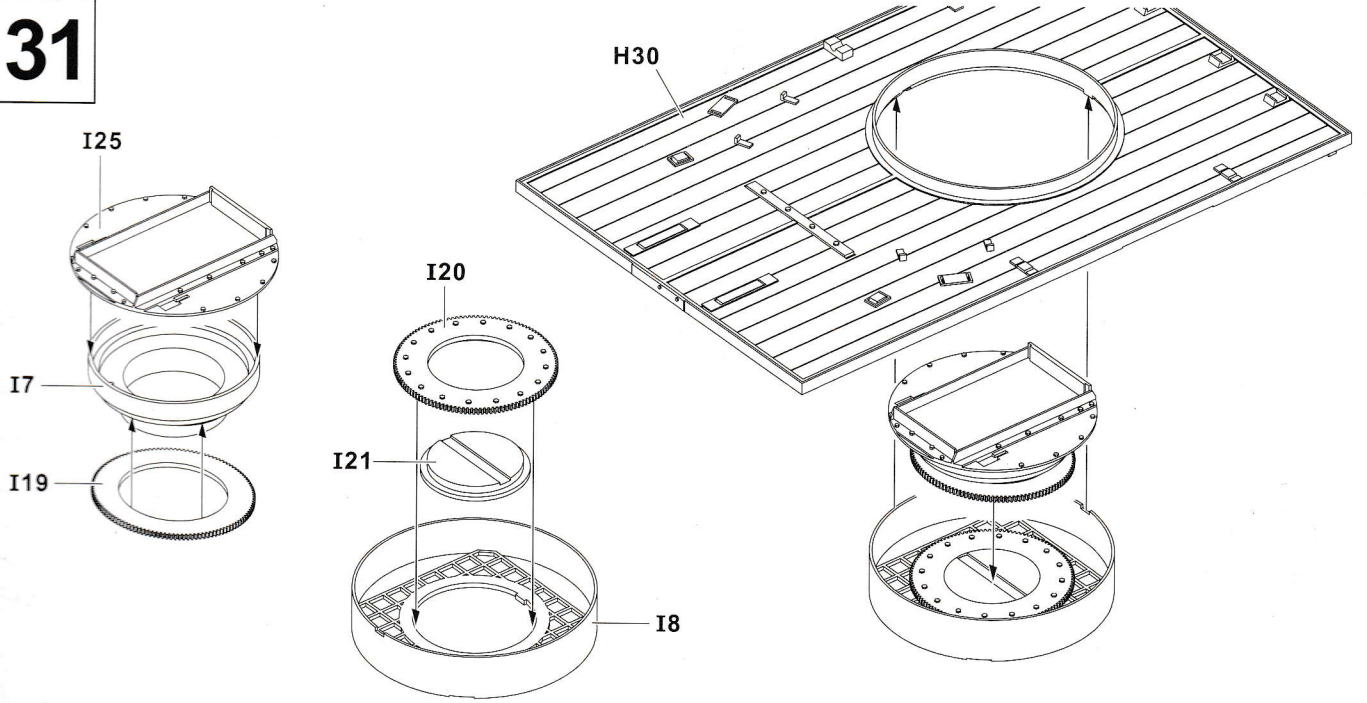
29



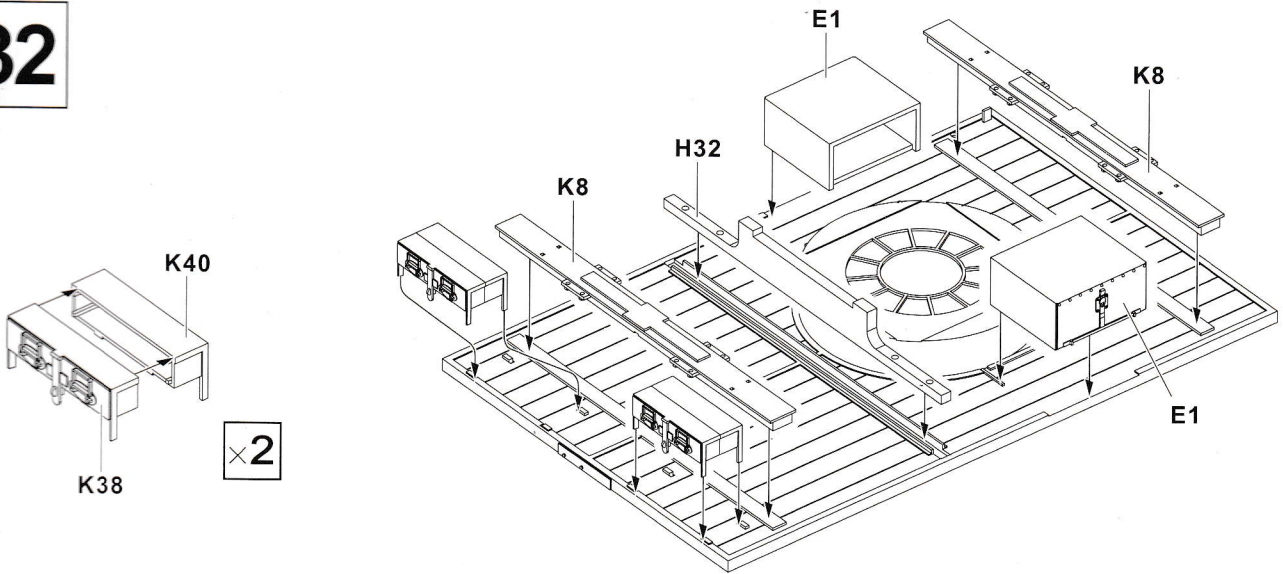
30



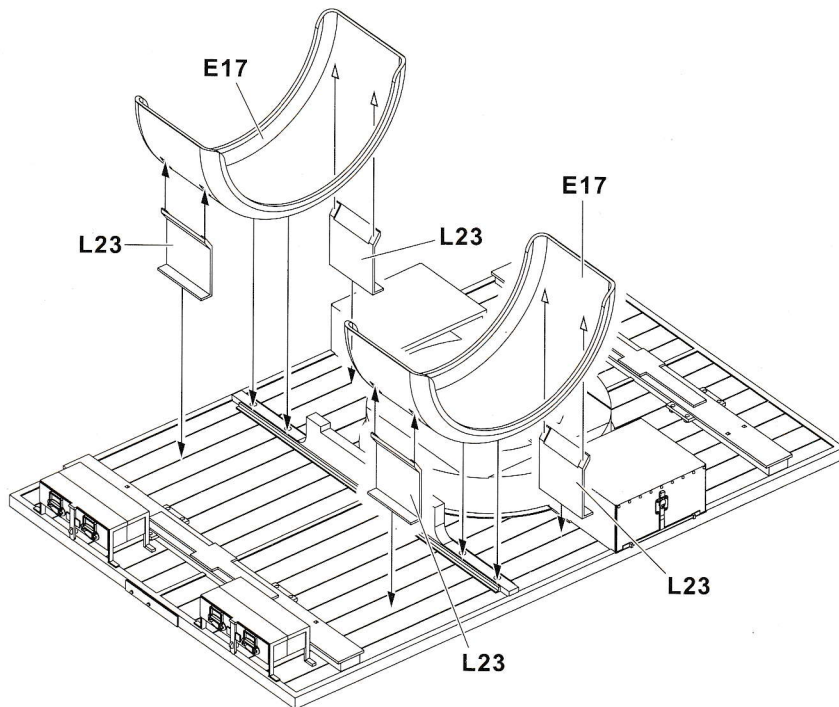
31



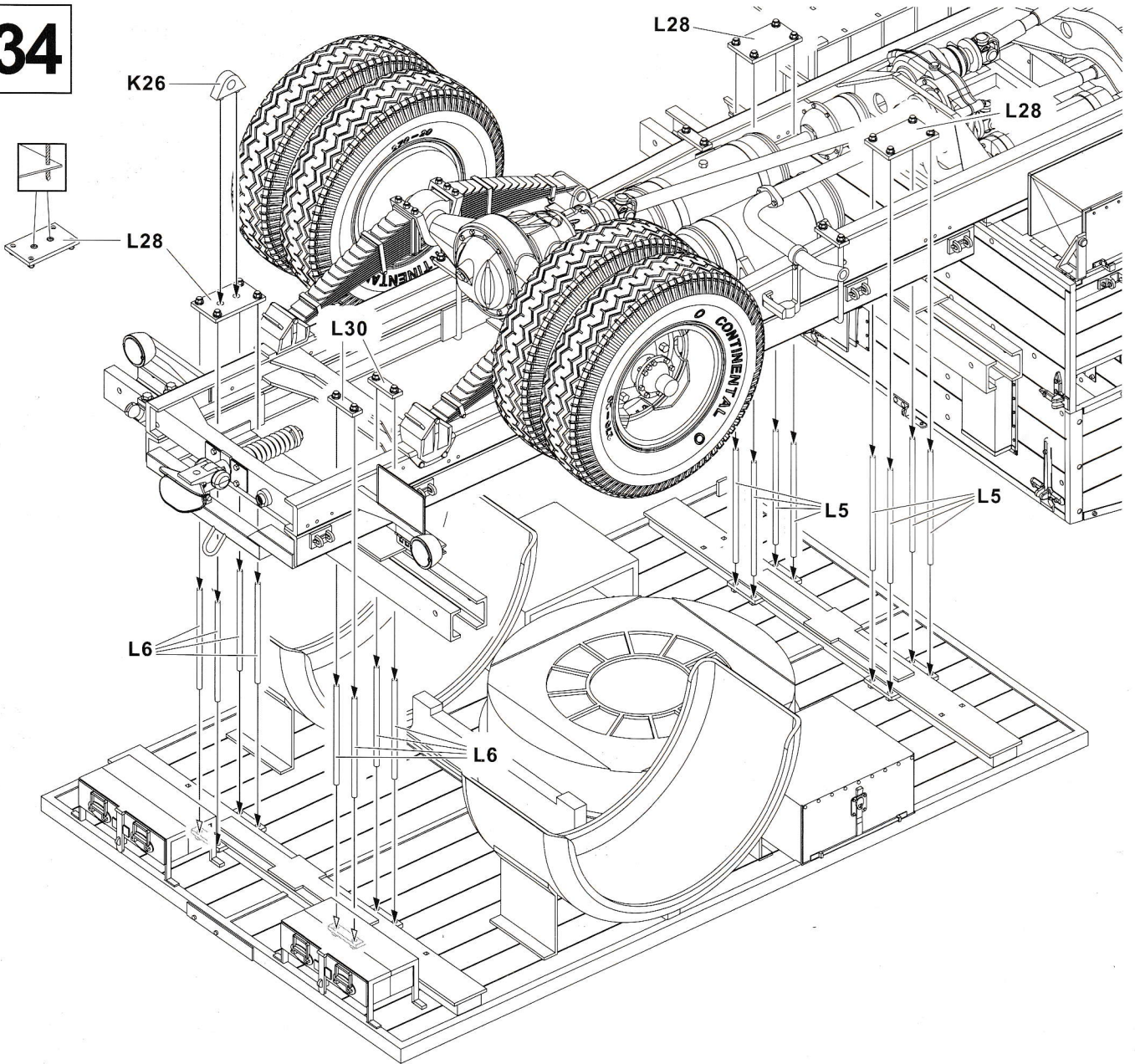
32



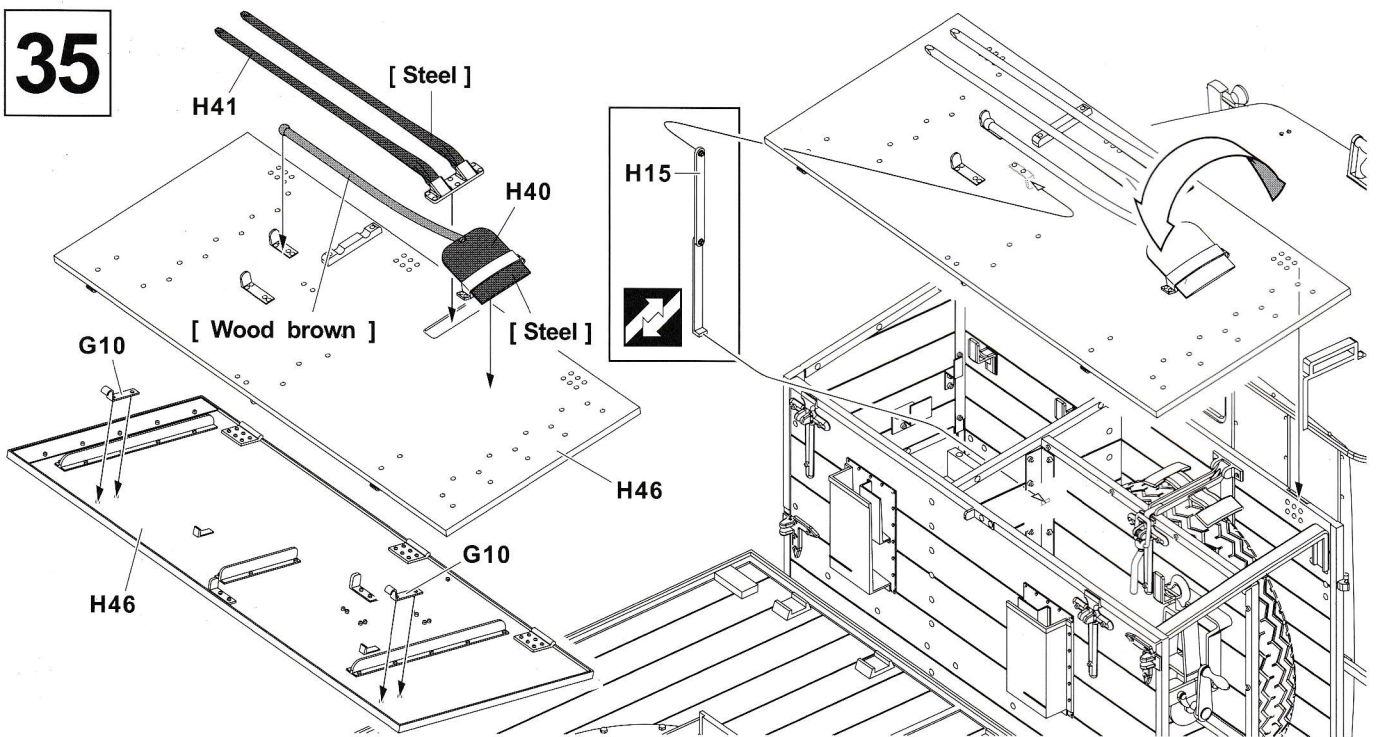
33



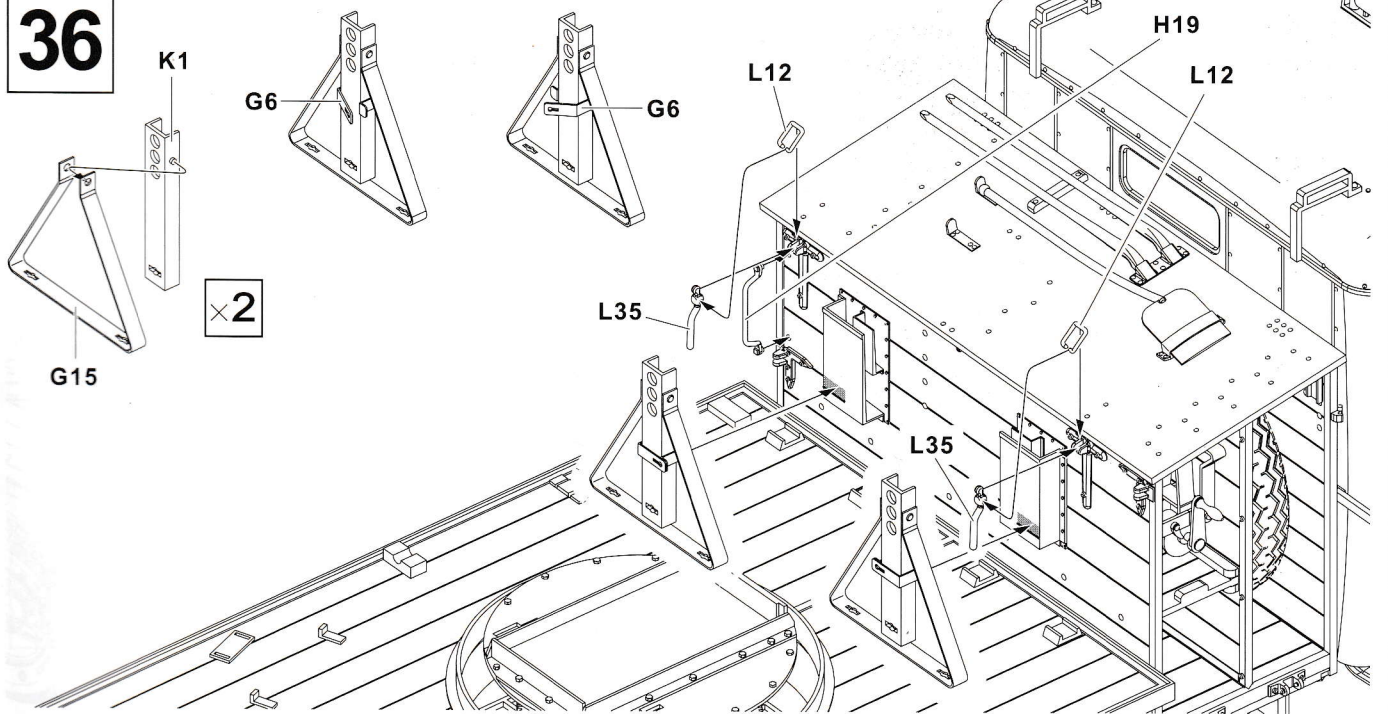
34



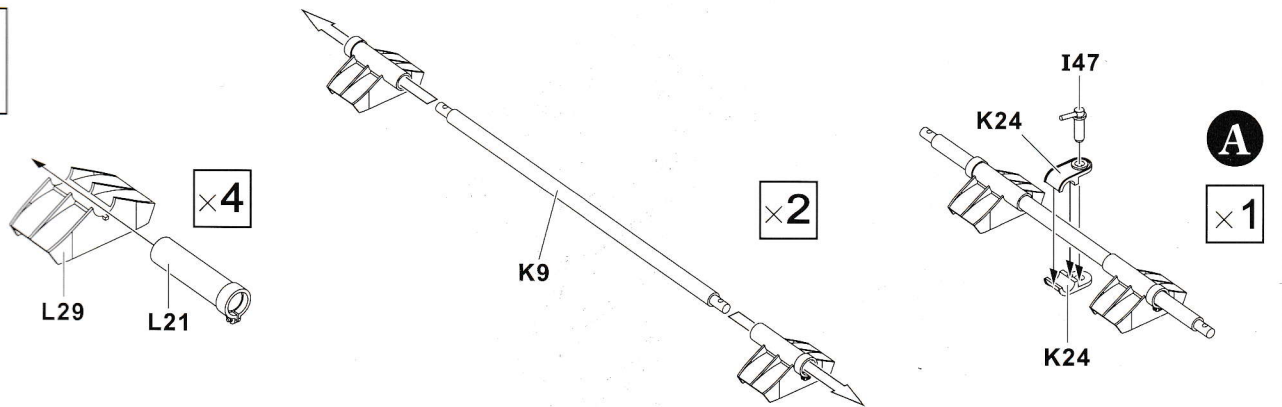
35



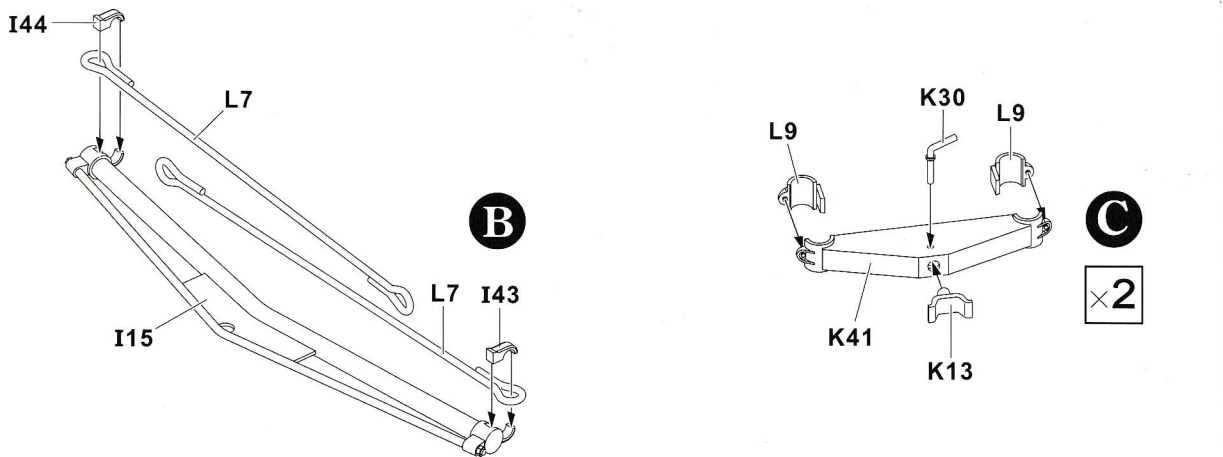
36



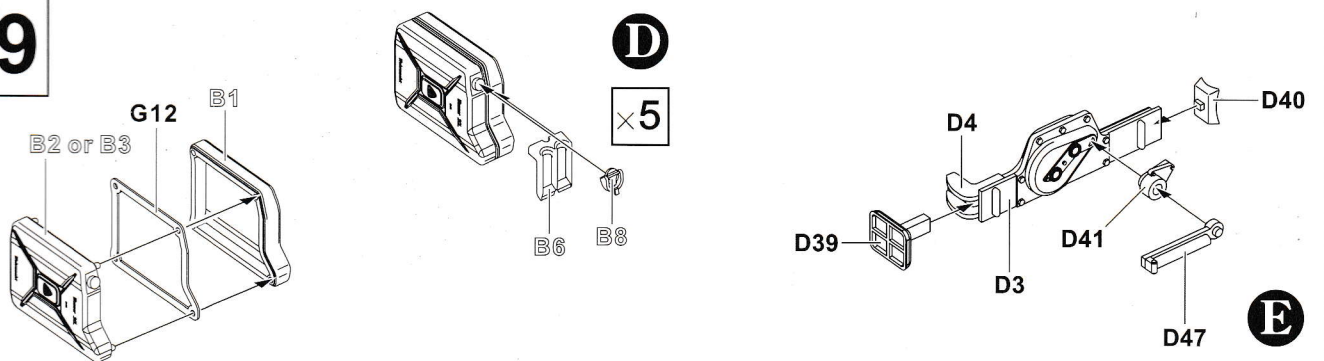
37



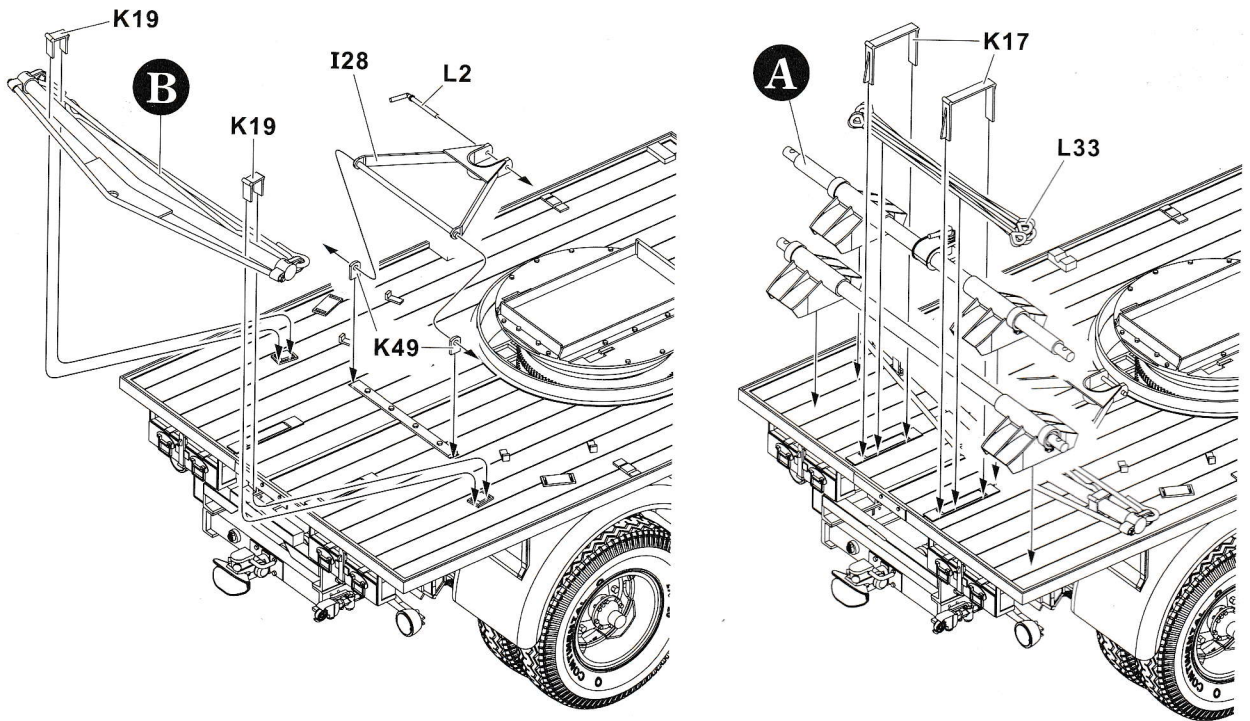
38



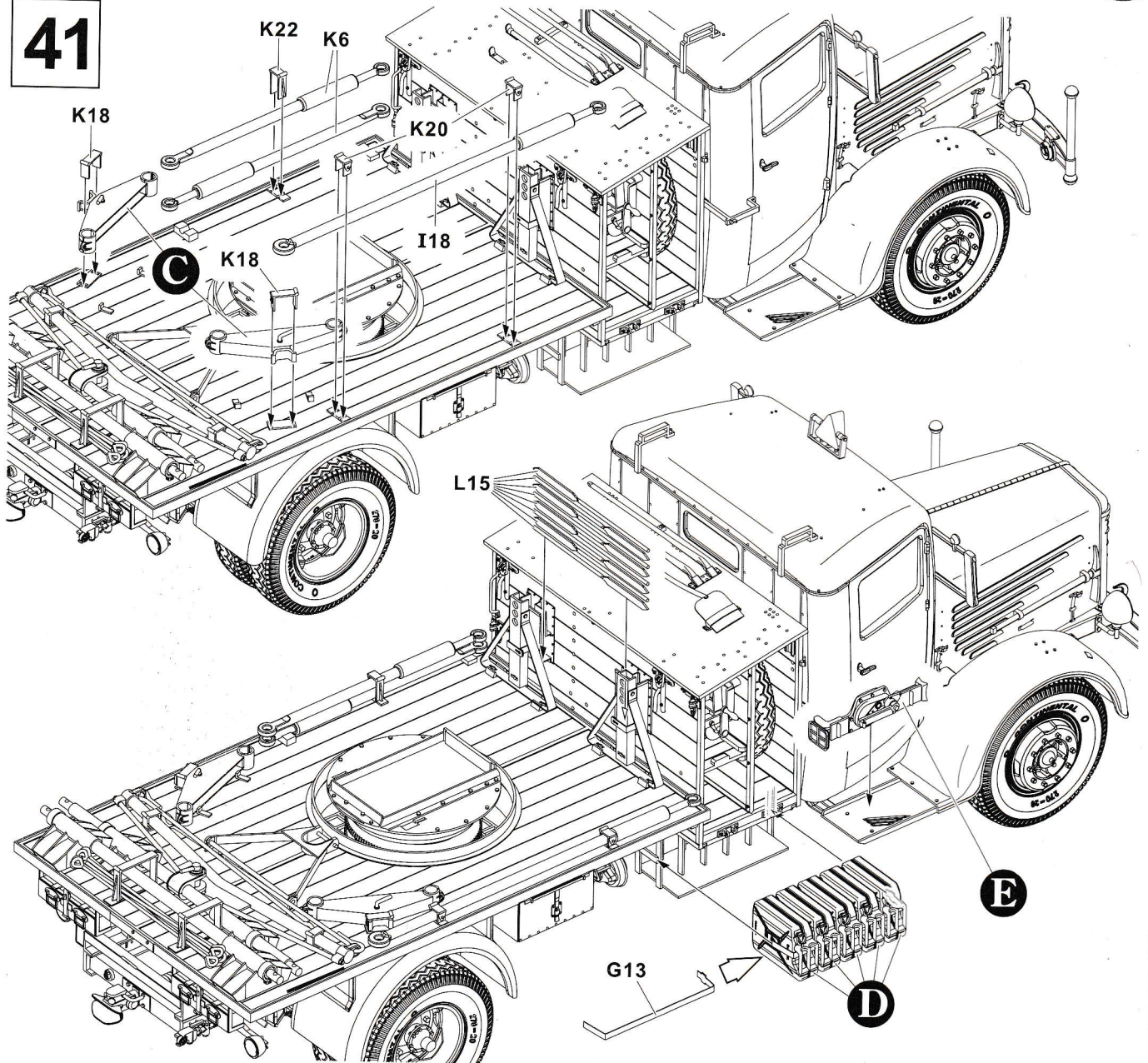
39



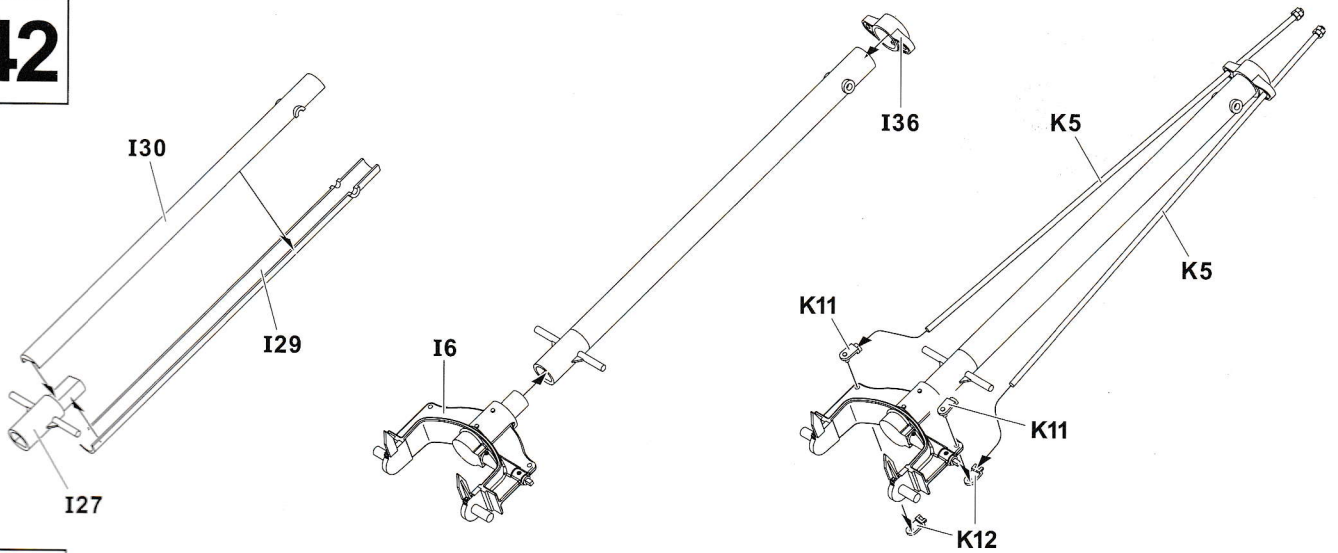
40



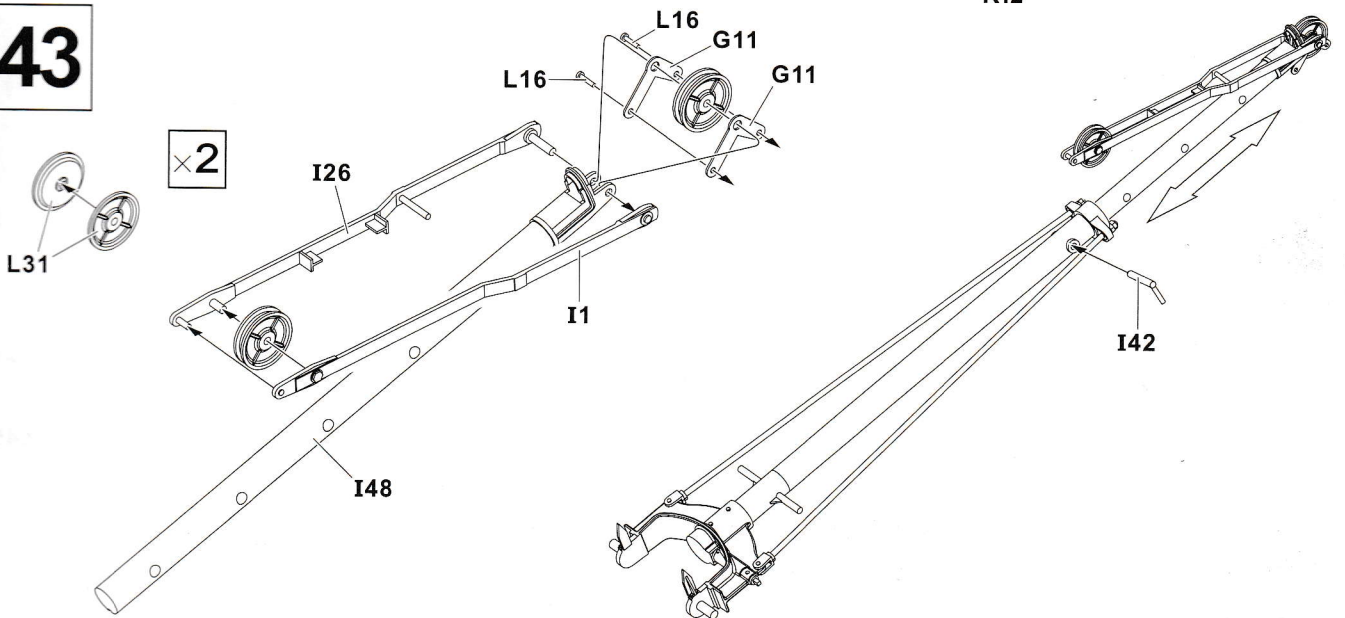
41



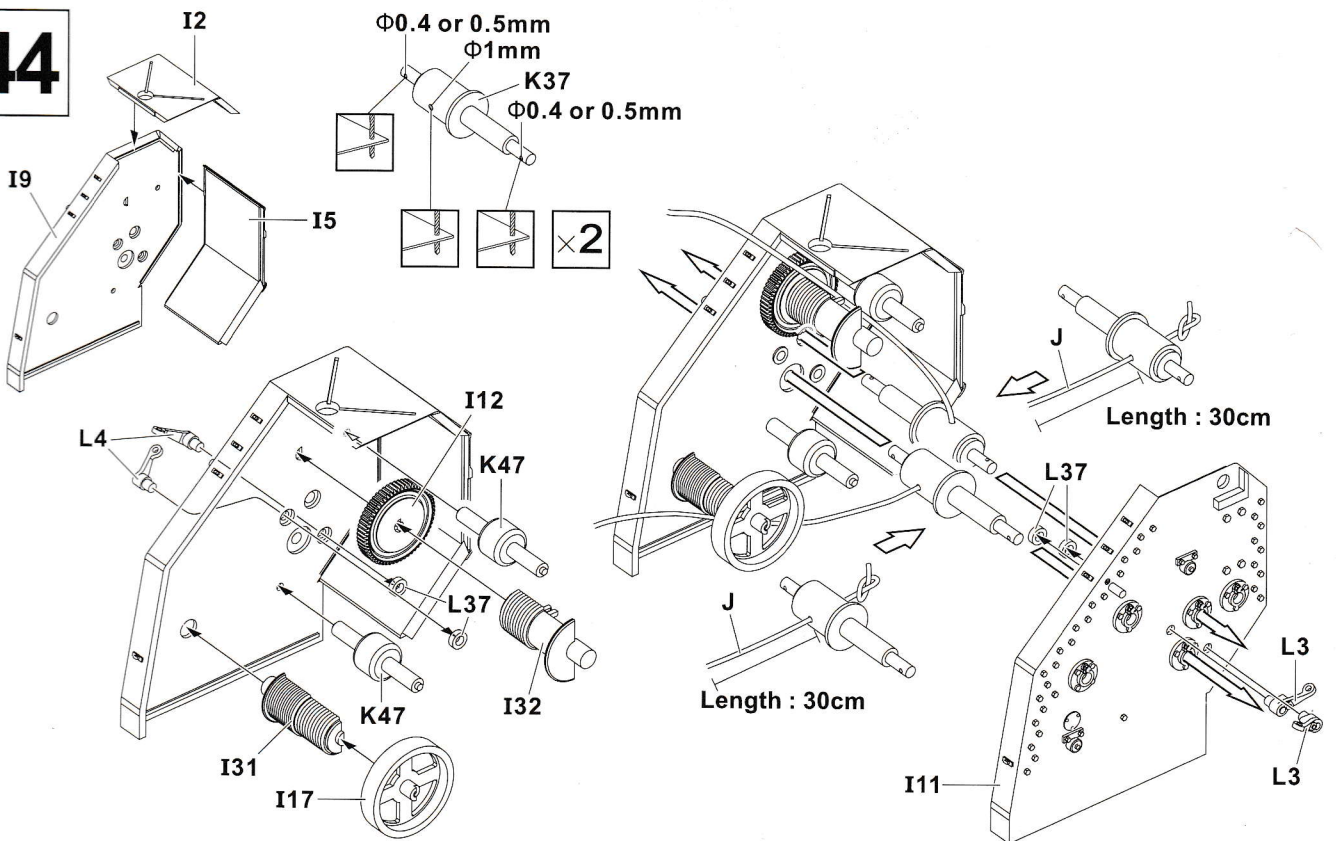
42



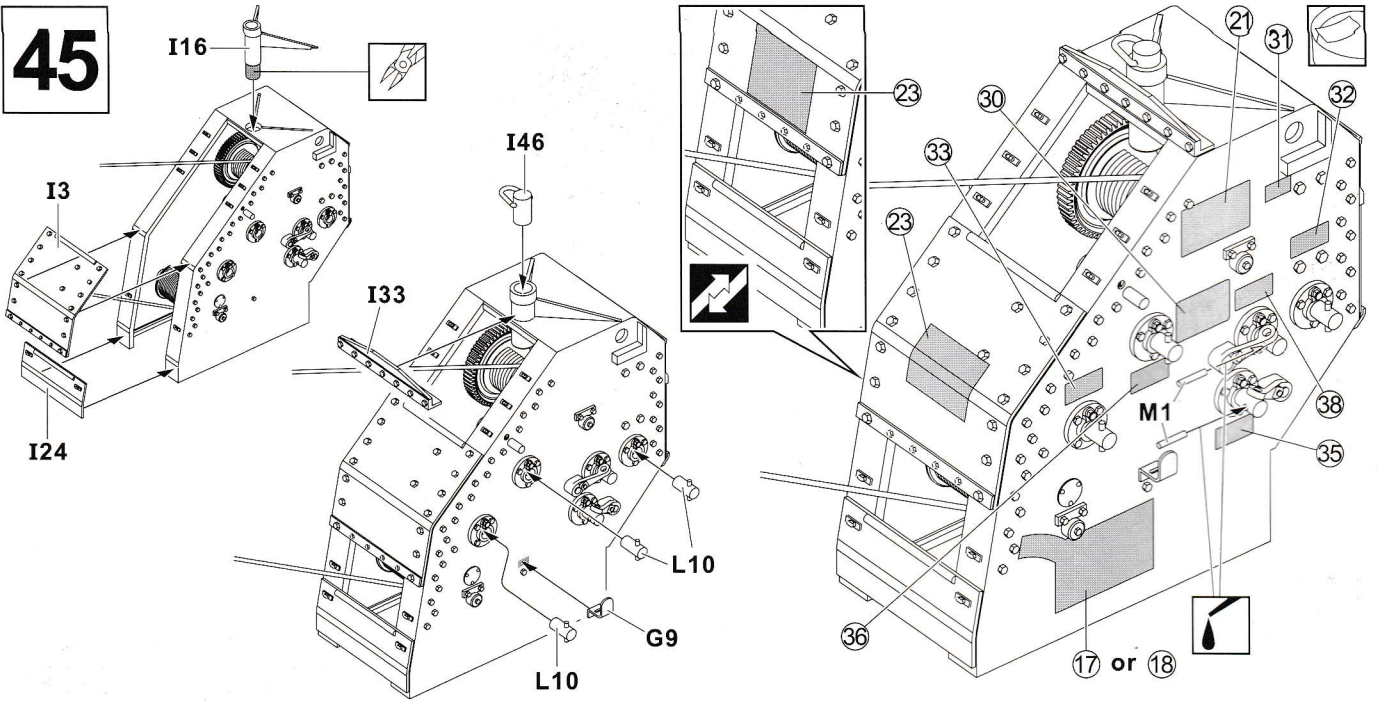
43



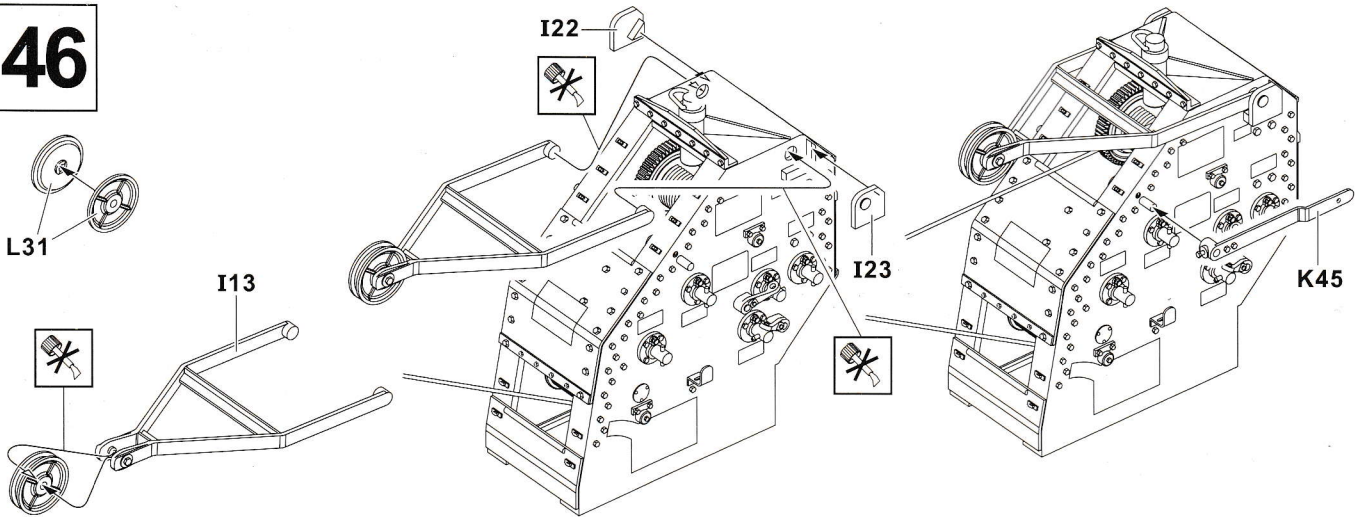
44



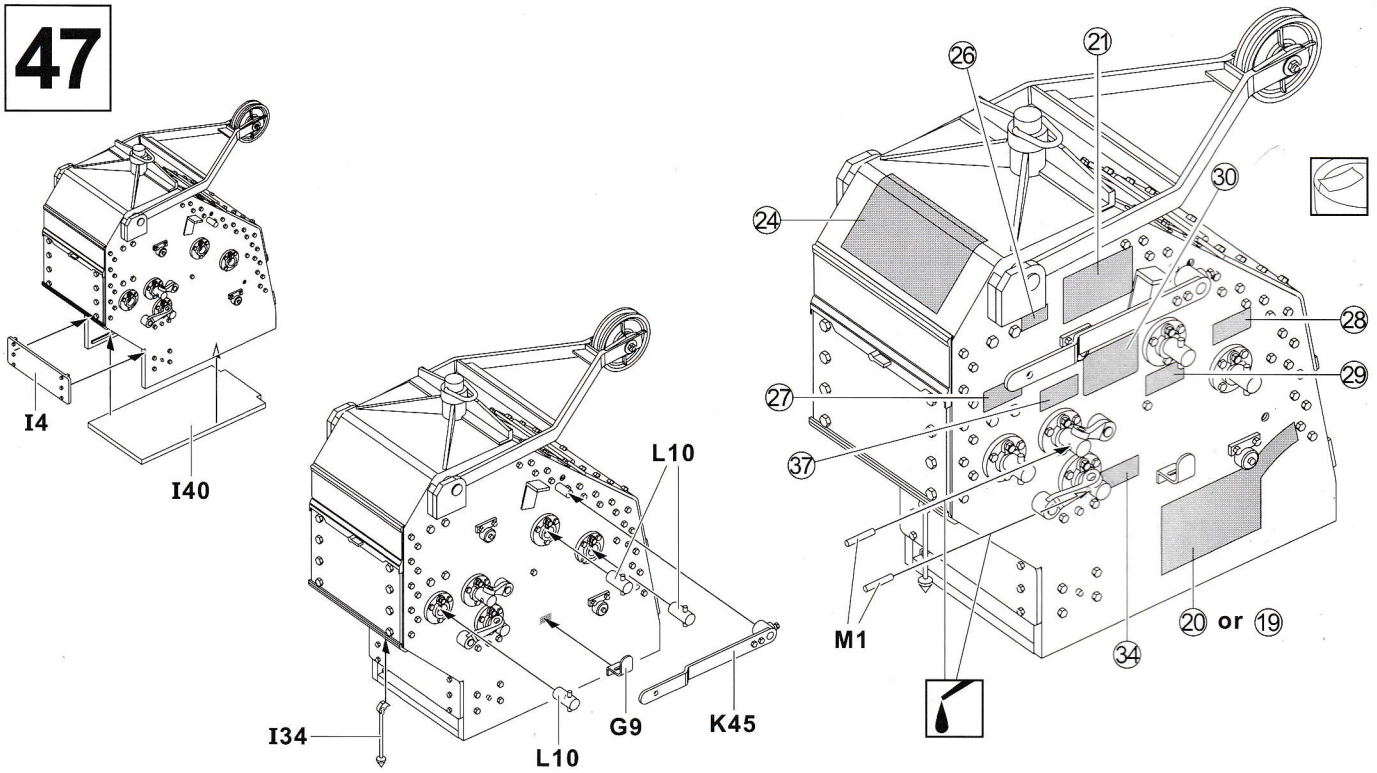
45



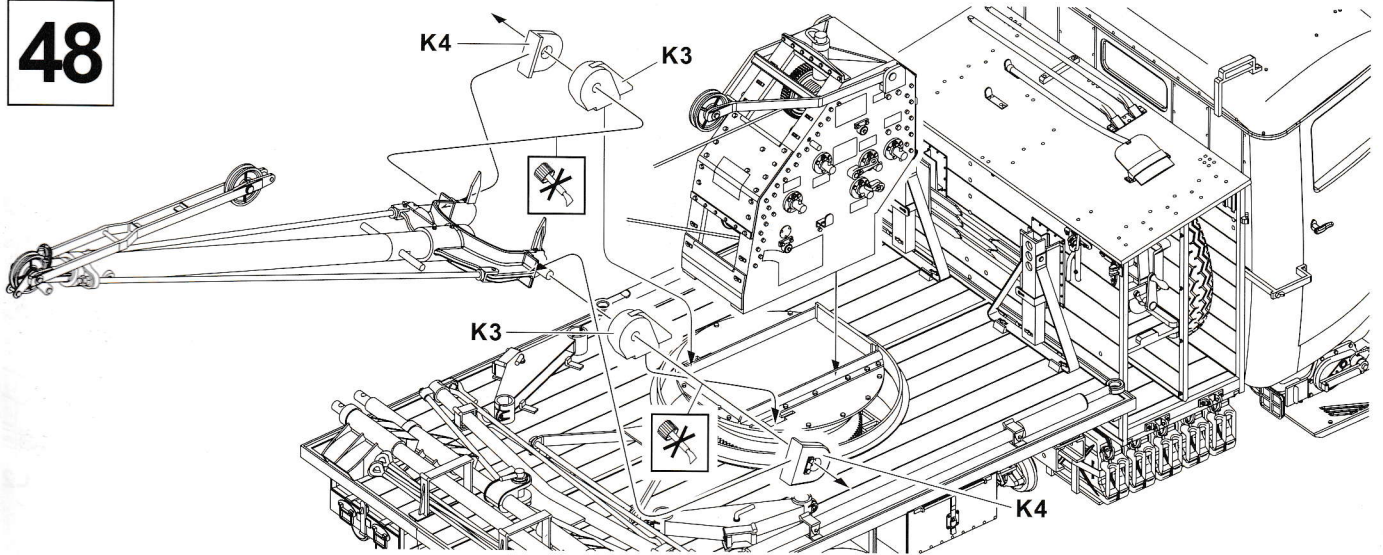
46



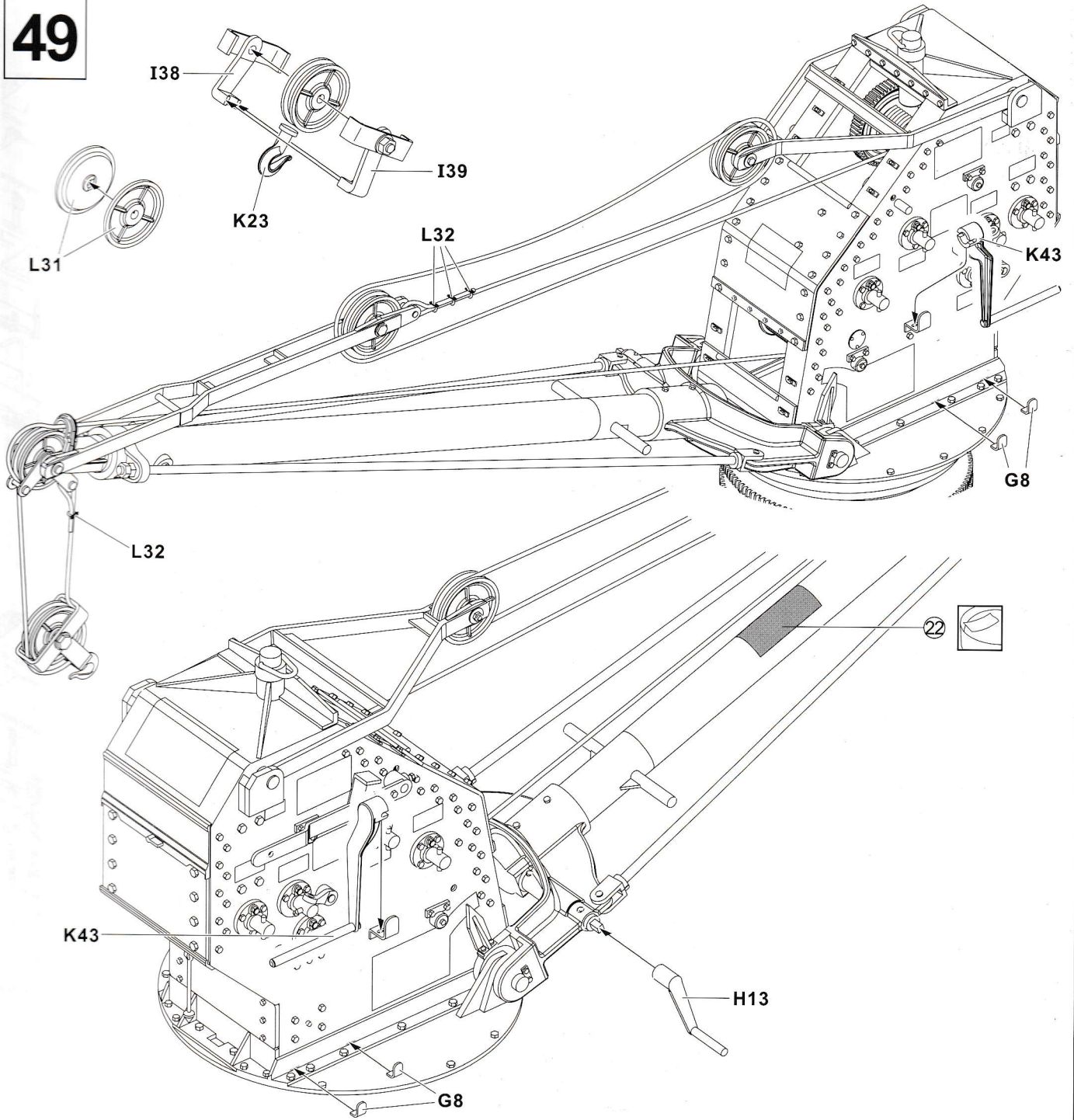
47



48

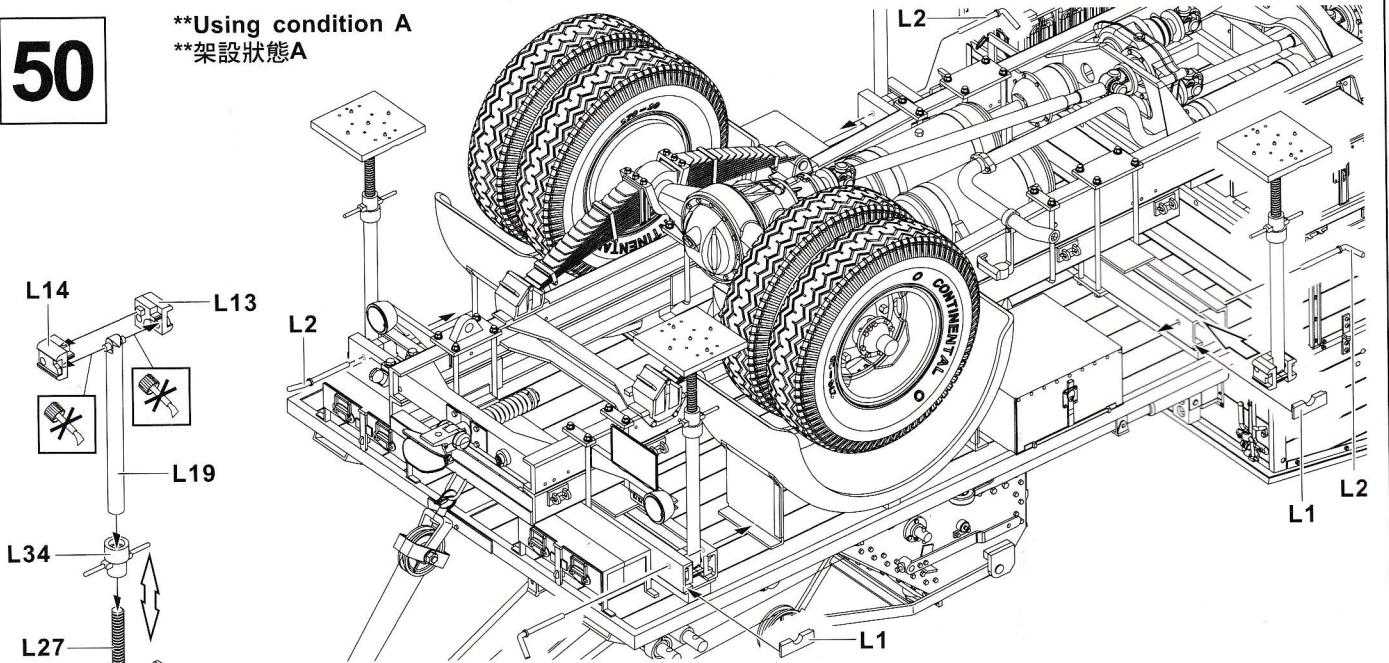


49

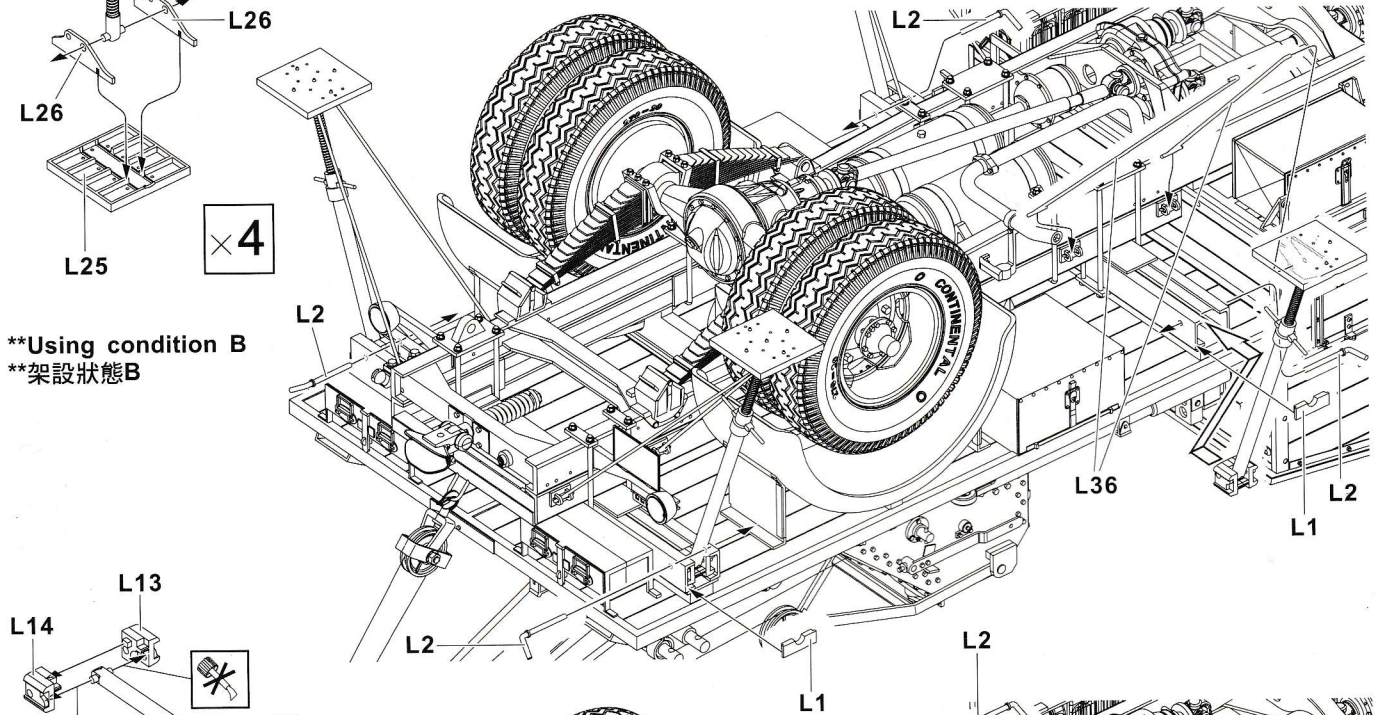


50

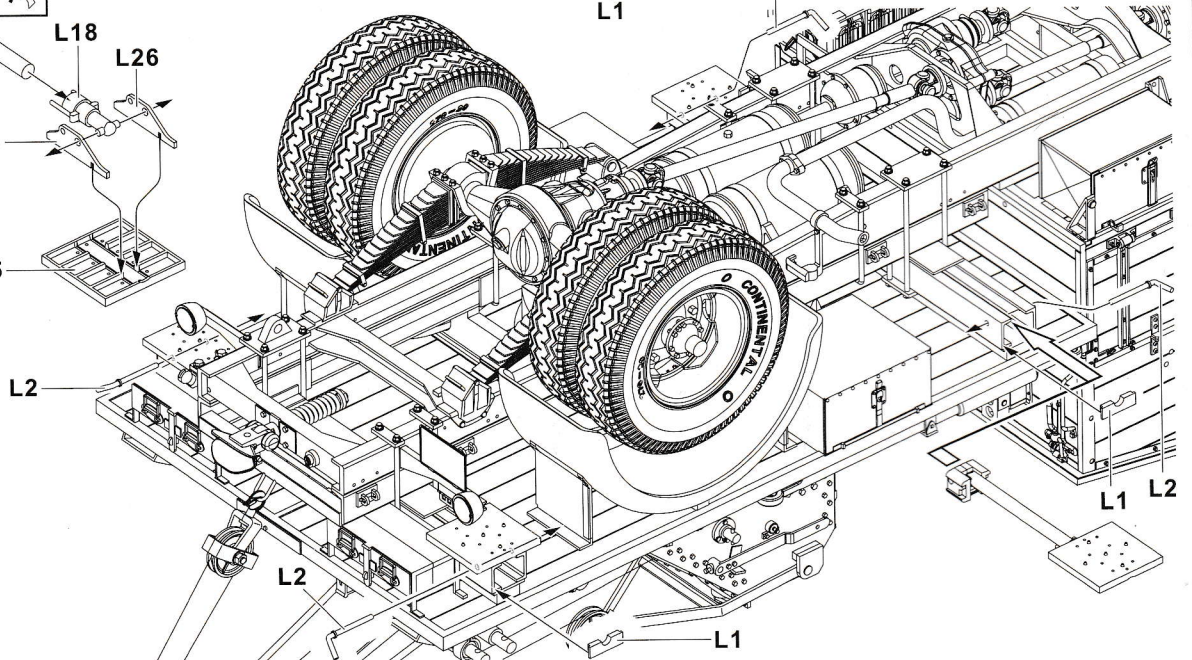
**Using condition A
**架設狀態A



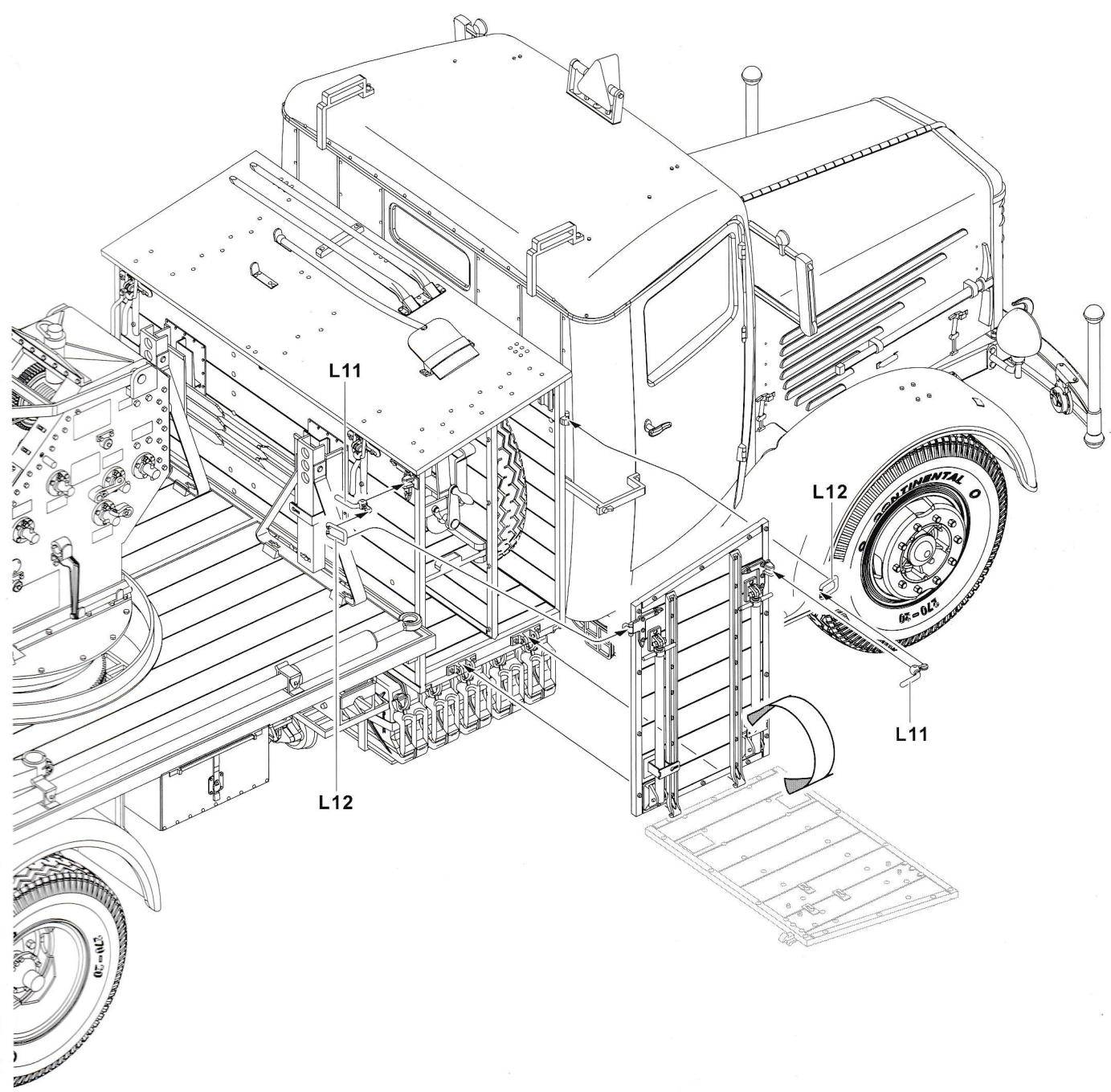
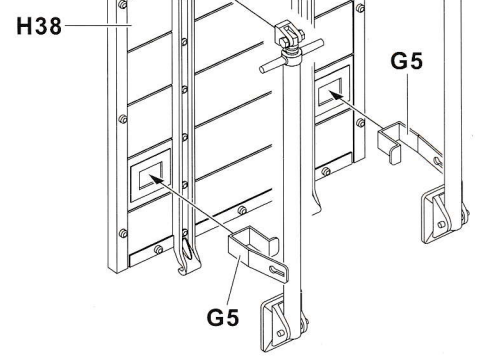
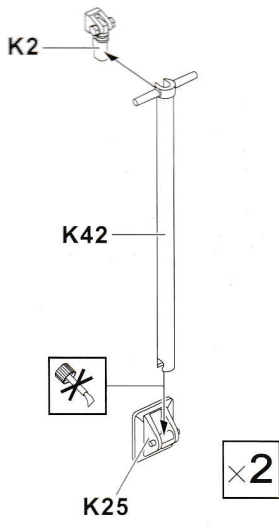
**Using condition B
**架設狀態B



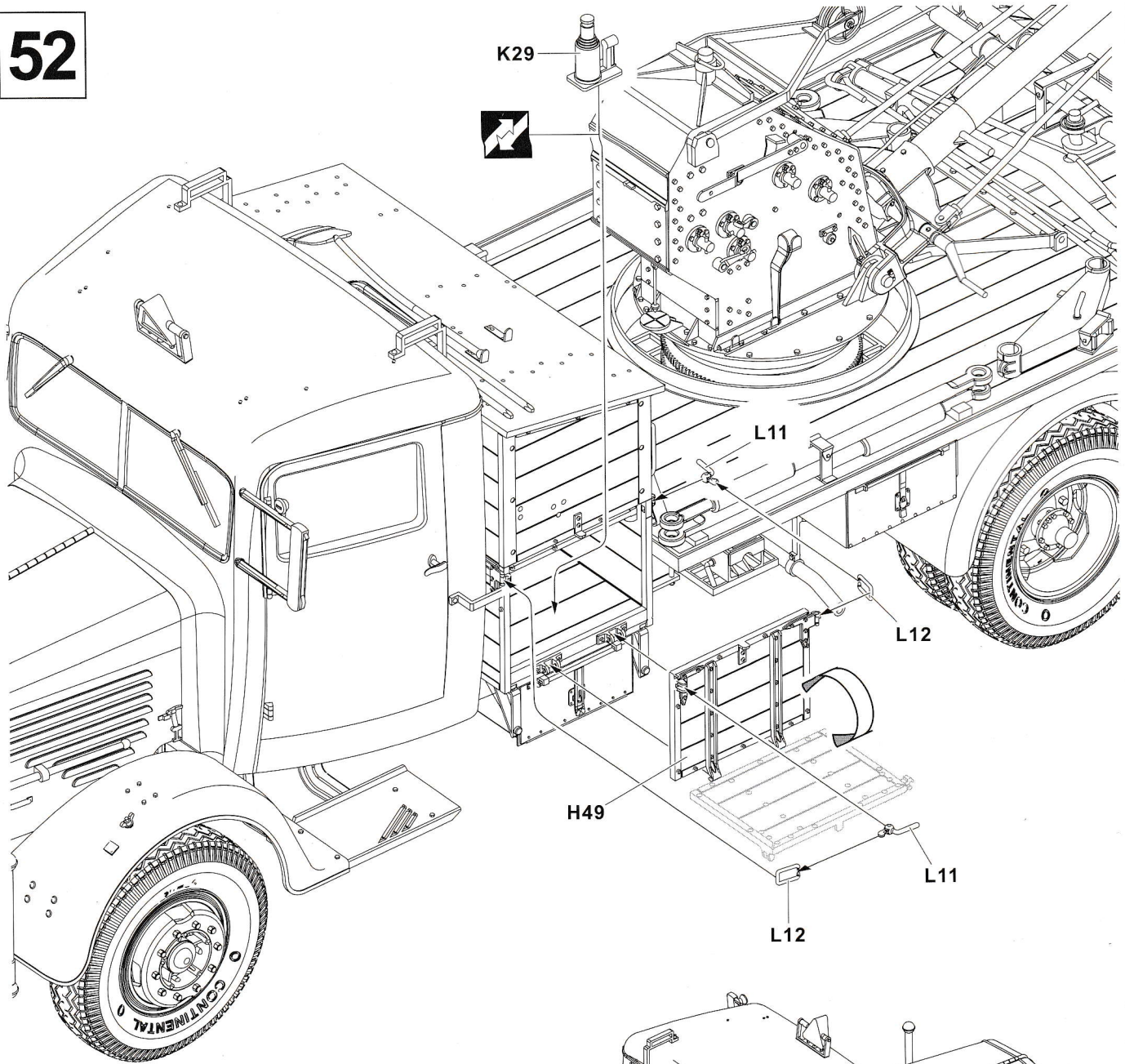
**Put back
**收納狀態



51



52



53

